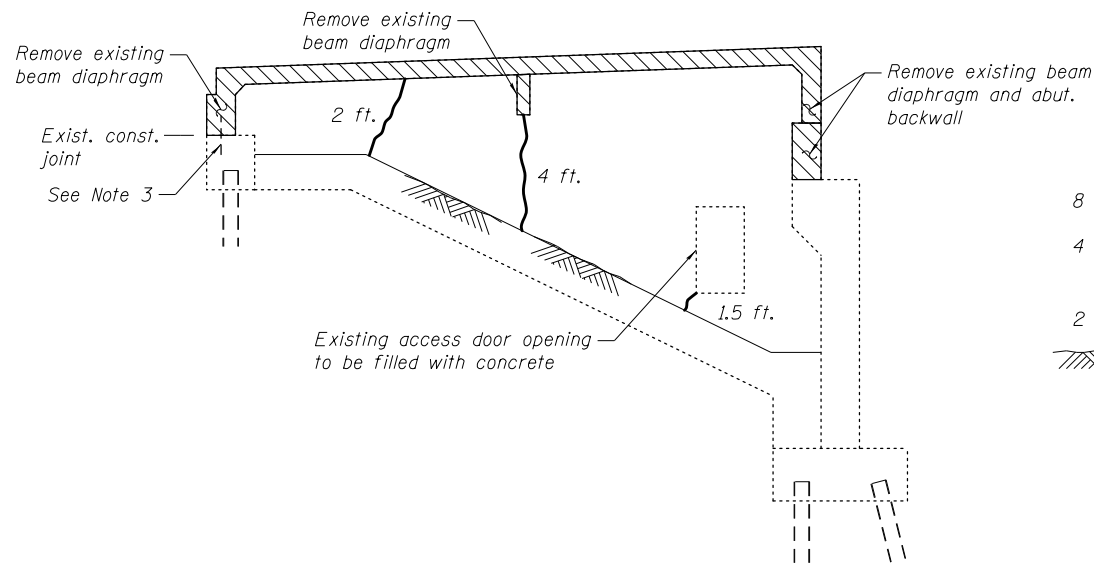


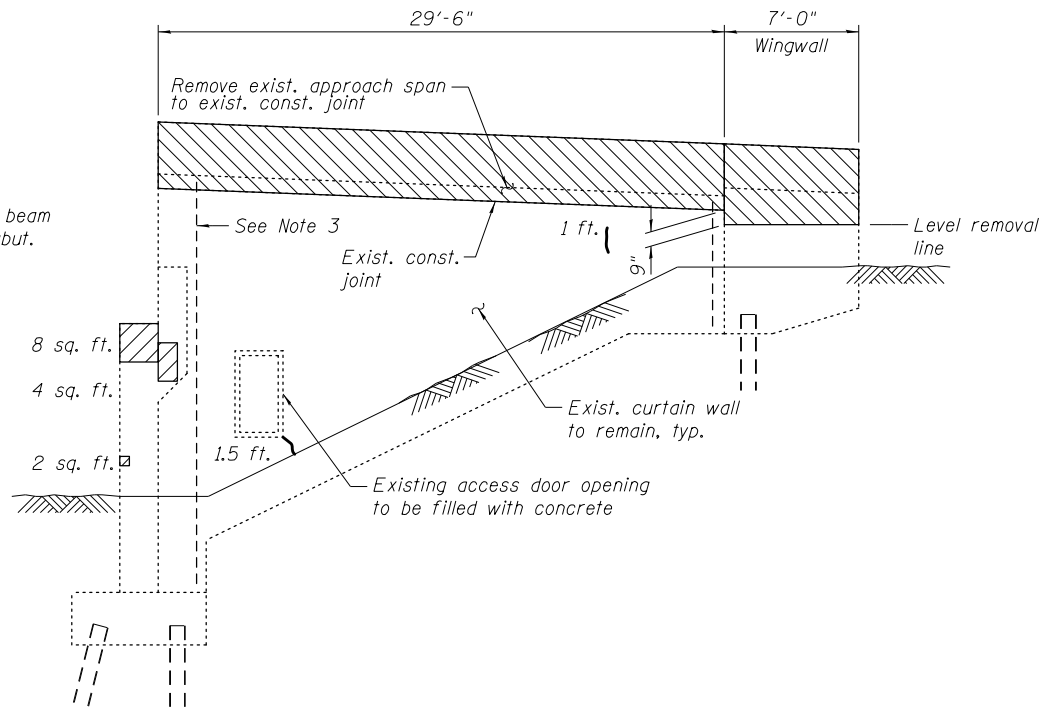
2/26/20 PM

S:\1072\_05\_CADD\Structure\1\SN\_0162437\CADD\_Sheet\162437-60J12-045-AB02Rem2.dgn 12/7/2012



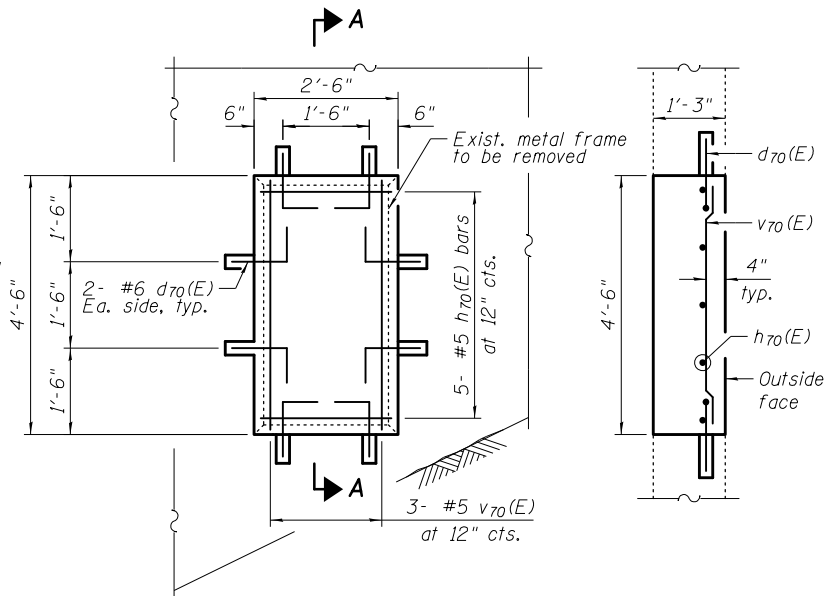
**NORTH WALL ELEVATION**

(Inside Face)  
(PPC I-beams not shown for clarity)



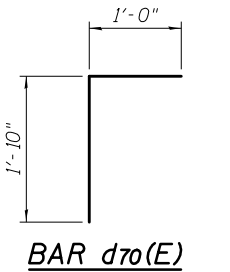
**NORTH WALL ELEVATION**

(Outside Face)  
(Abut. backwall and beam diaphragm removal not shown for clarity)

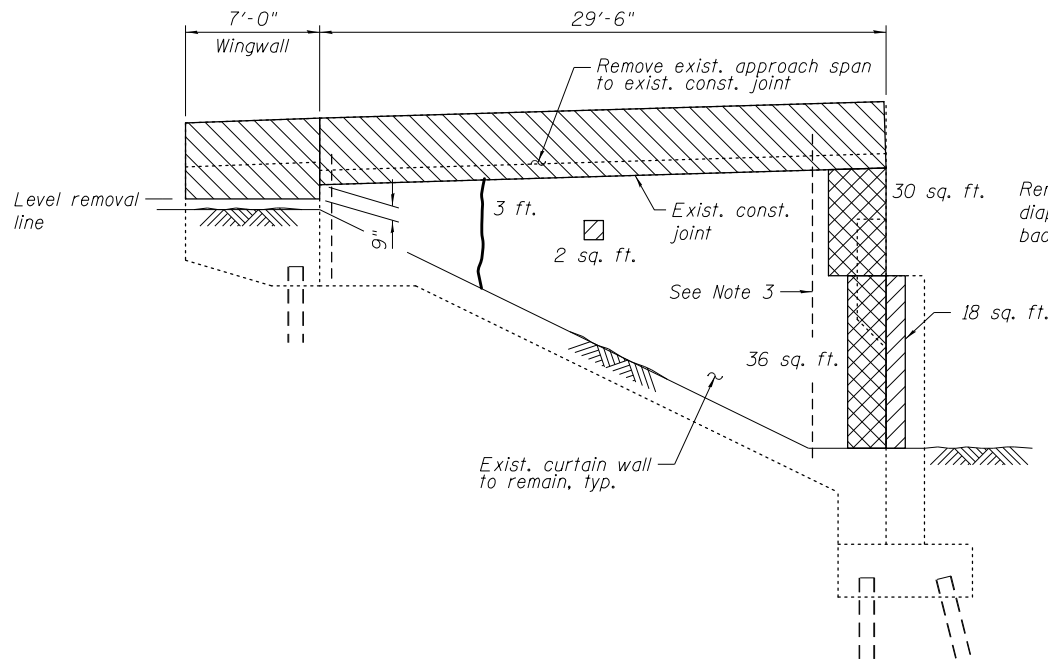


**ACCESS DOOR CLOSURE DETAIL**

**SECTION A-A**

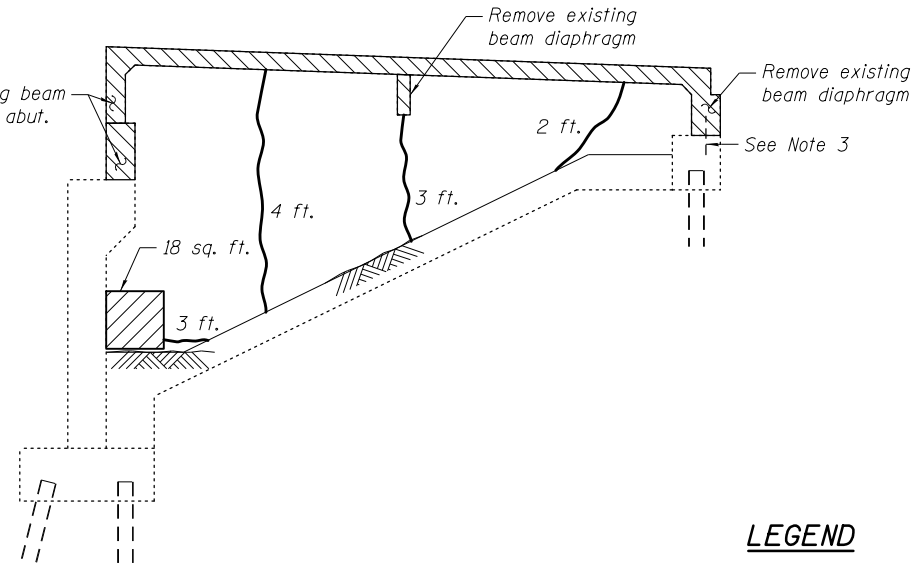


**BAR d70(E)**



**SOUTH WALL ELEVATION**

(Outside Face)  
(Abut. backwall and beam diaphragm removal not shown for clarity)



**SOUTH WALL ELEVATION**

(Inside Face)  
(PPC I-beams not shown for clarity)

**NOTES:**

- Actual quantities of repairs shall be approved by the Engineer.
- Any existing reinforcement to remain that is damaged during removal operations shall be repaired or replaced with an approved bar splicer or anchorage system at no additional cost.
- Reinforcement in existing abutment curtain walls and approach bent extending into removal area shall be cleaned, straightened, and incorporated into the new construction. Cost included with Concrete Removal.
- See Sheet S-44 for Concrete Removal quantity.
- Cost of removal of existing metal door frame shall be included in the cost of Concrete Structures.
- Epoxy grout d70(E) bars in 9" min. drilled holes according to Section 584 of the Standard Specifications.

**BILL OF MATERIAL**

Bar	No.	Size	Length	Shape	
d70(E)	8	#6	2'-10"	Γ	
h70(E)	5	#5	2'-2"	—	
v70(E)	3	#5	4'-2"	—	
Concrete Structures				Cu. Yd.	0.6
Reinforcement Bars, Epoxy Coated				Pound	70
Structural Repair of Concrete (Depth equal to or less than 5 inches)				Sq. Ft.	52
Structural Repair of Concrete (Depth greater than 5 inches)				Sq. Ft.	76
Epoxy Crack Injection				Foot	25

**LEGEND**

- Concrete Removal
- Structural Repair of Concrete (Depth equal to or less than 5 inches)
- Structural Repair of Concrete (Depth greater than 5 inches)
- Epoxy Crack Injection

BOWMAN, BARRETT & ASSOCIATES INC.  
CONSULTING ENGINEERS  
Chicago, Illinois  
312.228.0100  
www.bbainc.com

USER NAME =	DESIGNED - TL	REVISED -
	CHECKED - BAK	REVISED -
PLOT SCALE =	DRAWN - MTR	REVISED -
PLOT DATE = 11/08/2012	CHECKED - TL	REVISED -

STATE OF ILLINOIS  
DEPARTMENT OF TRANSPORTATION

ABUTMENT 2 REMOVAL AND REPAIR DETAILS II  
STRUCTURE NO. 016-2437

SHEET NO. S-45 OF S-83 SHEETS

F.A.I. RTE. 94	SECTION 2012-060-BR	COUNTY COOK	TOTAL SHEETS 285	SHEET NO. 208
CONTRACT NO. 60V61				
ILLINOIS FED. AID PROJECT				