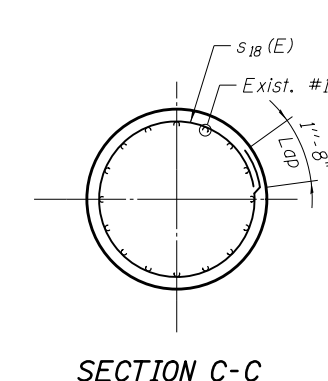
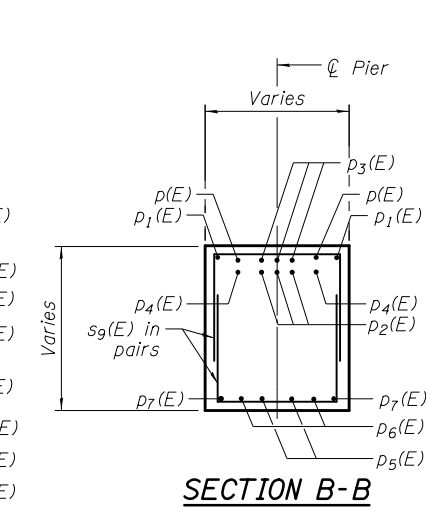
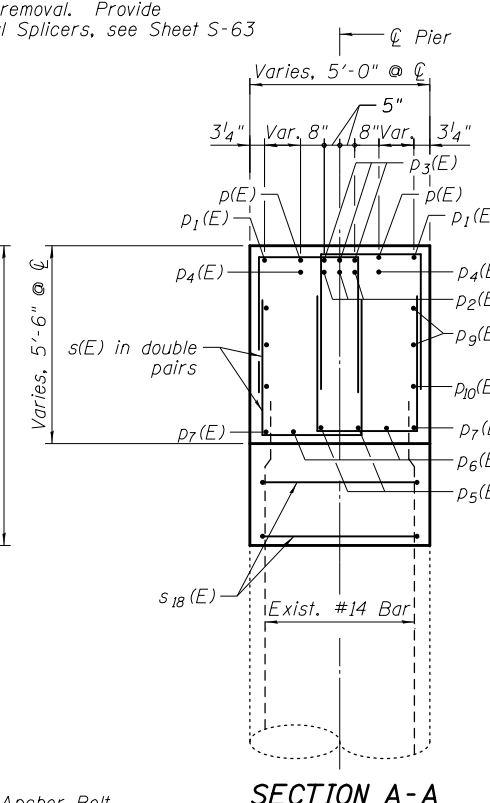
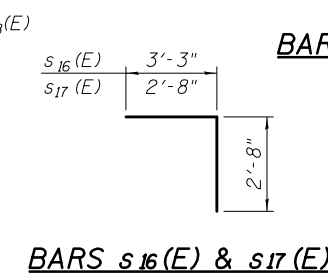
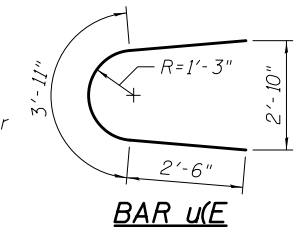
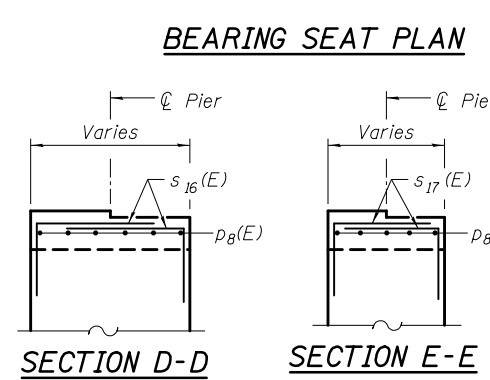
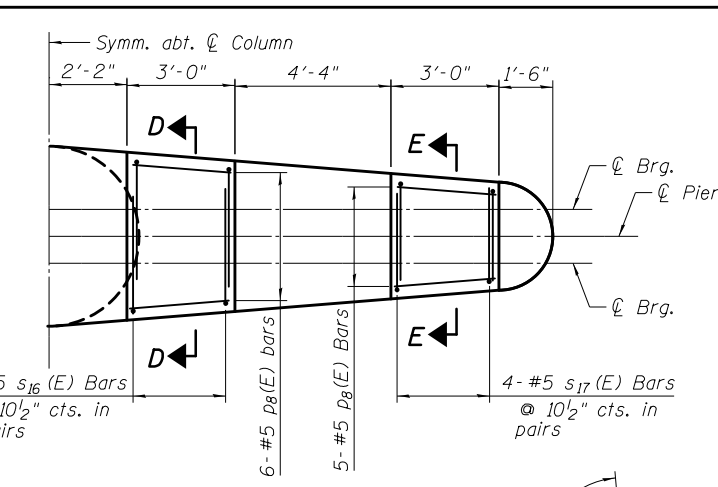


BEARING SEAT ELEVATIONS

Beam No.	S. Elevation	N. Elevation
G1	610.74	610.59
G2	611.23	611.05
G3	611.68	611.46
G4	612.07	611.89

ELEVATION
(Looking North)

Note:
1. See S-38 & S-39 for Anchor Bolt Layout and dimensions.



BARS s(E) thru s8(E)

Bar	'a'
s(E)	2'-10 1/2"
s ₁ (E)	2'-10"
s ₂ (E)	2'-9 1/2"
s ₃ (E)	2'-8 3/4"
s ₄ (E)	2'-8"
s ₅ (E)	2'-7 1/2"
s ₆ (E)	2'-6 3/4"
s ₇ (E)	2'-6"
s ₈ (E)	2'-5 1/2"

BARS s9(E) thru s15(E)

Bar	'b'
s ₉ (E)	3'-8"
s ₁₀ (E)	3'-6"
s ₁₁ (E)	3'-4 1/2"
s ₁₂ (E)	3'-2"
s ₁₃ (E)	3'-0 1/2"
s ₁₄ (E)	2'-10 1/2"
s ₁₅ (E)	2'-8 1/2"

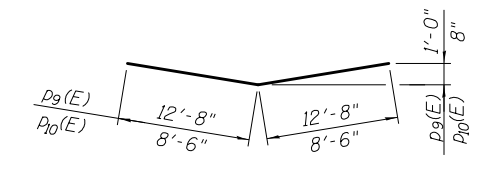
BILL OF MATERIAL

Bar	No.	Size	Length	Shape
p(E)	2	#11	29'-4"	U
p ₁ (E)	2	#11	24'-0"	U
p ₂ (E)	3	#10	30'-8"	U
p ₃ (E)	3	#11	31'-0"	U
p ₄ (E)	2	#10	29'-0"	U
p ₅ (E)	2	#8	27'-0"	U
p ₆ (E)	2	#8	25'-6"	U
p ₇ (E)	4	#8	14'-6"	U
p ₈ (E)	22	#5	2'-8"	U
p ₉ (E)	4	#5	25'-4"	U
p ₁₀ (E)	2	#5	17'-0"	U
s(E)	8	#5	10'-4 1/2"	U
s ₁ (E)	8	#5	10'-4"	U
s ₂ (E)	8	#5	10'-3 1/2"	U
s ₃ (E)	8	#5	10'-3"	U
s ₄ (E)	8	#5	10'-2"	U
s ₅ (E)	8	#5	10'-1 1/2"	U
s ₆ (E)	8	#5	10'-1"	U
s ₇ (E)	8	#5	10'-0"	U
s ₈ (E)	8	#5	9'-11 1/2"	U
s ₉ (E)	4	#5	10'-2"	U
s ₁₀ (E)	4	#5	10'-0"	U
s ₁₁ (E)	4	#5	9'-10 1/2"	U
s ₁₂ (E)	4	#5	9'-8"	U
s ₁₃ (E)	4	#5	9'-6 1/2"	U
s ₁₄ (E)	4	#5	9'-4 1/2"	U
s ₁₅ (E)	4	#5	9'-2 1/2"	U
s ₁₆ (E)	8	#5	5'-11"	U
s ₁₇ (E)	8	#5	5'-4"	U
s ₁₈ (E)	4	#4	16'-4"	U
u(E)	8	#5	8'-11"	U
v(E)	10	#5	3'-2"	U
Concrete Structures	Cu. Yd.		23.0	
Reinforcement Bars, Epoxy Coated	Pound		3,640	
Concrete Sealer	Sq. Ft.		560	

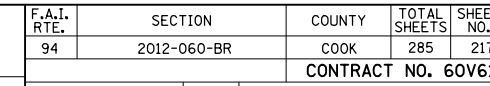
BARS p7(E) BARS p(E), p2(E), p3(E) & p4(E)

Bar	'A'	'B'	'C'
p(E)	25'-4"	2'-0"	1 1/2"
p ₂ (E)	27'-0"	1'-10"	1 1/2"
p ₃ (E)	27'-0"	2'-0"	1 1/2"
p ₄ (E)	25'-4"	1'-10"	1 1/2"

BARS p1(E), p5(E) & p6(E)



BARS p9(E) & p10(E)



2/26/24 PM 12/7/2012 S:\1072_05_CADD\Structure\1 SN 0162437\CADD Sheets\0162437-60J12-054-FR06.dgn

BOWMAN, BARRETT & ASSOCIATES INC.
CONSULTING ENGINEERS
Chicago, Illinois
312.228.0100
www.bbainc.com

USER NAME =	DESIGNED - SF	REVISIONS -
PLOT SCALE =	CHECKED - BAK	REVISIONS -
PLOT DATE = 11/08/2012	DRAWN - MTR	REVISIONS -
	CHECKED - SF	REVISIONS -

STATE OF ILLINOIS
DEPARTMENT OF TRANSPORTATION

PIER 6 CAP RECONSTRUCTION DETAILS
STRUCTURE NO. 016-2437
SHEET NO. S-54 OF S-83 SHEETS

F.A.I. RTE.	SECTION	COUNTY	TOTAL SHEETS	SHEET NO.
94	2012-060-BR	COOK	285	217

CONTRACT NO. 60V61
ILLINOIS FED. AID PROJECT