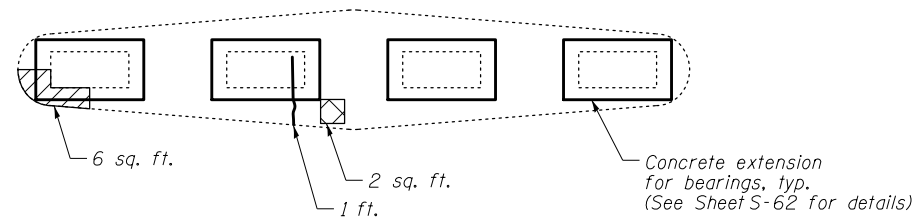


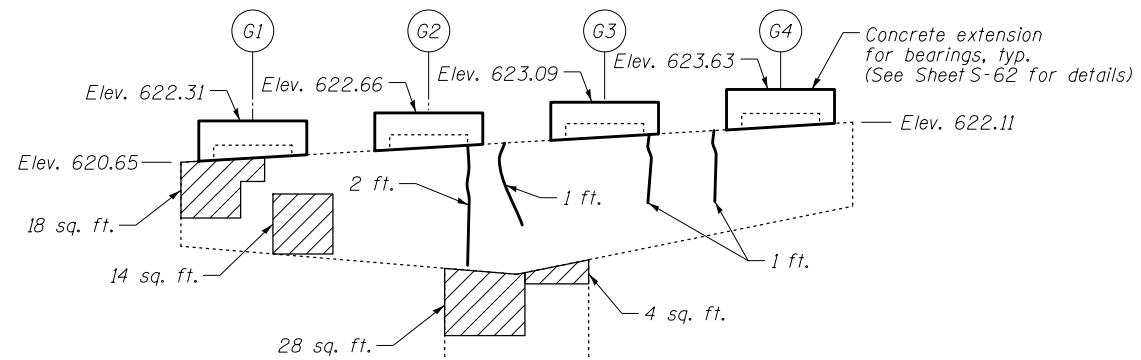
2/26/25 PM

12/7/2012

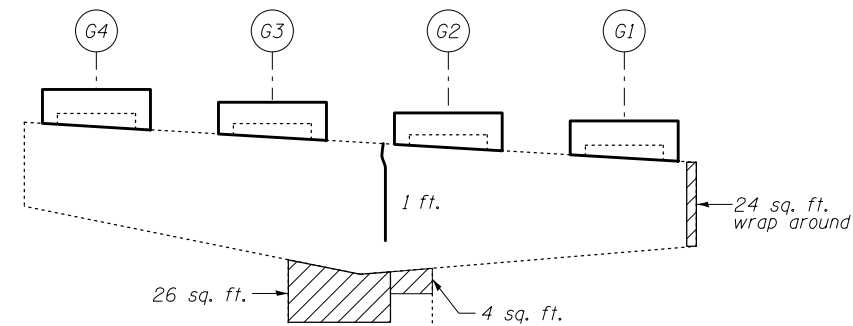
S:\1072_05_CADD\Structure\1\SN_0162437\CADD_Sheets\0162437-60J12-057-FR08.dgn



TOP VIEW



EAST FACE ELEVATION
(Looking West)



WEST FACE ELEVATION
(Looking East)

NOTES:

1. Actual quantities of repairs shall be approved by the Engineer.

LEGEND

- Structural Repair of Concrete (Depth equal to or less than 5 inches)
- Structural Repair of Concrete (Depth greater than 5 inches)
- Epoxy Crack Injection

BILL OF MATERIAL

ITEM	UNIT	QUANTITY
Structural Repair of Concrete (Depth equal to or less than 5 inches)	Sq. Ft.	124
Structural Repair of Concrete (Depth greater than 5 inches)	Sq. Ft.	2
Epoxy Crack Injection	Foot	7
Jack and Remove Existing Bearings	Each	4

BOWMAN, BARRETT & ASSOCIATES INC.
CONSULTING ENGINEERS
Chicago, Illinois
312.228.0100
www.bbainc.com



USER NAME =
DESIGNED - TL
CHECKED - BAK
PLOT SCALE =
DRAWN - MTR
PLOT DATE = 11/08/2012
CHECKED - TL

REVISED -
REVISED -
REVISED -
REVISED -

STATE OF ILLINOIS
DEPARTMENT OF TRANSPORTATION

PIER 9 REPAIR DETAILS
STRUCTURE NO. 016-2437

SHEET NO. S-57 OF S-83 SHEETS

F.A.I. RTE.	SECTION	COUNTY	TOTAL SHEETS	SHEET NO.
94	2012-060-BR	COOK	285	220
CONTRACT NO. 60V61				
ILLINOIS FED. AID PROJECT				