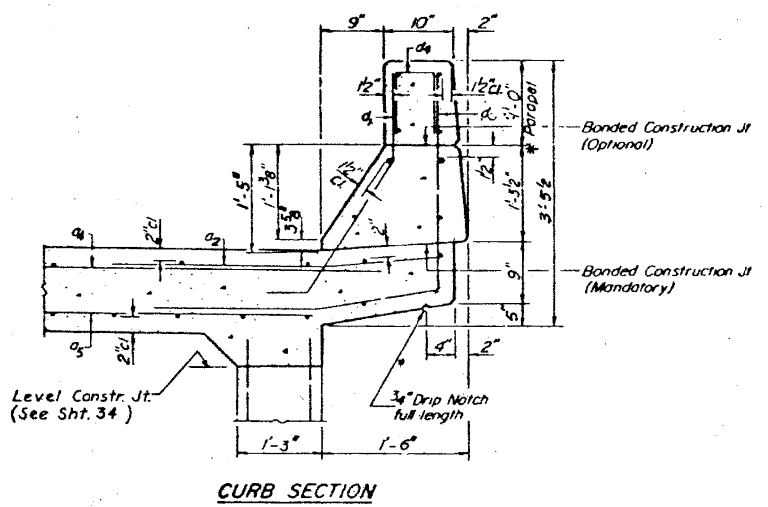
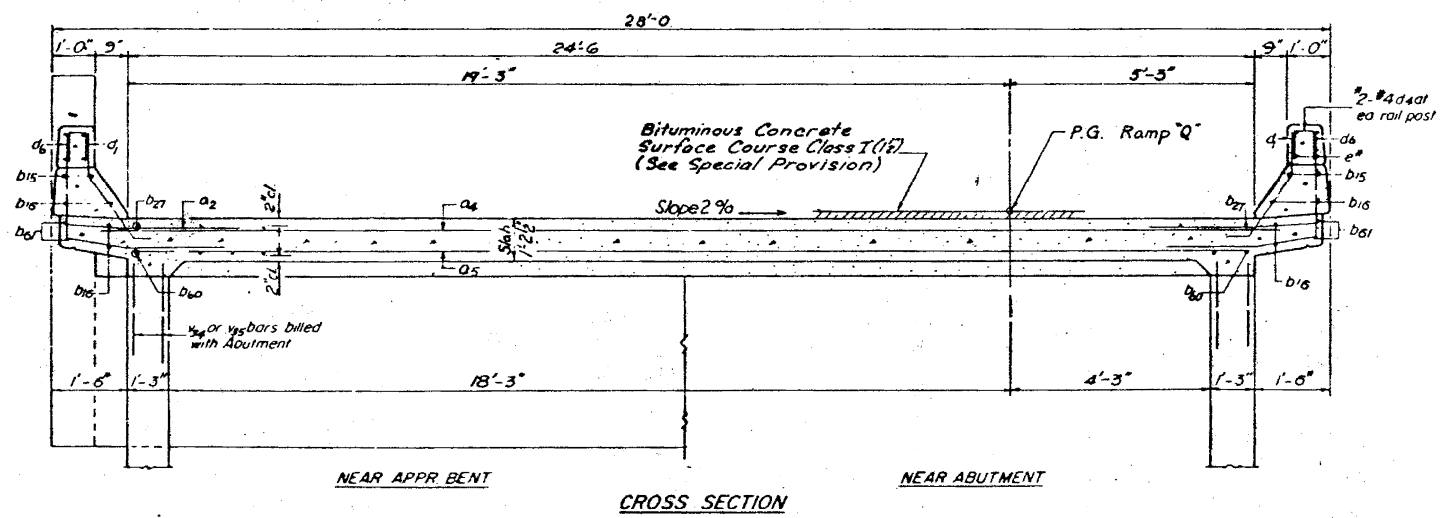
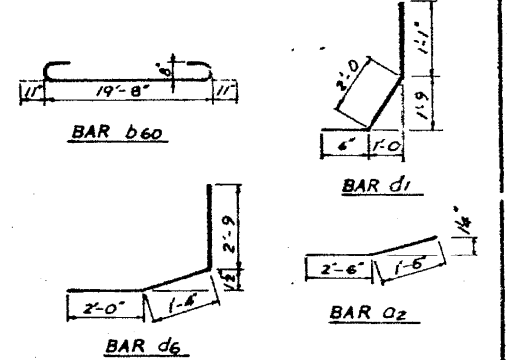
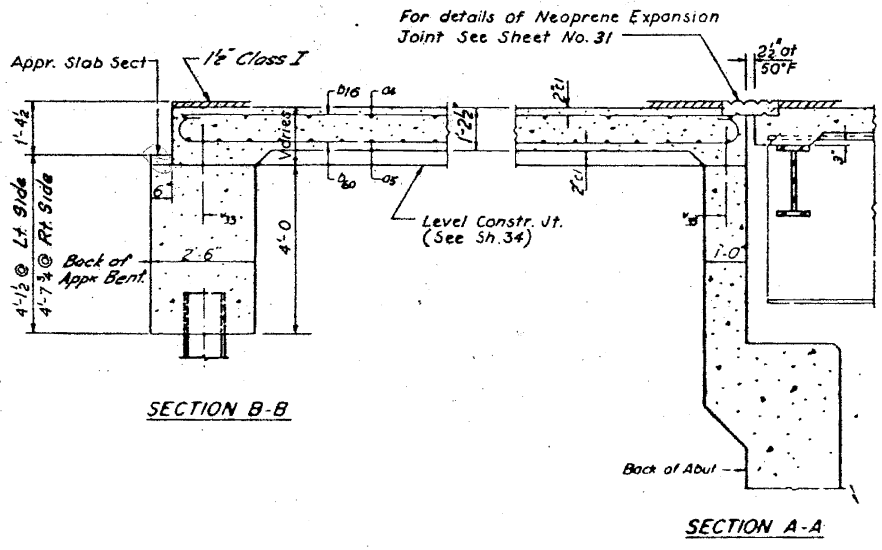
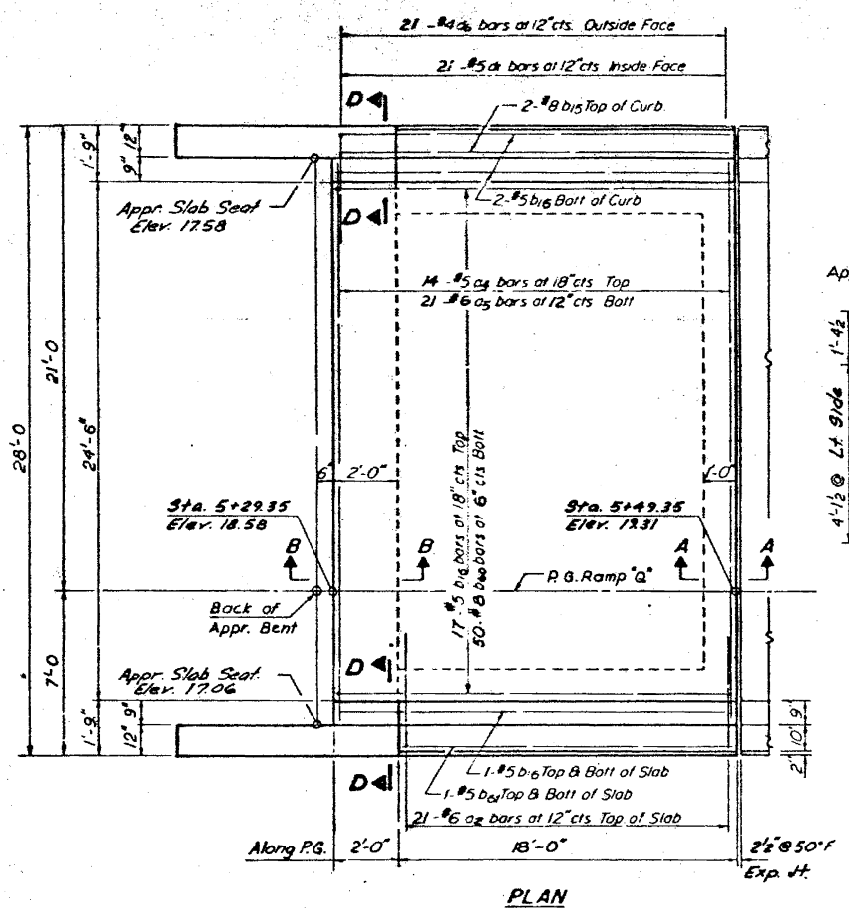


BILL OF MATERIAL				
BAR	NO	SIZE	LENGTH	SHAPE
a2	42	#5	4'-0"	—
a4	14	#5	26'-0"	—
a5	21	#6	24'-3"	—
b15	4	#8	19'-8"	—
b16	25	#5	19'-8"	—
b60	50	#8	21'-6"	—
b61	4	#5	17'-8"	—
d1	42	#5	3'-7"	—
d6	42	#5	6'-1"	—



**NOTES**

- For Parapet Plan and Details See Sht. No. 24
- Parapet Reinforcement and Class X Concrete are billed on Sht. No. 24
- For Continuation of Slab See Sht. No. 18
- For Section D-D See Sht. No. 34
- For Deck Surfacing Details See Sht. No. 25.

ESTIMATED QUANTITIES ABUT. NO. 1		
ITEM	UNIT	TOTAL
REINFORCEMENT BARS	LB.	5410
CLASS X CONCRETE	C.Y.	30.1
PROTECTIVE COAT	S.Y.	15
BITUMINOUS CONCRETE SURFACE COURSE CLASS I	TON	4.9
COAL TAR INTERLAYER PROTECTIVE COAT	S.Y.	55

REVISIONS		
DATE	BY	DESCRIPTION

**DEPARTMENT OF HIGHWAYS**  
COOK COUNTY, ILLINOIS

**SLAB PLAN AT ABUTMENT NO. 1**  
STONY ISLAND CONNECTOR TO FAI 94  
RAMP Q STRUCTURE

ENGINEER: BENDER, STONE & ASSOCIATES INC.  
CONSULTING ENGINEERS  
CHICAGO, ILLINOIS

PROJECT: CEU 246077

SCALE: 1/4" = 1'-0"

APPROVED: [Signature]

DATE: 11/08/2012

F.A. ROUTE NO. 122 COUNTY HWY. 174 A SHEET NO. 17 TOTAL SHEETS 109 DRAWING NO.

2/26/28 PM

12/7/2012

SA:1072.05-CADD-S-Structure-1.SN 0162437-CADD Sheets 0162437-60J12-964-FY01.dgn

BOWMAN, BARRETT & ASSOCIATES INC.  
CONSULTING ENGINEERS  
Chicago, Illinois  
312.228.0100  
www.bbainc.com

USER NAME =	DESIGNED -	REVISED -
PLOT SCALE =	CHECKED - BAK	REVISED -
PLOT DATE = 11/08/2012	DRAWN -	REVISED -
	CHECKED -	REVISED -

STATE OF ILLINOIS  
DEPARTMENT OF TRANSPORTATION

EXISTING PLANS (FOR INFORMATION ONLY)  
STRUCTURE NO. 016-2437

SHEET NO. S-64 OF S-83 SHEETS

F.A.I. RTE.	SECTION	COUNTY	TOTAL SHEETS	SHEET NO.
94	2012-060-BR	COOK	285	227
CONTRACT NO. 60V61				
ILLINOIS FED. AID PROJECT				