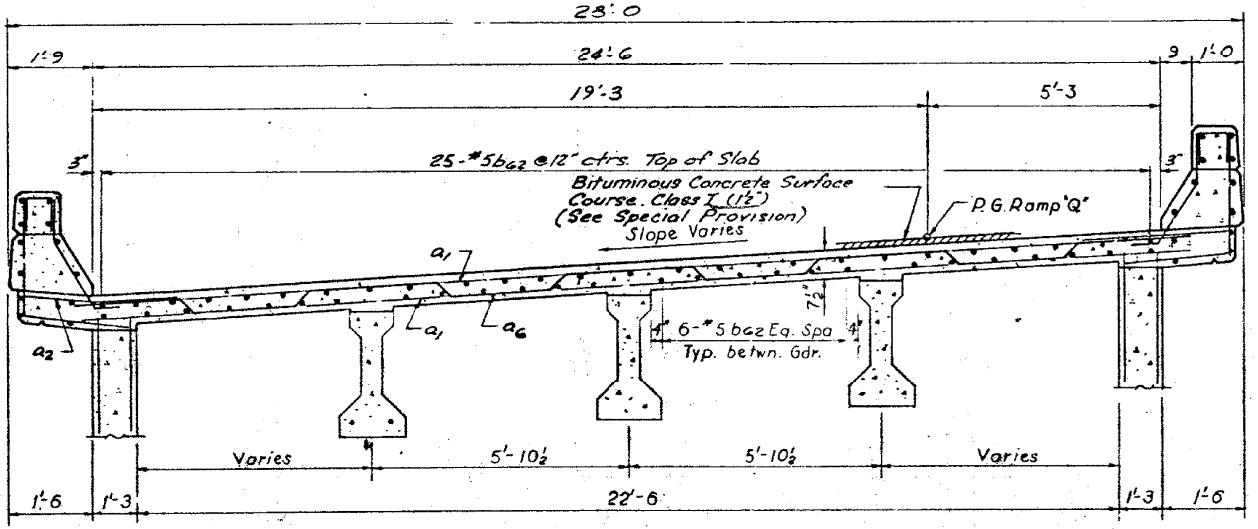
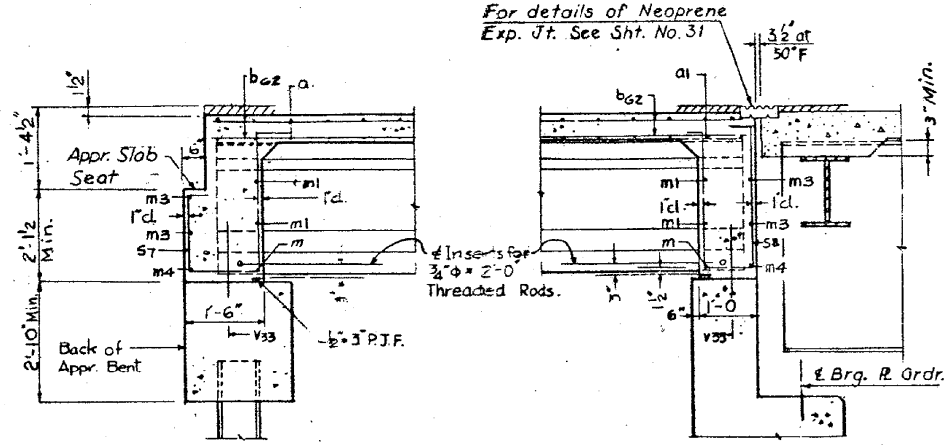


PLAN

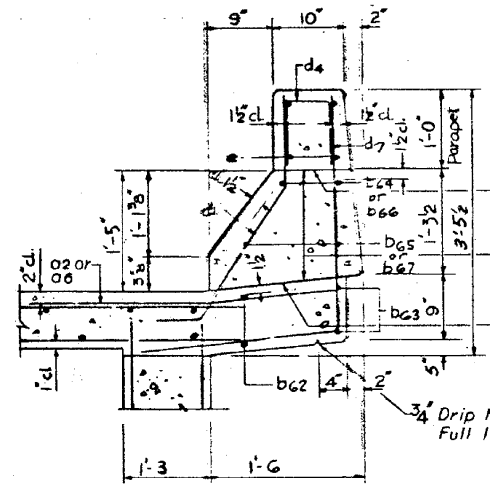


CROSS SECTION



SECTION B-E

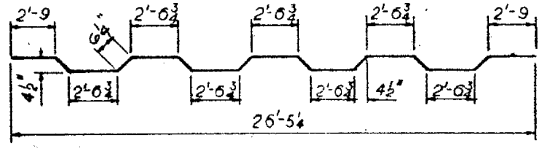
SECTION A-A



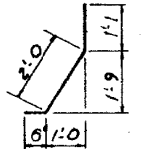
CURB SECTION

NOTE  
 \* Parapet Reinforcement and Class X Concrete are billed on Sht. No. 24  
 Cost of Aluminum Sheets shall be incidental to Class X Concrete.

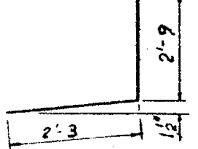
BILL OF MATERIAL				
BAR	NO.	SIZE	LENGTH	SHAPE
O7	19	#6	27'-8	
O1	40	#6	26'-0	
O2	18	#6	4'-0	
O6	18	#6	4'-0	
b62	55	#5	31'-2	
b63	4	#5	29'-2	
b64	4	#8	14'-4	
b65	4	#5	14'-4	
b66	4	#8	17'-0	
b67	4	#5	16'-2	
m	8	#5	4'-0	
m1	24	#4	5'-0	
m2	8	#4	4'-0	
m3	4	#4	26'-0	
m4	2	#5	26'-0	
S7	16	#4	7'-6	
S8	16	#4	8'-4	
S9	16	#4	7'-0	
d1	64	#5	3'-7	
d2	2	#6	9'-3	
d7	64	#4	5'-0	



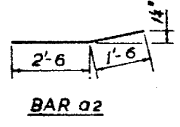
BAR Q



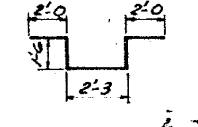
BAR d1



BAR d7



BAR a2



BAR d2

NOTE  
 For Parapet Plan and Details see Sht. No. 24  
 For placement and details of m and s bars see Sht. No. 33  
 For Bottom of Slab Elevations see Sht. No. 16  
 For Light Std Detail see Sht. No. 25  
 For Pile Encasement Detail see Sht. No. 47  
 For Section D-D see Sht. No. 35  
 For Aluminum Sheet Detail see Sht. No. 18  
 For Deck Drain Details See Sht. No. 25.

ESTIMATED QUANTITIES-ABUT 2		
ITEM	UNIT	TOTAL
REINFORCEMENT BARS	LB.	5824
CLASS X CONCRETE	C.Y.	35.7
PROTECTIVE COAT	S.Y.	13
BITUMINOUS CONCRETE SURFACE COURSE CLASS 1	TON	2.7
COAL TAR INTERLAYER PROTECTIVE COAT	S.Y.	87

REVISIONS		
DATE	BY	DESCRIPTION

DEPARTMENT OF HIGHWAYS  
 COOK COUNTY, ILLINOIS  
 GEORGE W. DUNNE  
 PRESIDENT BOARD OF COMMISSIONERS  
 SUPERINTENDENT OF HIGHWAYS

**SLAB PLAN AT ABUTMENT NO. 2**  
 STONY ISLAND CONNECTOR TO FAI 94  
 RAMP Q STRUCTURE

KNOERLE, BENDER, STONE & ASSOCIATES INC.  
 CONSULTING ENGINEERS  
 CHICAGO, ILLINOIS

PROJECT: EBU 246(77)  
 SCALE: APPROVED: *[Signature]*  
 COUNTY HWY: 122 Route No. 174A  
 SHEET: 21  
 TOTAL SHEETS: 109

BOWMAN, BARRETT & ASSOCIATES INC.  
 CONSULTING ENGINEERS  
 Chicago, Illinois  
 312.228.0100  
 www.bbainc.com

USER NAME =	DESIGNED -	REVISED -
PLOT SCALE =	CHECKED - BAK	REVISED -
PLOT DATE = 11/08/2012	DRAWN -	REVISED -
	CHECKED -	REVISED -

STATE OF ILLINOIS  
 DEPARTMENT OF TRANSPORTATION

EXISTING PLANS (FOR INFORMATION ONLY)  
 STRUCTURE NO. 016-2437

SHEET NO. S-66 OF S-83 SHEETS

F.A.I. RTE.	SECTION	COUNTY	TOTAL SHEETS	SHEET NO.
94	2012-060-BR	COOK	285	229
CONTRACT NO. 60V61				
ILLINOIS FED. AID PROJECT				