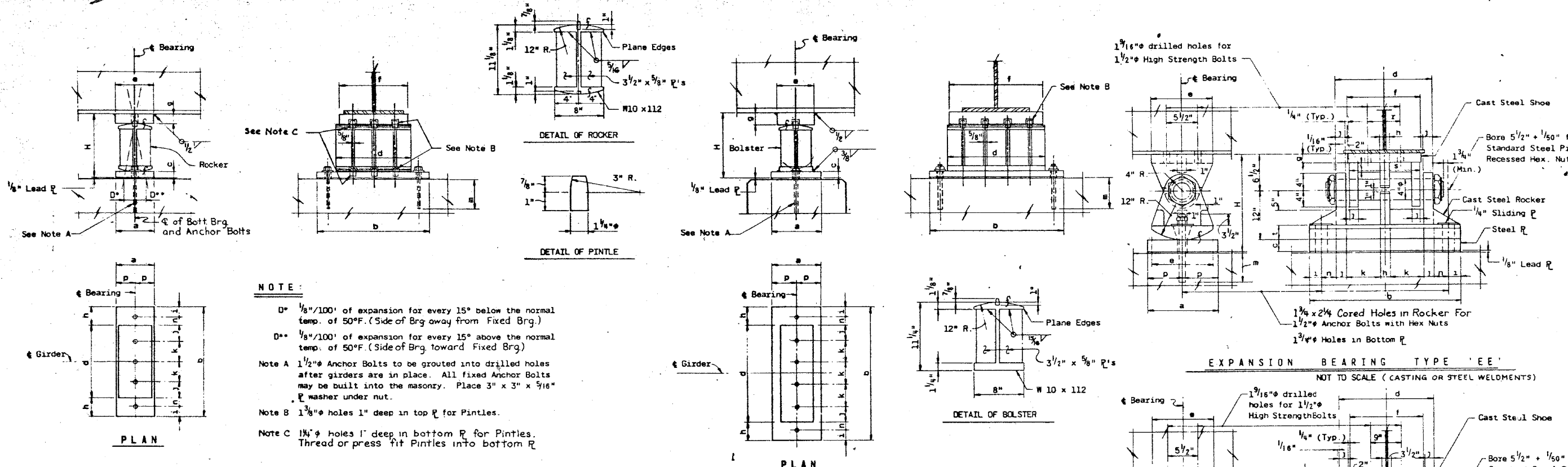


2/26/06 PM

12/7/2012

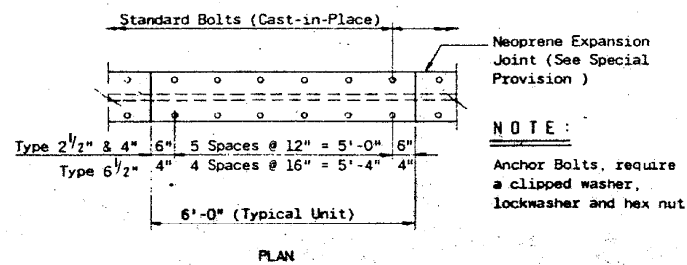
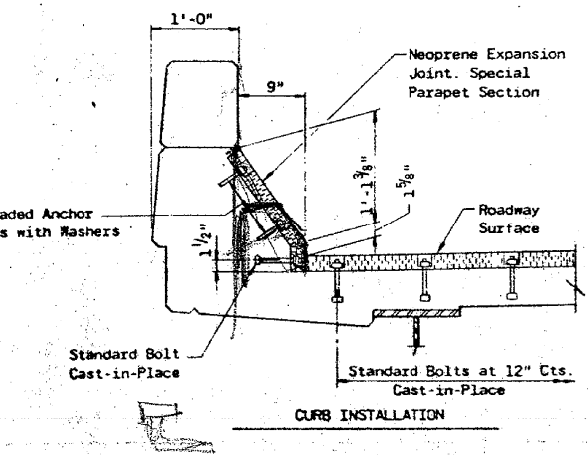
SA:1072.05.CADD\Structure\1\SN_0162437.CADD Sheet\062437-60J12-071-FY08.dgn



NOTE:
 D* = 1/8" / 100' of expansion for every 15° below the normal temp. of 50°F. (Side of Brg. away from Fixed Brg.)
 D** = 1/8" / 100' of expansion for every 15° above the normal temp. of 50°F. (Side of Brg. toward Fixed Brg.)
 Note A 1/2" Anchor Bolts to be grouted into drilled holes after girders are in place. All fixed Anchor Bolts may be built into the masonry. Place 3" x 3" x 5/16" P washer under nut.
 Note B 1 3/8" holes 1" deep in top R for Pintles.
 Note C 1 3/4" holes 1" deep in bottom R for Pintles. Thread or press fit Pintles into bottom R

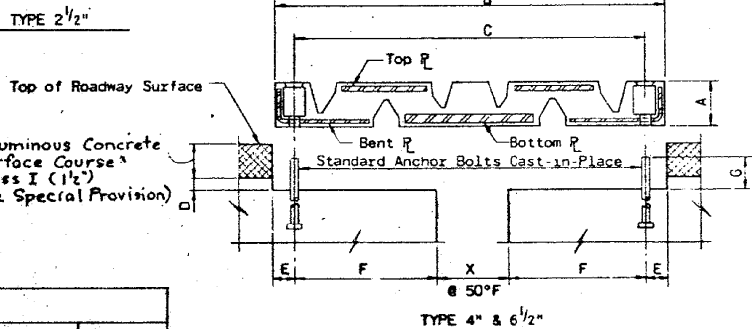
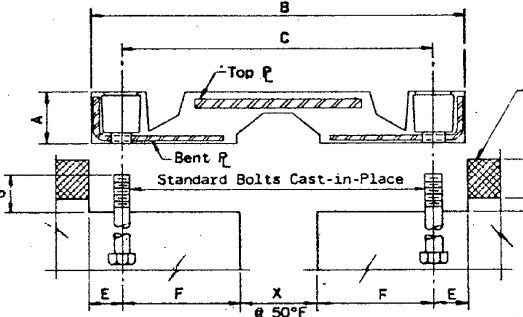
BEARING SCHEDULE																		
TYPE	a	b	c	d	e	f	g	h	i	j	k	m	n	p	t	H	z	s
E	9"	27"	1 3/4"	18"	9"	16 1/2"	2 1/2"	4 1/2"	2 1/2"	4"	5"	15"	2"	4 1/2"	---	15 3/8"	---	---
F	12"	33"	1 1/2"	24"	9"	22 1/2"	3"	4 1/2"	2 1/2"	3 3/4"	5 1/2"	15"	2"	6"	---	15 3/4"	---	---
EE-1	9"	29"	2 1/4"	12 1/2"	10"	16"	2"	0"	2 1/4"	1"	5 1/4"	15"	6"	4 1/2"	3"	20 3/4"	4 3/4"	10"
EE-2	12"	36"	3"	19"	12"	16"	2"	3 1/2"	2 1/4"	1 1/4"	6 1/2"	15"	6 1/4"	6"	4 1/2"	21 1/2"	9"	16"
FF	12"	36"	3"	19"	12"	16"	2"	3 1/2"	2 1/4"	1 1/4"	6 1/2"	15"	6 1/4"	6"	---	21 1/2"	9"	16"

* MIDDLE R IS OMITTED.



JOINT SCHEDULE												
TYPE	A	B	C	D	E	F	G	X @ 50°F.	ANCHOR BOLT	THICKNESS TOP R	THICKNESS BOTTOM R	THICKNESS BENT R
2 1/2"	1 3/16"	13 1/2"	11"	1/2"	1 1/2"	4 1/4"	1 1/2"	2 1/2"	5/8" x 6"	3/8"	---	1/4"
4"	2 1/8"	22 3/4"	19 5/8"	1 3/16"	1 1/2"	8 1/16"	1 1/2"	3 1/2"	3/4" x 6"	5/16"	5/8"	5/16"
6 1/2"	3"	28"	24 1/4"	1 11/16"	2"	9 3/8"	2"	4 1/2"	3/4" x 6"	3/8"	1"	3/8"

NEOPRENE EXPANSION JOINT DETAILS NOT TO SCALE



REVISIONS		
DATE	BY	DESCRIPTION

- NOTES**
1. For location of Bearing Types see sht Nos. 27, 28, 29
 2. For location of Joints see sht Nos. 18, 19, & 20
 3. Erection of Bearings & Anchorage in accordance to Article 507.08 of Standard Specifications
 4. Calculated weight of Structural Steel this sht 84,120 LB (Included in weights of Structural Steel Quantities on sht No. 26). Calculated weight of Bearings includes Rockers, Bolsters, Bearing Rs, Lead Rs, anchor bolts, nuts and washers.

DEPARTMENT OF HIGHWAYS
 COOK COUNTY, ILLINOIS
 GEORGE W. DUNNE, PRESIDENT BOARD OF COMMISSIONERS
 SUPERINTENDENT OF HIGHWAYS

STRUCTURAL STEEL BEARING DETAILS
 STONY ISLAND CONNECTOR TO FAI 94
 RAMP Q STRUCTURE

PROJECT: EBU 246(22)
 SCALE: AS SHOWN
 APPROVED: [Signature]

APPROVED: [Signature] 4-11-72
 COUNTY HWY. ROUTE NO. 174 A
 SHEET NO. 51 OF 109

BOWMAN, BARRETT & ASSOCIATES INC.
 CONSULTING ENGINEERS
 Chicago, Illinois
 312.228.0100
 www.bbainc.com

USER NAME =
 DESIGNED -
 CHECKED - BAK
 PLOT SCALE =
 DRAWN -
 PLOT DATE = 11/08/2012

DESIGNED -
 CHECKED -
 DRAWN -
 CHECKED -

REVISED -
 REVISED -
 REVISED -
 REVISED -

STATE OF ILLINOIS
 DEPARTMENT OF TRANSPORTATION

EXISTING PLANS (FOR INFORMATION ONLY)
 STRUCTURE NO. 016-2437

SHEET NO. S-71 OF S-83 SHEETS

F.A.I. RTE. 94
 SECTION 2012-060-BR
 COUNTY COOK
 TOTAL SHEETS 285
 SHEET NO. 234
 CONTRACT NO. 60V61
 ILLINOIS FED. AID PROJECT