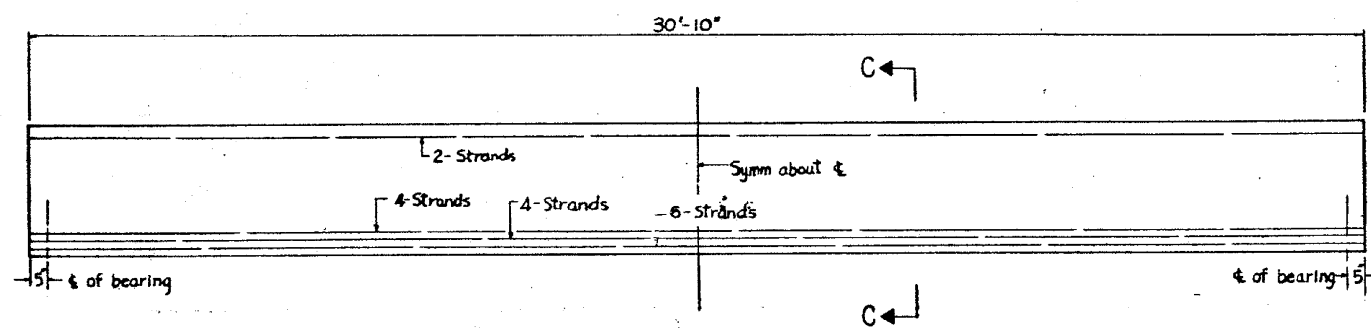
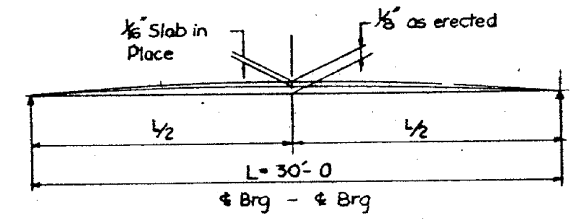


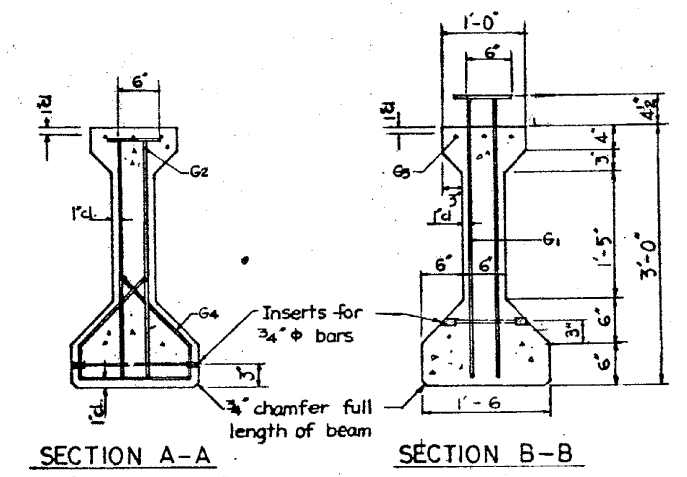
ELEVATION OF BEAM
SHOWING REINFORCEMENT & DIMENSIONS



ELEVATION OF BEAM
SHOWING PRESTRESSING STEEL

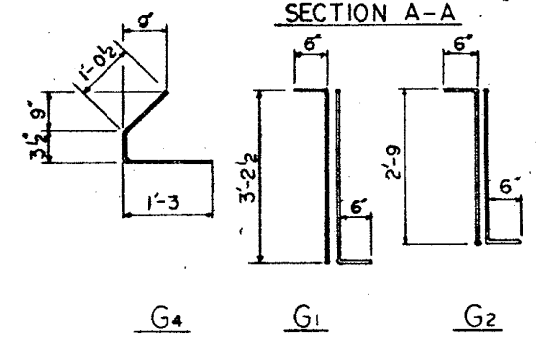


CAMBER DIAGRAM



SECTION A-A

SECTION B-B



G4

G1

G2

SECTION C-C

BAR LIST

Bar	No.	Size	Length	Shape
G1	42	#4	4'-2 1/2"	7L
G2	12	#4	3'-9"	7L
G3	6	#5	16'-0"	---
G4	48	#3	2'-7"	L

* for one beam only

BILL OF MATERIAL

Item	Unit	Total
Furnishing & Erecting Precast Prestressed Concrete I-Beam, 36"	Lin. ft	93

NOTES

- Prestressing tendons are 7 wire 7/16" Nominal diameter stress relieved strands. $f_s = 248$ ksi; $f_{si} = 173$ ksi.
- All inserts and threaded rods for inserts, reinforcement and Prestressing Steel, and other items which are cast into the Precast Concrete I-Beams shall be included in the contract unit price per lineal foot of Furnishing and Erecting Precast Prestressed Concrete I-Beam, 36".
- Inserts for 3/4" threaded rod are to be two strut coil type.
- Steel for lifting hooks shall be non-deformed bars of Structural or Intermediate grade billet steel.
- An alternate strand pattern using Extra High Strength Prestressing Strand (270ksi.) is permitted.
- End of beam to be encased with cast in place concrete shall not be coated with asphalt paint for diaphragm details see sheet No. 33.

REVISIONS

DATE	BY	DESCRIPTION

DEPARTMENT OF HIGHWAYS
COOK COUNTY, ILLINOIS
GEORGE W. DUNNE
PRESIDENT BOARD OF COMMISSIONERS
SUPER-INTENDENT OF HIGHWAYS

PRECAST PRESTR. CONC. I-BEAM 36"
STONY ISLAND CONNECTOR TO FAI 94
RAMP Q STRUCTURE

PROJECT EBU 246(77)

KNORLE, BENDER, STONE & ASSOCIATES INC.
CONSULTING ENGINEERS
CHICAGO, ILLINOIS

APPROVED 4-11-72
[Signature]
CHIEF ENGINEER

F.A. Route No.	COUNTY HWY Route No.	Sheet No.	Total Sheets	Drawing No.
122	174A	32	109	

2/26/09 PM 12/7/2012 SA:\072_05_CADD\Structure\1 SN 0162437\CADD Sheets\062437-60J12-972-F09.dgn

BOWMAN, BARRETT & ASSOCIATES INC.
CONSULTING ENGINEERS
Chicago, Illinois
312.228.0100
www.bbainc.com

USER NAME =	DESIGNED -	REVISED -
PLOT SCALE =	CHECKED - BAK	REVISED -
PLOT DATE = 11/08/2012	DRAWN -	REVISED -
	CHECKED -	REVISED -

STATE OF ILLINOIS
DEPARTMENT OF TRANSPORTATION

EXISTING PLANS (FOR INFORMATION ONLY)
STRUCTURE NO. 016-2437
SHEET NO. S-72 OF S-83 SHEETS

F.A.I. RTE.	SECTION	COUNTY	TOTAL SHEETS	SHEET NO.
94	2012-060-BR	COOK	285	235
CONTRACT NO. 60V61				
ILLINOIS FED. AID PROJECT				