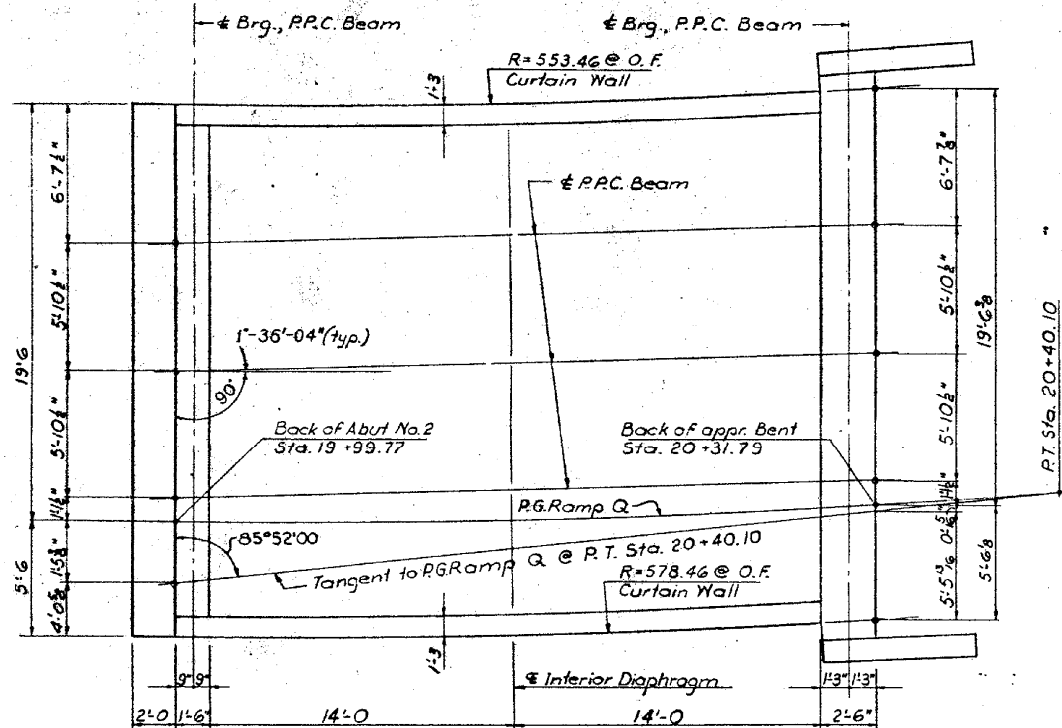


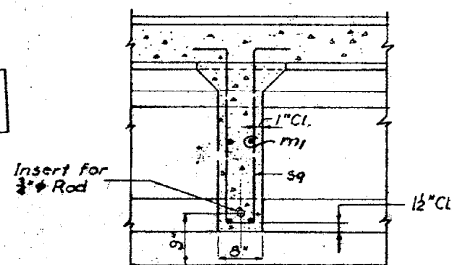
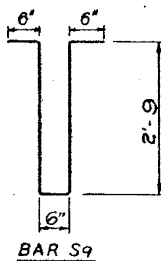
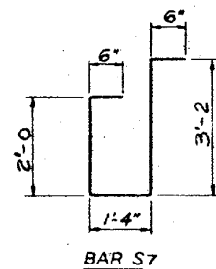
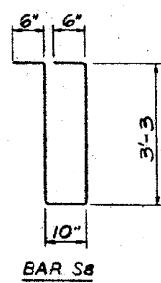
2/27/03 PM

12/7/2012

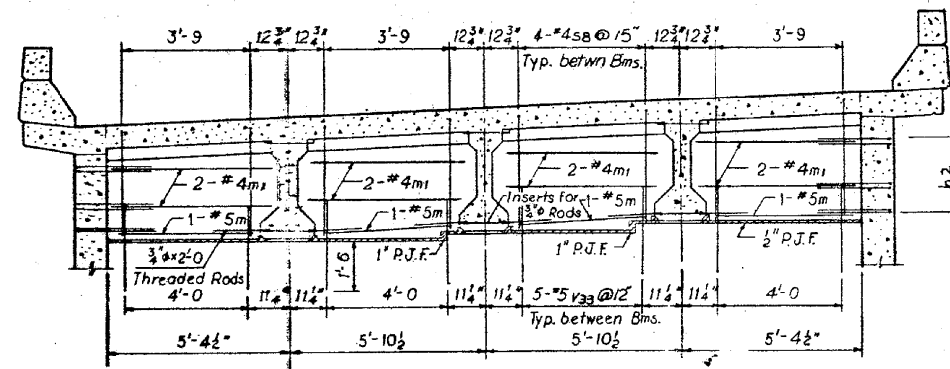
SA:1072.05\_CADD Structure.dwg 0162437.CADD Sheets:062437-60J12-973-FY10.dgn



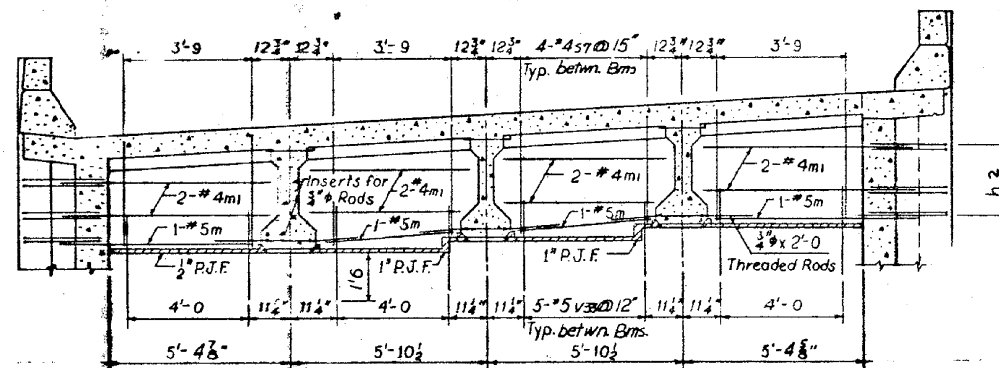
FRAMING PLAN



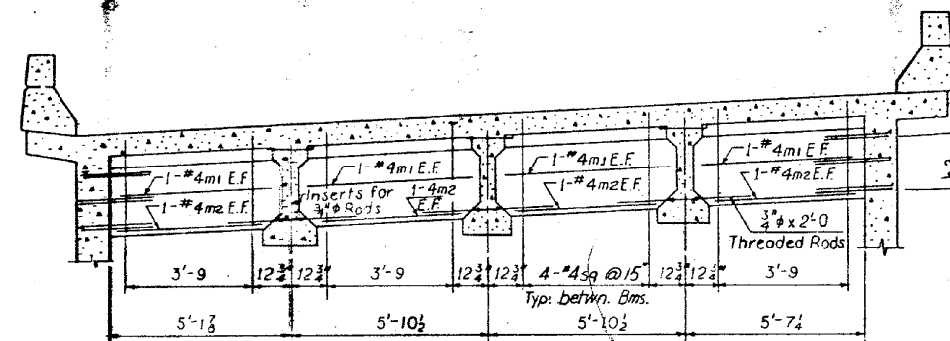
SECTION THRU INTERIOR DIAPHRAGM



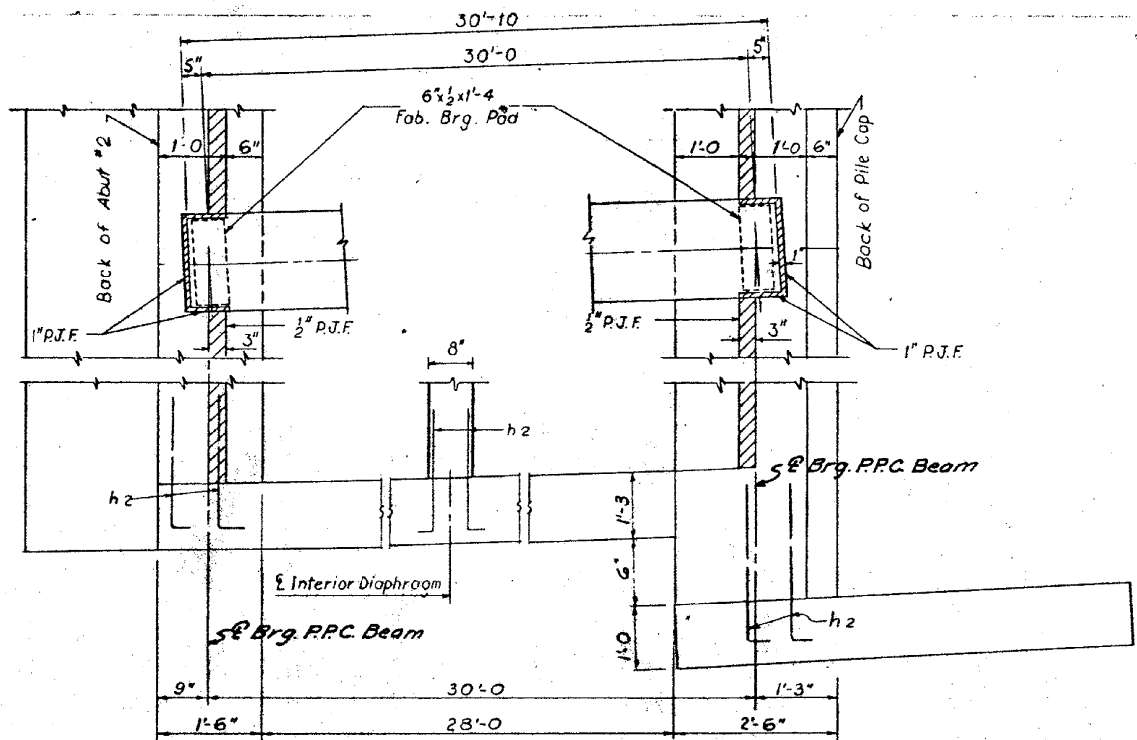
DIAPHRAGM AT ABUTMENT 2



DIAPHRAGM AT APPROACH BENT



INTERIOR DIAPHRAGM



PARTIAL PLAN

NOTE

5" Brg. P.P.C. Beams, Back of Abut. #2 & Back of approach bent are all parallel.  
 For P.C.C. Beam Details See Sht. No 32  
 Preformed Joint Filler shall be incidental to Class X Concrete.  
 For Bill of Material See Sheet No. 21

REVISIONS	
DATE	DESCRIPTION

DEPARTMENT OF HIGHWAYS  
 COOK COUNTY, ILLINOIS  
 GEORGE W. DUNNE  
 PRESIDENT BOARD OF COMMISSIONERS  
 SUPERINTENDENT OF HIGHWAYS

DIAPHRAGM DETAILS  
 STONY ISLAND CONNECTOR TO FAI 94  
 RAMP Q STRUCTURE

PROJECT: EBU246171  
 SCALE: AS SHOWN  
 APPROVED: [Signature]

APPROVED: [Signature]	FA Route No. 122	COUNTY HWY. Route No. 174A	Sheet No. 133	Total Sheets 109	Drawing No.
-----------------------	------------------	----------------------------	---------------	------------------	-------------

BOWMAN, BARRETT & ASSOCIATES INC.  
 CONSULTING ENGINEERS  
 Chicago, Illinois  
 312.228.0100  
 www.bbainc.com

USER NAME =  
 PLOT SCALE =  
 PLOT DATE = 11/08/2012

DESIGNED -  
 CHECKED - BAK  
 DRAWN -  
 CHECKED -

REVISED -  
 REVISED -  
 REVISED -  
 REVISED -

STATE OF ILLINOIS  
 DEPARTMENT OF TRANSPORTATION

EXISTING PLANS (FOR INFORMATION ONLY)  
 STRUCTURE NO. 016-2437

SHEET NO. S-73 OF S-83 SHEETS

F.A.I. RTE. 94	SECTION 2012-060-BR	COUNTY COOK	TOTAL SHEETS 285	SHEET NO. 236
CONTRACT NO. 60V61				
ILLINOIS FED. AID PROJECT				