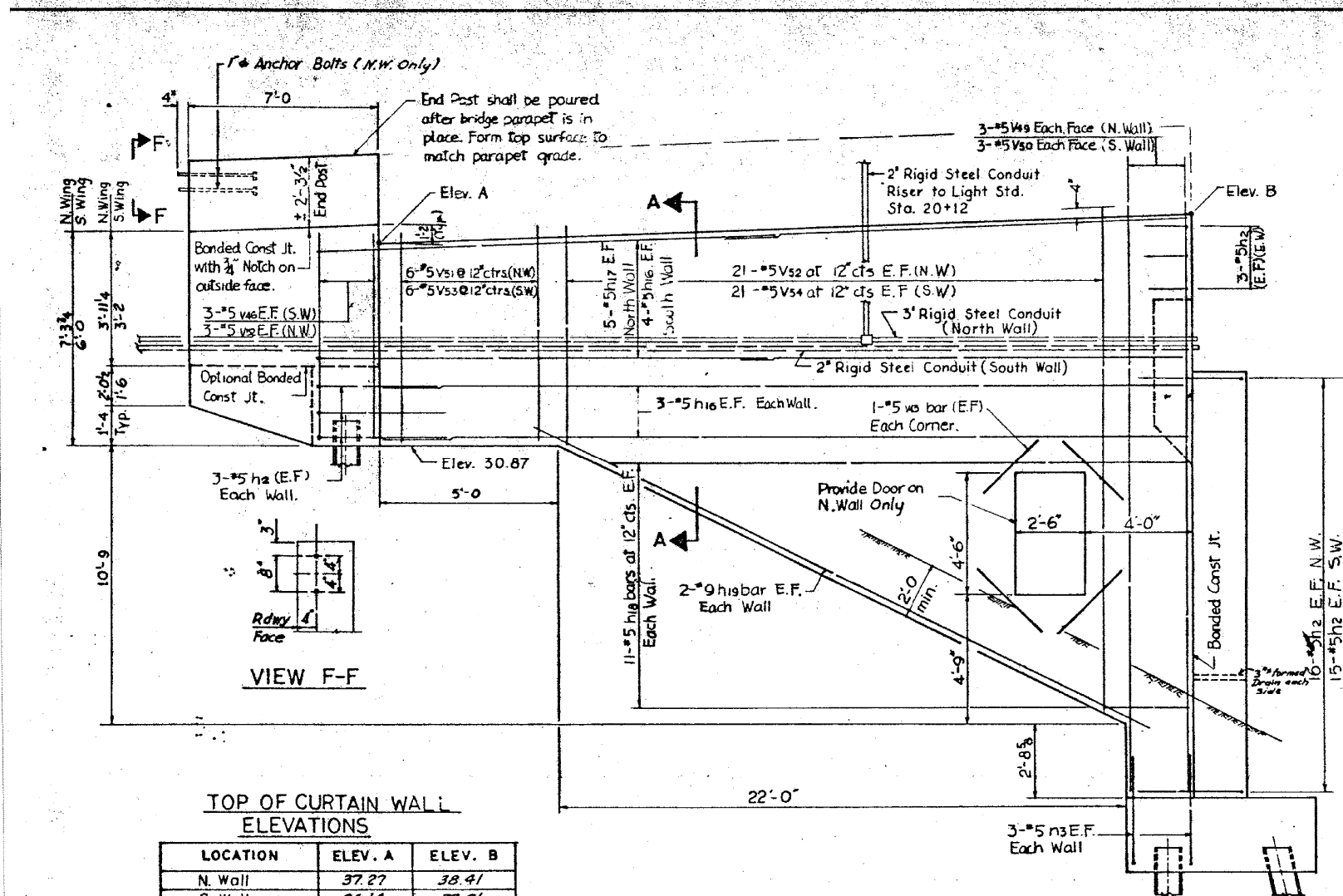


2/27/16 PM

12/7/2012

SA:1072, 05-CADD, S-Structure-1, SN: 0162437, CADD Sheets 062437-60J12-976-FY13.dgn



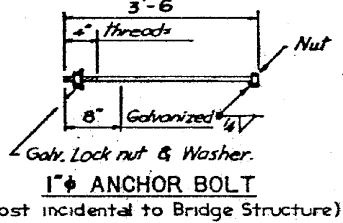
BILL OF MATERIAL

BAR	NO.	SIZE	LENGTH	SHAPE
h2	110	#5	4'-4"	
h10	36	#5	24'-9"	
h11	2	#5	24'-9"	
h12	6	#5	8'-0"	
h13	3	#5	2'-6"	
h14	4	#5	6'-6"	
h15	42	#5	6'-9"	
h16	12	#5	29'-3"	
h17	18	#5	31'-8"	
h18	22	#5	26'-6"	
h19	4	#5	24'-6"	
n2	25	#9	7'-0"	
n3	37	#5	6'-4"	
p11	10	#7	27'-9"	
p12	4	#7	8'-6"	
s11	44	#4	6'-2"	
t1	32	#6	6'-8"	
V33	20	#5	2'-0"	
V38	16	#6	4'-9"	
V39	25	#5	13'-9"	
V40	25	#9	13'-9"	
V41	23	#5	10'-0"	
V42	23	#5	10'-9"	
V43	8	#5	5'-0"	
V44	6	#5	6'-8"	
V45	6	#6	6'-3"	
V46	10	#6	7'-3"	
V47	6	#6	7'-4"	
V48	10	#6	8'-3"	
V49	6	#5	21'-0"	
V50	6	#5	19'-9"	
V51	12	#5	7'-3"	
V52	21	#5	25'-0"	
V53	12	#5	5'-9"	
V54	21	#5	22'-6"	
W1	8	#5	26'-2"	

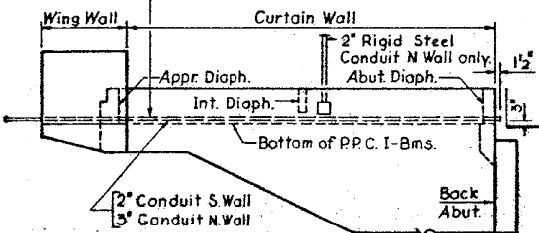
TOP OF CURTAIN WALL ELEVATIONS

LOCATION	ELEV. A	ELEV. B
N. Wall	37.27	38.41
S. Wall	36.14	37.01

SIDE ELEVATION
Looking North



Locate 2" or 3" Galv. Conduit (Sch. 40 Pipe) ±9" inside of fascia beam web and parallel to beam line. Extend to clear the wing wall and terminate at a point outside of shoulder. Thread and cap each end. Cost Incidental.



NOTES

S.W. Indicates South Wing Wall or South Curtain Wall.
N.W. Indicates North Wing Wall or North Curtain Wall.
E.F. Indicates Each Face.
E.W. Indicated Each Wall or Each Wing Wall.

NOTE

For Abutment No. 2 Plan and Elevation See Sht. No. 016-2437
For Pile Encasement Details See Sht. No. 016-2438

DOOR ELEVATION

(Cost of door and frame are incidental)

SECTION C-C

SECTION A-A

ESTIMATED QUANTITIES

ITEM	UNIT	TOTALS
REINFORCEMENT BARS	LB.	9832
CLASS "X" CONCRETE	C.Y.	126.4
RIGID STEEL CONDUIT, 2" DIA. LIN. FT.		5.5
RIGID STEEL CONDUIT, 3" DIA. LIN. FT.		4.5
FURN. STEEL PILES HP10X42 LIN. FT.		1020
DRIVING STEEL PILES LIN. FT.		1020
TEST PILES HP10X42	EACH	1

REVISIONS

DATE	BY	DESCRIPTION

DEPARTMENT OF HIGHWAYS
COOK COUNTY, ILLINOIS
GEORGE W. DUNNE
PRESIDENT BOARD OF COMMISSIONERS

ABUTMENT NO. 2 DETAILS
STONY ISLAND CONNECTOR TO FAI 94
RAMP Q STRUCTURE

PROJECT EBU246 (70) ...
SCALE
APPROVED: [Signature]

APPROVED: 4-11-72
Route No. 122
COUNTY HWY No. 174A
Sheet No. 36
Total Sheets 109

BOWMAN, BARRETT & ASSOCIATES INC.
CONSULTING ENGINEERS
Chicago, Illinois
312.228.0100
www.bbainc.com

USER NAME =	DESIGNED -	REVISED -
PLOT SCALE =	CHECKED - BAK	REVISED -
PLOT DATE = 11/08/2012	DRAWN -	REVISED -
	CHECKED -	REVISED -

STATE OF ILLINOIS
DEPARTMENT OF TRANSPORTATION

EXISTING PLANS (FOR INFORMATION ONLY)
STRUCTURE NO. 016-2437

SHEET NO. S-76 OF S-83 SHEETS

F.A.I. RTE.	SECTION	COUNTY	TOTAL SHEETS	SHEET NO.
94	2012-060-BR	COOK	285	239

CONTRACT NO. 60V61
ILLINOIS FED. AID PROJECT