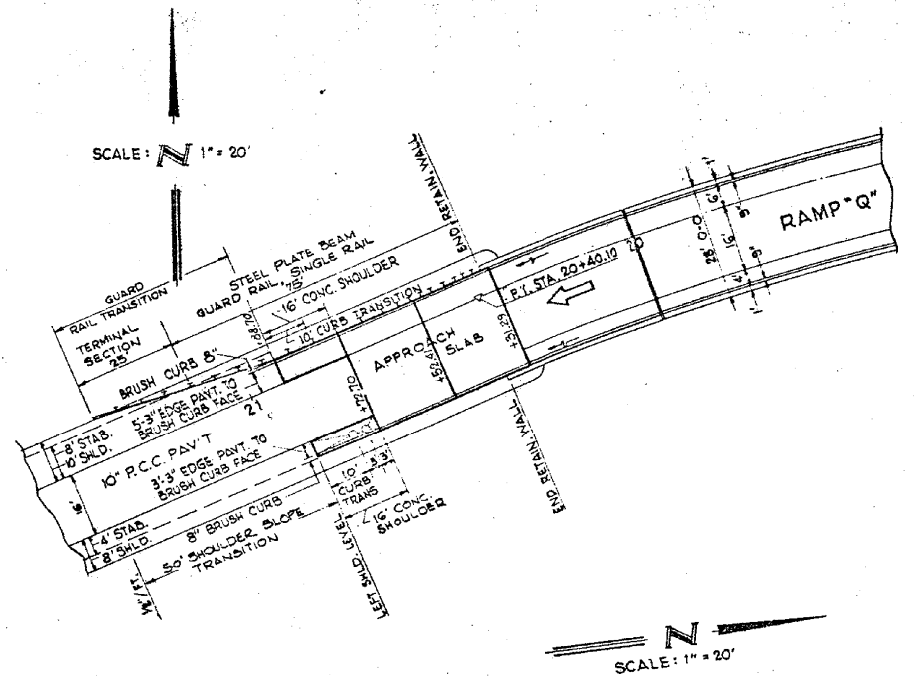


County	Fiscal	Sheet	Total
Highway	Year	No.	Sheets
174A	1972	246	246
Section 174A-0101.07 C.A.			



GENERAL NOTES

The concrete shoulder pavement will be measured in square yards and paid for as P.C. CONCRETE BRIDGE APPROACH SHOULDER PAVEMENT which shall include the cost of the tie bars, reinforcement, joint fillers, and sealing.

Catch Basins shall be paid for in accordance with Section 612 of the Standard Specifications.

The cost of the Brush Curb when adjacent to the concrete shoulder and approach slab, shall not be paid for separately but shall be included in contract unit price per square yard for P.C. CONCRETE BRIDGE APPROACH SHOULDER PAVEMENT and P.C. CONCRETE PAVEMENT (16'-12" - 16'1") respectively.

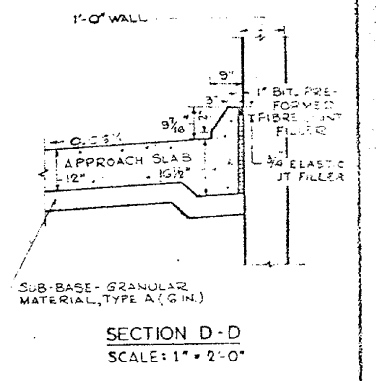
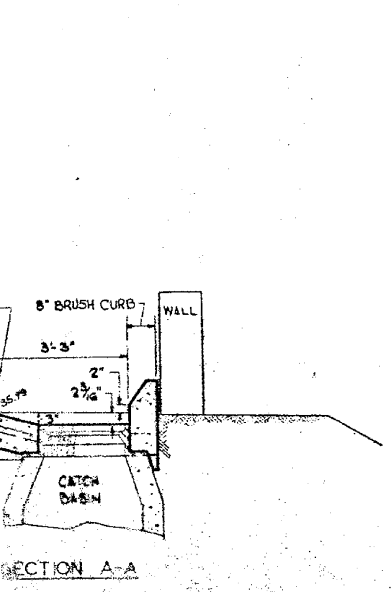
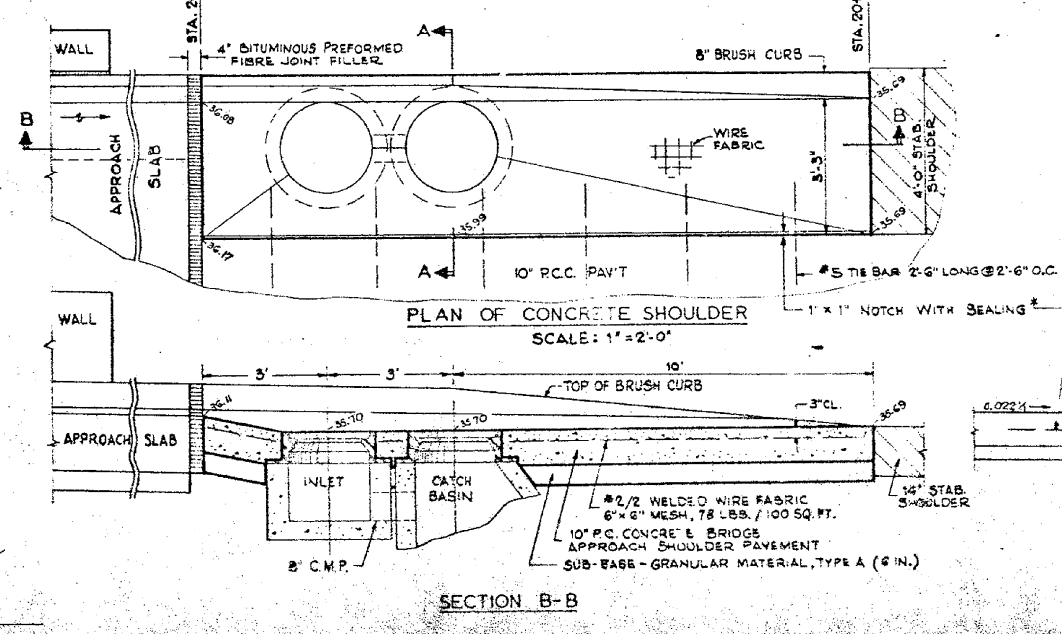
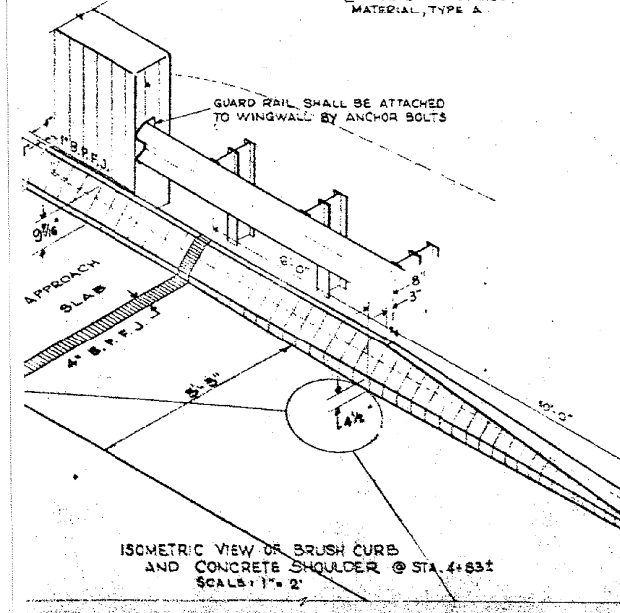
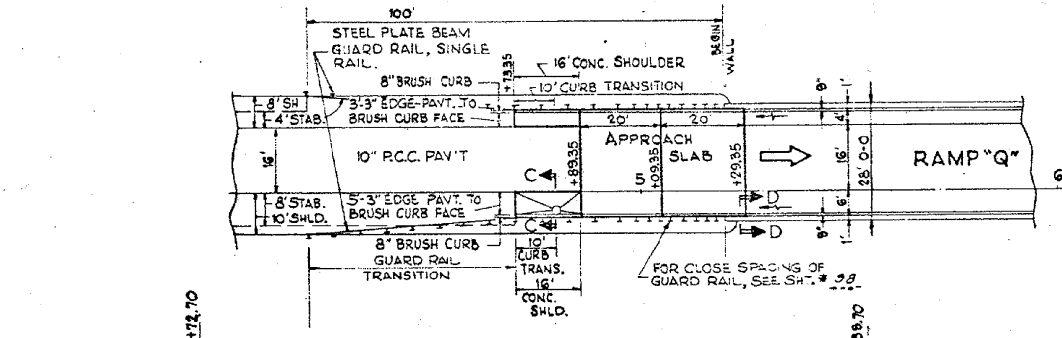
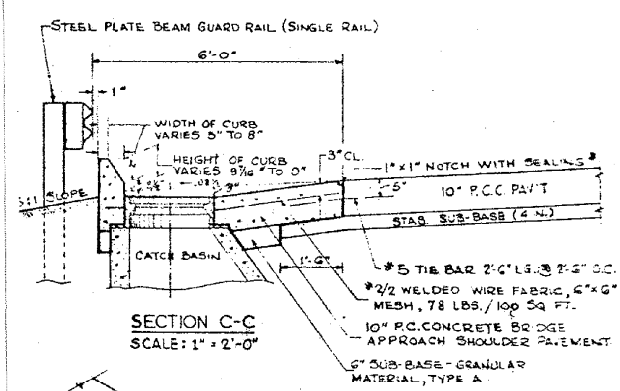
Sub-Base under the Concrete Shoulder, shall be SUB-BASE GRANULAR MATERIAL TYPE A (6 in.).

The face of the Brush Curb shall be a continuation of the face of the curb on the structure.

* Where indicated, joints shall be sealed with two component, non-staining, gray, sealing compound with polysulfide liquid polymers gun grade with primers.

The Face of the Steel Plate Beam Guard Rail shall have a 46'-48' transition from the back of the Brush Curb to the edge of shoulder.

The cost of the 4 in. Preformed Expansion Joint Filler shall be included in the contract unit price per square yard for P.C. CONCRETE PAVEMENT (16'-12" - 16'1").



Scales As Noted

COUNTY OF COOK
DEPARTMENT OF HIGHWAYS

P.C. CONCRETE BRIDGE APPROACH SHOULDER PAVEMENT & BRUSH CURB

CON. PREPARED BY: [Signature]
DRAWN: W.I.W.
CHECKED: A.J.N.

2/27/37 PM

12/7/2012

SA:1072.05.CADD.Structure.dwg 0162437.CADD Sheet 0162437-60J12-061-FY18.dgn

BOWMAN, BARRETT & ASSOCIATES INC.
CONSULTING ENGINEERS
Chicago, Illinois
312.228.0100
www.bbainc.com

USER NAME =
DESIGNED -
CHECKED - BAK
PLOT SCALE =
DRAWN -
PLOT DATE = 11/08/2012

DESIGNED -
CHECKED - BAK
DRAWN -
CHECKED -

REVISED -
REVISED -
REVISED -
REVISED -

STATE OF ILLINOIS
DEPARTMENT OF TRANSPORTATION

EXISTING PLANS (FOR INFORMATION ONLY)
STRUCTURE NO. 016-2437

SHEET NO. S-81 OF S-83 SHEETS

F.A.I. RTE.	SECTION	COUNTY	TOTAL SHEETS	SHEET NO.
94	2012-060-BR	COOK	285	244
CONTRACT NO. 60V61				

ILLINOIS FED. AID PROJECT