

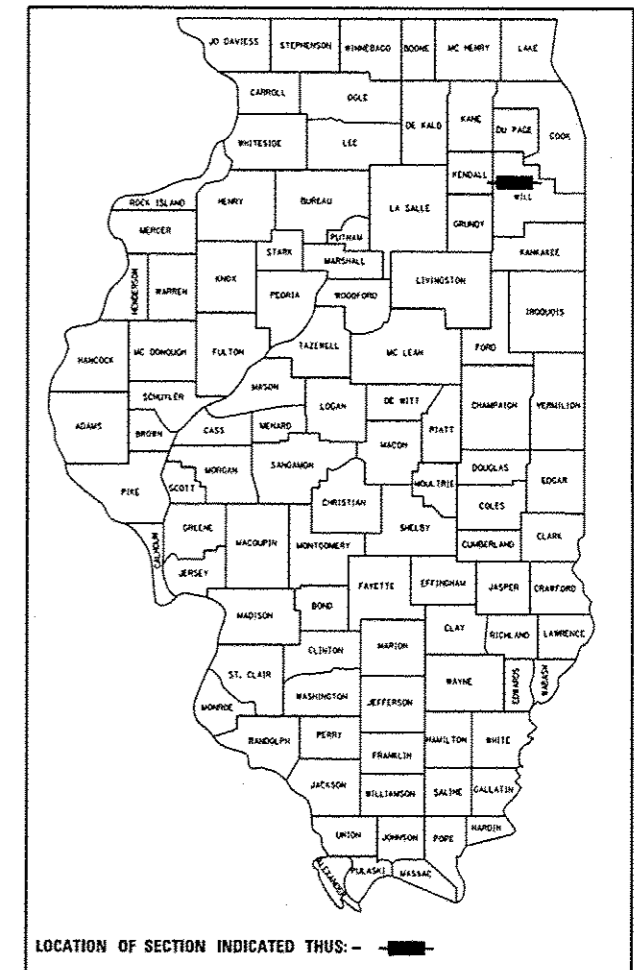
STATE OF ILLINOIS  
DEPARTMENT OF TRANSPORTATION  
DIVISION OF HIGHWAYS

**PROPOSED  
HIGHWAY PLANS**

FAP ROUTE 607 /US 52 (JEFFERSON ST.)  
FROM JOYCE RD. TO RAYNOR AVE.  
SECTION 128RS-2  
RESURFACING  
WILL COUNTY  
C-91-112-13

F.A.P. RTE.	SECTION	COUNTY	TOTAL SHEETS	SHEET NO.
607	128RS-2	WILL	27	1
		ILLINOIS	CONTRACT NO. 60V93	

D-91-112-13



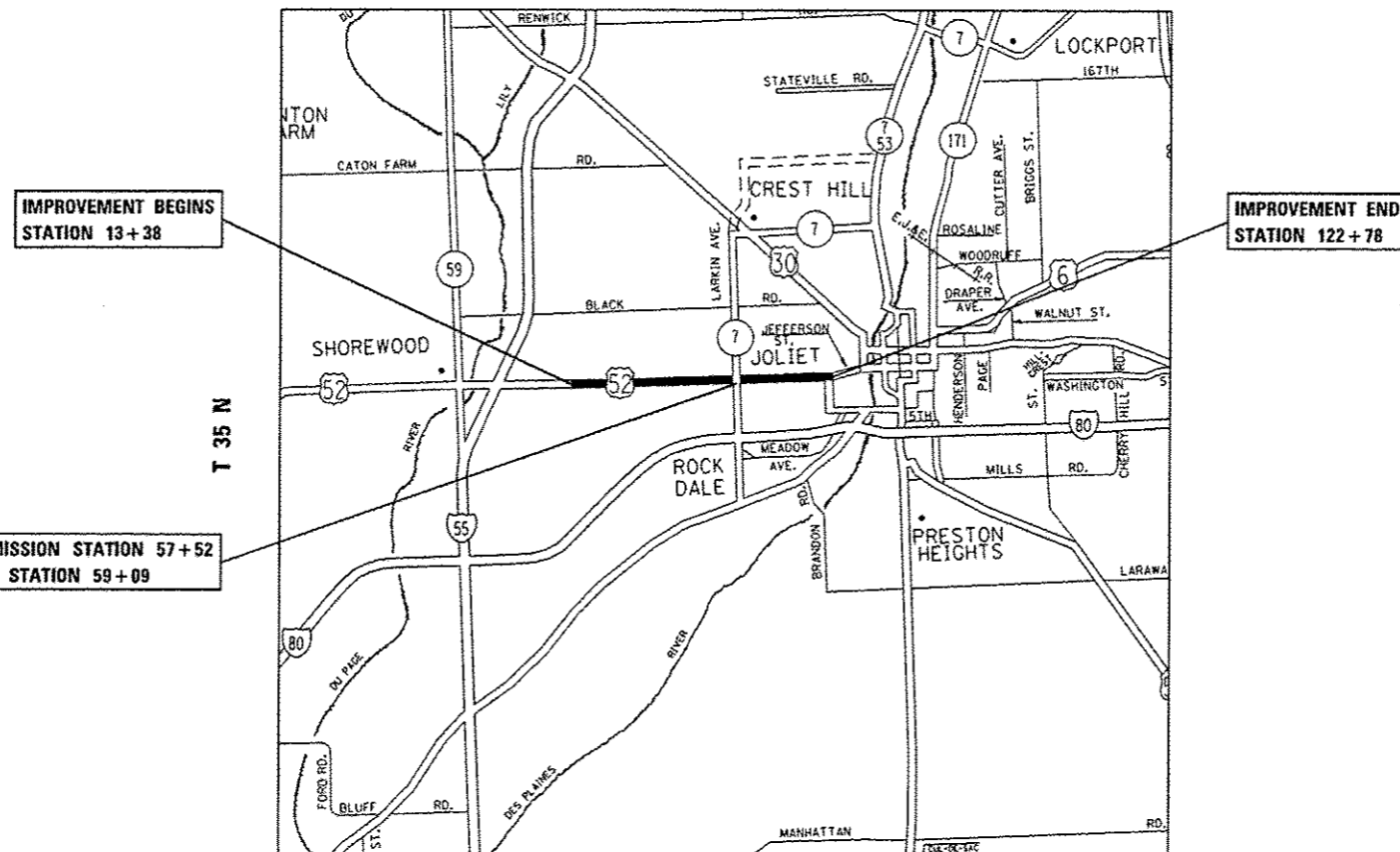
FOR INDEX OF SHEETS, SEE SHEET NO. 2

IMPROVEMENT IS LOCATED IN THE CITY OF JOLIET

**TRAFFIC DATA:**

2011 ADT= 23,200 - 28,500  
POSTED SPEED LIMIT= 30 - 35 MPH

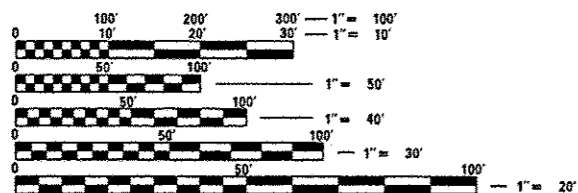
R 10 E



IMPROVEMENT BEGINS  
STATION 13+38

IMPROVEMENT ENDS  
STATION 122+78

OMISSION STATION 57+52  
TO STATION 59+09



FULL SIZE PLANS HAVE BEEN PREPARED USING STANDARD ENGINEERING SCALES. REDUCED SIZED PLANS WILL NOT CONFORM TO STANDARD SCALES. IN MAKING MEASUREMENTS ON REDUCED PLANS, THE ABOVE SCALES MAY BE USED.

J.U.L.I.E.  
JOINT UTILITY LOCATION INFORMATION FOR EXCAVATION  
1-800-892-0123  
OR 811

PROJECT ENGINEER JENPAI CHANG (847)705-4432  
PROJECT MANAGER KEN ENG (847)705-4247

CONTRACT NO. 60V93

JOLIET TOWNSHIP

GROSS LENGTH = 11,026 FT. = 2.09 MILES  
NET LENGTH = 10,883 FT. = 2.06 MILES

STATE OF ILLINOIS  
DEPARTMENT OF TRANSPORTATION  
DIVISION OF HIGHWAYS

SUBMITTED January 14, 2013  
John F. ...  
DEPUTY DIRECTOR OF HIGHWAYS, REGION ENGINEER

March 22, 2013  
John D. Baranzelli, P.E.  
ENGINEER OF DESIGN AND ENVIRONMENT

March 22, 2013  
Omair Osman, P.E.  
DIRECTOR OF HIGHWAYS, CHIEF ENGINEER

**PRINTED BY THE AUTHORITY  
OF THE STATE OF ILLINOIS**