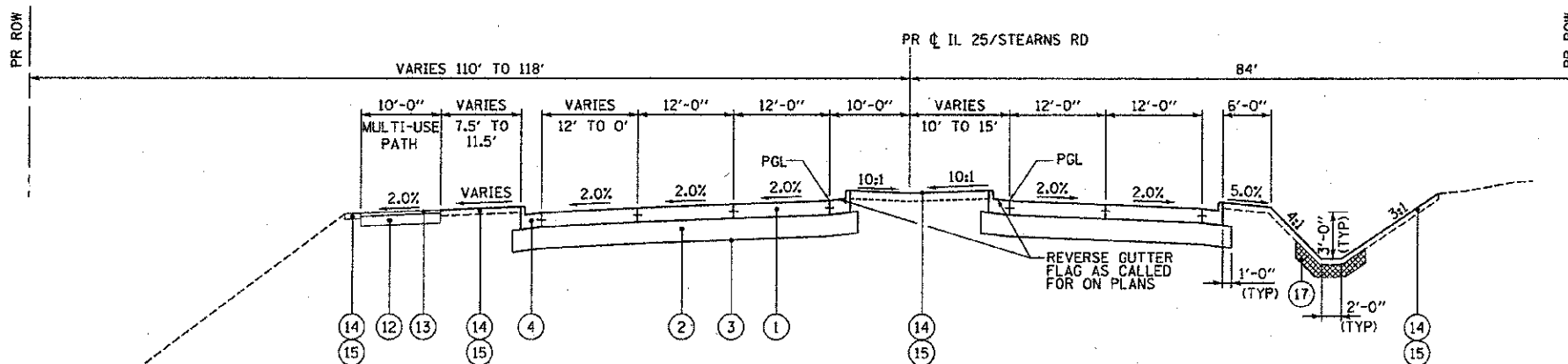


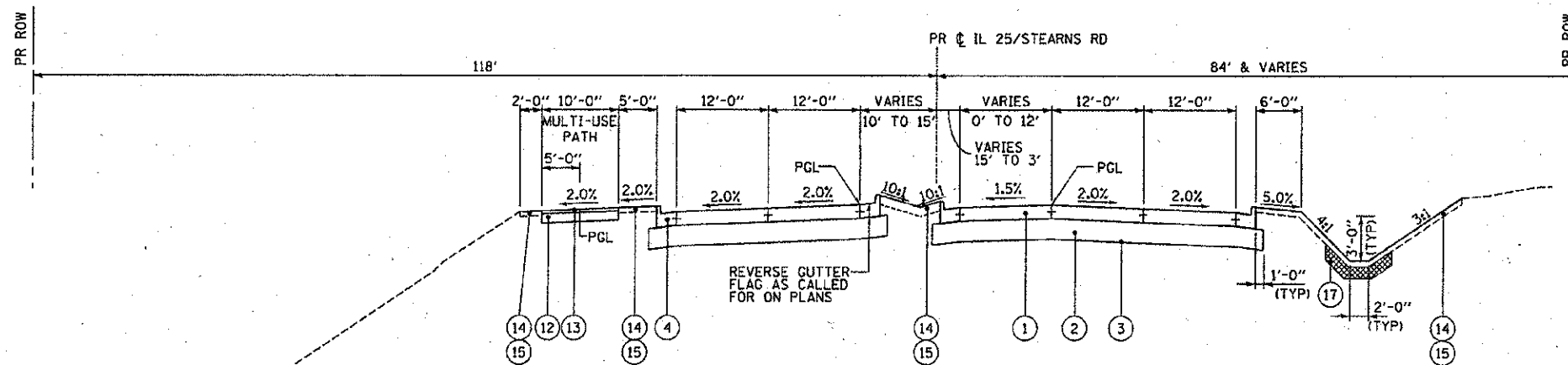
PROPOSED TYPICAL SECTION NO 3

STA 110+45.64 TO STA 114+81.61, IL 25/STEARNS ROAD
SE TRANS OUT STA 113+82.27 TO STA 115+59.86



PROPOSED TYPICAL SECTION NO 4

STA 115+27.00 TO STA 117+52, IL 25/STEARNS ROAD



PROPOSED TYPICAL SECTION NO 5

STA 117+52 TO STA 119+62, IL 25/STEARNS ROAD

LEGEND

- ① PORTLAND CEMENT CONCRETE PAVEMENT 10" (JOINTED) (ALL REQUIRED JOINTS INCLUDED IN THE COST OF THIS PAY ITEM)
- ② AGGREGATE SUBGRADE IMPROVEMENT, 12"
- ③ GEOTECHNICAL FABRIC FOR GROUND STABILIZATION
- ④ COMBINATION CONCRETE CURB & GUTTER, TYPE B-6.24
- ⑤ CONCRETE MEDIAN, TYPE SB (SPEC)
- ⑥ POLYMERIZED HOT-MIX ASPHALT SURFACE COURSE, MIX "F", N90 (IL 9.5mm), 2"
- ⑦ POLYMERIZED HOT-MIX ASPHALT BINDER COURSE, IL-19.0, N90, 2 1/4" (TOP LIFT)
HOT-MIX ASPHALT BINDER IL-19.0, N90, 8 1/4" (3 LIFTS)
- ⑧ BITUMINOUS MATERIALS (PRIME COAT)
- ⑨ HOT-MIX ASPHALT SHOULDER, 6" (2 LIFTS)
- ⑩ HOT-MIX ASPHALT SURFACE, MIX "D", N50, 2"
- ⑪ HOT-MIX ASPHALT BINDER IL-19.0mm, N50, 9" (4 LIFTS)
- ⑫ AGGREGATE BASE COURSE, TYPE B, 6"
- ⑬ HOT-MIX ASPHALT SURFACE, MIX "D", N50, 2"
- ⑭ TOPSOIL EXCAVATION AND PLACEMENT
- ⑮ SEEDING AND EROSION CONTROL BLANKET (SEE LANDSCAPING PLANS)
- ⑯ STEEL PLATE BEAM GUARDRAIL, TYPE A, 6 FT POSTS
- ⑰ CLAY LINER, 8"

THE ADDITIONAL FABRIC REQUIRED FOR OVERLAP AREAS SHALL NOT BE PAID FOR SEPARATELY BUT SHALL BE INCLUDED IN THE COST OF GEOTECHNICAL FABRIC FOR GROUND STABILIZATION.

ITEMS ⑩ AND ⑪ WILL BE PAID FOR AS HOT-MIX ASPHALT PAVEMENT (FULL DEPTH) 11"

ITEM ⑥ AND ⑦ WILL BE PAID FOR AS HOT-MIX ASPHALT PAVEMENT (FULL DEPTH) 12 1/2"

| | | |
|-----------------------------|-------------------|-----------|
| FILE NAME | DESIGNED - AAF | REVISED - |
| ...D163598-shk-pr-tp-02.dgn | DRAWN - TMB | REVISED - |
| USER NAME - tblank | CHECKED - JMM | REVISED - |
| PLOT DATE - 1/17/2013 | DATE - 01/18/2013 | REVISED - |



STATE OF ILLINOIS
DIVISION OF TRANSPORTATION

PROPOSED TYPICAL SECTIONS
IL 25/STEARNS RD

SCALE: NTS SHEET NO. 6 OF 9 SHEETS STA. TO STA.

| F.A.P. RTE. | SECTION | COUNTY | TOTAL SHEETS | SHEET NO. |
|---------------------------|----------------|--------|--------------|--------------------|
| 361 | 06-00214-18-RP | KANE | 451 | 31 |
| | | | | CONTRACT NO. 63598 |
| ILLINOIS FED. AID PROJECT | | | | |