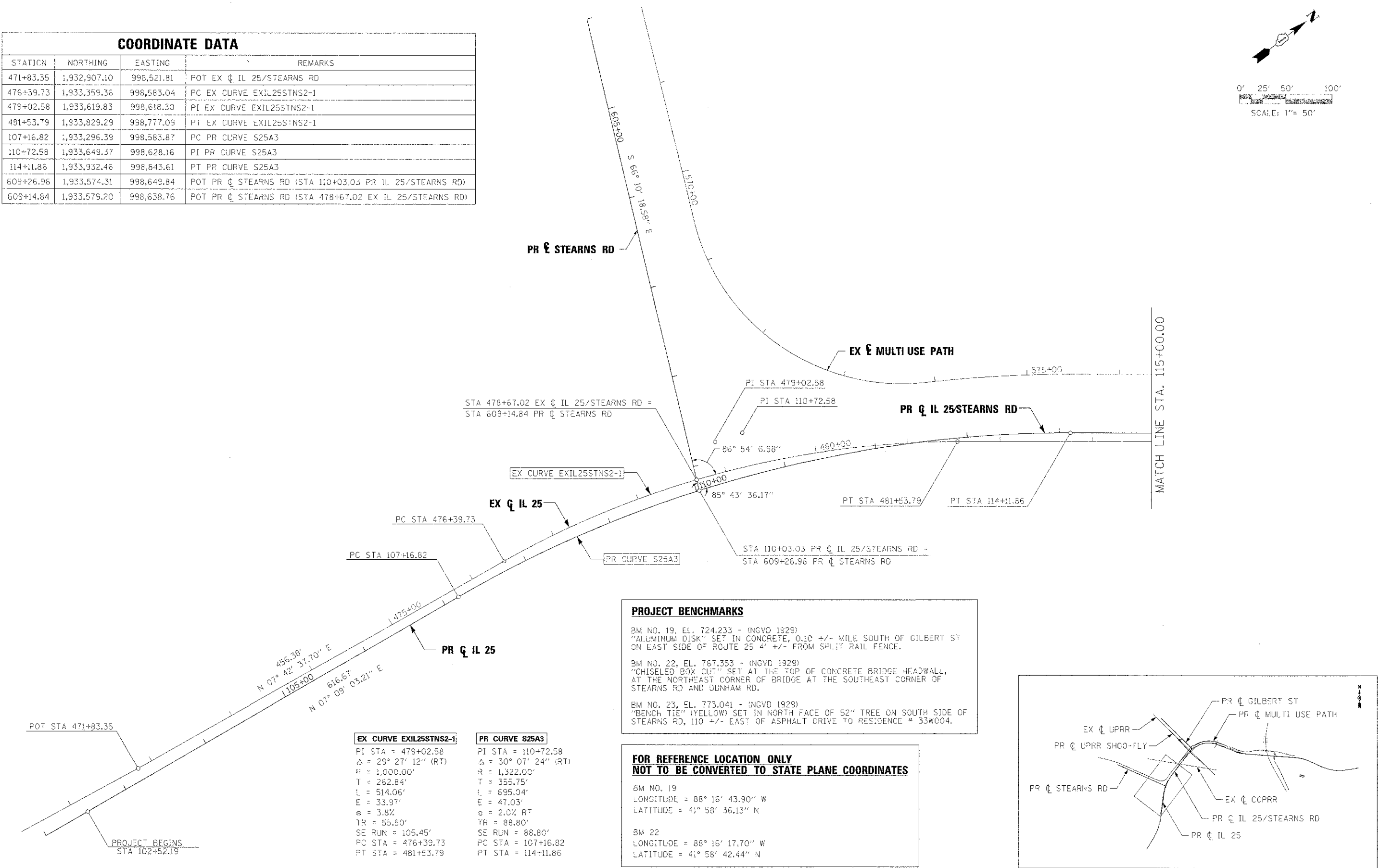
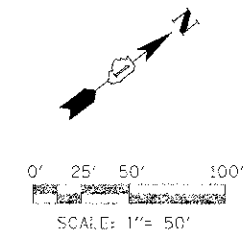


**COORDINATE DATA**

STATION	NORTHING	EASTING	REMARKS
471+83.35	1,932,907.10	998,521.81	POT EX $\phi$ IL 25/STEARNS RD
476+39.73	1,933,359.36	998,583.04	PC EX CURVE EXIL25STNS2-1
479+02.58	1,933,619.83	998,618.30	PI EX CURVE EXIL25STNS2-1
481+53.79	1,933,829.29	998,777.09	PT EX CURVE EXIL25STNS2-1
107+16.82	1,933,296.39	998,583.87	PC PR CURVE S25A3
110+72.58	1,933,649.37	998,628.16	PI PR CURVE S25A3
114+11.86	1,933,932.46	998,643.61	PT PR CURVE S25A3
609+26.96	1,933,574.31	998,648.84	POT PR $\phi$ STEARNS RD (STA 110+03.03 PR IL 25/STEARNS RD)
609+14.84	1,933,575.20	998,638.76	POT PR $\phi$ STEARNS RD (STA 478+67.02 EX IL 25/STEARNS RD)



**PROJECT BENCHMARKS**

BM NO. 19, EL. 724.233 - (NGVD 1929)  
 "ALUMINUM DISK" SET IN CONCRETE, 0.30 +/- MILE SOUTH OF GILBERT ST ON EAST SIDE OF ROUTE 25 4' +/- FROM SPLIT RAIL FENCE.

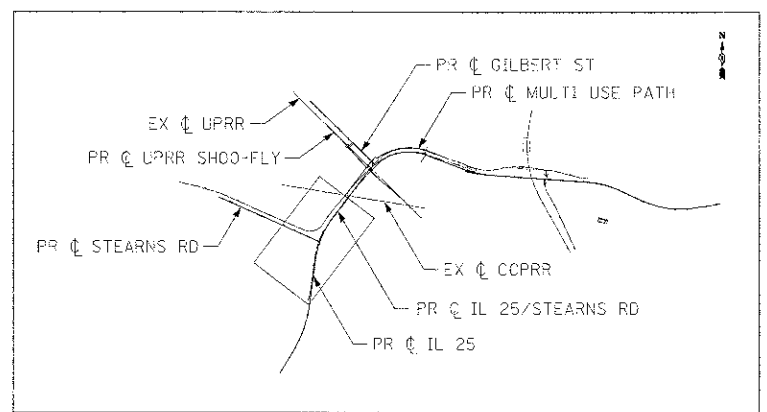
BM NO. 22, EL. 767.353 - (NGVD 1929)  
 "CHISELED BOX CUT" SET AT THE TOP OF CONCRETE BRIDGE HEADWALL, AT THE NORTHEAST CORNER OF BRIDGE AT THE SOUTHEAST CORNER OF STEARNS RD AND DUNHAM RD.

BM NO. 23, EL. 773.041 - (NGVD 1929)  
 "BENCH TIE" (YELLOW) SET IN NORTH FACE OF 52" TREE ON SOUTH SIDE OF STEARNS RD, 110 +/- EAST OF ASPHALT DRIVE TO RESIDENCE # 33W004.

**FOR REFERENCE LOCATION ONLY  
 NOT TO BE CONVERTED TO STATE PLANE COORDINATES**

BM NO. 19  
 LONGITUDE = 88° 16' 43.90" W  
 LATITUDE = 41° 58' 36.13" N

BM 22  
 LONGITUDE = 88° 16' 17.70" W  
 LATITUDE = 41° 58' 42.44" N



EX CURVE EXIL25STNS2-1	PR CURVE S25A3
PI STA = 479+02.58	PI STA = 110+72.58
$\Delta = 29^\circ 27' 12''$ (RT)	$\Delta = 30^\circ 07' 24''$ (RT)
R = 1,000.00'	R = 1,322.00'
T = 262.84'	T = 355.75'
L = 514.06'	L = 695.04'
E = 33.97'	E = 47.03'
e = 3.8%	e = 2.0% RT
TR = 55.50'	TR = 88.80'
SE RUN = 105.45'	SE RUN = 88.80'
PC STA = 476+39.73	PC STA = 107+16.82
PT STA = 481+53.79	PT STA = 114+11.86