

PR CURVE 3AMUPSTNS-21
 PI STA = 577+59.80
 $\Delta = 4^\circ 40' 10.65''$ (RT)
 R = 295.00'
 T = 12.03'
 L = 24.04'
 E = 0.25'
 e = N/A
 TR = N/A
 SE RUN = N/A
 PC STA = 577+47.77
 PT STA = 577+71.81

PR CURVE 3AMUPSTNS-23
 PI STA = 578+17.34
 $\Delta = 8^\circ 34' 00.02''$ (LT)
 R = 300.00'
 T = 22.47'
 L = 44.85'
 E = 0.64'
 e = N/A
 TR = N/A
 SE RUN = N/A
 PC STA = 577+94.87
 PT STA = 578+39.73

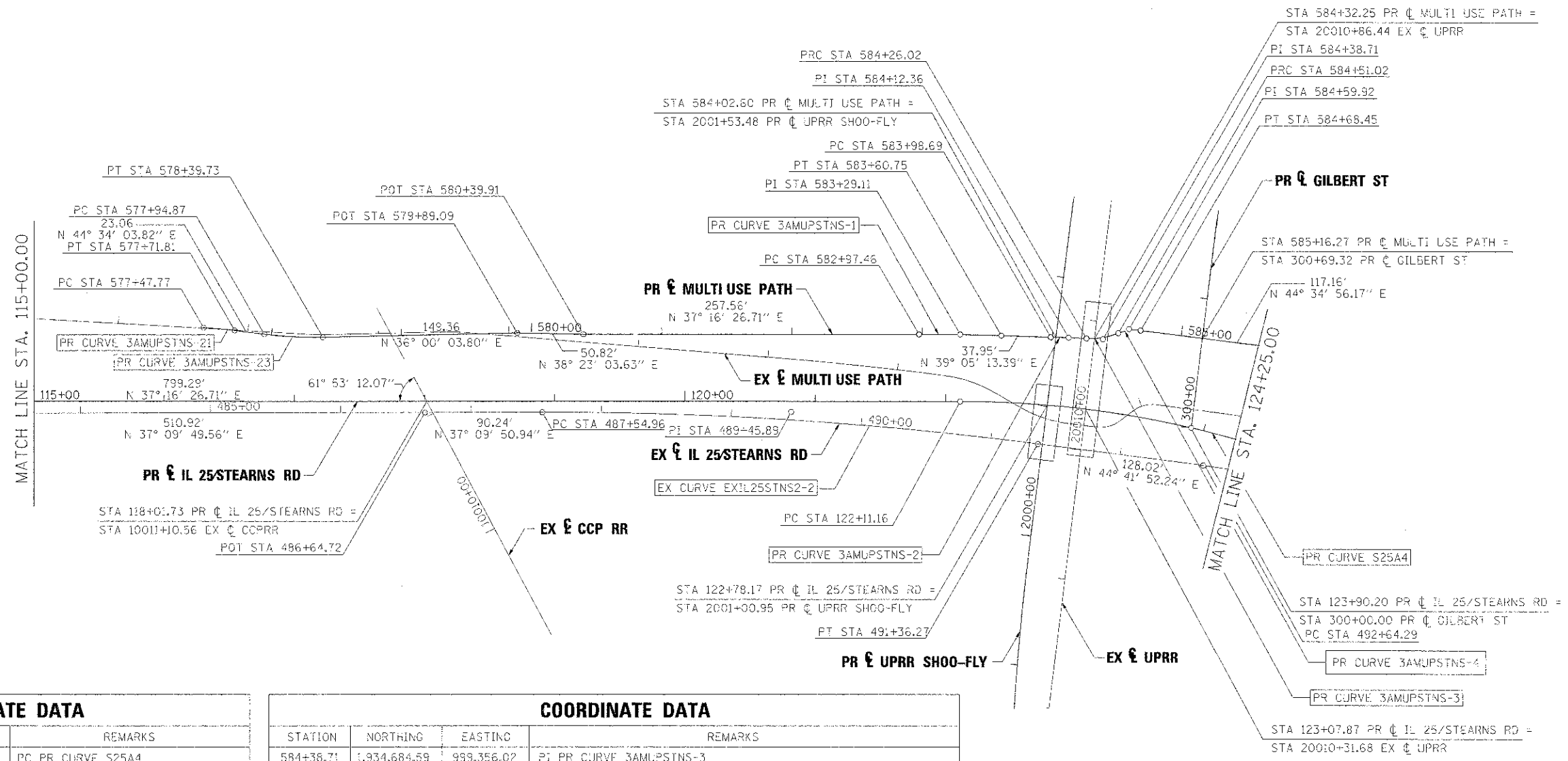
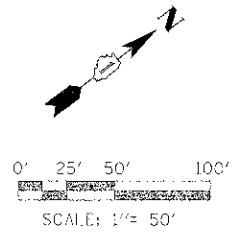
PR CURVE 3AMUPSTNS-1
 PI STA = 583+29.11
 $\Delta = 1^\circ 48' 46.68''$ (RT)
 R = 2,000.00'
 T = 31.64'
 L = 63.28'
 E = 0.25'
 e = N/A
 TR = N/A
 SE RUN = N/A
 PC STA = 582+97.46
 PT STA = 583+60.75

PR CURVE 3AMUPSTNS-2
 PI STA = 584+12.36
 $\Delta = 0^\circ 46' 58.90''$ (RT)
 R = 2,000.00'
 T = 13.67'
 L = 27.33'
 E = 0.05'
 e = N/A
 TR = N/A
 SE RUN = N/A
 PC STA = 583+98.69
 PRC STA = 584+26.02

PR CURVE 3AMUPSTNS-3
 PI STA = 584+38.71
 $\Delta = 23^\circ 48' 26.40''$ (LT)
 R = 60.17'
 T = 12.68'
 L = 25.00'
 E = 1.32'
 e = N/A
 TR = N/A
 SE RUN = N/A
 PRC STA = 584+26.02
 PRC STA = 584+51.02

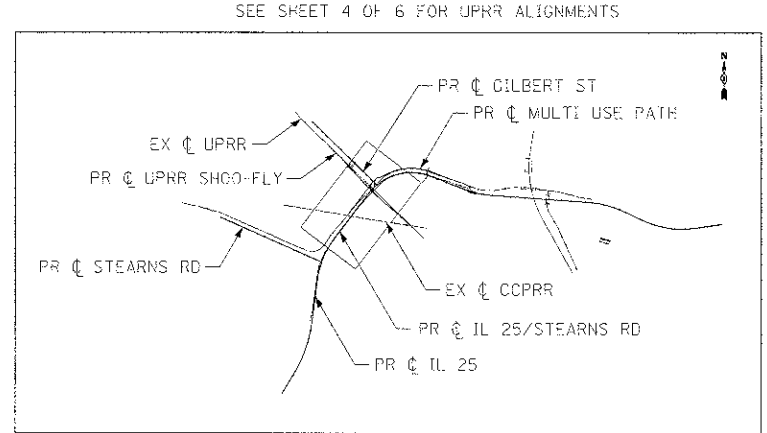
PR CURVE 3AMUPSTNS-4
 PI STA = 584+59.92
 $\Delta = 28^\circ 31' 11.27''$ (RT)
 R = 35.00'
 T = 8.90'
 L = 17.42'
 E = 1.11'
 e = N/A
 TR = N/A
 SE RUN = N/A
 PRC STA = 584+51.02
 PT STA = 584+68.45

EX CURVE EXIL25STNS2-2
 PI STA = 489+45.89
 $\Delta = 7^\circ 32' 01.29''$ (RT)
 R = 2900.00'
 T = 190.93'
 L = 381.31'
 E = 6.28'
 e = N/A
 TR = N/A
 SE RUN = N/A
 PC STA = 487+54.96
 PT STA = 491+36.27



| COORDINATE DATA | | | |
|-----------------|--------------|------------|--------------------------|
| STATION | NORTHING | EASTING | REMARKS |
| 122+11.16 | 1,934,568.50 | 999,327.69 | PC PR CURVE S25A4 |
| 577+47.77 | 1,934,140.53 | 998,930.82 | PC PR CURVE 3AMUPSTNS-21 |
| 577+59.80 | 1,934,149.75 | 998,938.54 | PI PR CURVE 3AMUPSTNS-21 |
| 577+71.81 | 1,934,158.32 | 998,946.98 | PT PR CURVE 3AMUPSTNS-21 |
| 577+94.87 | 1,934,174.75 | 998,963.16 | PC PR CURVE 3AMUPSTNS-23 |
| 578+17.34 | 1,934,190.76 | 998,978.93 | PI PR CURVE 3AMUPSTNS-23 |
| 578+39.73 | 1,934,208.94 | 998,992.14 | PT PR CURVE 3AMUPSTNS-23 |
| 579+89.09 | 1,934,329.77 | 999,079.93 | POT PR & MULTI USE PATH |
| 580+39.91 | 1,934,369.61 | 999,111.49 | POT PR & MULTI USE PATH |
| 582+97.46 | 1,934,574.56 | 999,267.47 | PC PR CURVE 3AMUPSTNS-1 |
| 583+29.11 | 1,934,599.74 | 999,286.64 | PI PR CURVE 3AMUPSTNS-1 |
| 583+60.75 | 1,934,624.30 | 999,306.59 | PT PR CURVE 3AMUPSTNS-1 |
| 583+98.69 | 1,934,653.76 | 999,330.52 | PC PR CURVE 3AMUPSTNS-2 |
| 584+12.36 | 1,934,664.37 | 999,339.13 | PI PR CURVE 3AMUPSTNS-2 |
| 584+26.02 | 1,934,674.85 | 999,347.89 | PRC PR CURVE 3AMUPSTNS-2 |

| COORDINATE DATA | | | |
|-----------------|--------------|------------|------------------------------------------------------------|
| STATION | NORTHING | EASTING | REMARKS |
| 584+38.71 | 1,934,684.59 | 999,356.02 | PI PR CURVE 3AMUPSTNS-3 |
| 584+51.02 | 1,934,696.78 | 999,359.53 | PRC PR CURVE 3AMUPSTNS-3 |
| 584+59.92 | 1,934,705.32 | 999,361.99 | PI PR CURVE 3AMUPSTNS-4 |
| 584+68.45 | 1,934,711.66 | 999,368.24 | PT PR CURVE 3AMUPSTNS-4 |
| 1001+0.56 | 1,934,242.70 | 999,079.73 | POT EX & CCPRR (STA 118+01.73 PR IL 25/STEARNS RD) |
| 2001+00.95 | 1,934,620.01 | 999,370.51 | POT PR & UPRR SHOO-FLY (STA 122+78.17 PR IL 25/STEARNS RD) |
| 2001+53.49 | 1,934,656.79 | 999,332.98 | POT PR & UPRR SHOO-FLY (STA 584+02.60 PR MULTI USE PATH) |
| 20010+31.68 | 1,934,641.63 | 999,390.87 | POT EX & UPRR (STA 123+07.87 PR IL 25/STEARNS RD) |
| 20010+86.44 | 1,934,679.83 | 999,351.63 | POT EX & UPRR (STA 584+32.25 PR MULTI USE PATH) |
| 300-00.00 | 1,934,697.33 | 999,451.45 | POT PR & GILBERT ST (STA 123+90.20 PR IL 25/STEARNS RD) |
| 300+69.32 | 1,934,745.72 | 999,401.81 | POT PR & GILBERT ST (STA 585+16.27 PR MULTI USE PATH) |
| 486+64.72 | 1,934,236.45 | 999,065.73 | POT EX & IL 25/STEARNS RD |
| 487+54.96 | 1,934,308.36 | 999,140.25 | PC EX CURVE EXIL25STNS2-2 |
| 489+45.89 | 1,934,460.52 | 999,255.59 | PI EX CURVE EXIL25STNS2-2 |
| 491+36.27 | 1,934,596.24 | 999,389.89 | PT EX CURVE EXIL25STNS2-2 |



| | | |
|----------------------------|-------------------|-----------|
| FILE NAME = | DESIGNED = AAP | REVISED = |
| ...N0163998-ans-478-02.dwg | DRAWN = TMB | REVISED = |
| USER NAME = tbenk | CHECKED = JMM | REVISED = |
| PLOT DATE = 12/11/2013 | DATE = 01/10/2013 | REVISED = |



STATE OF ILLINOIS
DIVISION OF TRANSPORTATION

| | |
|-----------------------------------------|-------------------------|
| ALIGNMENT, TIES & BENCHMARKS | |
| SCALE: 1"=50' | SHEET NO. 2 OF 6 SHEETS |
| STA. 115+00.00 TO STA. 124+25.00 | |

| | | | | |
|---------------------------|--------------------------|---------------|--------------------|----------------|
| F.A.P. RTE. = 361 | SECTION = 06-00214-16-RP | COUNTY = KANE | TOTAL SHEETS = 451 | SHEET NO. = 44 |
| CONTRACT NO. 63598 | | | | |
| ILLINOIS FED. AID PROJECT | | | | |