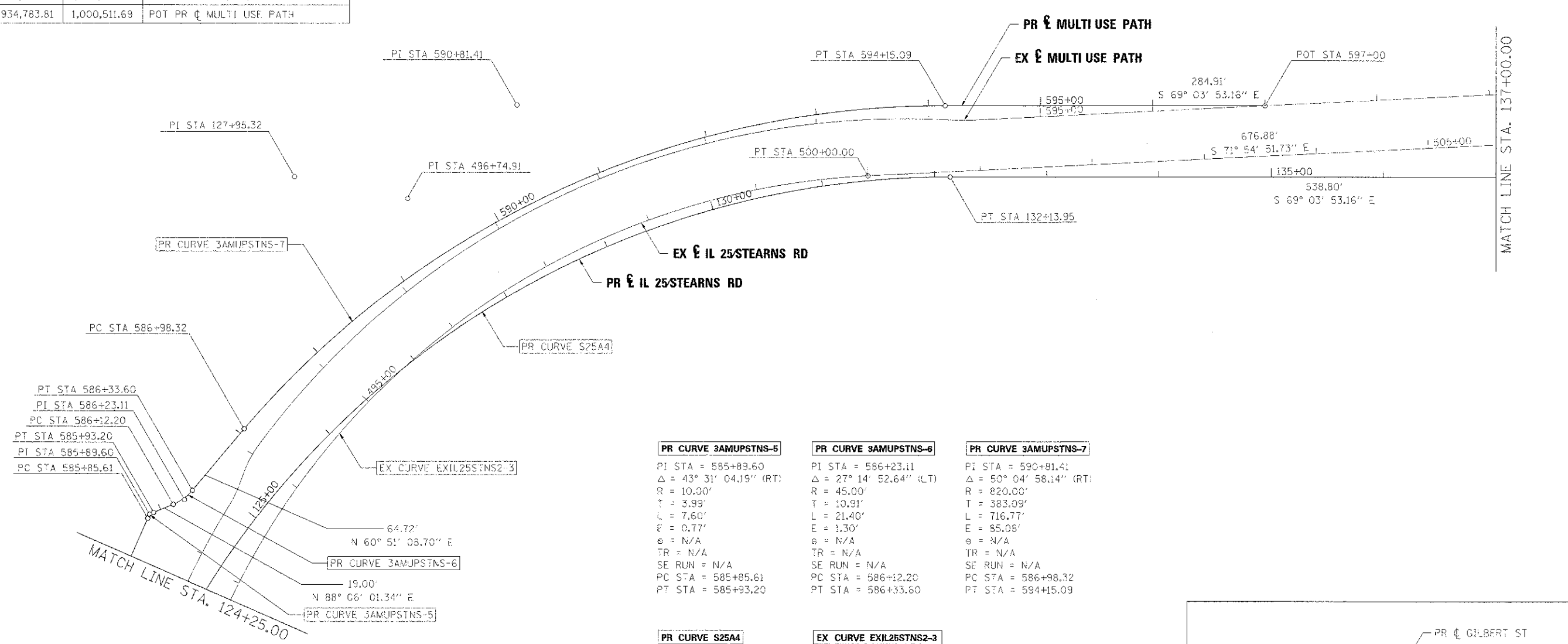
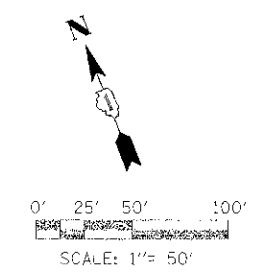


COORDINATE DATA			
STATION	NORTHING	EASTING	REMARKS
127+95.32	1,935,033.35	999,681.47	PI PR CURVE S25A4
132+13.95	1,934,824.62	1,000,227.07	PT PR CURVE S25A4
585+85.61	1,934,795.11	999,450.48	PC PR CURVE 3AMUPSTNS-5
585+89.60	1,934,797.95	999,453.28	PI PR CURVE 3AMUPSTNS-5
585+93.20	1,934,798.08	999,457.27	PT PR CURVE 3AMUPSTNS-5
586+12.20	1,934,798.71	999,476.26	PC PR CURVE 3AMUPSTNS-6
586+23.11	1,934,799.07	999,487.16	PI PR CURVE 3AMUPSTNS-6
586+33.60	1,934,804.39	999,496.68	PT PR CURVE 3AMUPSTNS-6
586+98.32	1,934,835.91	999,553.20	PC PR CURVE 3AMUPSTNS-7
590+81.41	1,935,022.50	999,887.79	PI PR CURVE 3AMUPSTNS-7
594+15.09	1,934,885.61	1,000,245.59	PT PR CURVE 3AMUPSTNS-7
597+00.00	1,934,783.81	1,000,511.69	POT PR CL MULTI USE PATH

COORDINATE DATA			
STATION	NORTHING	EASTING	REMARKS
492+64.29	1,934,687.24	999,479.93	PC EX CURVE EXIL25STNS2-3
496+74.91	1,934,979.11	999,768.74	PI EX CURVE EXIL25STNS2-3
500+00.00	1,934,851.64	1,000,159.07	PT EX CURVE EXIL25STNS2-3



PR CURVE 3AMUPSTNS-5	PR CURVE 3AMUPSTNS-6	PR CURVE 3AMUPSTNS-7
PI STA = 585+89.60	PI STA = 586+23.11	PI STA = 590+81.41
$\Delta = 43^\circ 31' 04.15''$ (RT)	$\Delta = 27^\circ 14' 52.64''$ (LT)	$\Delta = 50^\circ 04' 58.14''$ (RT)
R = 10.00'	R = 45.00'	R = 820.00'
T = 3.99'	T = 10.91'	T = 383.09'
L = 7.60'	L = 21.40'	L = 716.77'
E = 0.77'	E = 1.30'	E = 85.08'
e = N/A	e = N/A	e = N/A
TR = N/A	TR = N/A	TR = N/A
SE RUN = N/A	SE RUN = N/A	SE RUN = N/A
PC STA = 585+85.61	PC STA = 586+12.20	PC STA = 586+98.32
PT STA = 585+93.20	PT STA = 586+33.60	PT STA = 594+15.09

PR CURVE S25A4	EX CURVE EXIL25STNS2-3
PI STA = 127+95.32	PI STA = 496+74.91
$\Delta = 73^\circ 39' 40.14''$ (RT)	$\Delta = 63^\circ 23' 16.03''$ (RT)
R = 780.00'	R = 665.00'
T = 584.16'	T = 410.61'
L = 1002.79'	L = 735.71'
E = 194.50'	E = 116.56'
e = 2.0% RT	e = 6.0%
IN TR = 66.60'	TR = 66.60'
IN SE RUN = 88.80'	SE RUN = 199.80'
OUT TR = 88.80'	PC STA = 492+64.29
OUT SE RUN = 88.80'	PT STA = 500+00.00
PC STA = 122+13.95	
PT STA = 132+13.95	

