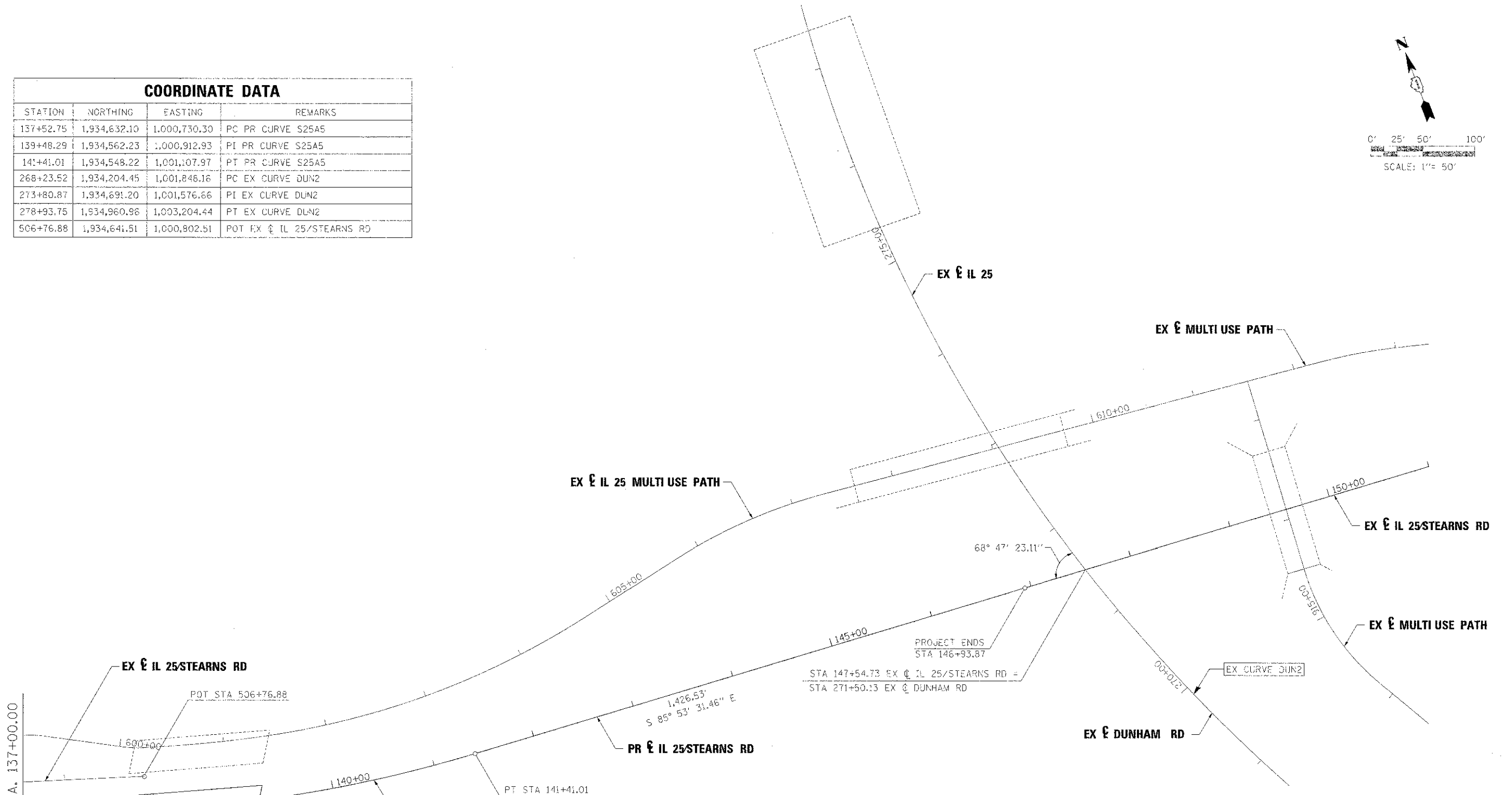
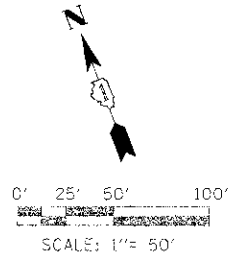
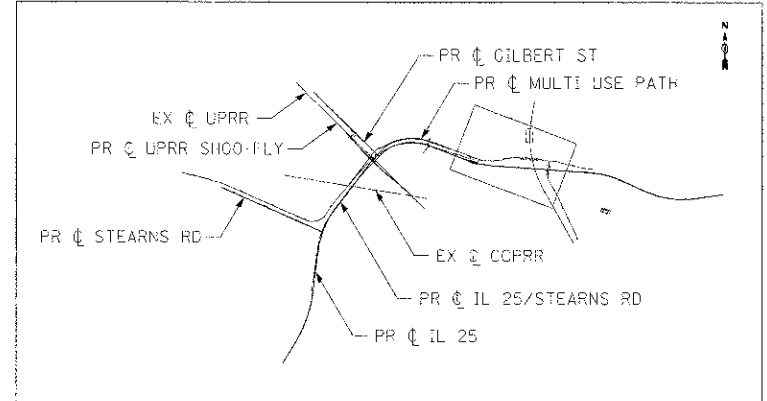


COORDINATE DATA			
STATION	NORTHING	EASTING	REMARKS
137+52.75	1,934,632.10	1,000,730.30	PC PR CURVE S25A5
139+48.29	1,934,562.23	1,000,912.93	PI PR CURVE S25A5
141+41.01	1,934,548.22	1,001,107.97	PT PR CURVE S25A5
268+23.52	1,934,204.45	1,001,846.16	PC EX CURVE DUN2
273+80.87	1,934,691.20	1,001,576.66	PI EX CURVE DUN2
278+93.75	1,934,960.96	1,003,204.44	PT EX CURVE DUN2
506+76.88	1,934,641.51	1,000,802.51	POT EX CL IL 25/STEARNS RD



**PR CURVE S25A5**  
 PI STA = 139+48.29  
 $\Delta = 16^\circ 49' 38.31''$  (LT)  
 R = 1,322.00'  
 T = 195.54'  
 L = 388.26'  
 E = 14.38'  
 $e = 3.5\%$  LT  
 TR = 88.80'  
 SE RUN = 155.40'  
 PC STA = 137+52.75  
 PT STA = 141+41.01

**EX CURVE DUN2**  
 PJ STA = 273+80.87  
 $\Delta = 39^\circ 29' 05''$  (RT)  
 D =  $3^\circ 41' 22''$   
 R = 1,553.00'  
 T = 557.35'  
 L = 1,070.23'  
 E = 96.98'  
 P.C. STA = 268+23.52  
 P.T. STA = 278+93.75



FILE NAME =	DESIGNED - AAF	REVISED -
...ND163598-sit-A76-04.dgn	DRAWN - TMB	REVISED -
USER NAME = stibark	CHECKED - JMM	REVISED -
PLOT DATE = 1/17/2013	DATE - 01/18/2013	REVISED -



STATE OF ILLINOIS  
 DIVISION OF TRANSPORTATION

ALIGNMENT, TIES & BENCHMARKS

SCALE: 1"=50' SHEET NO. 4 OF 6 SHEETS STA. 137+00.00 TO STA. 146+93.87

F.A.P. RTE.	SECTION	COUNTY	TOTAL SHEETS	SHEET NO.
361	06-00214-18-RP	KANE	451	46
CONTRACT NO. 63598			ILLINOIS FED. AID PROJECT	