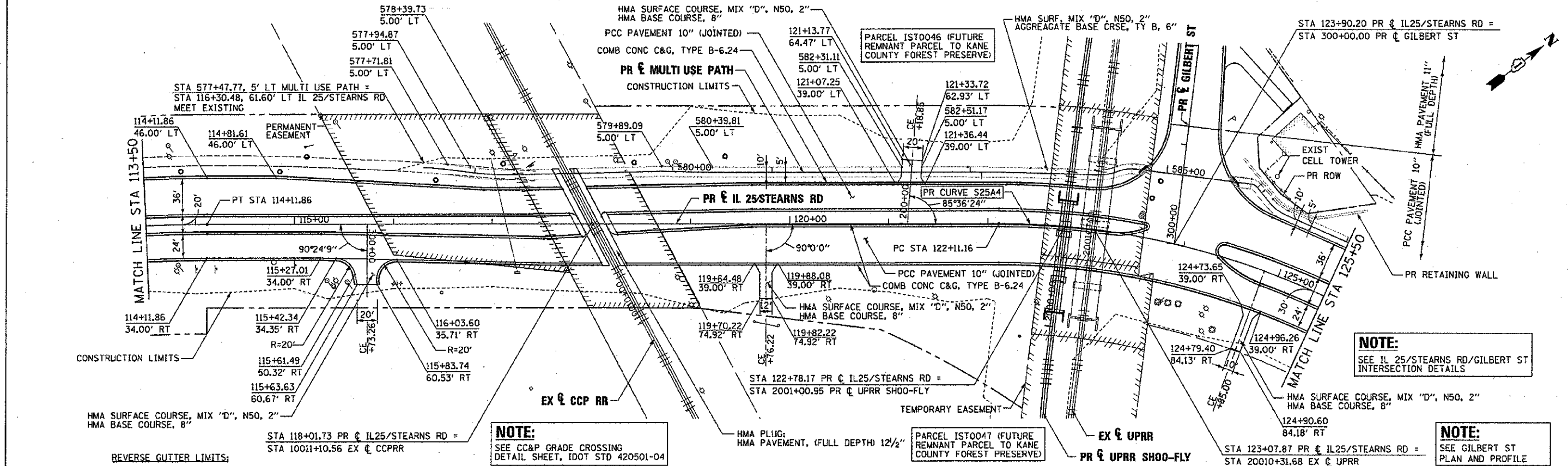


DATE	
BY	
DESIGNED	
DRAWN	
CHECKED	
DATE	
NO.	

DATE	
BY	
DESIGNED	
DRAWN	
CHECKED	
DATE	
NO.	



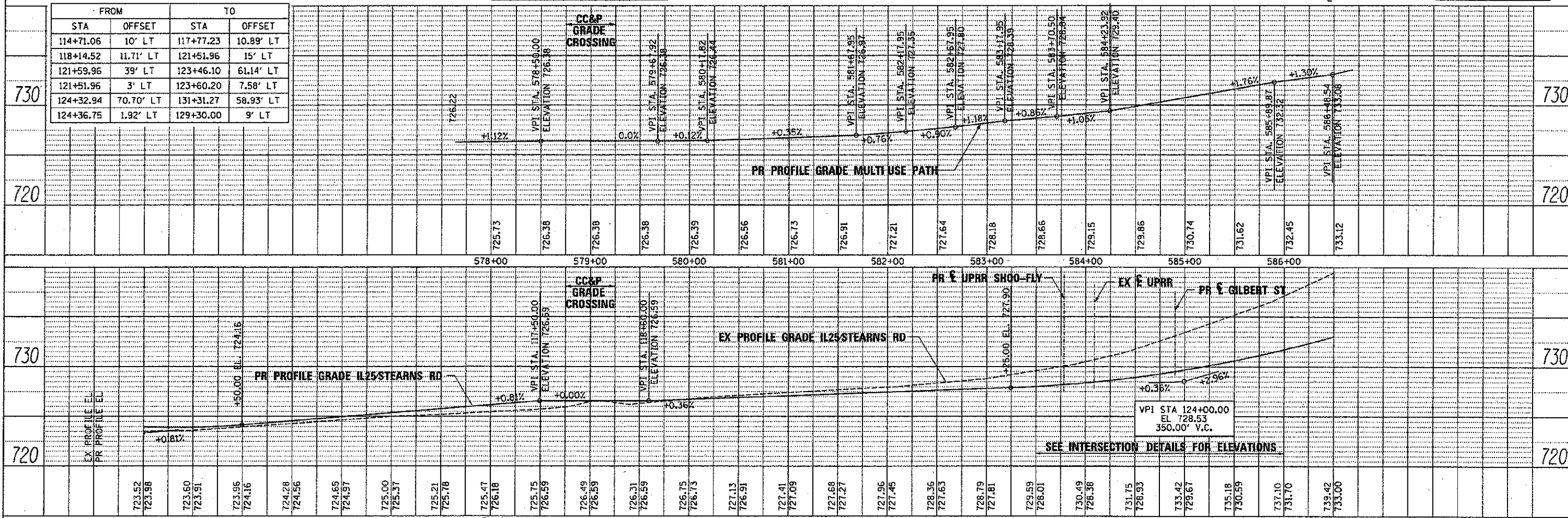
NOTE:
SEE IL 25/STEARNS RD/GILBERT ST INTERSECTION DETAILS

NOTE:
SEE CC&P GRADE CROSSING DETAIL SHEET, IDOT STD 420501-04

NOTE:
SEE GILBERT ST PLAN AND PROFILE

REVERSE GUTTER LIMITS:

FROM STA	OFFSET	TO STA	OFFSET
114+71.06	10' LT	117+77.23	10.89' LT
118+14.52	11.71' LT	121+51.96	15' LT
121+59.96	39' LT	123+46.10	61.14' LT
121+51.96	3' LT	123+60.20	7.58' LT
124+32.94	70.70' LT	131+31.27	58.93' LT
124+36.75	1.92' LT	129+30.00	9' LT



FILE NAME =	DESIGNED - AAA	REVISED -		STATE OF ILLINOIS DEPARTMENT OF TRANSPORTATION	PLAN AND PROFILE IL 25/STEARNS RD	F.A.P. RTE.	SECTION	COUNTY	TOTAL SHEETS	SHEET NO.
... \0163918-shc-il25-stn-pingf-02.dgn	DRAWN - TMB	REVISED -				361	06-00214-18-RP	KANE	451	55
USER NAME = tblank	CHECKED - JMM	REVISED -				CONTRACT NO. 63598				
PLOT DATE = 1/17/2013	DATE = 01/18/2013	REVISED -				ILLINOIS FED. AID PROJECT				

SCALE: 1"=50' SHEET NO. 2 OF 9 SHEETS STA. 113+50.00 TO STA. 125+50.00