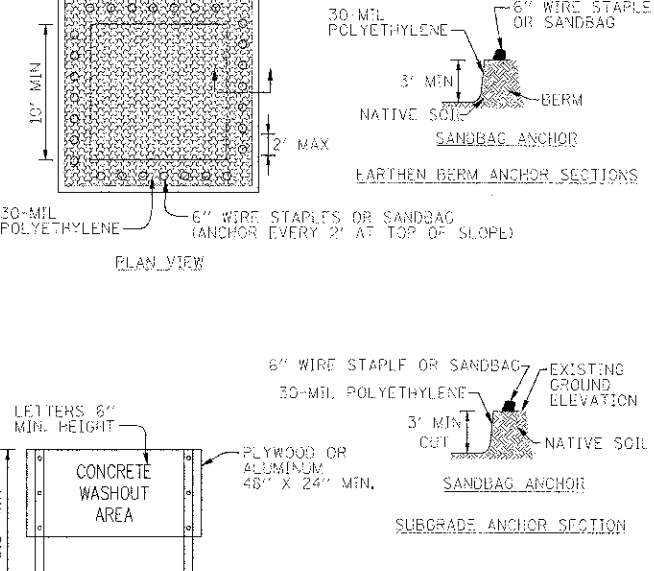
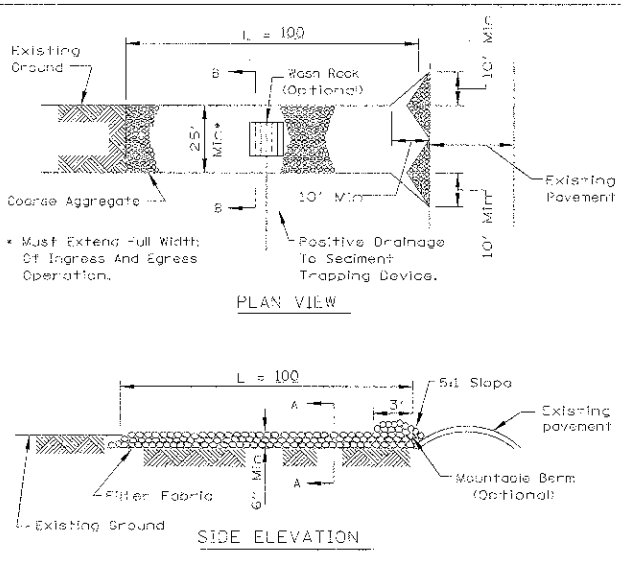
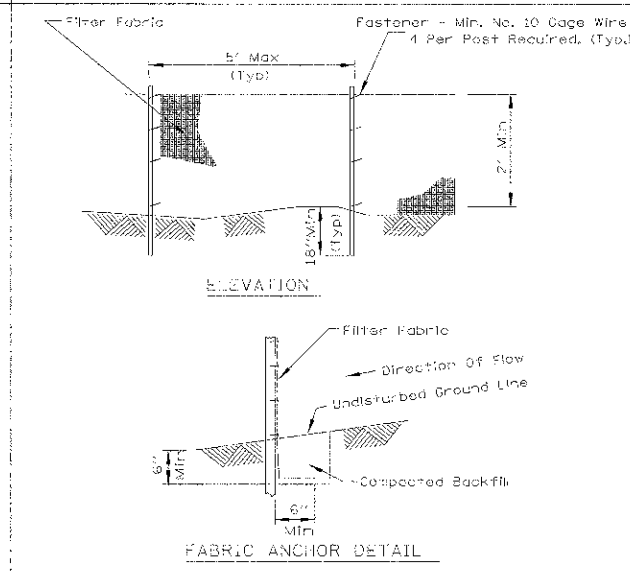
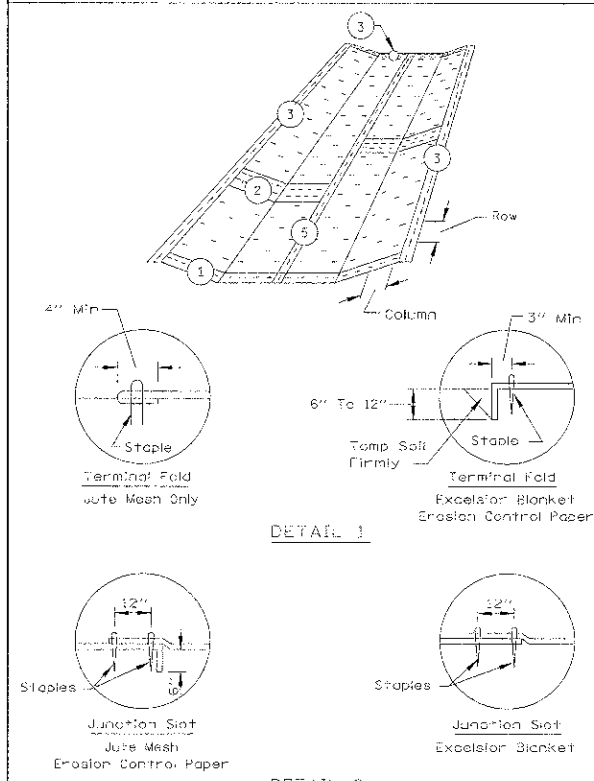


EROSION CONTROL BLANKET PLAN

PERIMETER EROSION BARRIER PLAN

STABILIZED CONSTRUCTION ENTRANCE PLAN

TEMPORARY CONCRETE WASHOUT FACILITY - EARTHEN TYPE



NOTES:

1. Temporary sediment fence shall be installed prior to any grading work in the area to be protected. They shall be maintained throughout the construction period and removed in conjunction with the final grading and site stabilization.
2. Filter fabric shall meet the requirements of material specification Article 1080.02.
3. Fence posts shall be either standard steel post or wood post with a minimum cross-sectional area of 3.0 sq. in.

NOTES:

1. Filter fabric shall meet the requirements of material specification Article 1080.03.
2. Rock or recycled concrete shall meet one of the following IDOT coarse aggregate gradation, #4-#2, #4-3 or #4-4 and be placed according to Article 281.4.
3. Any drainage facilities required because of washing shall be constructed according to manufacturer's specifications.
4. If wash racks are used they shall be installed according to the manufacturer's specifications.

NOTES:

1. MAINTAINING TEMPORARY CONCRETE WASHOUT FACILITIES SHALL INCLUDE REMOVING AND DISPOSING OF HARDENED CONCRETE AND/OR SLURRY AND RETURNING THE FACILITIES TO A FUNCTIONAL CONDITION.
2. FACILITY SHALL BE CLEANED OR RECONSTRUCTED IN A NEW AREA ONCE WASHOUT BECOMES TWO-THIRDS FULL.

REFERENCE PROJECT: NEW STEARNS ROAD	DESIGNED: MSK	DATE:	CHECKED: JWW	DATE:	APPROVED:	DATE:
STANDARD DWG. NO. IL-530			SHEET 1 OF 2			
NRCS			Natural Resources Conservation Service			

REFERENCE PROJECT: NEW STEARNS ROAD	DESIGNED: MSK	DATE:	CHECKED: JWW	DATE:	APPROVED:	DATE:
STANDARD DWG. NO. IL-620			SHEET 1 OF 2			
NRCS			Natural Resources Conservation Service			

REFERENCE PROJECT: NEW STEARNS ROAD	DESIGNED: MSK	DATE:	CHECKED: JWW	DATE:	APPROVED:	DATE:
STANDARD DWG. NO. IL-630			SHEET 1 OF 2			
NRCS			Natural Resources Conservation Service			

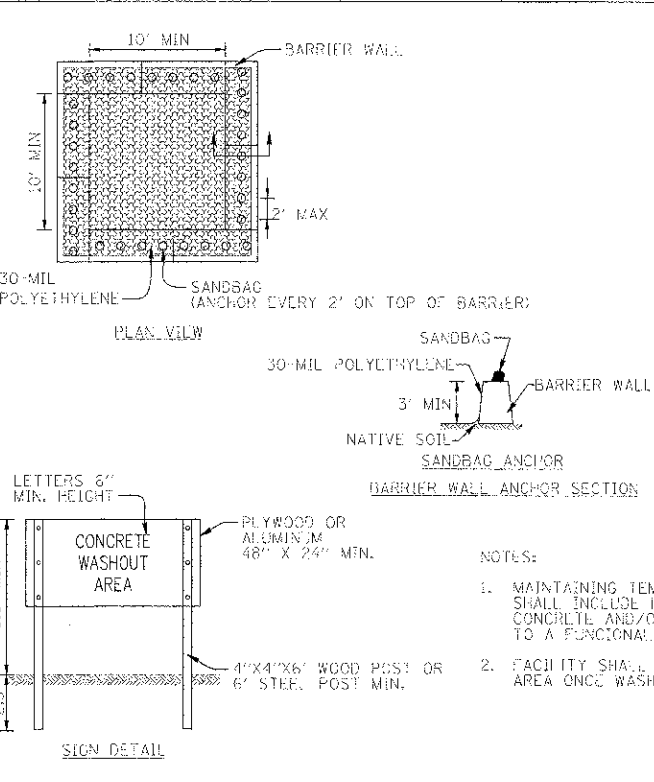
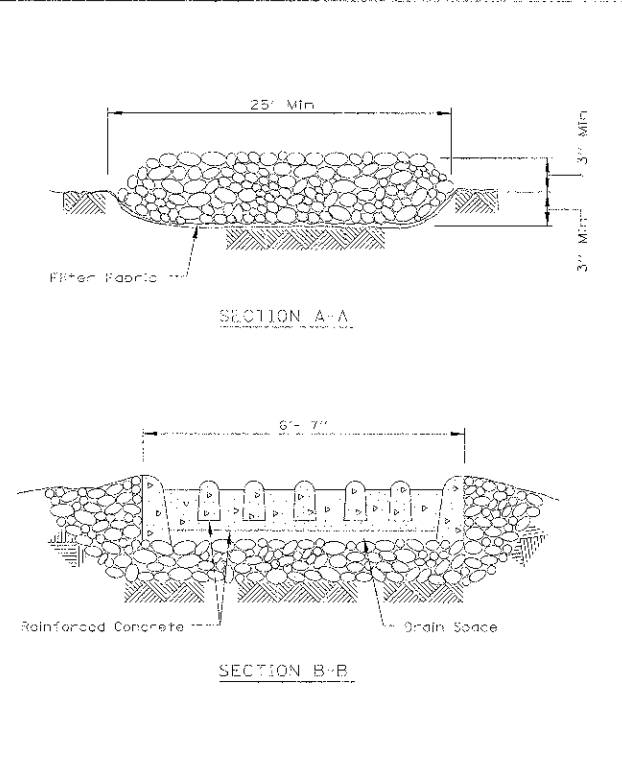
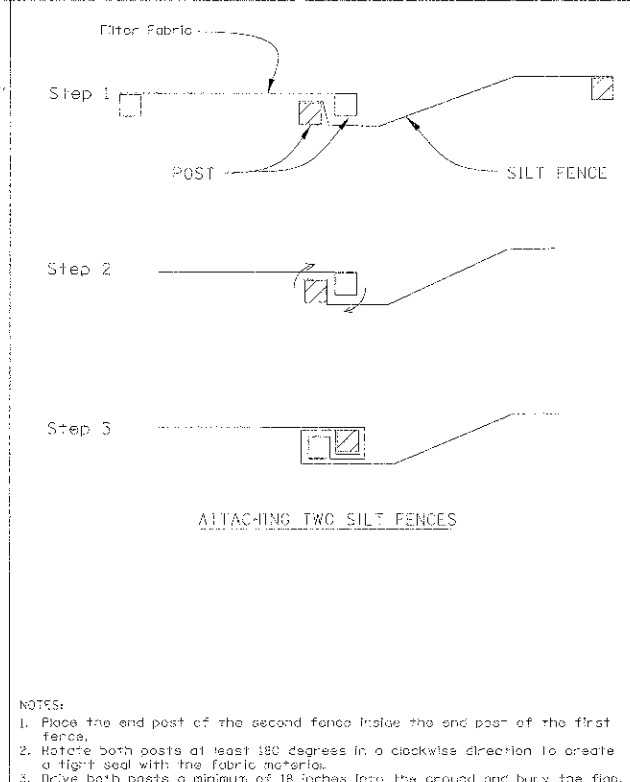
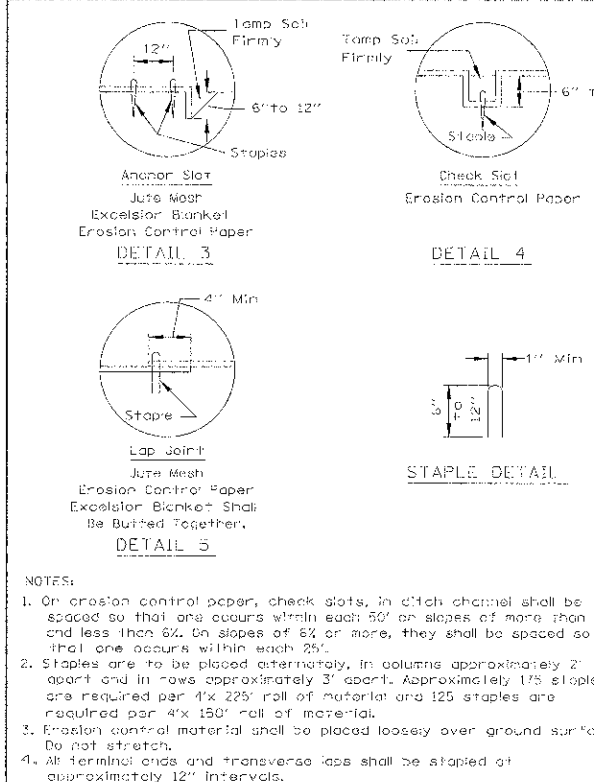
REFERENCE PROJECT: NEW STEARNS ROAD	DESIGNED: MSK	DATE:	CHECKED: JWW	DATE:	APPROVED:	DATE:
STANDARD DWG. NO. IL-630			SHEET 1 OF 2			
NRCS			Natural Resources Conservation Service			

EROSION CONTROL BLANKET PLAN

PERIMETER EROSION BARRIER

STABILIZED CONSTRUCTION ENTRANCE PLAN

TEMPORARY CONCRETE WASHOUT FACILITY - BARRIER WALL



NOTES:

1. Place the end post of the second fence inside the end post of the first fence.
2. Rotate both posts at least 180 degrees in a clockwise direction to create a tight seal with the fabric material.
3. Drive both posts a minimum of 18 inches into the ground and bury the flap.

NOTES:

1. MAINTAINING TEMPORARY CONCRETE WASHOUT FACILITIES SHALL INCLUDE REMOVING AND DISPOSING OF HARDENED CONCRETE AND/OR SLURRY AND RETURNING THE FACILITIES TO A FUNCTIONAL CONDITION.
2. FACILITY SHALL BE CLEANED OR RECONSTRUCTED IN A NEW AREA ONCE WASHOUT BECOMES TWO-THIRDS FULL.

REFERENCE PROJECT: NEW STEARNS ROAD	DESIGNED: MSK	DATE:	CHECKED: JWW	DATE:	APPROVED:	DATE:
STANDARD DWG. NO. IL-530			SHEET 2 OF 2			
NRCS			Natural Resources Conservation Service			

REFERENCE PROJECT: NEW STEARNS ROAD	DESIGNED: MSK	DATE:	CHECKED: JWW	DATE:	APPROVED:	DATE:
STANDARD DWG. NO. IL-620(W)			SHEET 2 OF 2			
NRCS			Natural Resources Conservation Service			

REFERENCE PROJECT: NEW STEARNS ROAD	DESIGNED: MSK	DATE:	CHECKED: JWW	DATE:	APPROVED:	DATE:
STANDARD DWG. NO. IL-630			SHEET 2 OF 2			
NRCS			Natural Resources Conservation Service			

REFERENCE PROJECT: NEW STEARNS ROAD	DESIGNED: MSK	DATE:	CHECKED: JWW	DATE:	APPROVED:	DATE:
STANDARD DWG. NO. IL-630			SHEET 2 OF 2			
NRCS			Natural Resources Conservation Service			

FILE NAME: \\163398-shl-us-GunNocus-Gat-22.dwg	DESIGNED: AAF	REVISED: -
USER NAME: wjw	CHECKED: JWW	REVISED: -
PLOT DATE: 1/17/2013	DATE: 01/18/2013	REVISED: -

DESIGNED: AAF	REVISED: -
CHECKED: JWW	REVISED: -
DATE: 01/18/2013	REVISED: -

STATE OF ILLINOIS	
DIVISION OF TRANSPORTATION	

TEMPORARY DRAINAGE & EROSION CONTROL	
GENERAL NOTES	
SCALE: N.T.S.	SHEET NO. 5 OF 21 SHEETS   STA. TO STA.

F.A.P. RTE. 361	SECTION 06-002(4)-18-RP	COUNTY KANE	TOTAL SHEETS 451	SHEET NO. 128
CONTRACT NO. 63598			ILLINOIS T&E PROJECT	

