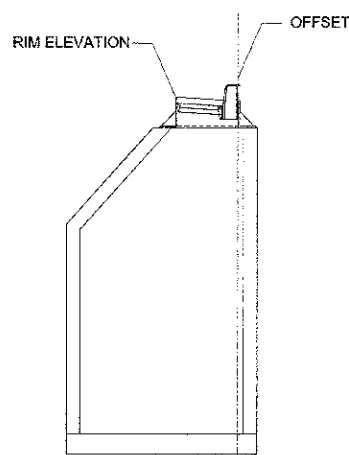
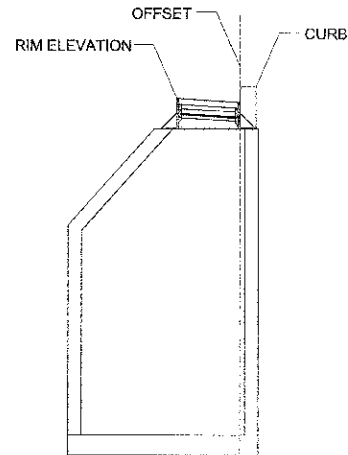


STORM SEWER STRUCTURE SCHEDULE (CONTINUED)

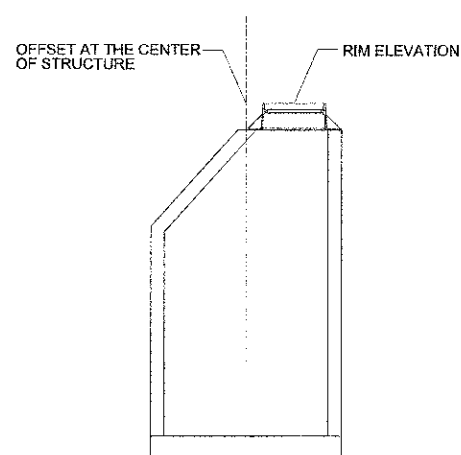
STRUCTURE ID	STATION	OFFSET	STRUCTURE TYPE	FRAME & GRATE / LID	ITEM NUMBER	STANDARD DRAWING	RIM / HEADWALL ELEV.	INVERTS												
								PIPE 1			PIPE 2			PIPE 3			PIPE 4			
								PIPE	INV.	DIR.	PIPE	INV.	DIR.	PIPE	INV.	DIR.	PIPE	INV.	DIR.	
S-130	111+80.00	45.0	R	MH TYPE A 4' DIA	F&L - TYPE 1 - CLOSED	60218400	602401-03 + 604001-03	725.00	P-131	717.47	S	P-130	717.47	W						
S-131	109+78.00	45.0	R	MH TYPE A 4' DIA	F&L - TYPE 1 - CLOSED	60218400	602401-03 + 604001-03	725.80	P-132	721.75	W	P-133	718.42	S	P-131	718.42	N			
S-132	109+78.00	36.0	R	CB TYPE A 4' DIA	F&G TYPE 24	60201340	602001-02 + 604091-02	726.10	P-132	721.78	E									
S-133	109+06.00	45.0	R	MH TYPE A 4' DIA	F&L - TYPE 1 - CLOSED	60218400	602401-03 + 604001-03	724.80	P-134	720.75	W	P-135	718.75	S	P-133	718.75	N			
S-134	109+06.00	36.0	R	CB TYPE A 4' DIA	F&G TYPE 24	60201340	602001-02 + 604091-02	725.43	P-134	720.76	E									
S-135	108+08.00	45.0	R	MH TYPE A 4' DIA	F&L - TYPE 1 - CLOSED	60218400	602401-03 + 604001-03	723.29	P-136	719.20	W	P-135	719.20	N						
S-136	108+08.00	36.0	R	CB TYPE A 4' DIA	F&G TYPE 24	60201340	602001-02 + 604091-02	724.01	P-137	719.30	W	P-136	719.30	E						
S-137	108+08.00	8.0	L	CB TYPE A 4' DIA	F&G TYPE 24	60201340	602001-02 + 604091-02	724.49	P-137	719.50	E									
S-138	118+00.00	37.4	L	CB TYPE A 4' DIA	F&G TYPE 24	60201340	602001-02 + 604091-02	726.11	P-138	722.10	E									
S-200	107+05.32	56.1	R	FLARED END SECTION - 12"		54213657	542301-03	718.30	P-202	718.20	W									
S-201	107+09.00	38.3	R	CB TYPE A 4' DIA	F&G TYPE 24	60201340	602001-02 + 604091-02	721.00	P-201	718.28	S									
S-202	106+97.50	45.7	R	CB TYPE A 5' DIA	F&G TYPE 24	60205040	602001-02 + 604091-02	720.92	P-204	718.25	W	P-204	718.25	N	P-204	718.25	S	P-202	718.25	E
S-203	106+88.39	56.2	R	CB TYPE A 4' DIA	F&G TYPE 24	60201340	602001-02 + 604091-02	722.31	P-203	718.28	N									
S-204	106+95.00	29.5	R	MH TYPE A 4' DIA	F&L - TYPE 1 - CLOSED	60218400	602401-03 + 604001-03	720.95	P-205	718.30	W	P-204	718.30	E						
S-205	106+96.00	8.0	L	CB TYPE A 4' DIA	F&G TYPE 24	60201340	602001-02 + 604091-02	721.71	P-205	718.44	E									
S-300	105+72.60	40.0	R	FLARED END SECTION - 12"		54213657	542301-03	714.40	P-301	714.40	N									
S-301	105+91.00	24.7	R	CB TYPE A 4' DIA	F&G TYPE 24	60201340	602001-02 + 604091-02	718.52	P-302	714.58	W	P-301	714.52	SE						
S-302	105+91.00	35.4	L	CB TYPE A 4' DIA	F&G TYPE 24	60201340	602001-02 + 604091-02	718.83	P-302	714.80	E									
S-400	103+83.87	19.9	R	FLARED END SECTION - 12"		54213657	542301-03	711.50	P-401	711.50	N									
S-401	103+91.00	13.0	R	MH TYPE A 6' DIA	F&L - TYPE 1 - CLOSED	60223800	602406-05 + 604001-03	717.20	P-403	712.66	NW	P-408	712.52	N	P-401	711.54	SE			
S-402	103+81.50	6.5	R	CB TYPE A 4' DIA	F&G TYPE 24	60201340	602001-02 + 604091-02	716.96	P-402	712.97	N									
S-403	103+96.50	7.4	R	CB TYPE A 6' DIA	F&G TYPE 24	60205310	602001-02 + 604091-02	716.93	P-402	712.68	S	P-406	712.68	W	P-404	712.89	N	P-403	712.89	SE
S-404	104+11.50	8.2	R	CB TYPE A 4' DIA	F&G TYPE 24	60201340	602001-02 + 604091-02	716.93	P-404	712.93	S									
S-405	103+81.50	32.2	L	CB TYPE A 4' DIA	F&G TYPE 24	60201340	602001-02 + 604091-02	716.95	P-405	712.95	N									
S-406	103+96.47	32.4	L	CB TYPE A 4' DIA	F&G TYPE 24	60201340	602001-02 + 604091-02	716.92	P-405	712.89	S	P-407	712.89	N	P-406	712.89	E			
S-407	104+11.50	32.6	L	CB TYPE A 4' DIA	F&G TYPE 24	60201340	602001-02 + 604091-02	716.93	P-407	712.93	S									
S-408	104+65.00	20.0	R	MH TYPE A 4' DIA	F&L - TYPE 1 - CLOSED	60218400	602401-03 + 604001-03	717.00	P-409	712.88	W	P-409	712.90	S						
S-409	104+65.00	12.9	R	CB TYPE A 4' DIA	F&G TYPE 24	60201340	602001-02 + 604091-02	717.07	P-410	712.92	W	P-409	712.90	E						
S-410	104+66.00	33.5	L	CB TYPE A 4' DIA	F&G TYPE 24	60201340	602001-02 + 604091-02	717.13	P-410	713.13	E									
S-500	145+49.72	44.8	L	CB TYPE A 4' DIA	F&G TYPE 24	60201340	602001-02 + 604091-02	758.30	S-500A	750.67	S	P-500	750.67	N						
S-501	144+40.07	62.2	L	CB TYPE A 4' DIA	F&G TYPE 24	60201340	602001-02 + 604091-02	751.64	S-501A	749.18	S	P-501	749.18	N						
S-502	143+50.00	60.6	L	CB TYPE A 4' DIA	F&G TYPE 24	60201340	602001-02 + 604091-02	751.58	S-502A	745.77	S	P-502	745.77	N						
S-503	142+50.00	52.3	R	CB TYPE A 4' DIA	F&G TYPE 24	60201340	602001-02 + 604091-02	752.50	P-503	748.65	E									
S-504	142+49.86	56.4	L	CB TYPE A 4' DIA	F&G TYPE 24	60201340	602001-02 + 604091-02	751.68	S-504A	746.52	S	P-504	746.52	N						
S-505	141+75.00	53.3	L	CB TYPE A 4' DIA	F&G TYPE 24	60201340	602001-02 + 604091-02	750.68	P-506	746.77	S	P-505	744.40	N						
S-506	141+74.97	5.8	L	CB TYPE A 4' DIA	F&G TYPE 24	60201340	602001-02 + 604091-02	751.14	P-506	747.20	N									
S-507	140+97.00	53.0	L	CB TYPE A 4' DIA	F&G TYPE 24	60201340	602001-02 + 604091-02	749.13	P-508	745.69	S	P-507	742.50	N						
S-508	140+98.99	0.3	L	CB TYPE A 4' DIA	F&G TYPE 24	60201340	602001-02 + 604091-02	749.93	P-508	745.93	N									
S-509	139+56.82			CB TYPE A 4' DIA	GRATE TYPE 8	60200805	602001-02 + 604036-02	746.30	P-511	744.40	S	P-509	744.40	N						
S-510	139+41.78	12.9	R	CB TYPE A 4' DIA	F&G TYPE 24	60201340	602001-02 + 604091-02	749.37	P-510	744.61	E									
S-511	139+56.78	11.7	R	CB TYPE A 4' DIA	F&G TYPE 24	60201340	602001-02 + 604091-02	749.31	P-510	744.50	W	P-512	744.50	E	P-511	744.47	N			
S-512	139+71.78	10.5	R	CB TYPE A 4' DIA	F&G TYPE 24	60201340	602001-02 + 604091-02	748.28	P-512	744.61	W									



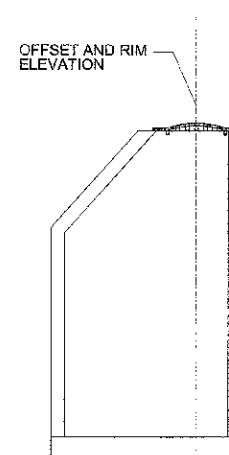
DETAIL A
FRAME AND GRATE TYPE 3, 11



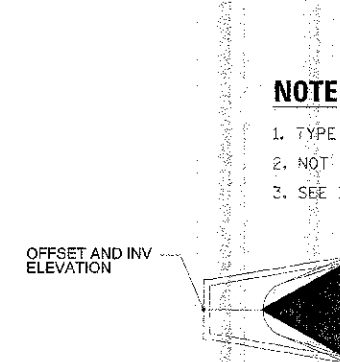
DETAIL B
FRAME AND GRATE TYPE 24



DETAIL C
FRAME AND LID TYPE 1 - CLOSED



DETAIL D
FRAME AND GRATE TYPE 8



DETAIL E
FLARED END SECTION

NOTE

1. TYPE OF STRUCTURE MAY VARY
2. NOT TO SCALE
3. SEE IDOT HIGHWAY STANDARD DETAILS

FILE NAME -	DESIGNED - AAF	REVISED -
...NUG2898 shi dra m zeh 03.dgn	DRAWN - THG	REVISED -
USER NAME - tblank	CHECKED - MM	REVISED -
PLT DATE - 2/26/2013	DATE - 01/18/2013	REVISED -



STATE OF ILLINOIS
DIVISION OF TRANSPORTATION

DRAINAGE SCHEDULE

SCALE: NTS SHEET NO. 3 OF 10 SHEETS STA. TO STA.

P.A.P. NO. 1361	SECTION 06-00214-18-RF	COUNTY KANE	TOTAL SHEETS 451	SHEET NO. 147
			CONTRACT NO. 63598	

ILLINOIS FED. AID PROJECT