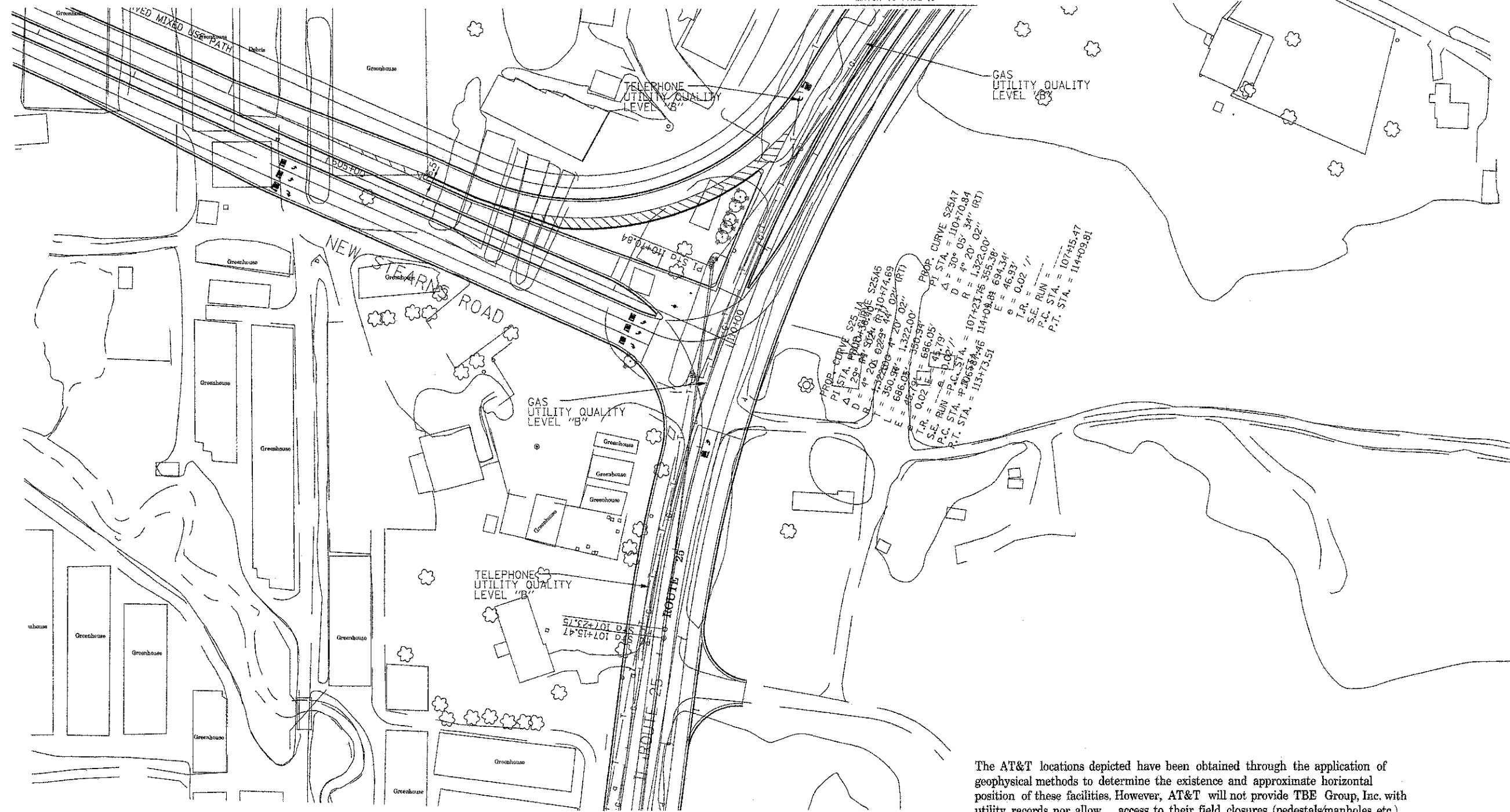
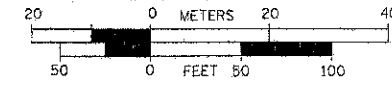




MATCH TO PAGE 13



The AT&T locations depicted have been obtained through the application of geophysical methods to determine the existence and approximate horizontal position of these facilities. However, AT&T will not provide TBE Group, Inc. with utility records nor allow access to their field closures (pedestals/manholes etc.), to help verify the locations of their existing underground facilities. Therefore, TBE is unable to verify the completeness of the AT&T locations depicted in accordance with the CI/ASCE Standard 38-02.



205 W. WACKER DRIVE
SUITE 1020
CHICAGO, IL 60606
(312) 704-1970

—●—●—●—●—	FORCE MAIN
—●—●—●—●—	CABLE TV
—T—T—T—T—	TELEPHONE
—G—G—G—G—	GAS
—E—E—E—E—	ELECTRIC
—W—W—W—W—	WATER
—FO—FO—FO—FO—	FIBER OPTIC
—●—●—●—●—	TBE TEST HOLE

Utilities shown in color on these plans as depicted in the legend have been investigated by TBE Group, Inc in accordance with SUE Industry Standards. All other information shown has been provided to TBE Group, Inc by others. TBE's SUE field investigation was performed from 3/24/08 to 6/13/08. Changes to utilities after this date may have been made and therefore may result in variances from this plan. Consideration should be given to updating this plan if deemed advisable prior to final design and construction.

- Utility Quality Level "A" : Test Hole
- Utility Quality Level "B" : Designating
- Utility Quality Level "C" : Research with Survey
- Utility Quality Level "D" : Records Research

TBE GROUP, INC.
CIVIL ENGINEERING • TRANSPORTATION • ENVIRONMENTAL
PLANNING • UTILITY ENGINEERING/LOCATING

Checked By: *[Signature]*
Date: 1-08-09

TBE Job No. IL09500274,
284, 285, 286, 288
SUE Plan Page: 12 of 21

FILE NAME =	USER NAME =	DESIGNED EG, JP, SW	REVISED
#FILES =		DRAWN KLC	REVISED
	PLOT SCALE =	CHECKED RLC	REVISED
	PLOT DATE = #DATE#	DATE 6/16/08	REVISED

STATE OF ILLINOIS
DEPARTMENT OF TRANSPORTATION
AND KANE COUNTY HIGHWAY DEPT.

STEARNS ROAD CORRIDOR

SCALE:	SHEET NO.	STA.	TO STA.
--------	-----------	------	---------

F.A.P. RTE.	SECTION	COUNTY	TOTAL SHEETS	SHEET NO.
361	06-00214-18-RP	KANE/DuPAGE	451	158
CONTRACT NO.			63598	