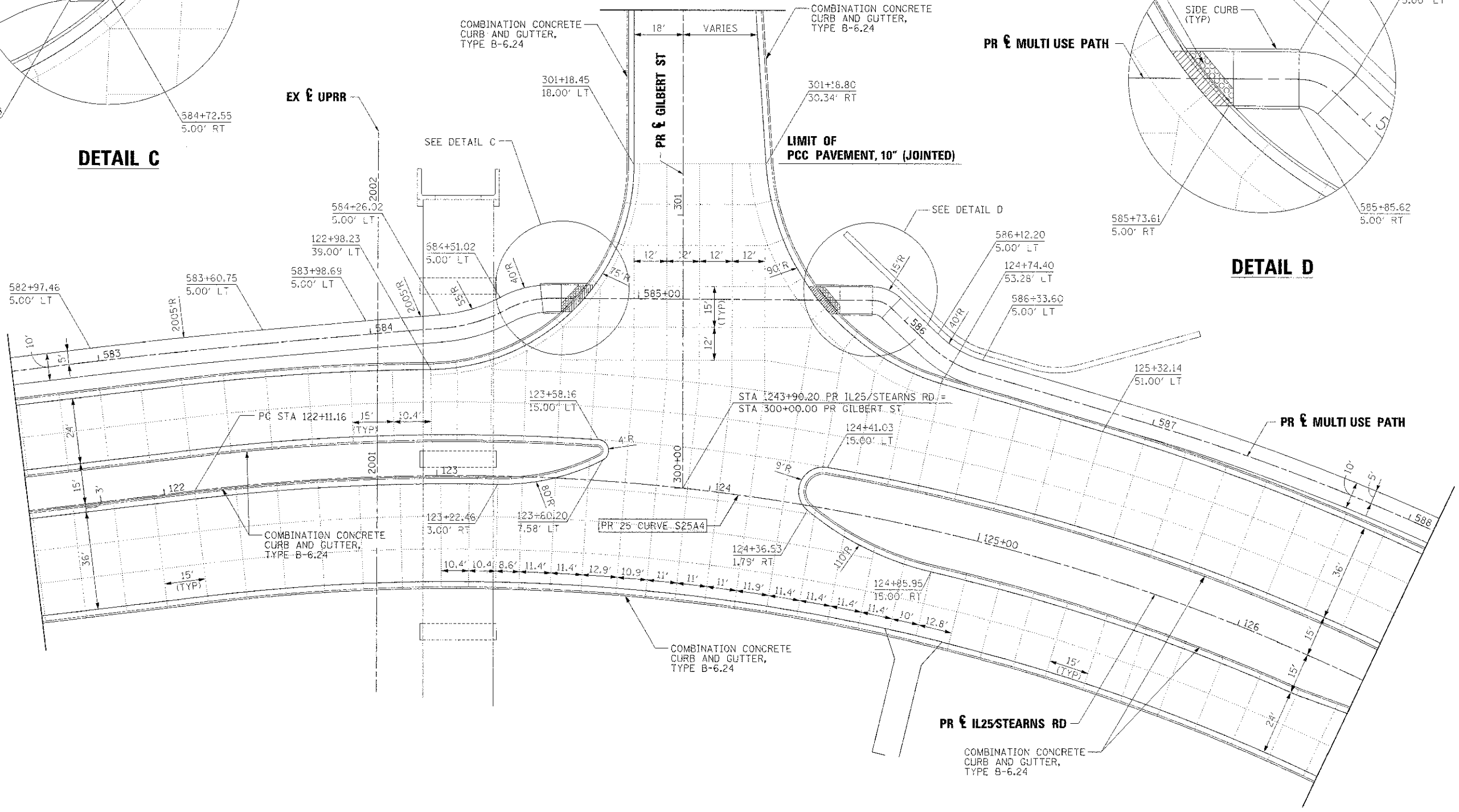
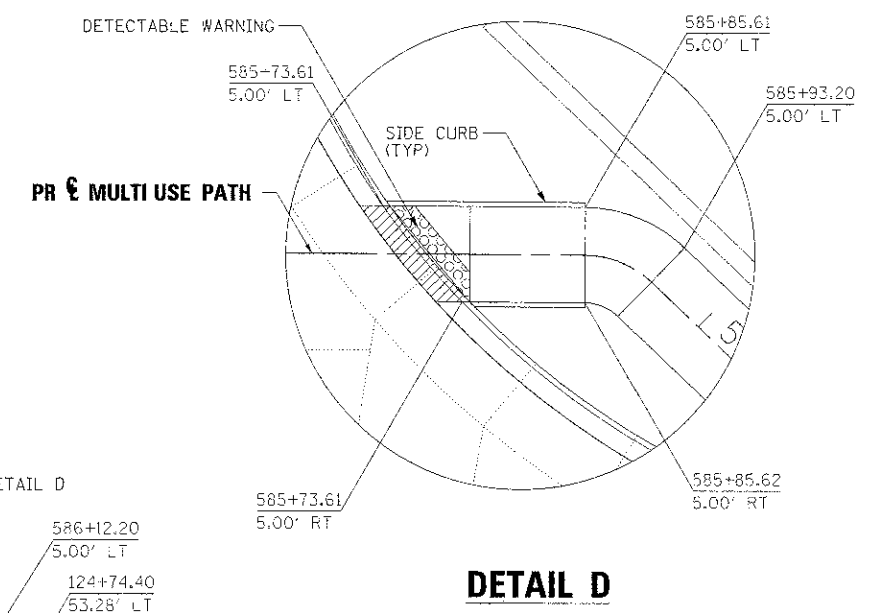
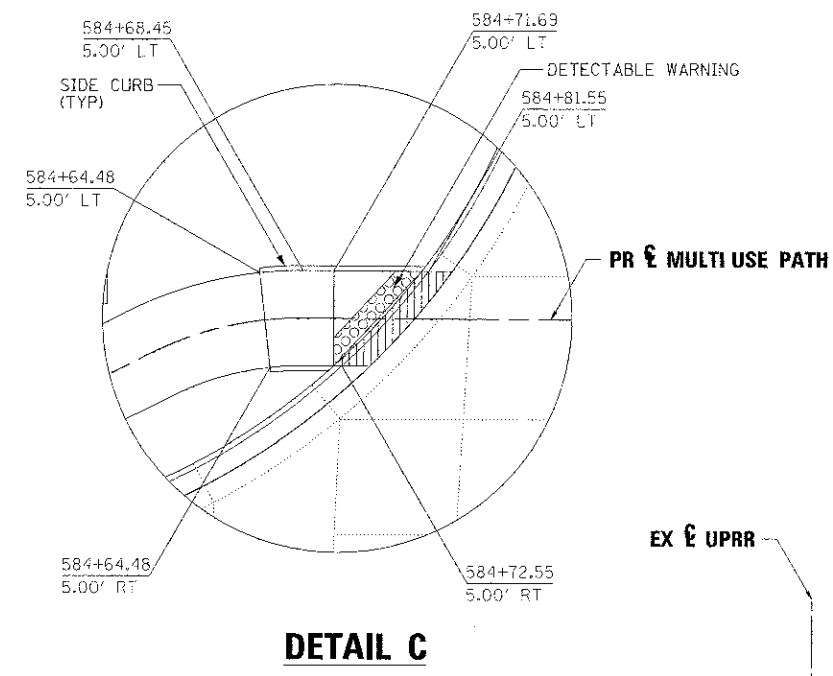


NOTES:
 1. SEPERATION JOINT WITH SLEEPER SLAB SHALL BE CONSTRUCTED IN ACCORDANCE WITH IDOT DISTRICT 1 DETAIL DD-52.
 2. SEE HIGHWAY STANDARDS 420101 AND 420106 FOR SPACING OF TRANSVERSE JOINTS.



FILE NAME =	DESIGNED - AAF	REVISED -
...NOE:K988-shc-intersecting.dwg	DRAWN - TMS	REVISED -
USER NAME = tblank	CHECKED - JMM	REVISED -
PLOT DATE = 1/17/2013	DATE - 01/18/2013	REVISED -



**STATE OF ILLINOIS
 DIVISION OF TRANSPORTATION**

**INTERSECTION DETAILS
 IL 25/STEARNS RD/GILBERT ST**
 SCALE: 1"=20' SHEET NO. 5 OF 9 SHEETS STA. TO STA.

F.A.P. RTE. 361	SECTION 06-00214-18-PP	COUNTY KANE	TOTAL SHEETS 451	SHEET NO. 195
CONTRACT NO. 63598				ILLINOIS FED. AID PROJECT