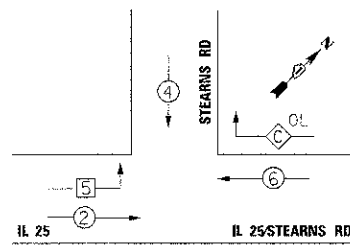


TEMPORARY CONTROLLER SEQUENCE



TEMPORARY PHASE DESIGNATION DIAGRAM STAGE 2-4

TEMPORARY EMERGENCY VEHICLE PREEMPTION SEQUENCE



LEGEND

- ← ⊙ → DUAL ENTRY PHASE
- * NUMBER REFERS TO ASSOCIATED PHASE
- ← ⊙ → OVERLAP
- ← ⊙ → FREE-FLOW RIGHT TURN MOVEMENT TO BE ACTIVATED IN STAGE 1A-2 AND REMAIN ACTIVE THROUGH END OF PROJECT
- ← ⊙ → SINGLE ENTRY PHASE

NOTE:
THE TEMPORARY TRAFFIC SIGNAL CONTROLLER EQUIPMENT FOR THIS PROJECT SHALL BE "SIEMENS (EAGLE)" TO MATCH THE EXISTING ADJACENT SYSTEM.

TEMPORARY EMERGENCY VEHICLE PREEMPTORS STAGE 2-4			
EMERGENCY VEHICLE PREEMPTOR	3	4	5
MOVEMENT	→	←	↓

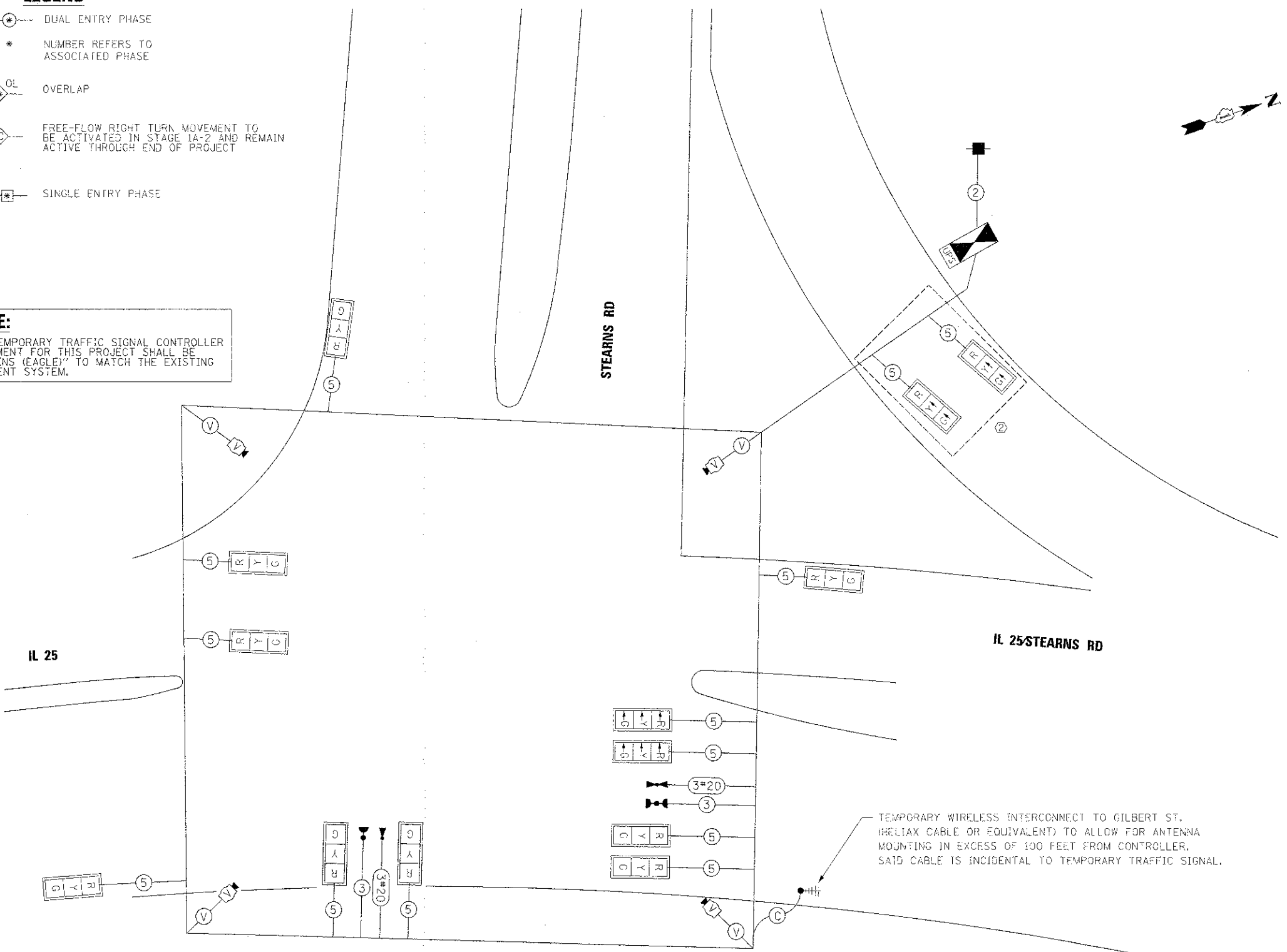
CONSTRUCTION NOTES:

- ① THE CONTRACTOR SHALL MAINTAIN THE EXISTING SIGNAL SYSTEM INTERCONNECT DURING TEMPORARY SIGNAL OPERATION.
- ② FREE-FLOW RIGHT TURN LANE TRAFFIC SIGNAL HEAD TO BE ACTIVATED IN STAGE 1A-2 AND REMAIN THROUGH END OF CONTRACT.

I.D.O.T TRAFFIC SIGNAL INSTALLATION ELECTRICAL SERVICE REQUIREMENTS					
TYPE	NO. LAMPS	WATTAGE		%OPERATION	TOTAL WATTAGE
		INCAND.	LED		
SIGNAL (RED)	11	-	17	0.50	93.50
(YELLOW)	11	-	25	0.25	68.75
(GREEN)	11	-	15	0.25	41.25
ARROW	-	-	12	0.10	-
PED. SIGNAL	-	-	25	1.00	-
CONTROLLER	1	-	100	1.00	100.00
FREE-FLOW ARROW	2	-	15	1.00	30.00
VIDEO SYSTEM	1	150	-	1.00	150.00
FLASHER				0.50	

ENERGY COSTS TO: TOTAL = 483.50

ILLINOIS DEPARTMENT OF TRANSPORTATION
DIVISION OF HIGHWAY/DISTRICT 1
201 WEST CENTER COURT/SCHAUMBURG, ILLINOIS 60196-1096
ENERGY SUPPLY CONTACT: MARTY RUBIN
PHONE: (847) 608 2400
COMPANY: COMED



TEMPORARY CABLE PLAN

TEMPORARY WIRELESS INTERCONNECT TO GILBERT ST. (RELIAX CABLE OR EQUIVALENT) TO ALLOW FOR ANTENNA MOUNTING IN EXCESS OF 100 FEET FROM CONTROLLER. SAID CABLE IS INCIDENTAL TO TEMPORARY TRAFFIC SIGNAL.

FILE NAME =	DESIGNED - BC	REVISED -
...N1639P8-d14-IL 25+trn+comp+tr+cable+stage	DRAWN - TMB	REVISED -
USER NAME =	CHECKED - MPM	REVISED -
PLOT DATE = 1/16/2013	DATE = 01/18/2013	REVISED -



STATE OF ILLINOIS
DIVISION OF TRANSPORTATION

TEMP CABLE PLAN & TEMP PHASE DESIGNATION DIAGRAM, & TEMP EMERGENCY VEHICLE PREEMPTION SEQUENCE, IL 25/STEARNS RD AT STEARNS RD, STAGE 2-4
SCALE: 1"=20' SHEET NO. 13 OF 49 SHEETS STA. TO STA.

F.A.P. RTE. 361	SECTION 06-0C214-18-RP	COUNTY KANE	TOTAL SHEETS 451	SHEET NO. 224
CONTRACT NO. 63598				ILLINOIS FED. AID PROJECT