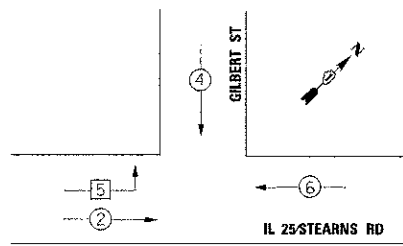


TEMPORARY CONTROLLER SEQUENCE



LEGEND

- ← ⊙ → DUAL ENTRY PHASE
- NUMBER REFERS TO ASSOCIATED PHASE
- ← ⊠ → PROTECTED LEFT TURN PHASE

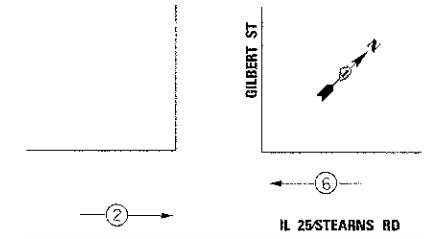
NOTE:

THE TEMPORARY TRAFFIC SIGNAL CONTROLLER EQUIPMENT FOR THIS PROJECT SHALL BE "SIEMENS (EAGLE)" TO MATCH THE EXISTING ADJACENT SYSTEM.

LEGEND

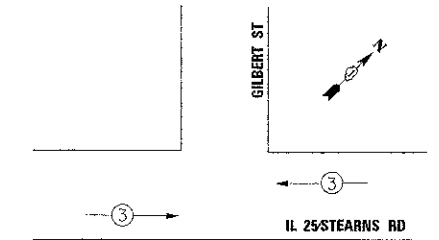
- ← ⊙ → DUAL ENTRY PHASE
- NUMBER REFERS TO ASSOCIATED PHASE
- ← ⊠ → PROTECTED LEFT TURN PHASE

TEMPORARY CONTROLLER SEQUENCE



TEMPORARY PHASE DESIGNATION DIAGRAM STAGE 1C

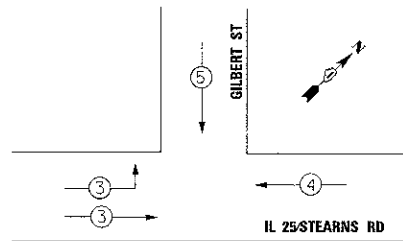
TEMPORARY EMERGENCY VEHICLE PREEMPTION SEQUENCE



TEMPORARY EMERGENCY VEHICLE PREEMPTORS STAGE 1C	
EMERGENCY VEHICLE PREEMPTOR	3
MOVEMENT	← →

TEMPORARY PHASE DESIGNATION DIAGRAM STAGES PRE-STAGE, 1A, & 1B

TEMPORARY EMERGENCY VEHICLE PREEMPTION SEQUENCE

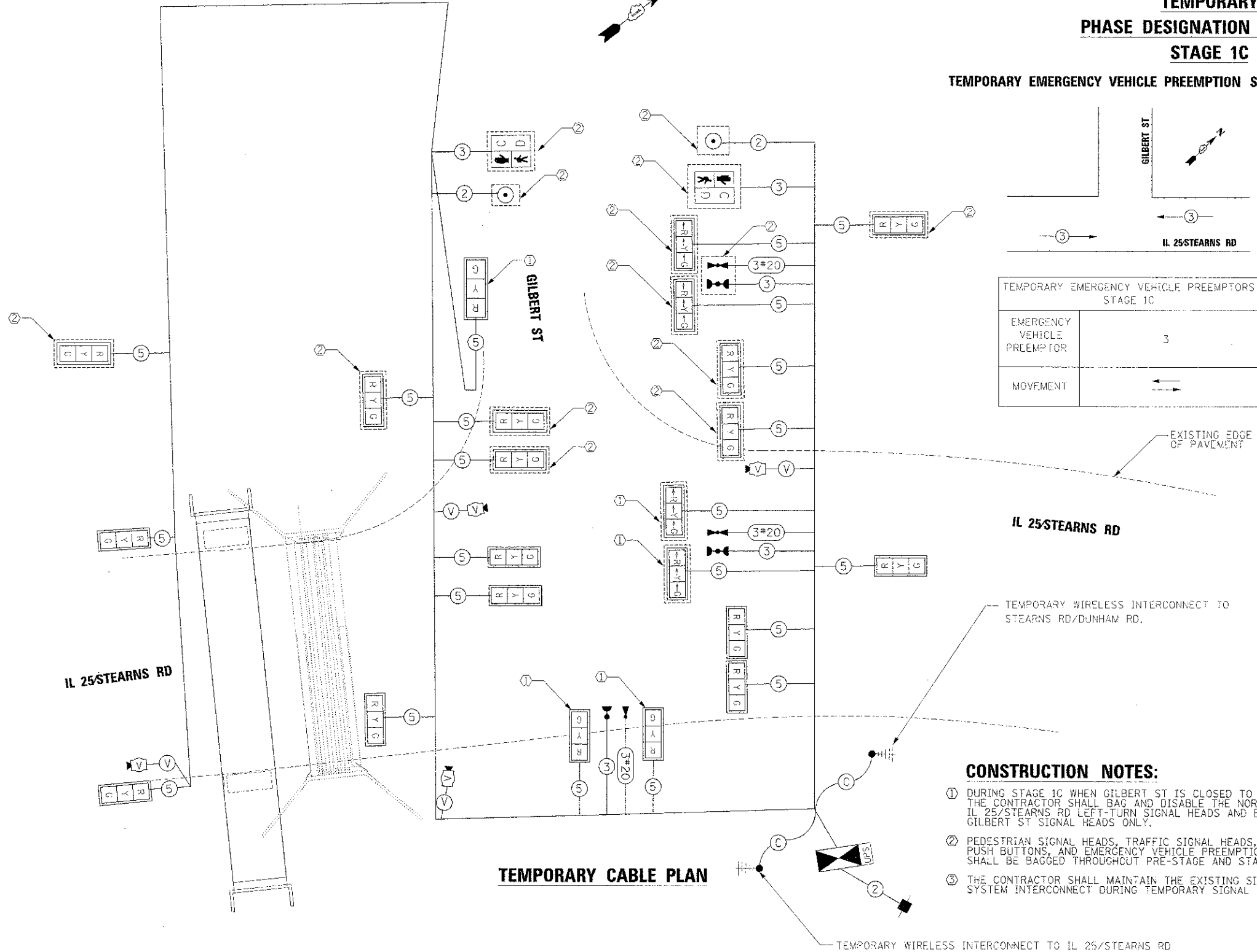


TEMPORARY EMERGENCY VEHICLE PREEMPTORS PRE-STAGE, STAGES 1A & 1B			
EMERGENCY VEHICLE PREEMPTOR	3	4	5
MOVEMENT	← →	←	↓

I.D.O.T. TRAFFIC SIGNAL INSTALLATION ELECTRICAL SERVICE REQUIREMENTS					TOTAL WATTAGE
TYPE	NO. LAMPS	WATTAGE INCAND.	LED	%OPERATION	
SIGNAL (RED)	13	-	17	0.50	110.50
(YELLOW)	13	-	25	0.25	81.25
(GREEN)	13	-	15	0.25	48.75
ARROW	-	-	12	0.10	-
PED. SIGNAL	-	-	25	1.00	-
CONTROLLER	1	-	100	1.00	100.00
ILLUM. SIGN	-	-	25	0.05	-
VIDEO SYSTEM	1	150	-	1.00	150.00
FLASHER	-	-	-	0.50	-
ENERGY COSTS TO:				TOTAL =	490.50

ILLINOIS DEPARTMENT OF TRANSPORTATION

201 W. CENTER COURT
SCHAMBURG, ILLINOIS 60196
ENERGY SUPPLY CONTACT: MARTY RUGIN
PHONE: 847-608-2400
COMPANY: COMED



TEMPORARY CABLE PLAN

CONSTRUCTION NOTES:

- ① DURING STAGE 1C WHEN GILBERT ST IS CLOSED TO TRAFFIC, THE CONTRACTOR SHALL BAG AND DISABLE THE NORTHBOUND IL 25/STEARNS RD LEFT-TURN SIGNAL HEADS AND EASTBOUND GILBERT ST SIGNAL HEADS ONLY.
- ② PEDESTRIAN SIGNAL HEADS, TRAFFIC SIGNAL HEADS, PEDESTRIAN PUSH BUTTONS, AND EMERGENCY VEHICLE PREEMPTION EQUIPMENT SHALL BE BAGGED THROUGHOUT PRE-STAGE AND STAGE 1.
- ③ THE CONTRACTOR SHALL MAINTAIN THE EXISTING SIGNAL SYSTEM INTERCONNECT DURING TEMPORARY SIGNAL OPERATION.

FILE NAME =	DESIGNED - BC	REVISED -
...ND163598-shr-il-25-111-temo-ts-cable-plan	DRAWN - TMB	REVISED -
USER NAME = chank	CHECKED - MPM	REVISED -
PLST DATE = 5/18/2013	DATE = 01/18/2013	REVISED -



STATE OF ILLINOIS
DIVISION OF TRANSPORTATION

TEMP CABLE PLAN, TEMP PHASE DESIGNATION DIAGRAM, & TEMP EMERGENCY VEHICLE PREEMPTION SEQUENCE, IL 25/STEARNS RD AT GILBERT ST, PRE-STAGE, STAGES 1A, 1B, & 1C

P.A.P. RTE. 361	SECTION 06-00214-18-RP	COUNTY KANE	TOTAL SHEETS 451	SHEET NO. 234
CONTRACT NO. 63598				ILLINOIS FED. AID PROJECT

SCALE: 1"=20' SHEET NO. 23 OF 49 SHEETS STA. TO STA.