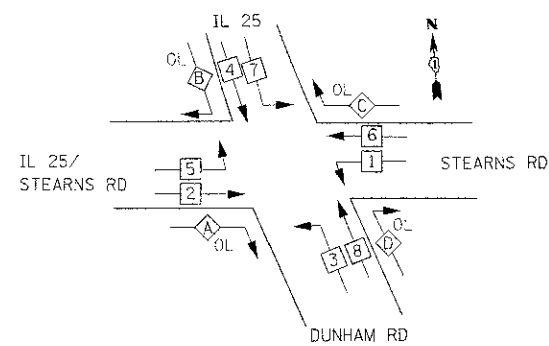


**SCHEDULE OF QUANTITIES**

ITEM	UNIT	TOTAL
UNDERGROUND CONDUIT, GALVANIZED STEEL, 2" DIA.	FOOT	172
UNDERGROUND CONDUIT, GALVANIZED STEEL, 2 1/2" DIA.	FOOT	107
UNDERGROUND CONDUIT, GALVANIZED STEEL, 4" DIA.	FOOT	93
HANDHOLE	EACH	1
ELECTRIC CABLE IN CONDUIT, SIGNAL NO. 14 2C	FOOT	1,977
ELECTRIC CABLE IN CONDUIT, SIGNAL NO. 14 5C	FOOT	999
ELECTRIC CABLE IN CONDUIT, EQUIPMENT GROUNDING CONDUCTOR, NO. 6 1C	FOOT	967
TRAFFIC SIGNAL POST, GALVANIZED STEEL 14 FT.	EACH	2
CONCRETE FOUNDATION, TYPE A	FOOT	8
DRILL EXISTING HANDHOLE	EACH	3
TRAFFIC SIGNAL BACKPLATE, LOUVERED, ALUMINUM	EACH	1
TEMPORARY TRAFFIC SIGNAL INSTALLATION	EACH	1
REBUILD EXISTING SIGNAL HEAD, LED	EACH	2
MODIFY EXISTING CONTROLLER	EACH	1
REMOVE ELECTRIC CABLE FROM CONDUIT	FOOT	665
REMOVE EXISTING TRAFFIC SIGNAL EQUIPMENT	EACH	1
REBUILD EXISTING HANDHOLE	EACH	1
REMOVE EXISTING HANDHOLE	EACH	1
REMOVE EXISTING CONCRETE FOUNDATION	EACH	1
TEMPORARY TRAFFIC SIGNAL TIMING	EACH	1

**CONTROLLER SEQUENCE**

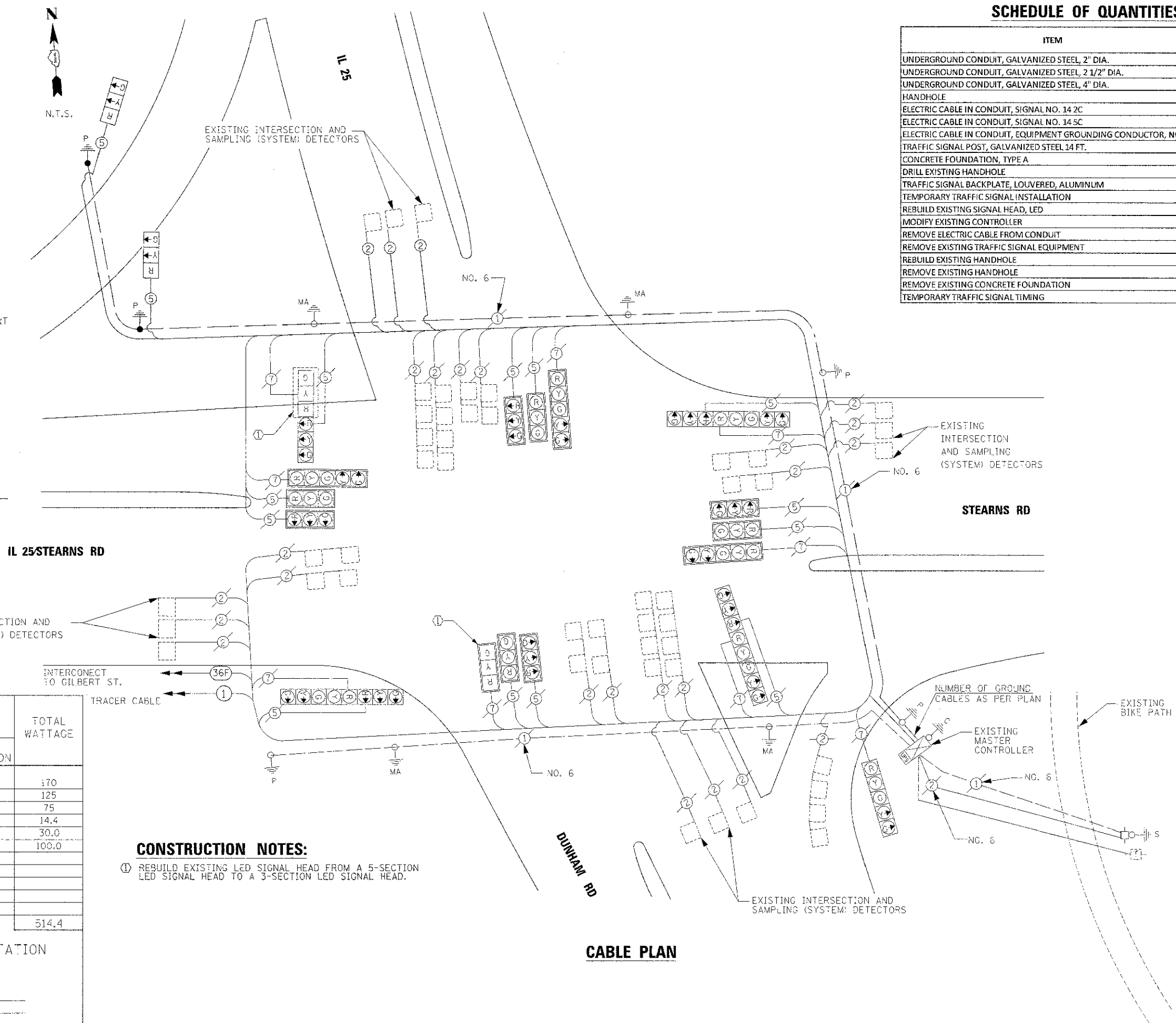


**LEGEND**

- ◻ SINGLE ENTRY PHASE
- ◻ DUAL ENTRY PHASE
- OL OVERLAP
- ◻ FREE-FLOW RIGHT TURN MOVEMENT TO BE CONTINUOUSLY ON
- \* - NUMBER REFERS TO ASSOCIATED PHASE

OVERLAP LETTER	PERMISSIVE PHASE	PROTECTED PHASE
A	2	3
B	CONTINUOUS OVERLAP FREE-FLOW RIGHT	
C	6	7
D	8	1

**PROPOSED PHASE DESIGNATION DIAGRAM**



**CONSTRUCTION NOTES:**

- ① REBUILD EXISTING LED SIGNAL HEAD FROM A 5-SECTION LED SIGNAL HEAD TO A 3-SECTION LED SIGNAL HEAD.

THE END OF THE TRACER CABLE WILL BE CONTINUOUS AND EXTEND INTO THE CONTROLLER CABINET

I.D.O.T. TRAFFIC SIGNAL INSTALLATION ELECTRICAL SERVICE REQUIREMENTS				TOTAL WATTAGE
TYPE	NO. LAMPS	WATTAGE LED	%OPERATION	
SIGNAL (RED)	20	17	0.50	170
(YELLOW)	20	25	0.25	125
(GREEN)	20	15	0.25	75
ARROW	12	12	0.10	14.4
FREEFLOW ARROW	2	15	1.00	30.0
CONTROLLER	1	100	1.00	100.0
FLASHER				0.50
ENERGY COSTS TO:				TOTAL = 514.4

**ILLINOIS DEPARTMENT OF TRANSPORTATION**

201 W. CENTER COURT  
 SCHAMBURG, ILLINOIS 60196  
 ENERGY SUPPLY CONTACT: MARY RUBIN  
 PHONE: 847-608-2400  
 COMPANY: COMED

FILE NAME: ...	DESIGNED - BC	REVISED -
USER NAME: ...	DRAWN - TMB	REVISED -
PLT DATE: ...	CHECKED - MPM	REVISED -
	DATE - 01/18/2013	REVISED -



**STATE OF ILLINOIS  
 DIVISION OF TRANSPORTATION**

**SCHEDULE OF QUANTITIES, CABLE PLAN, AND  
 PHASE DESIGNATION DIAGRAM  
 IL 25/STEARNS RD AT IL 25/DUNHAM RD**

SCALE: 1"=20' SHEET NO. 39 OF 49 SHEETS STA. TO STA.

F.A.P. RTE. 361	SECTION 06-00214-18-RP	COUNTY KANE	TOTAL SHEETS 451	SHEET NO. 250
CONTRACT NO. 63598				ILLINOIS FED. AID PROJECT