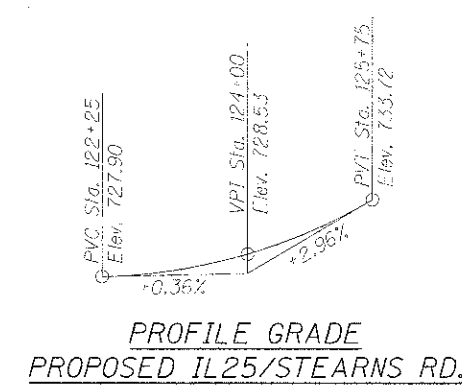
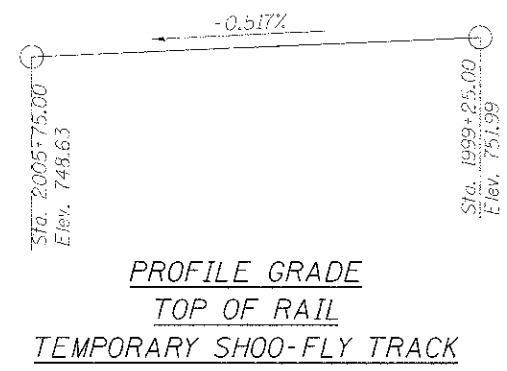
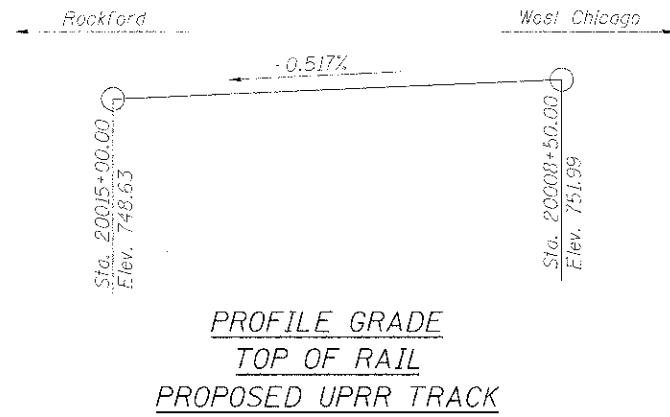


INDEX OF DRAWINGS

SHEET NO.	DESCRIPTION
UP-1	General Plan and Elevation
UP-2	Construction Notes (1 of 2)
UP-3	Construction Notes (2 of 2)
UP-4	Index of Drawings and Summary of Quantities
UP-5-12	Log of Borings
UP-13	Foundation Plan and Pile Details
UP-14	Construction Staging - Stage 1A
UP-15	Construction Staging - Stages 1B and 1C
UP-16	Temporary Support System Details
UP-17	End Bent Details (1 of 2)
UP-18	End Bent Details (2 of 2)
UP-19	Bents 2 and 4 - Plan and Elevation
UP-20	Bent 3 - Plan and Elevation
UP-21	Deck Cross Section
UP-22	Waterproofing Details
UP-23	Beam Framing Plan
UP-24	Beam Elevation and Design Data
UP-25	Assembly Details (1 of 2)
UP-26	Assembly Details (2 of 2)
UP-27	Structural Steel Details (1 of 2)
UP-28	Structural Steel Details (2 of 2)
UP-29	Deck Plate and Curb Layout
UP-30	Bridge Fence Railing Details
UP-31	Fascia Beam Details (1 of 3)
UP-32	Fascia Beam Details (2 of 3)
UP-33	Fascia Beam Details (3 of 3)
UP-34	Temporary Bridge General Plan and Elevation
UP-35	Temporary Bridge Pile Layout and Details
UP-36	Temporary Bridge End Bent Details
UP-37	Temporary Bridge Bents 2 and 3 Details
UP-38	Temporary Bridge Deck Plan
UP-39	Temporary Bridge Deck Sections, Details and Material Schedule
UP-40	Temporary Bridge Handrail Details
UP-41	Temporary Bridge Framing Plan
UP-42	Temporary Bridge Beam Details
UP-43	Temporary Bridge Precast End Bent Details
UP-44	Temporary Bridge Precast End Bent Wingwall Details
UP-45	Temporary Bridge Precast Bent Cap Details
UP-46	Existing Plans Sheet (1 of 7)
UP-47	Existing Plans Sheet (2 of 7)
UP-48	Existing Plans Sheet (3 of 7)
UP-49	Existing Plans Sheet (4 of 7)
UP-50	Existing Plans Sheet (5 of 7)
UP-51	Existing Plans Sheet (6 of 7)
UP-52	Existing Plans Sheet (7 of 7)



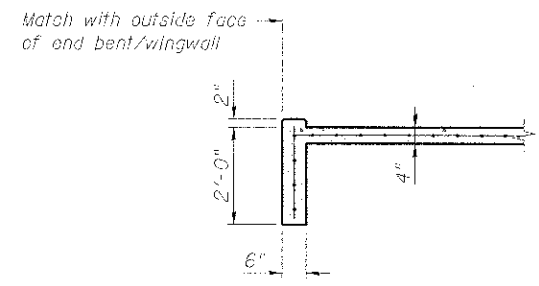
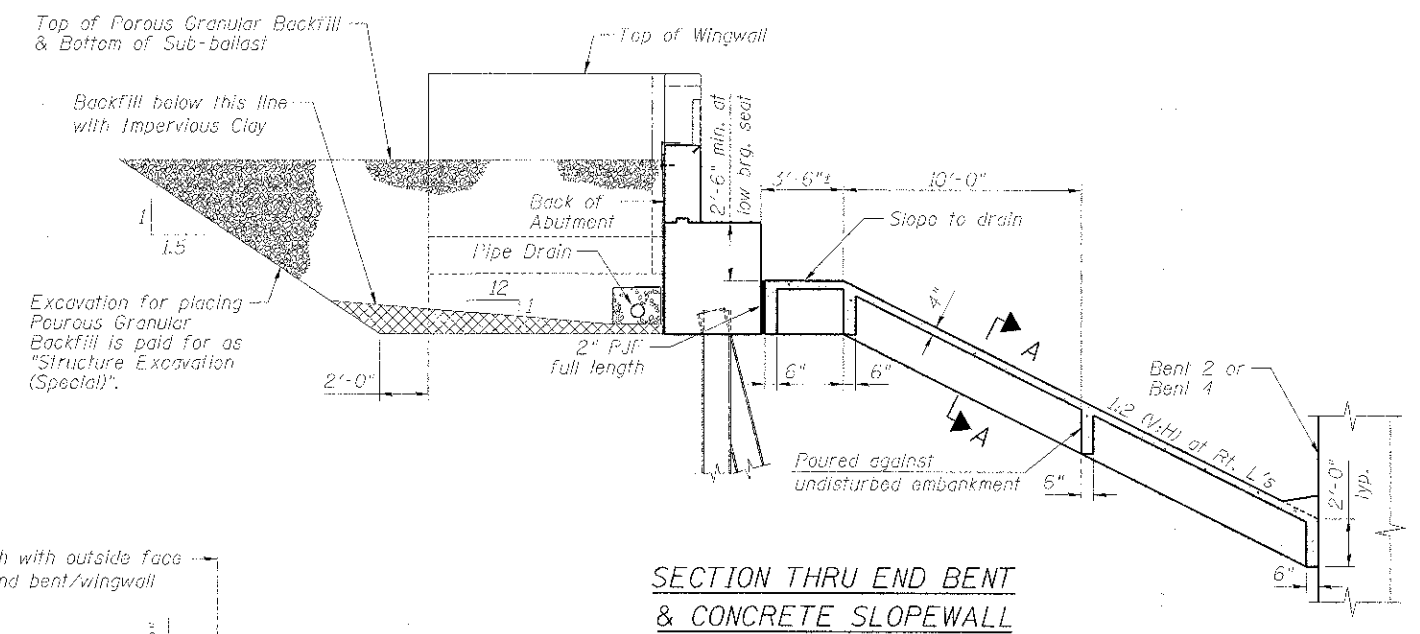
U.P.R.R. BRIDGE 37.71
BUILT 201 BY STATE OF ILLINOIS
OVER I.A.P. 361 ROUTE IL 25/STEARNS RD.
SECTION 06-00214-18-RP
STATION 20010+31.68 LOADING COOPER E-80
STRUCTURE NO. 045-3168

NAME PLATE
See Std. 515001

SUMMARY OF BILL OF MATERIALS

PAV ITEM NUMBER	DESCRIPTION	UNIT	QUANTITY
2090010	Porous Granular Backfill	Cu. Yd.	228
* 50100309	Removal of Existing Structures No. 1	Each	1
50100400	Removal of Existing Structures No. 2	Each	1
50500105	Furnishing and Erecting Structural Steel	L. Sum	1
50800205	Reinforcement Bars, Epoxy Coated	Pound	27,300
50901730	Bridge Fence Railing	Foot	428
51100100	Slope Wall 4 Inch	Sq. Yd.	194
51201900	Furnishing Steel Piles HPI4x89	Foot	5,705
51203900	Test Pile Steel HPI4x89	Each	5
51500100	Name Plates	Each	1
58000100	Membrane Waterproofing	Sq. Ft.	3,932
58700300	Concrete Sealer	Sq. Ft.	5,350
Z0002300	Ballast	Cu. Yd.	40
Z0018905	Drill and Grout Bars	Each	96
Z0073500	Temporary Support System	L. Sum	1
X5020200	Structure Excavation (Special)	Cu. Yd.	1,079
X5030225	Concrete Structures (Special)	Cu. Yd.	388.2
X5120005	Driving Piles (Special)	Foot	5,705
X6013600	Pipe Underdrains 4" (Modified)	Foot	96
XX006847	Vinyl Fence, 4'	Foot	774
XX008386	Precast Concrete Box Segments	L. Sum	1
XX008626	Temporary Bridge	L. Sum	1
	Pile Shoes (Special)	Each	60
	Structure Marker Signs	Each	2

* Estimated quantity for Removal of Existing Structures No. 1:
Concrete = 579 Cu. Yd.
Steel = 104,420 Pounds



Note:
All drainage system components shall extend to 2'-0" from the end of each wingwall except an outlet pipe shall extend until intersecting with side slopes. The pipes shall drain into concrete headwalls. (See Article 601.05 of the Standard Specifications and Highway Standard 60110).

benesch
engineers • scientists • planners

Alfred Benesch & Company
205 North Michigan Avenue, Suite 2400
Chicago, Illinois 60601
312-565-0450 Job No. 10074

FILE NAME: Perm_Br_024_Garino.tex.dgn	USER NAME: pgrimm	DESIGNED: JLS	REVISIONS:	STATE OF ILLINOIS DEPARTMENT OF TRANSPORTATION	M.P. 37.71 BELVIDERE SUBDIVISION - STRUCTURE NO. 045-3168 INDEX OF DRAWINGS AND SUMMARY OF QUANTITIES	F.A.P. 37E	SECTION 06-00214-18-RP	COUNTY KANE	TOTAL SHEETS 451	SHEET NO. 264
	PLD DATE: 12/13/2012	CHECKED: LRB	REVISIONS:						CONTRACT NO. 63598	
		CHECKED: LRB	REVISIONS:						ILLINOIS FED. AID PROJECT	

X:\100005\10074\Engineering\Documents_Phase1\15N_045-3168\UPRR_Bridge\PLANS\Perm_Br_024_Garino.tex.dgn 3:06:32 PM 12/13/2012