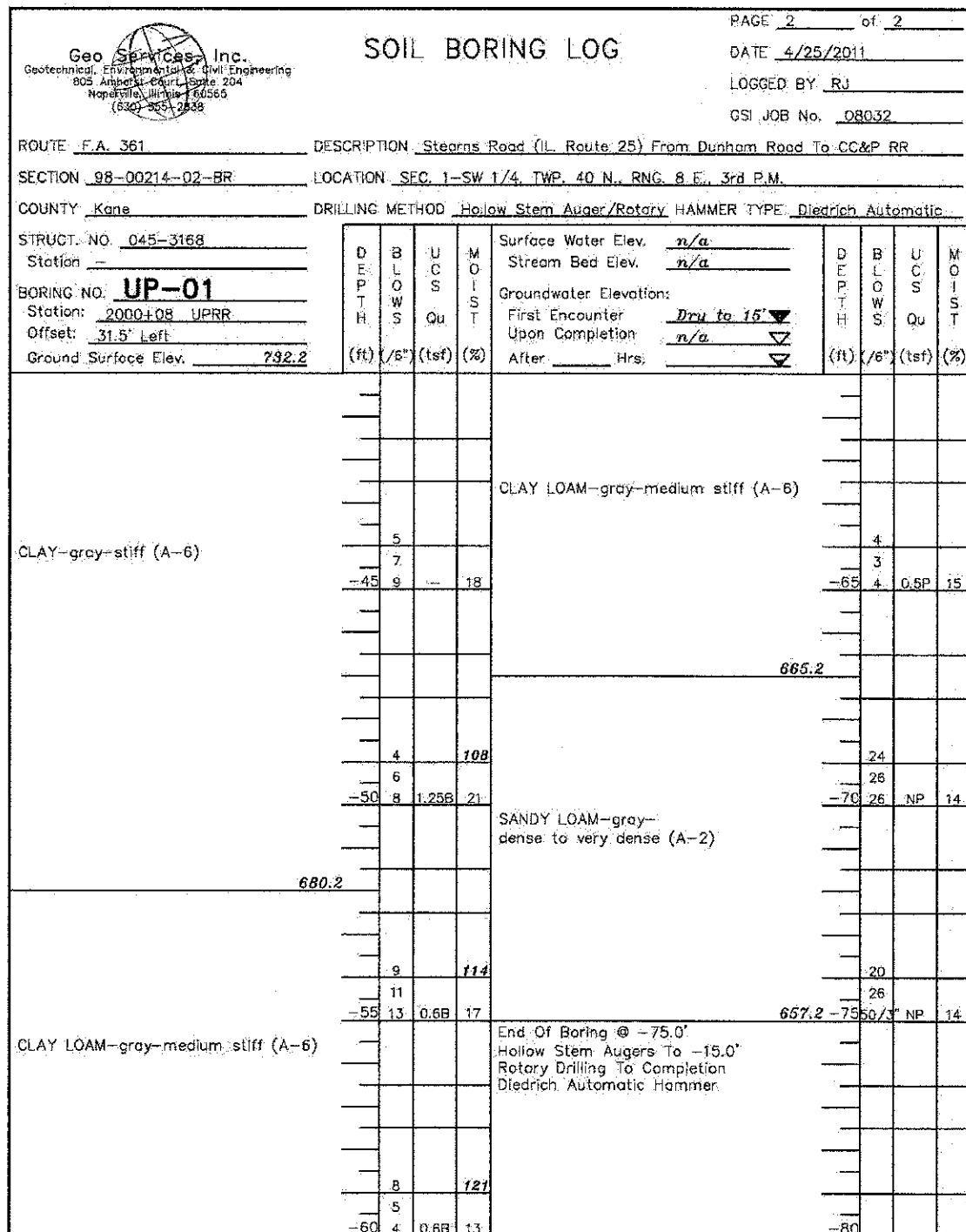


The Unconfined Compressive Strength (UCS) Failure Mode is indicated by (B-Bulge, S-Shear, P-Penetrometer) ST-Shelby Tube Sample VS-Vane Shear Test
The SPT (N value) is the sum of the last two blow values in each sampling zone (AASHTO T206) The Unit Dry Weight (pcf) is noted in Italics above moist (%)
NR-No Recovery



The Unconfined Compressive Strength (UCS) Failure Mode is indicated by (B-Bulge, S-Shear, P-Penetrometer) ST-Shelby Tube Sample VS-Vane Shear Test
The SPT (N value) is the sum of the last two blow values in each sampling zone (AASHTO T206) The Unit Dry Weight (pcf) is noted in Italics above moist (%)
NR-No Recovery

X:\1000095\10074\Engineering\Documents_Phase_1\SN_045_3168_UPRR_Bridge\PLANS\Permit_Br_085_Borings_1.dgn 3:08:33 PM 12/13/2012