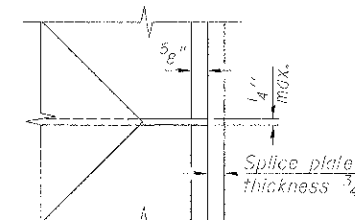
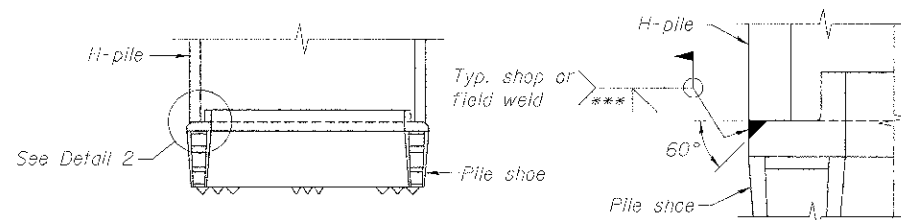
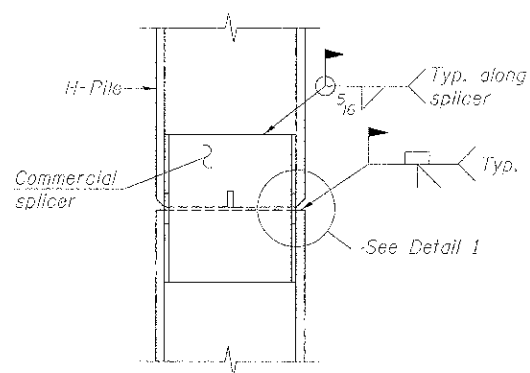


PLAN - FOUNDATION & PILE LAYOUT

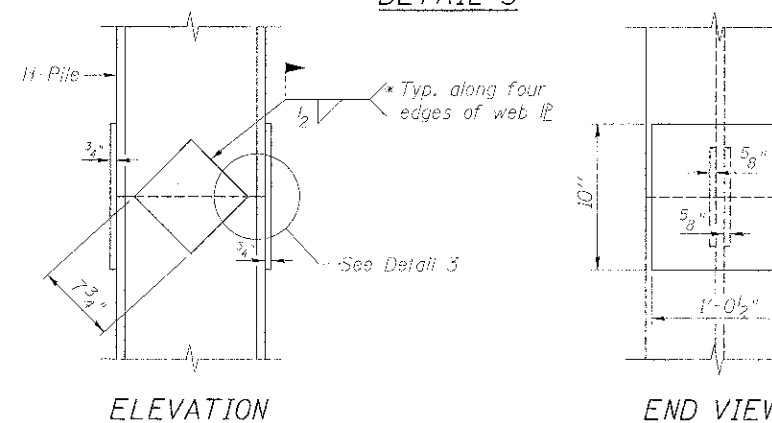
Note:
All Piles are steel HP14x89.



LEGEND

- H Vertical HP14x89 Pile
- H HP14x89 Pile at 3:12 Forward Batter
- (H) HP14x89 Test Pile

H-PILE SHOE ATTACHMENT



WELDED PLATE FIELD SPLICE

BILL OF MATERIAL

DESCRIPTION	UNIT	QUANTITY
Furnishing Steel Piles HP14x89	Foot	5,705
Driving Piles (Special)	Foot	5,705
Test Pile Steel HP14x89	Each	5
Pile Shoes (Special)	Each	60

PILE DRIVING NOTES:

- All End Bent piles shall be driven to 50 ton capacity, all four End Bent Wingwall piles shall be driven to 12 ton capacity, and all intermediate bent piles shall be driven to 10 ton capacity. If any pile cannot be driven to this capacity, the Engineer must be notified.
- Estimated capacity of driven piles shall be calculated using the Modified ENR Formula with F.S. = 5, unless otherwise noted. Direct questions to the Engineer.
- The steel H-piles shall be according to ASTM A572, Grade 50.

- * Interrupt welds 1/4" from end of web and/or each flange.
- ** Remove portions of backup plates that extend outside the flanges.
- *** Weld size per pile shoe manufacturer (5/16" min.).

benesch
engineers • scientists • planners
Alfred Benesch & Company
205 North Michigan Avenue, Suite 2400
Chicago, Illinois 60601
312-565-0450 Job No. 10074

FILE NAME =	USER NAME = rgrsm	DESIGNED - JLS	REVISED -
Perm-3r-013-Pile-Layout.dgn		CHECKED - LRB	REVISED -
		DRAWN - RMG	REVISED -
		CHECKED - LRB	REVISED -

**STATE OF ILLINOIS
DEPARTMENT OF TRANSPORTATION**

**M.P. 37.71 BELVIDERE SUBDIVISION - STRUCTURE NO. 045-3168
FOUNDATION PLAN AND PILE DETAILS**

F.A.P. NO. = 361	SECTION = 06-00214-18-RP	COUNTY = KANE	TOTAL SHEETS = 451	SHEET NO. = 273
SHEET NO. UP-13 OF UP-52 SHEETS				CONTRACT NO. 63598
ILLINOIS FED. AID PROJECT				

X:\100005\10074\Engineer\rg Documents\Phase-11\SN_045-3168_UPRR-Bridge\PLANS\Perm.Br.-013.P1e-Layout.dgn 3:12:23 PM 12/13/2012