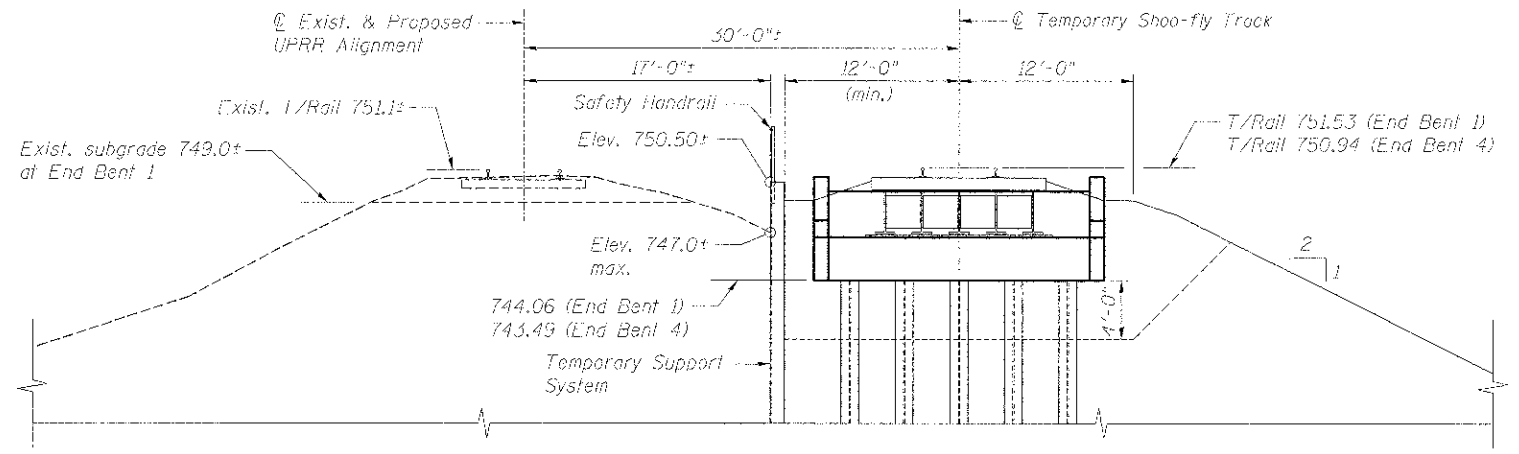


PLAN - STAGE IA CONSTRUCTION

PROPOSED CONSTRUCTION SEQUENCE

- Stage IA - Construct Temporary Shoo-fly bridge and embankment.
- Maintain rail traffic on existing UPRR track.
- Maintain existing vehicular traffic patterns on Il. 25/Stearns Road except for night time closures to erect the temporary span over the roadway, and for removal of the existing bridge span.
1. Construct portion of shoo-fly embankment to 4 feet below the bottom of cap elevation of the new abutments for the temporary bridge.
 2. Install Temporary Support System as shown to protect existing UPRR track.
 3. Drive steel pipe piling and construct the abutments and bents for the temporary bridge.
 4. Complete construction of the shoo-fly embankment.
 5. Complete construction of the shoo-fly bridge.
 6. During a track outage, cut-over UPRR track to the shoo-fly alignment.
 7. Remove existing bridge superstructure.



CROSS SECTION - STAGE IA CONSTRUCTION

End Bent 1 shown (Looking toward West Chicago)
End Bent 4 similar

NOTE:
See sheet UP-16 for Views A-A and B-B.



Alfred Benesch & Company
205 North Michigan Avenue, Suite 2400
Chicago, Illinois 60601
312-565-0450 Job No. 10074

FILE NAME =	USLR NAME = mprgm	DESIGNED - JLS	REVISED -
PLOT SCALE =	PLOT DATE = 12/13/2012	CHECKED - LRB	REVISED -
		DRAWN - RMG	REVISED -
		CHECKED - LRB	REVISED -

STATE OF ILLINOIS
DEPARTMENT OF TRANSPORTATION

M.P. 37.71 BELVIDERE SUBDIVISION - STRUCTURE NO. 045-3168
CONSTRUCTION STAGING - STAGE 1A

SHEET NO. UP-14 OF UP-52 SHEETS

P.A.P. R.T.E. 361	SECTION 06-00214-18-RP	COUNTY KANE	TOTAL SHEETS 451	SHEET NO. 274
CONTRACT NO. 63598			ILLINOIS FED. AID PROJECT	

X:\1000005\10074\Engineering\Documents\Phase 1\SN: 045-3168_UPRR_Bridge\PLANS\Perms\Br_014_Const_Stage1.dgn 3/12/25 PM 12/13/2012