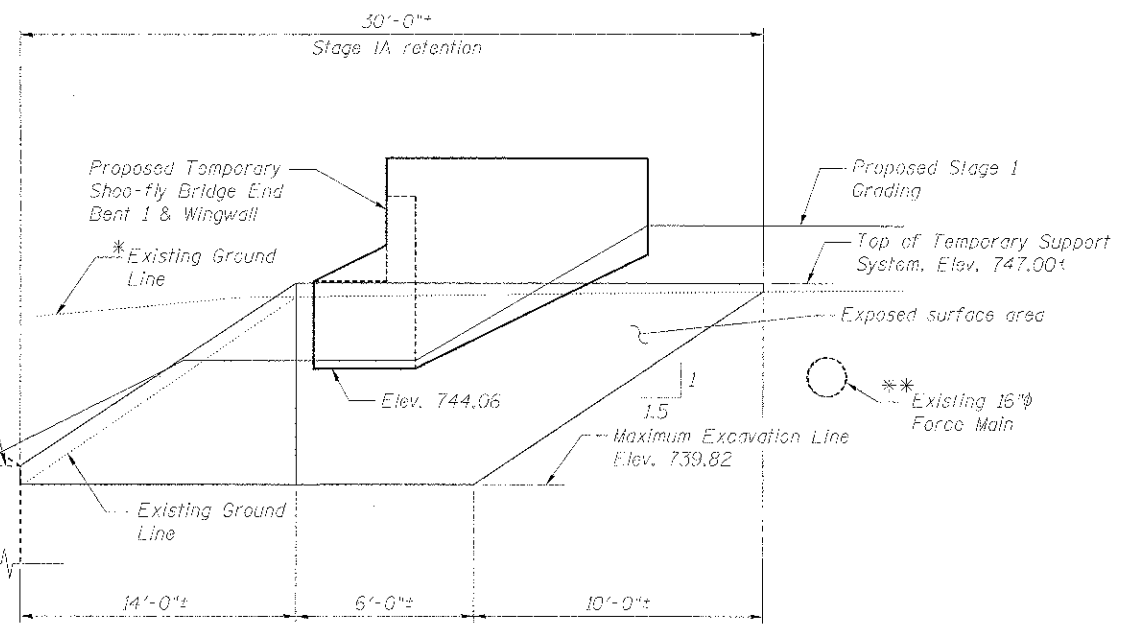


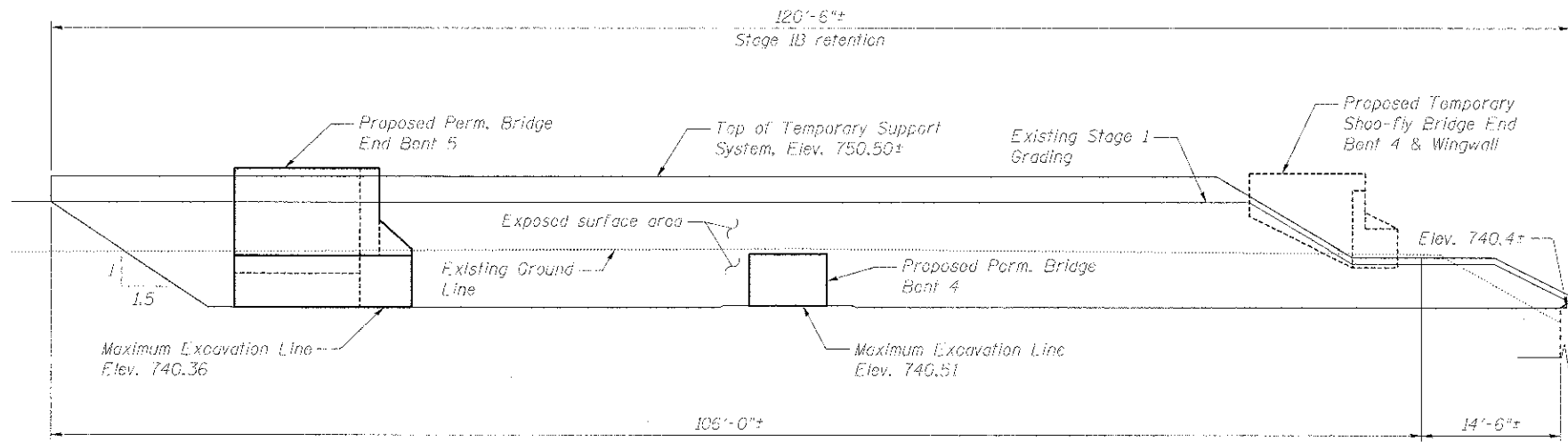
VIEW A-A



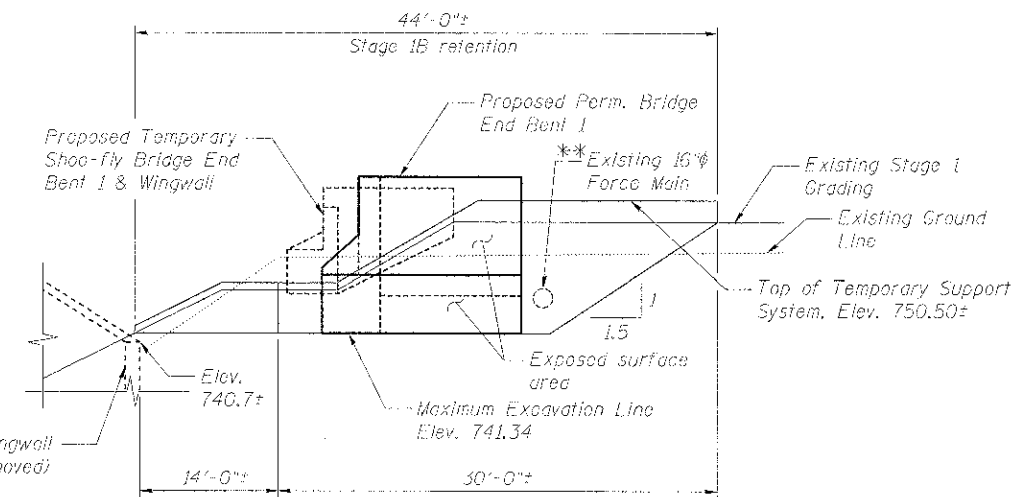
VIEW B-B

TEMPORARY SUPPORT SYSTEM - ELEVATION
(Stage 1A)

*(Existing 16" Force Main to be relocated by others, invert elevation unknown)



VIEW C-C



VIEW D-D

TEMPORARY SUPPORT SYSTEM - ELEVATION
(Stage 1B)

*(Existing 16" Force Main to be relocated by others, invert elevation unknown)

BILL OF MATERIAL
(Stage 1A)

ITEM	UNIT	TOTAL
*** Temporary Support System	Sq. Ft.	214

BILL OF MATERIAL
(Stage 1B)

ITEM	UNIT	TOTAL
*** Temporary Support System	Sq. Ft.	990

*** For Information Only. See Note 3.

NOTES:

1. See sheet UP-14 for location of Views A-A and B-B.
2. See sheet UP-15 for location of Views C-C and D-D.
3. The area measured for the Temporary Support System is the vertical exposed surface area envelope of the excavation supported by the Temporary Support System (For Information Only).
4. All dimensions for the Temporary Support System are measured along the face of the wall.

benesch
engineers · scientists · planners
Alfred Benesch & Company
205 North Michigan Avenue, Suite 2400
Chicago, Illinois 60601
312-565-0450 Job No. 10074

FILE NAME =	USER NAME =	DESIGNED - JLS	REVISED -
Form_Br_016_TSFS_Elevs.dgn	prgmmr	CHECKED - LRB	REVISED -
	PLOT SCALE =	DRAWN - RMG	REVISED -
	PLOT DATE = 12/13/2012	CHECKED - LRB	REVISED -

STATE OF ILLINOIS
DEPARTMENT OF TRANSPORTATION

M.P. 37.71 BELVIDERE SUBDIVISION - STRUCTURE NO. 045-3168
TEMPORARY SUPPORT SYSTEM DETAILS

SHEET NO. UP-16 OF UP-52 SHEETS

F.A.P. RTE.:	SECTION	COUNTY	TOTAL SHEETS	SHEET NO.
361	06-00214-18-RP	KANE	451	276
CONTRACT NO. 63598			ILLINOIS FED. AID PROJECT	

X:\100005\10074\Engineering\Documents\Phase-1\SNL_045_3168_LUPRR Bridge\PI ANS\Perm. Br_016_TSFS_Elevs.dgn

3/2/28 PM

12/13/2012