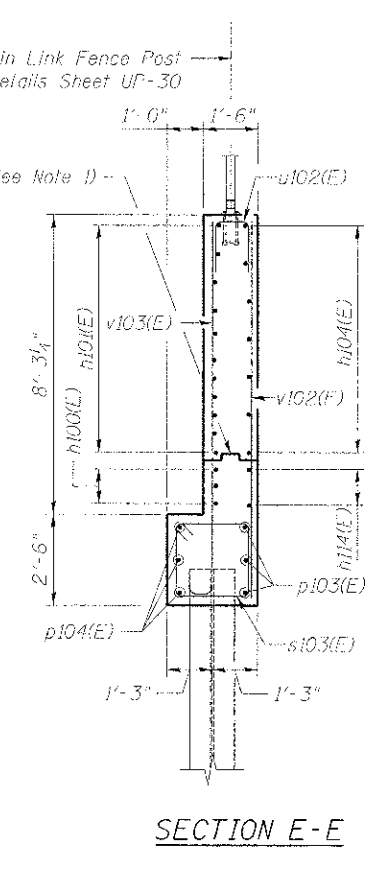
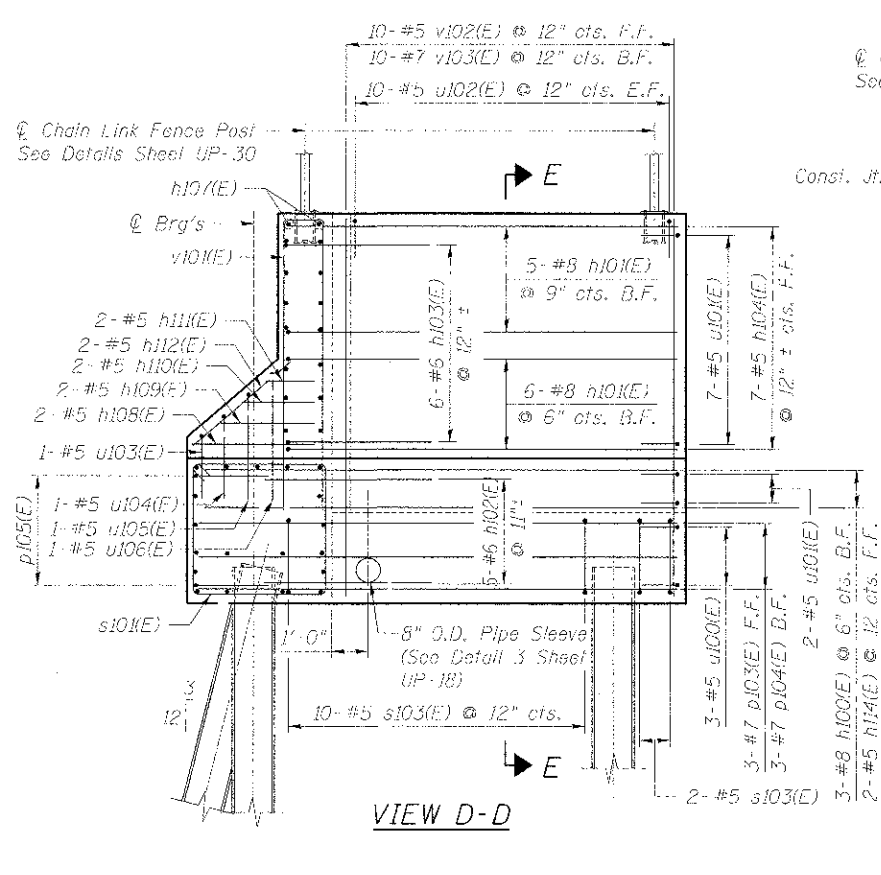
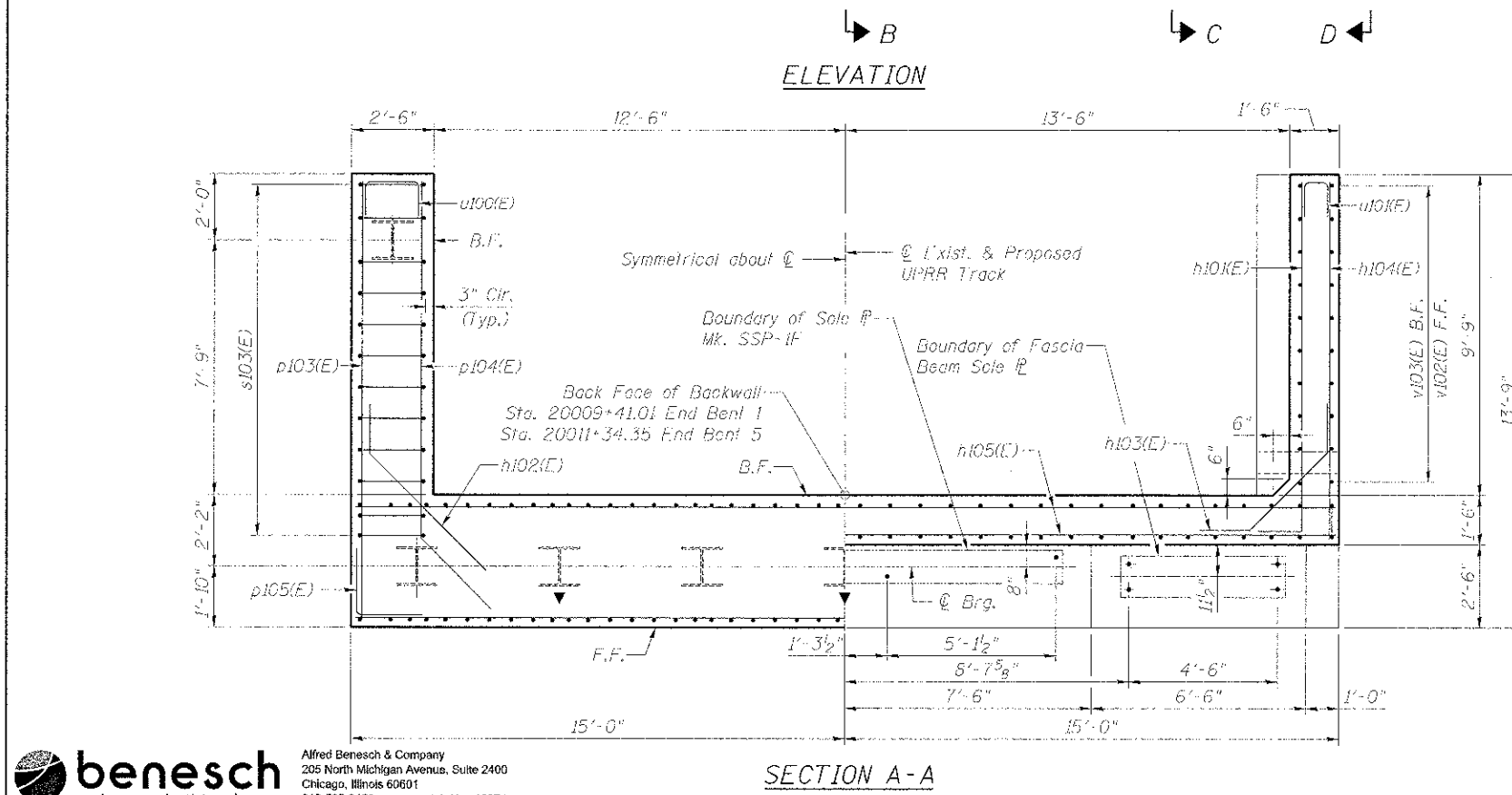


- NOTES:**
1. For Const. Jt. w/2"x6" Key (Formed Up) see Detail 1, Sheet UP-18.
  2. For Pile Layout see Sheet UP-9.
  3. For Backwall detail see Detail 2, Sheet UP-18.
  4. See End Bent Drainage Plan, Sheet UP-18.
  5. B.F. = Back Face  
F.F. = Front Face  
L.F. = Each Face



**benesch**  
engineers · scientists · planners

Alfred Benesch & Company  
205 North Michigan Avenue, Suite 2400  
Chicago, Illinois 60601  
312-565-0450 Job No. 10074

DESIGNED - RK	REVISIONS -
CHECKED - LRB	REVISIONS -
DRAWN - RK	REVISIONS -
CHECKED - LRB	REVISIONS -

**STATE OF ILLINOIS**  
**DEPARTMENT OF TRANSPORTATION**

**M.P. 37.71 BELVIDERE SUBDIVISION - STRUCTURE NO. 045-3168**  
**END BENT DETAILS (1 OF 2)**

SECTION	COUNTY	TOTAL SHEETS	SHEET NO.
06-00214-18-RF	KANE	45	27
CONTRACT NO. 63598		ILLINOIS FED. AID PROJECT	

FILE NAME: P:\000205\10074\Engineering\Documents\Phase 1\NSN\_045\_3168\_UPRR\_Bridge\PLANS\Perm.Br-017\_End Bent Details.dgn  
PLOT SCALE: 1/8" = 1'-0"  
PLOT DATE: 12/13/2012

SHEET NO. UP-17 OF UP-52 SHEETS

X:\100205\10074\Engineering\Documents\Phase 1\NSN\_045\_3168\_UPRR\_Bridge\PLANS\Perm.Br-017\_End Bent Details.dgn 3/12/2012 12:13:20 PM