

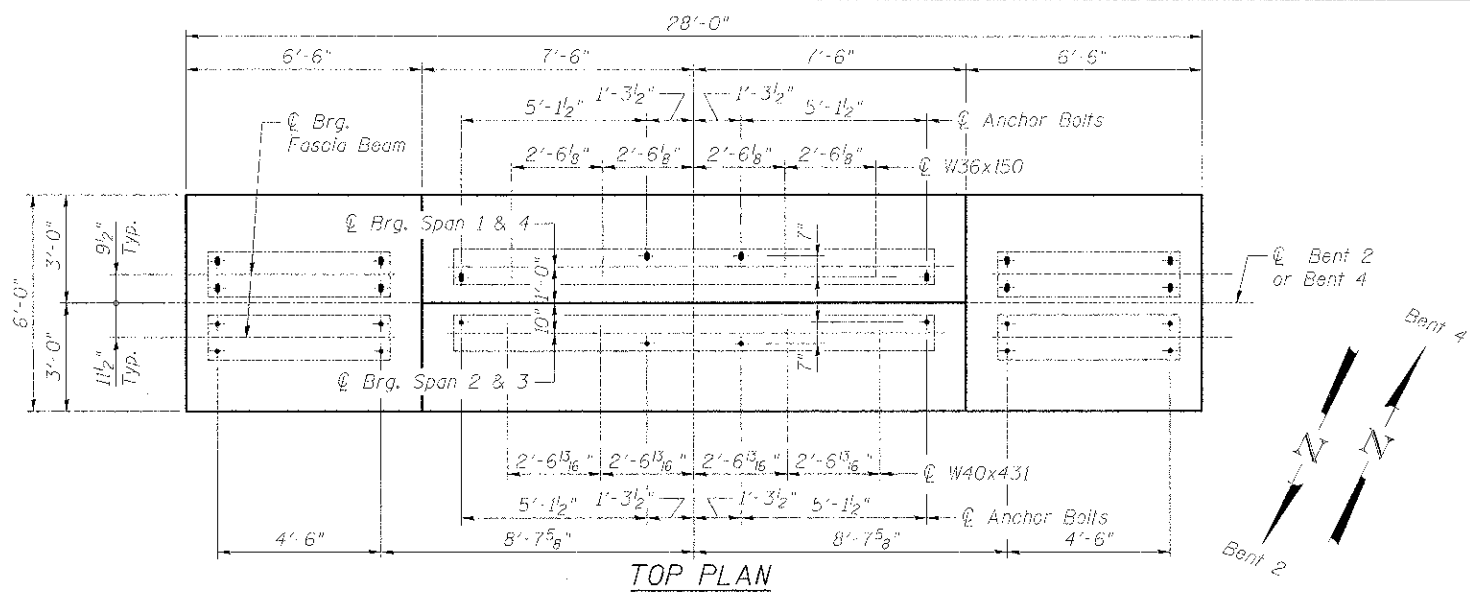
BENTS 2 & 4
BILL OF MATERIAL

| Bar | No. | Size | Length | Shape |
|----------------------------------|---------|------|--------|-------|
| h200(E) | 52 | #5 | 27'-8" | |
| p200(E) | 8 | #6 | 14'-8" | |
| p200(L) | 44 | #6 | 27'-8" | |
| s200(E) | 112 | #5 | 16'-8" | |
| s200(L) | 28 | #5 | 14'-8" | |
| s202(E) | 364 | #5 | 6'-8" | |
| u200(E) | 40 | #5 | 5'-8" | |
| u200(L) | 20 | #5 | 8'-6" | |
| u202(E) | 52 | #5 | 8'-8" | |
| v200(E) | 66 | #5 | 12'-4" | |
| v200(L) | 66 | #5 | 10'-6" | |
| Concrete Structures (Special) | Cu. Yd. | | 200.8 | |
| Reinforcement Bars, Epoxy Coated | Pound | | 10,880 | |

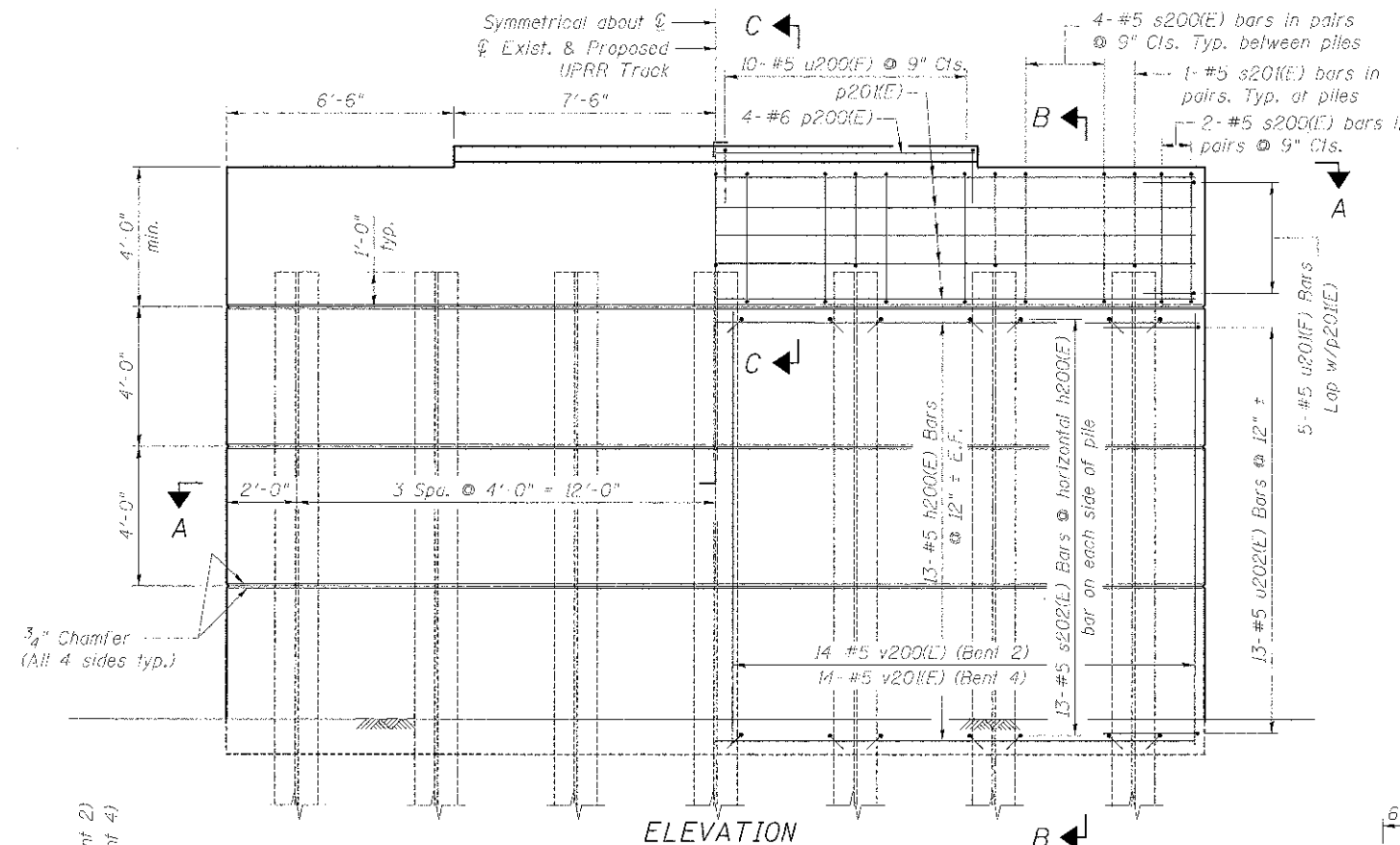
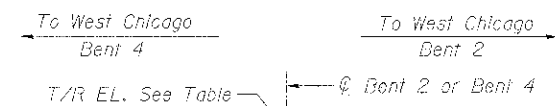
Notes:
1. All bar dimensions are out to out.
2. The quantities provided are for two (2) bents.

TABLE OF ELEVATIONS

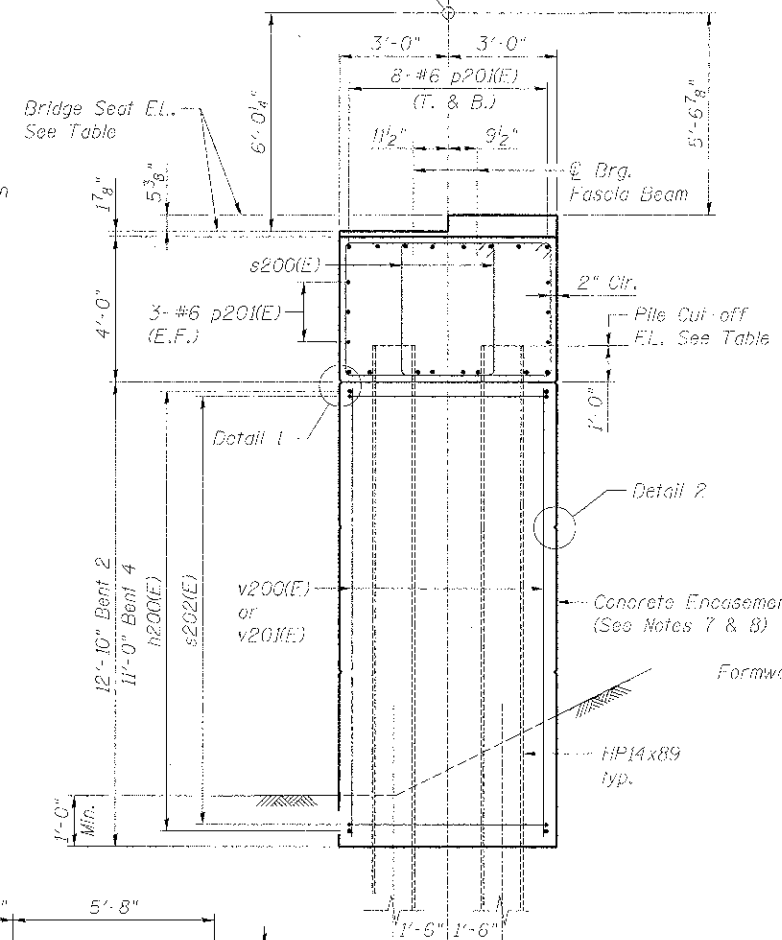
| T/Rail EL. | Bridge Seat EL. | | | | Pile Cul-off | |
|------------|-----------------|--------|--------|--------|--------------|--------|
| | Bent 2 | Bent 4 | Span 1 | Span 2 | Span 3 | Span 4 |
| Bent 2 | Bent 4 | Span 1 | Span 2 | Span 3 | Span 4 | Bent 2 |
| 751.35 | 750.69 | 745.78 | 745.33 | 744.67 | 745.12 | 742.17 |



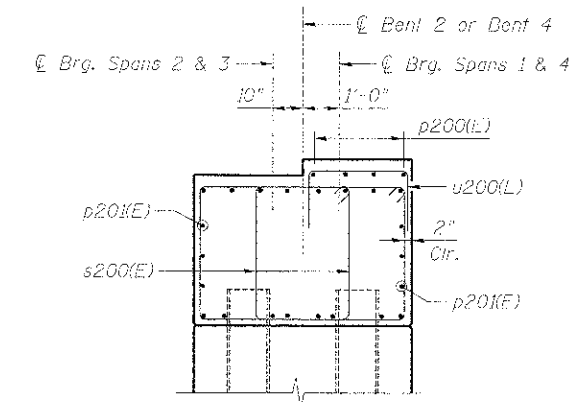
TOP PLAN



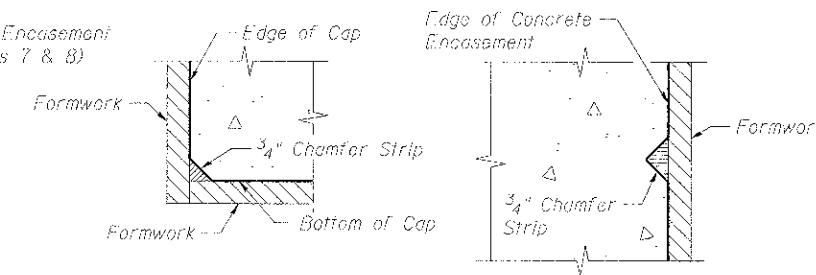
ELEVATION



SECTION B-B



SECTION C-C

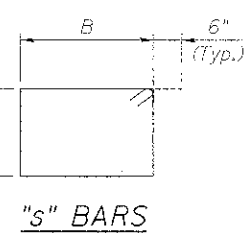
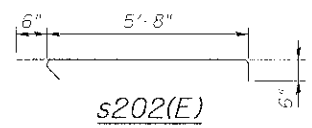


DETAIL 1

DETAIL 2

NOTES:

1. Piles to be driven and bent cap poured in Stage 2.
2. Concrete Encasement to be poured in Stage 3.
3. For Pile Layout see Sheet UP-13.
4. Adjust reinforcement as required to miss anchor bolts.
5. Concrete Sealer shall be applied to all exposed surfaces.
6. B.F. = Back Face
F.F. = Front Face
E.F. = Each Face
7. The Contractor shall use self-consolidating concrete (SCC) for all bent encasement concrete. The self-consolidating concrete shall conform to all requirements as specified in the Special Provisions. Cost of SCC shall be included with the cost of Concrete Structures (Special).
8. The Contractor shall provide adequate forms to contain the increased hydraulic pressure of the self-consolidating concrete.



| Bar | "A" | "B" |
|---------|-------|-------|
| u200(E) | 1'-6" | 2'-8" |
| s200(E) | 3'-8" | 4'-2" |
| s200(L) | 2'-8" | 4'-2" |

| Bar | "A" | "B" |
|---------|-------|-------|
| u200(E) | 1'-6" | 2'-8" |
| u200(L) | 1'-6" | 5'-6" |
| u202(E) | 1'-6" | 5'-8" |

benesch
engineers • scientists • planners
Alfred Benesch & Company
205 North Michigan Avenue, Suite 2400
Chicago, Illinois 60601
312-585-0450 Job No. 10074

STATE OF ILLINOIS
DEPARTMENT OF TRANSPORTATION

M.P. 37.71 BELVIDERE SUBDIVISION - STRUCTURE NO. 045-3168
BENTS 2 AND 4 - PLAN AND ELEVATION

| | | | |
|-------------------------------------|-----------------------|---------------|------------|
| FILE NAME: Penn.Br_019_Bent.2.4.Dwg | USER NAME: jrg/mmm | DESIGNED: JLS | REVISIONS: |
| PLD) SCALE: | PLD) DATE: 12/13/2012 | CHECKED: LRB | REVISIONS: |
| | | DRAWN: RK | REVISIONS: |
| | | CHECKED: LRB | REVISIONS: |

| | | | | |
|---------------------------------|-------------------------|--------------|--------------------|----------------|
| DATE: 12/13/2012 | SECTION: 06-03214-18-RP | COUNTY: KANE | TOTAL SHEETS: 451 | SHEET NO.: 279 |
| SHEET NO. UP-19 OF UP-52 SHEETS | | | CONTRACT NO. 63598 | |