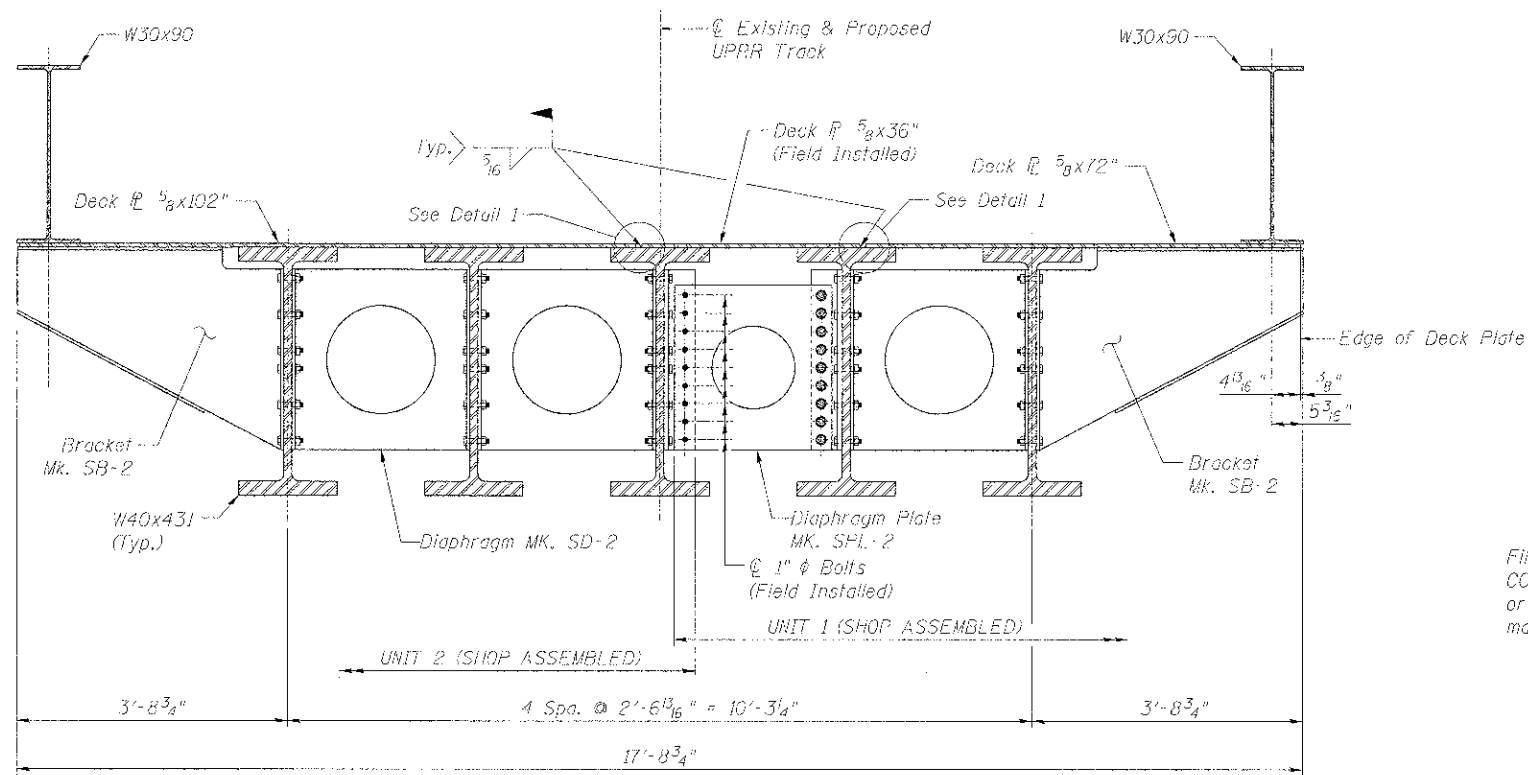
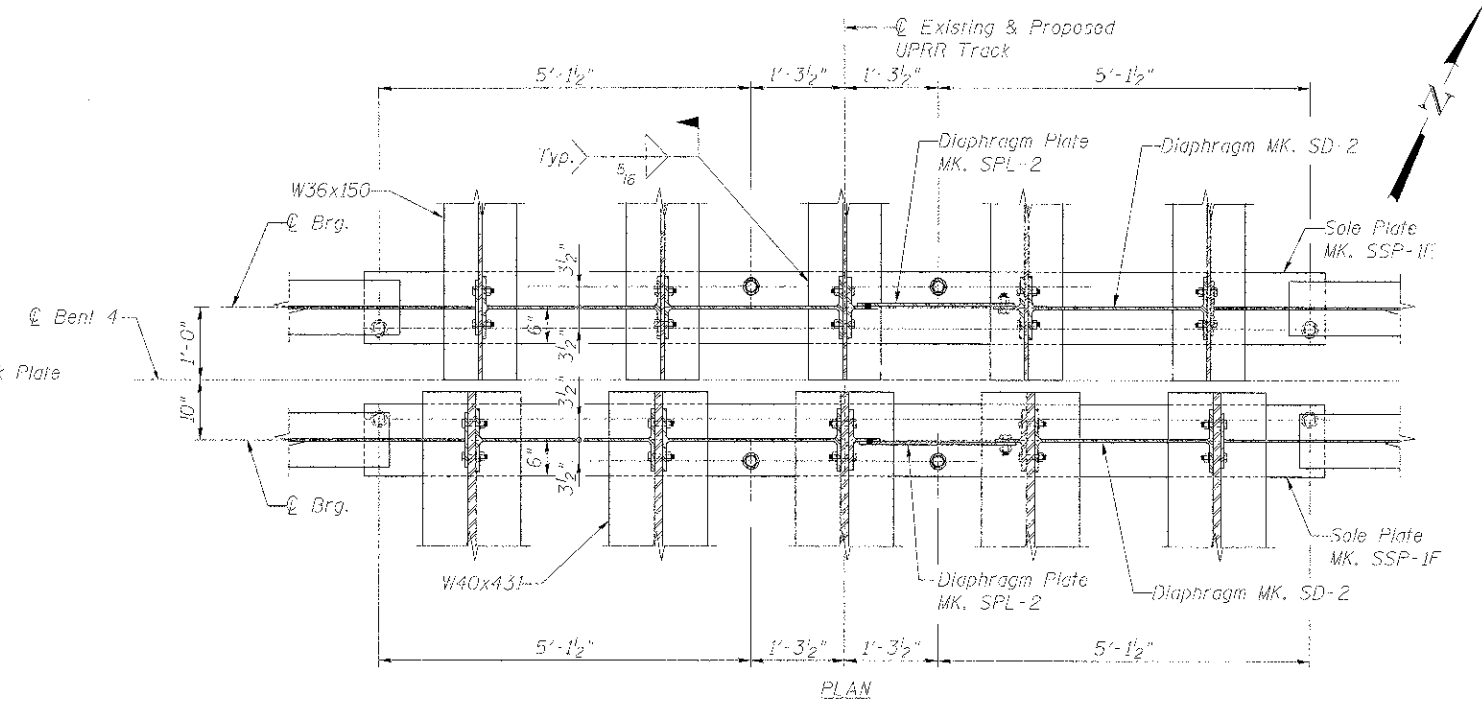


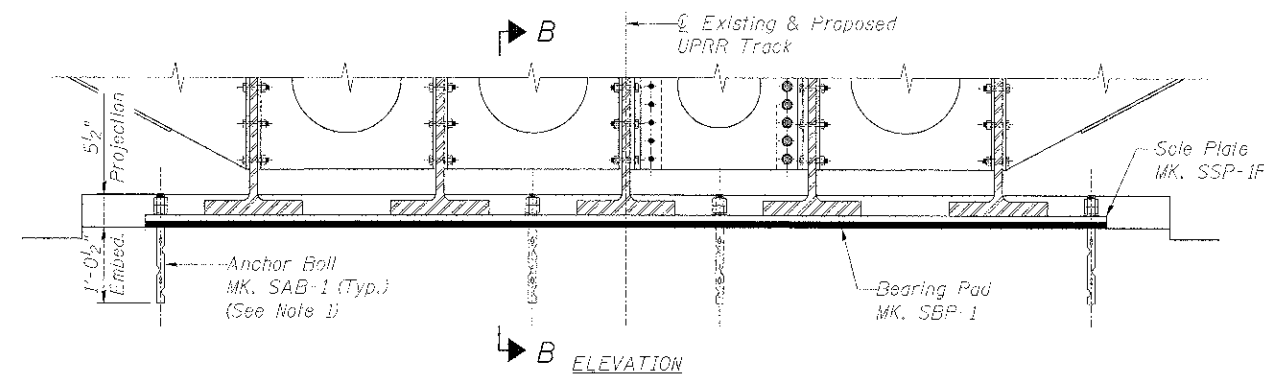
SECTION - ASSEMBLED SPAN AT INTERIOR DIAPHRAGM
 (Section Shown at Span 3,
 Span 1, 2 and 4 similar)



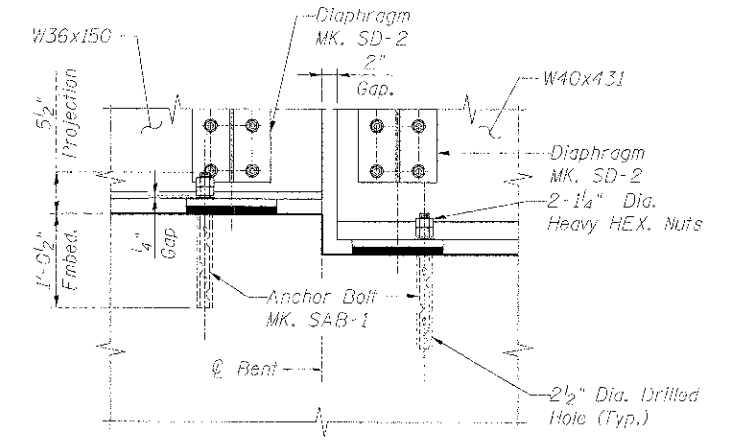
SECTION - ASSEMBLED SPAN AT END DIAPHRAGM
 (Section Shown at Span 3,
 Span 1, 2 and 4 similar)



PLAN

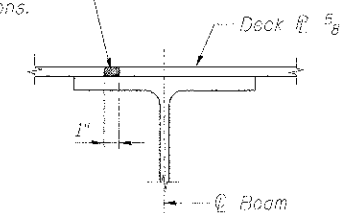


B ELEVATION
BEARING ASSEMBLY DETAILS
 (Section Shown at Bent 4 through Span 3)



SECTION B-B

Fill gap in field with Carlisle
 CCW-201 Polyurethane Sealant
 or approved equal per
 manufacturer's instructions.



DETAIL 1

- NOTES:**
1. Install Anchor Bolt in 2 1/2" Dia. Drilled Holes w/ Epoxy Grout.
 2. For Anchor Bolt Detail see Sheet UP-27.
 3. For Bearing Pad Details see Sheet UP-28.

benesch
 engineers • scientists • planners

Alfred Benesch & Company
 205 North Michigan Avenue, Suite 2400
 Chicago, Illinois 60601
 312-565-0450 Job No. 10074

STATE OF ILLINOIS
DEPARTMENT OF TRANSPORTATION

M.P. 37.71 BELVIDERE SUBDIVISION - STRUCTURE NO. 045-3168
ASSEMBLY DETAILS (1 OF 2)

FILE NAME =	USER NAME = rgrimm	DESIGNED = JLS	REVISED =
Permit.Br_025.Assembly.Details.Ldgn	PLLOT SCALE =	CHECKED = LRB	REVISED =
	DATE = 12/13/2012	DRAWN = RK	REVISED =
		CHECKED = LRB	REVISED =

SHEET NO. LP-25 OF UP-52 SHEETS

F.A.P. RTE. 361	SECTION 06-00214-18-RP	COUNTY KANE	TOTAL SHEETS 45	SHEET NO. 285
ILLINOIS FED. AID PROJECT			CONTRACT NO. 63598	

X:\100005\10074\Engineering\Documents\Phase II\SN:045-3168\UPRR Bridge\PLANS\Permit.Br_025.Assembly.Details.Ldgn 3/12/12 4:00 PM 12/13/2012