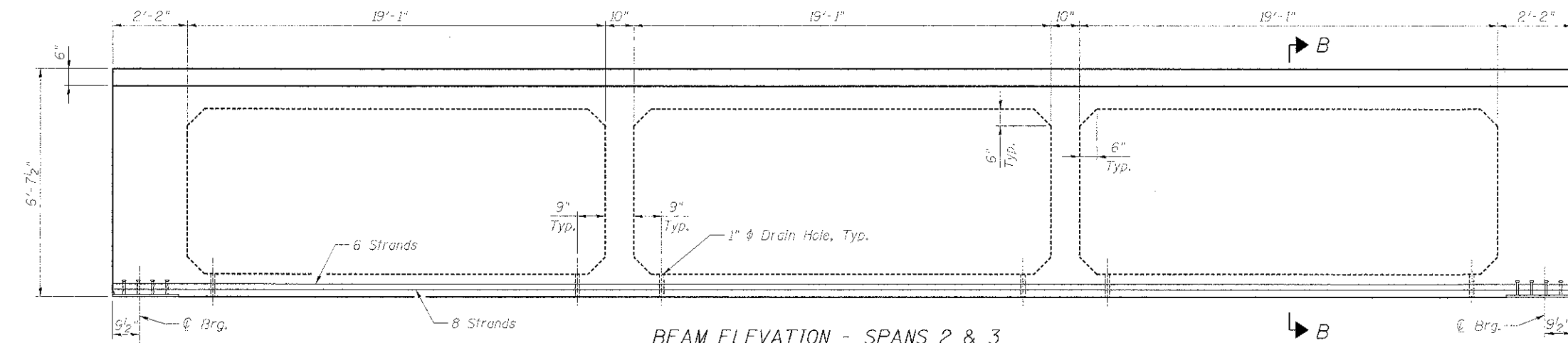
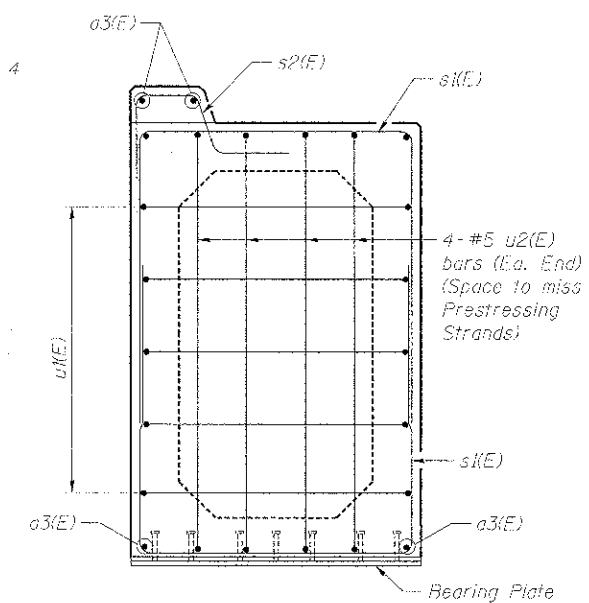


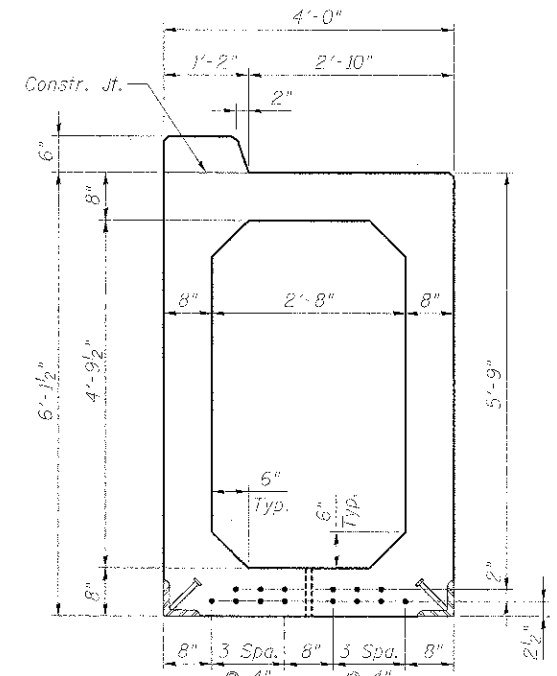
BEAM ELEVATION
(Showing Reinforcement)



BEAM ELEVATION - SPANS 2 & 3
(Showing Prestressing Strands)



VIEW A-A

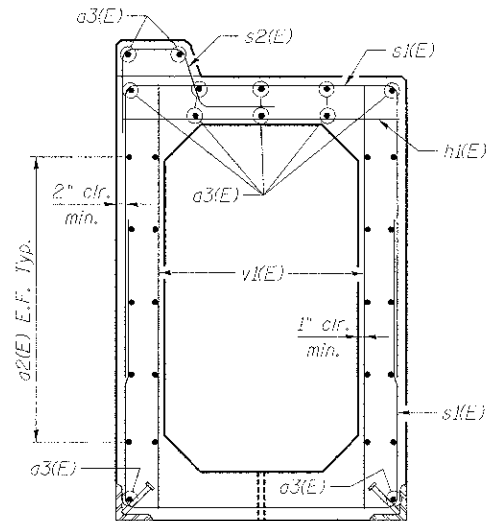


SECTION B-B

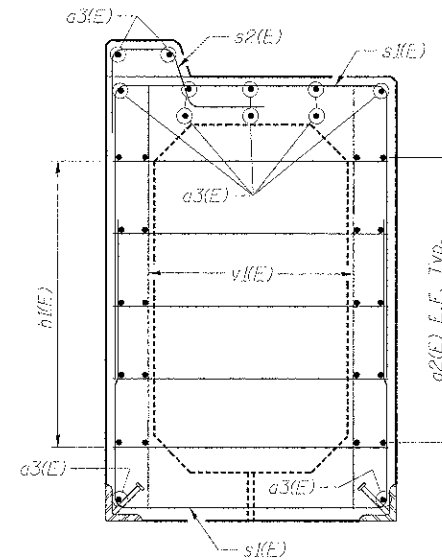
BILL OF MATERIAL*

ITEM	UNIT	TOTAL
Precast Concrete Box Segments	Foot	253

*For Information Only



SECTION C-C



SECTION D-D

*****BAR LIST
ONE BEAM ONLY**

Bar	No.	Size	Length	Shape
a2(E)	60	#7	24'-6"	
a3(E)	36	#5	23'-2"	
h1(E)	77	#5	3'-8"	
s1(E)	138	#5	13'-2"	
s2(E)	69	#5	3'-8"	
u1(E)	10	#5	5'-2"	
u2(E)	8	#5	9'-8"	
v1(F)	122	#5	5'-8"	

*** For Information Only
(Lifting weight = 135,000 lbs.)

NOTES:

1. Required release strength, f'ci, shall be 5,000 psi.
2. Required final strength, f'c, shall be 6,000 psi.
3. All prestressing strands are straight.
4. For Fascia Beam Bearing Detail, see Sheet UP-33.
5. For Fence Post Anchorage details, see Sheet UP-30.
6. See Sheet UP-33 for additional notes.

benesch
engineers • scientists • planners
Alfred Benesch & Company
205 North Michigan Avenue, Suite 2400
Chicago, Illinois 60601
312-565-0450 Job No. 10074

**STATE OF ILLINOIS
DEPARTMENT OF TRANSPORTATION**

**M.P. 37.71 BELVIDERE SUBDIVISION - STRUCTURE NO. 045-3168
FASCIA BEAM DETAILS (2 OF 3)**

F.A.P. R.T.E.	SECTION	COUNTY	TOTAL SHEETS	SHEET NO.
361	06-00214-18-RP	KANE	451	292
CONTRACT NO. 63598			ILLINOIS FED. AID PROJECT	

SHEET NO. UP-32 OF UP-52 SHEETS

X:\100005\10074\Engineering\Documents\Phase 1\NSL\045-3168-UPRR-Bridge\PI\ANS\Perm.Br.032-Fascia.Beam.Details.2.dgn 3/12/2012 3:12:48 PM