

To Rockford

To West Chicago

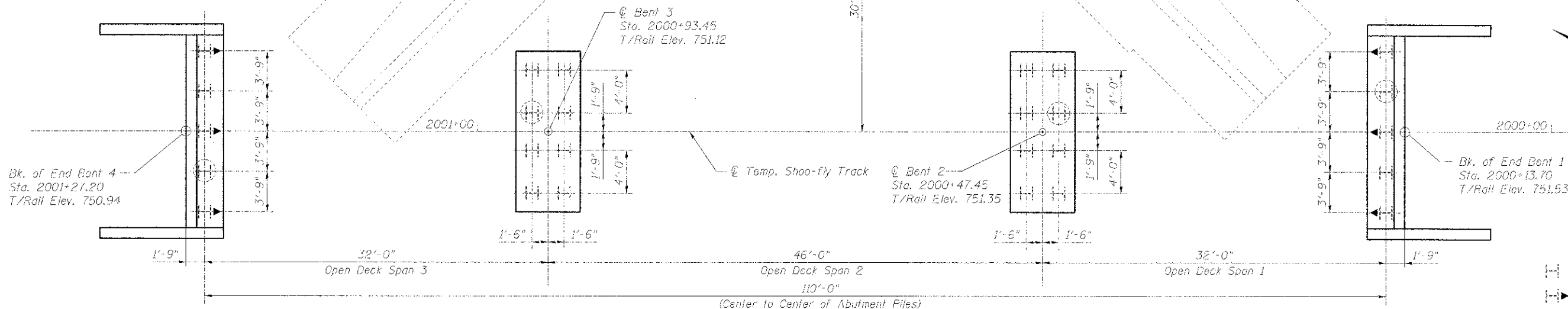
Alignment Tangent

Exist. & Prop. UPRR Track

Notes: All Piles are steel HP14x89.

ESTIMATED PILE LENGTHS

- End Bent 1 = 105 ft.
- Bent 2 = 105 ft.
- Bent 3 = 105 ft.
- End Bent 4 = 105 ft.



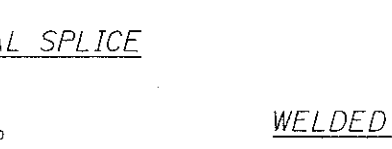
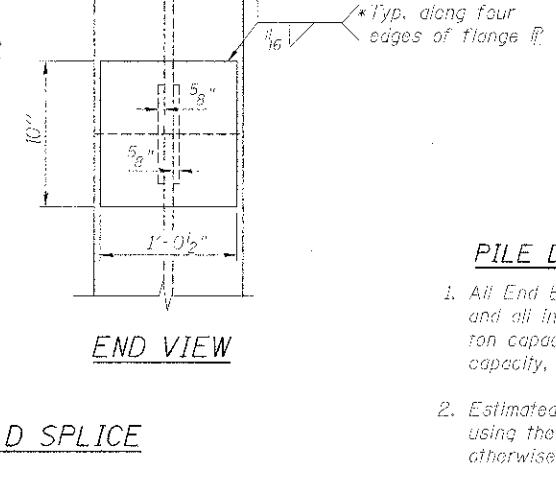
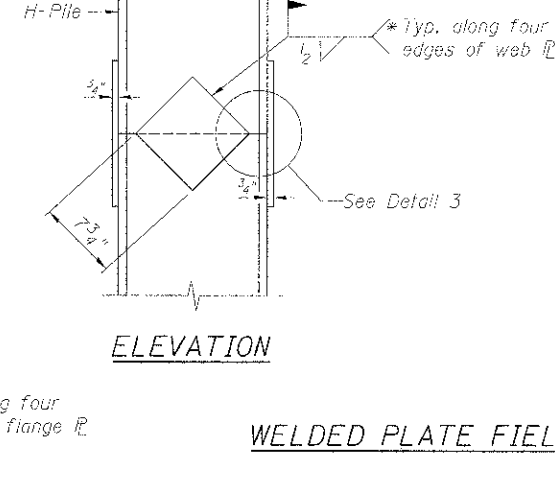
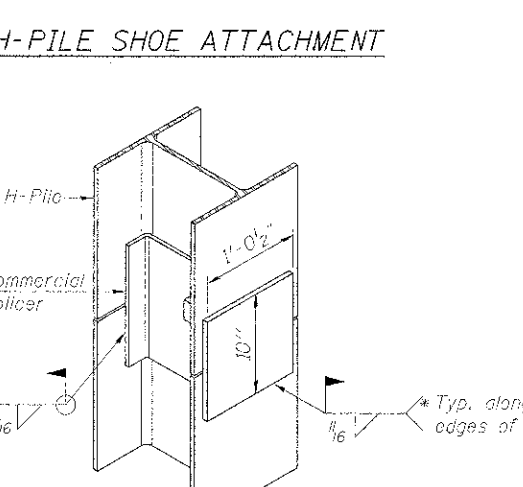
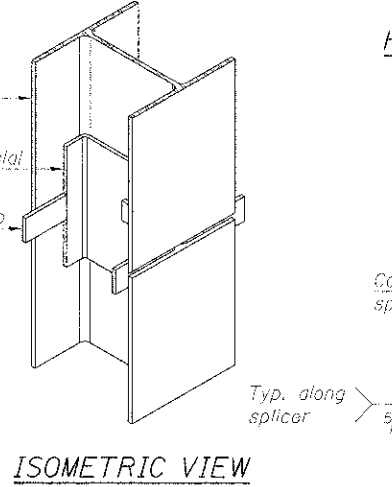
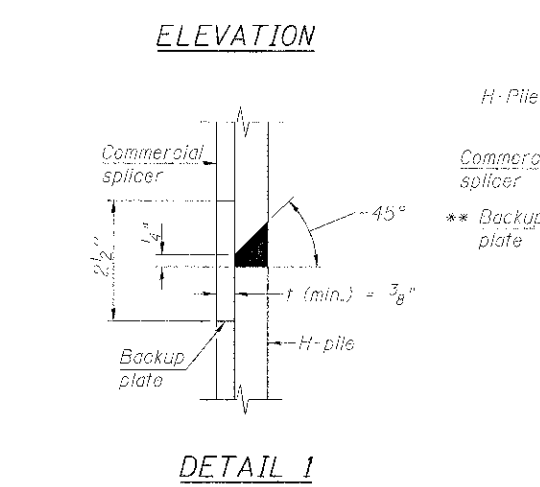
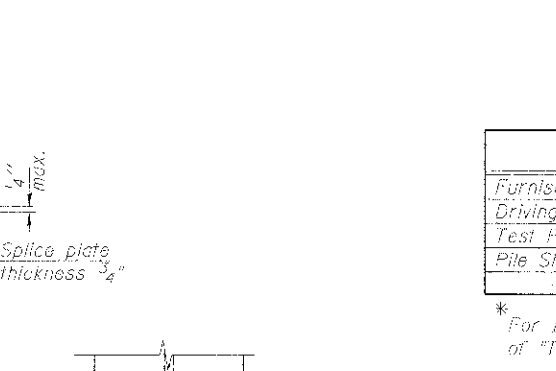
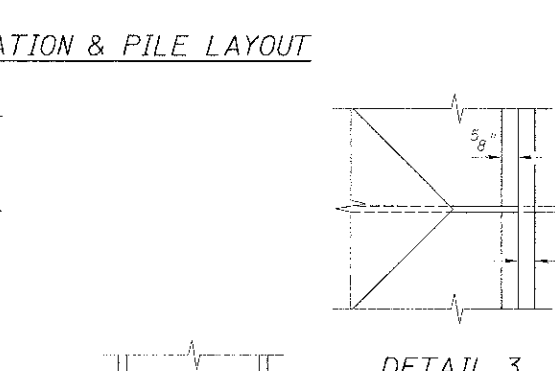
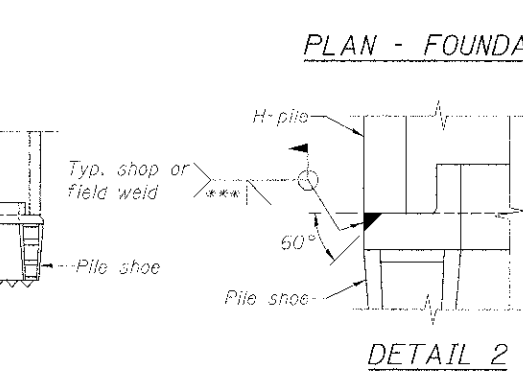
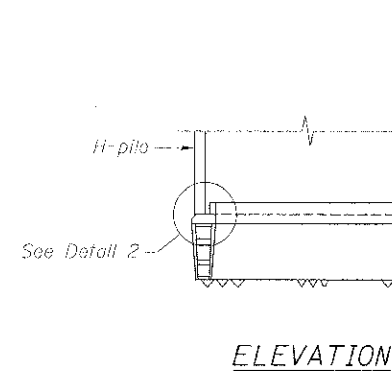
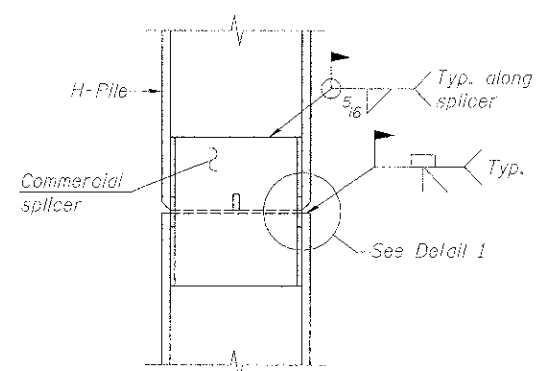
LEGEND

- HP14x89 Vertical Pile
- HP14x89 Pile at 3:12 Forward Batter
- HP14x89 Test Pile

BILL OF MATERIAL\*

DESCRIPTION	UNIT	QUANTITY
Furnishing Steel Piles HP14x89	Foot	2,310
Driving Piles (Special)	Foot	2,310
Test Pile Steel HP14x89	Each	4
Pile Shoes (Special)	Each	26

\* For information only, items are included in cost of "Temporary Bridge".



PILE DRIVING NOTES:

- All End Bent piles shall be driven to 55 ton capacity and all intermediate bent piles shall be driven to 50 ton capacity. If any pile cannot be driven to this capacity, the Engineer must be notified.
- Estimated capacity of driven piles shall be calculated using the Modified ENR Formula with F.S. = 5, unless otherwise noted. Direct questions to the Engineer.
- The steel H-piles shall be according to ASTM A572, Grade 50.

- \* Interrupt welds 1/4" from end of web and/or each flange.
- \*\* Remove portions of backup plates that extend outside the flanges.
- \*\*\* Weld size per pile shoe manufacturer (5/16" min.).

**benesch**  
engineers · scientists · planners

Alfred Benesch & Company  
205 North Michigan Avenue, Suite 2400  
Chicago, Illinois 60601  
312-565-0450 Job No. 10074

STATE OF ILLINOIS  
DEPARTMENT OF TRANSPORTATION

M.P. 37.71 BELVIDERE SUBDIVISION - TEMPORARY BRIDGE  
PILE LAYOUT AND DETAILS

F.A.P. R.T.C.	SECTION	COUNTY	TOTAL SHEETS	SHEET NO.
361	06-00214-18-RP	KANE	451	295
CONTRACT NO. 63598			ILLINOIS/FED. AID PROJECT	

FILE NAME	USER NAME	DESIGNED	REVISED
Temp_Er_002_Pile_Layout.dgn	mgrum	JLS	-
		CHECKED	REVISED
		LRB	-
		DRAWN	REVISED
		RMG	-
		CHECKED	REVISED
		LRB	-

SHEET NO. UP-35 OF UP-52 SHEETS

X:\100000S\10074\Engineering\Documents\Phase 1\15N\_045\_3168\_1\PRR-Bridge\PLANS\Temp\_Br\_002\_Pile\_Layout.dgn 3:12:52 PM 12/13/2012