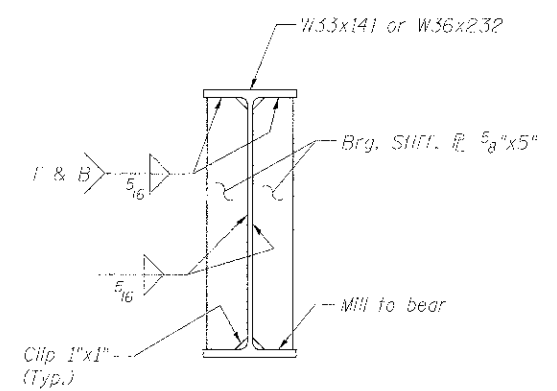
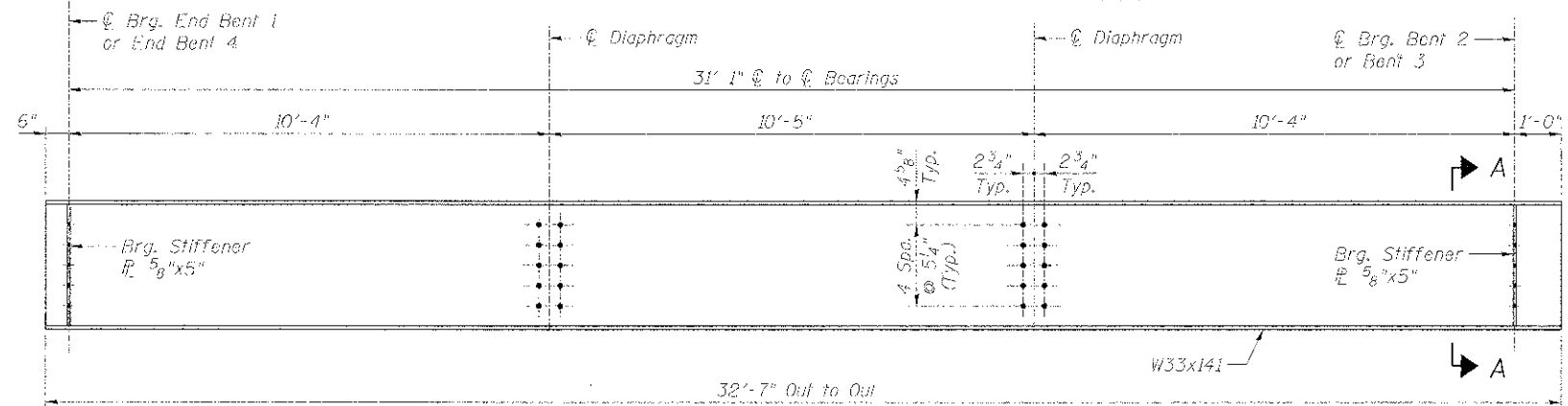


ELEVATION - BEAMS 1 THRU 5 (SPAN 2)

(5 Required)
Est. Wt. = 10,716 lbs. Each

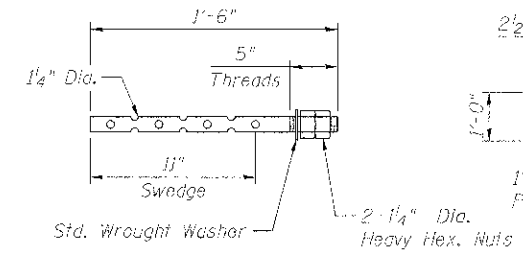


SECTION A-A



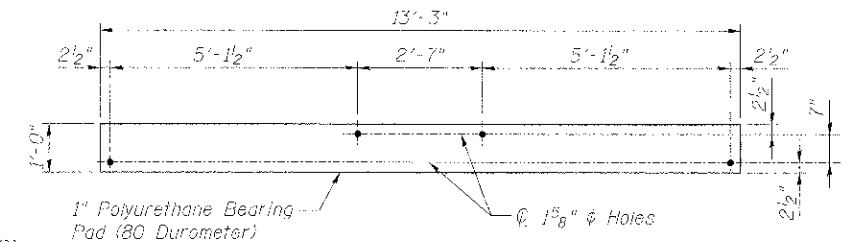
ELEVATION - BEAMS 1 THRU 5 (SPANS 1 & 3)

(10 Required)
Est. Wt. = 4,706 lbs. Each



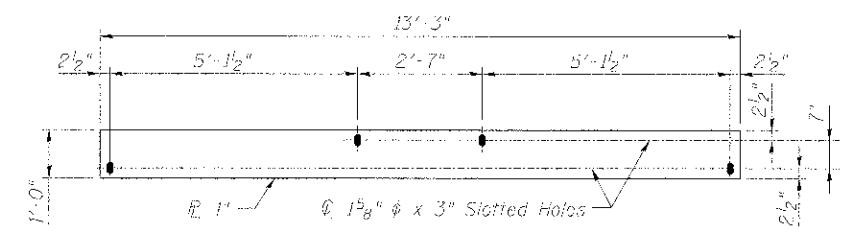
ANCHOR BOLT MK. SAB-3

24 Req'd
Est. Wt. = 8.1 LB. Each



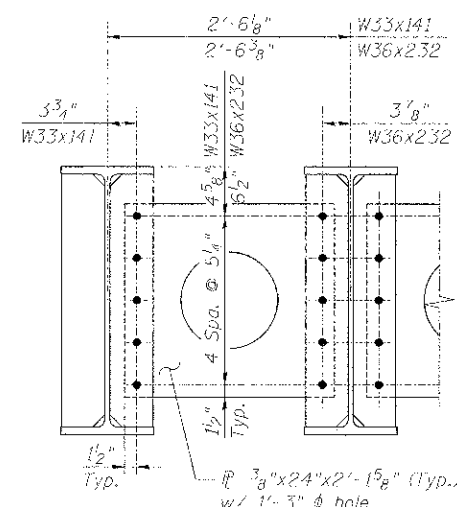
BEARING PAD MK. BP-1

(6 Required)



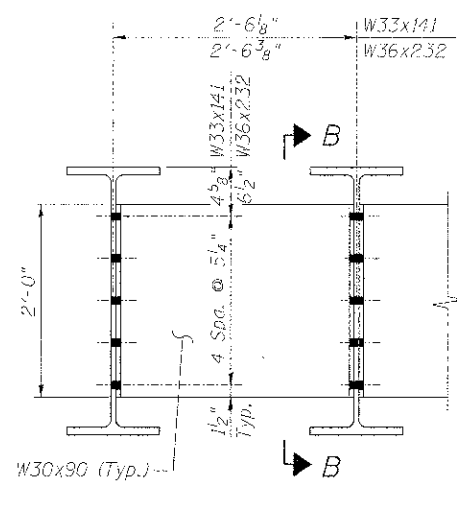
SOLE PLATE MK. SP-1E

(For Expansion Bearings)
(3 Required)
Est. Wt. = 540.6 lbs.



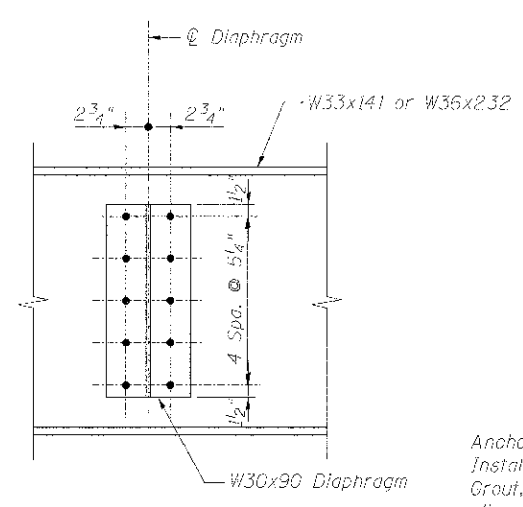
END DIAPHRAGM

(Mk. D-11)
(24 Required)
Est. Wt. = 65.33 lbs Each

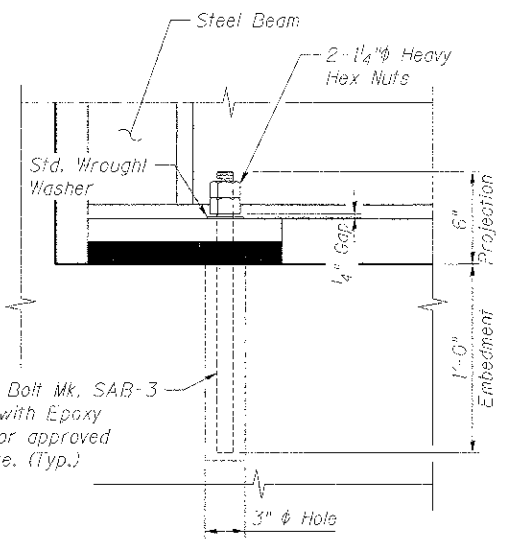


INTERIOR DIAPHRAGM

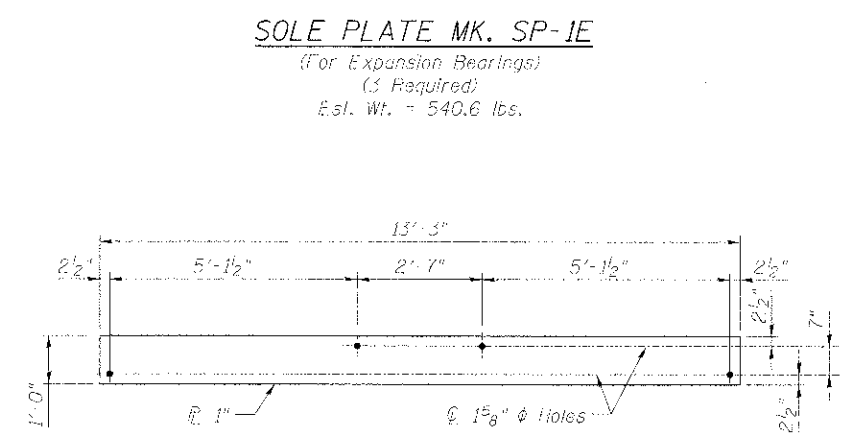
(Mk. D-10)
(28 Required)
Est. Wt. = 180 lbs. Each



VIEW B-B



ANCHOR BOLT DETAIL



SOLE PLATE MK. SP-1F

(For Fixed Bearings)
(3 Required)
Est. Wt. = 540.6 lbs.

benesch
engineers • scientists • planners
Alfred Benesch & Company
205 North Michigan Avenue, Suite 2400
Chicago, Illinois 60601
312-565-0450 Job No. 10074

| | | | |
|-------------------------------|-------------|----------------|-----------|
| FILE NAME = | USER NAME = | DESIGNED - JLS | REVISED - |
| Temp.Br.-089-Beam-Details.dwg | egrimm | CHECKED - LRB | REVISED - |
| | | DRAWN - RMG | REVISED - |
| | | CHECKED - LRB | REVISED - |
| | | | |

**STATE OF ILLINOIS
DEPARTMENT OF TRANSPORTATION**

**M.P. 37.71 BELVIDERE SUBDIVISION - TEMPORARY BRIDGE
BEAM DETAILS**

SHEET NO. UP-42 OF UP-52 SHEETS

| | | | |
|---------------------------|----------------|--------|--------------------|
| P.A.P. R.T.E. | SECTION | COUNTY | TOTAL SHEET NO. |
| 361 | 06-00214-18-RP | KANE | 451 302 |
| | | | CONTRACT NO. 63598 |
| ILLINOIS REG. AND PROJECT | | | |

X:\100005\10074\Engineering\Documents_Phase1\NSI_045_3168_3PRR-Bridge\PLANS\Temp.Br.-089-Beam-Details.dwg 3/13/2012 3:13:06 PM