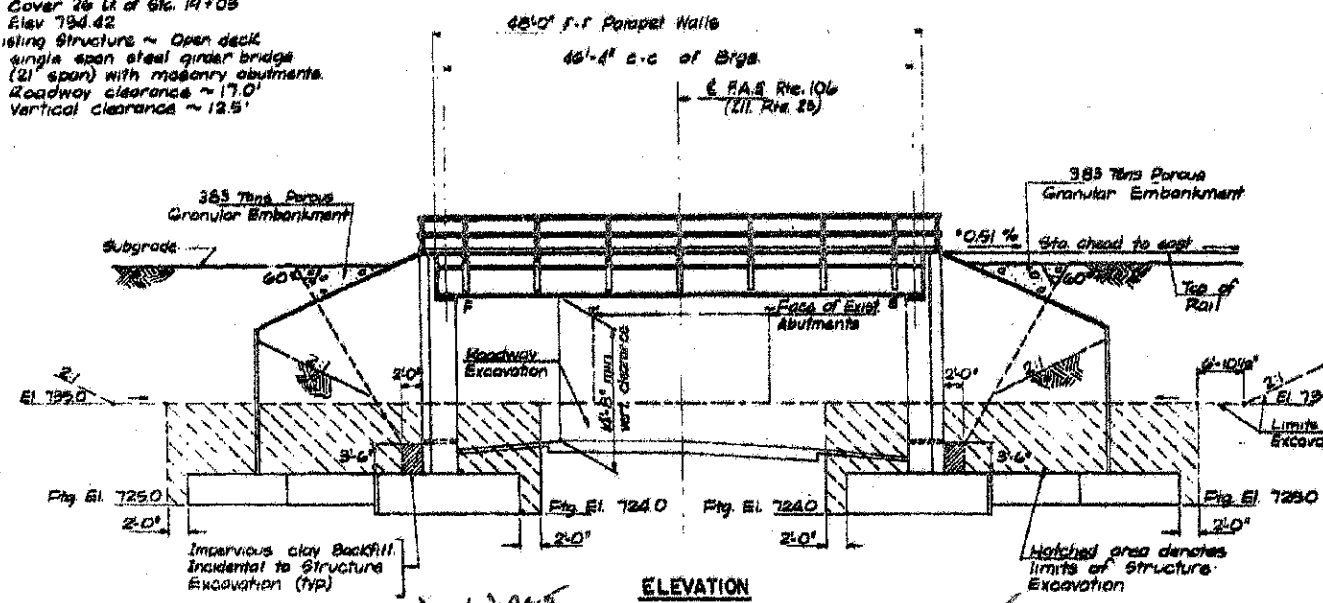
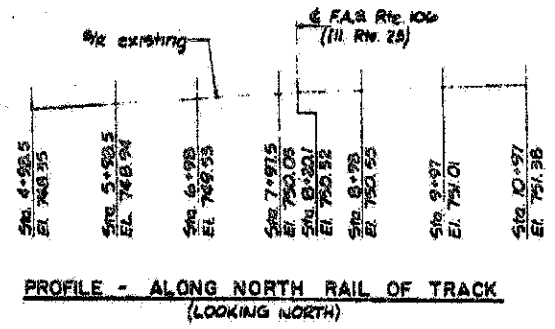


BM #2 ~ Chiseled Square on step of existing N.W. Wingwall 16' left of Sta. 19+95 Elev. 746.10  
 BM #3 ~ Center of Top of Manhole Cover 26' Lt. of Sta. 19+09 Elev. 794.42  
 Existing Structure ~ Open deck single span steel girder bridge (21' span) with masonry abutments. Roadway clearance ~ 17.0' Vertical clearance ~ 12.5'



**ELEVATION**



**PROFILE - ALONG NORTH RAIL OF TRACK (LOOKING NORTH)**

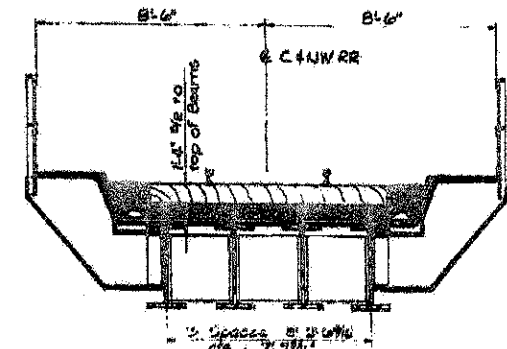
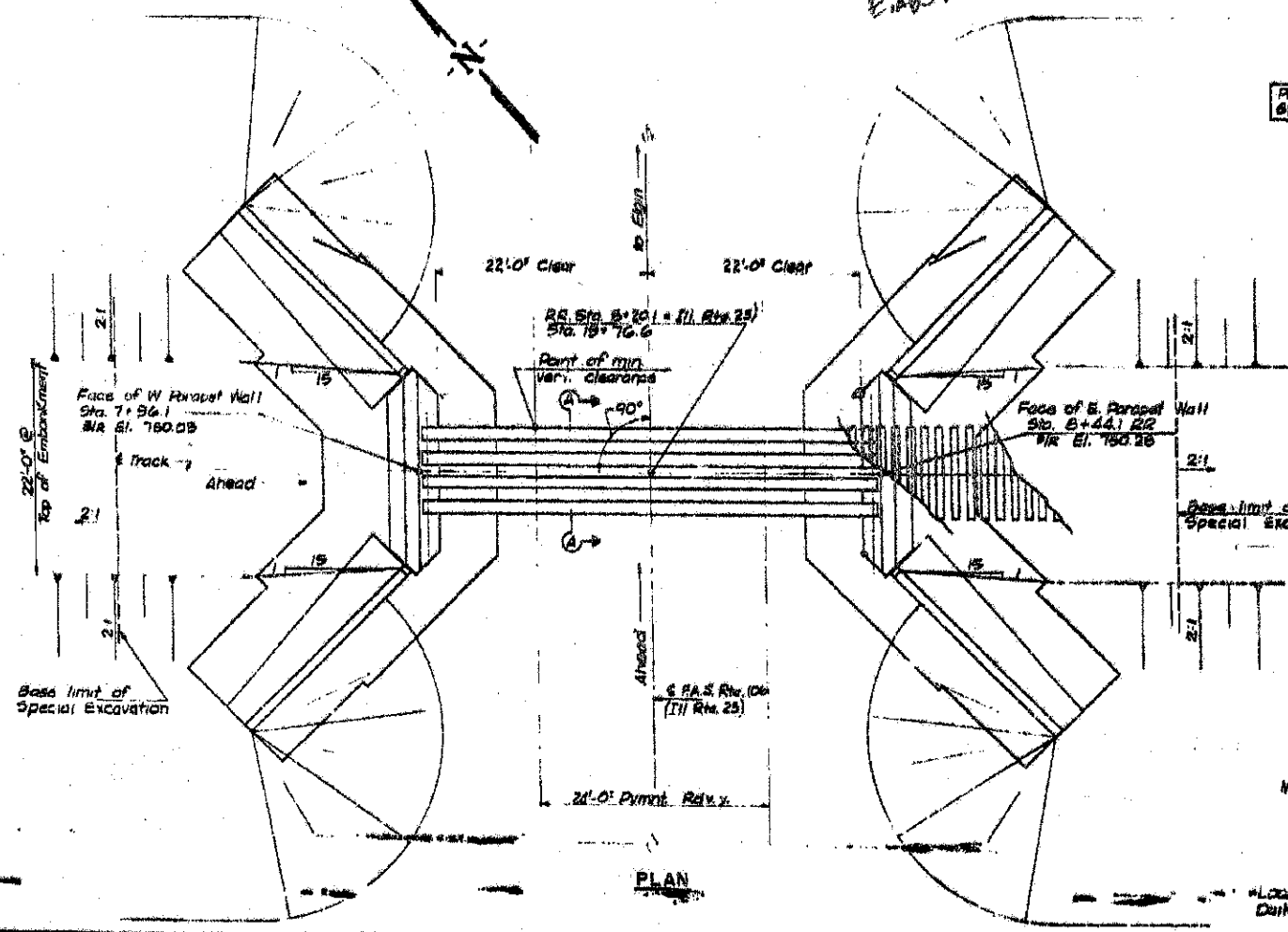


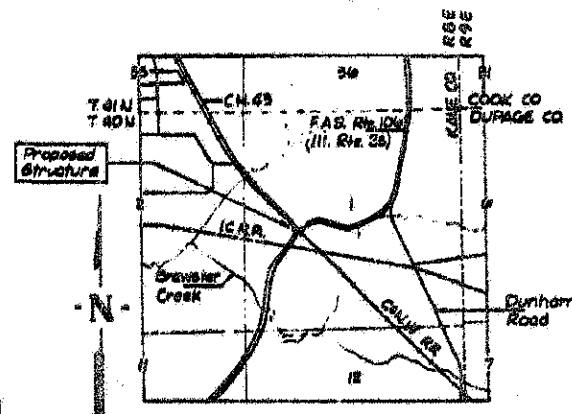
Plate Ballasted Deck with Steel Walkways, Membrane Waterproofing, and Steel Handrails

**SECTION A-A**

(SHOWING TYPICAL DECK CROSS-SECTION)



**PLAN**



**LOCATION PLAN**

**TOTAL BILL OF MATERIAL**

ITEM	SUPER	SUB	TOTAL
Porous Granular Embankment	Tons	786	786
Removal of Existing Structure	Each	1	1
Structure Excavation	Cu Yds.	1085	1085
Clays & Concrete	Cu Yds.	379	379
Membrane Waterproofing	Sq. Ft.	7183	7183
Furnishing & Erecting Structural Steel	Lump	1	1
Reinforcement Bars	Lbs.	39,078	39,078
Deck Drains	Ln. Ft.	102	102
Home Plate	Each	1	1

CEN. TRANSPORTATION CO.  
 BUILT 197 BY  
 STATE OF ILLINOIS  
 A.A.S. K.I. 106 SCL. 49-5B-1  
 STA. 19+76.6  
 LOADING E-72  
 NAME PLATE  
 See Sct. 2113

**DESIGN STRESSES**

$f_c = 1000$  p.s.i. (Sub)  
 $f_c = 75$  p.s.i. (Figs)  
 $f_t = 20,000$  p.s.i. (Reinf. & Struct)  
 $n = 10$

MAXIMUM FOOTING PRESSURES = 7160 p.s.f.

*August F. Wilkinson*  
 Illinois Structural #29149



**APPROVED**  
 FOR STRUCTURAL APPROVAL ONLY

GENERAL PLAN & ELEVATION  
 C. & N.W. RY. OVER F.A.S. RTE. 106  
 C.H. ROUTE 13 (ILL. RTE. 25)  
 SECTION 49-5B-1  
 KANE COUNTY, ILLINOIS

WALTER E. HANSON COMPANY  
 STRUCTURAL ENGINEERS  
 CONSULTANTS  
 640928  
 Oct. 19, 1972

FILE NAME	USER NAME	DESIGNED	REVISIONS
Exist./Plans/001.dgn	grm	JLS	1
		CHECKED	2
		LRR	
		DRAWN	3
		RMS	
		CHECKED	4
		LRR	
		PLOT DATE	12/13/2012

F.A.P. RTE.	SECTION	COUNTY	TOTAL SHEETS
361	06-06214-18-RP	KANE	451
			306
			CONTRACT NO. 63598

X:\100005\10074\Engineering\Documents\Phase-1\NSN\_045\_3166\_LP-RR-Bridge\PLANS\Exist\_Plans\_001.dgn 3:13:05 PM 12/13/2012