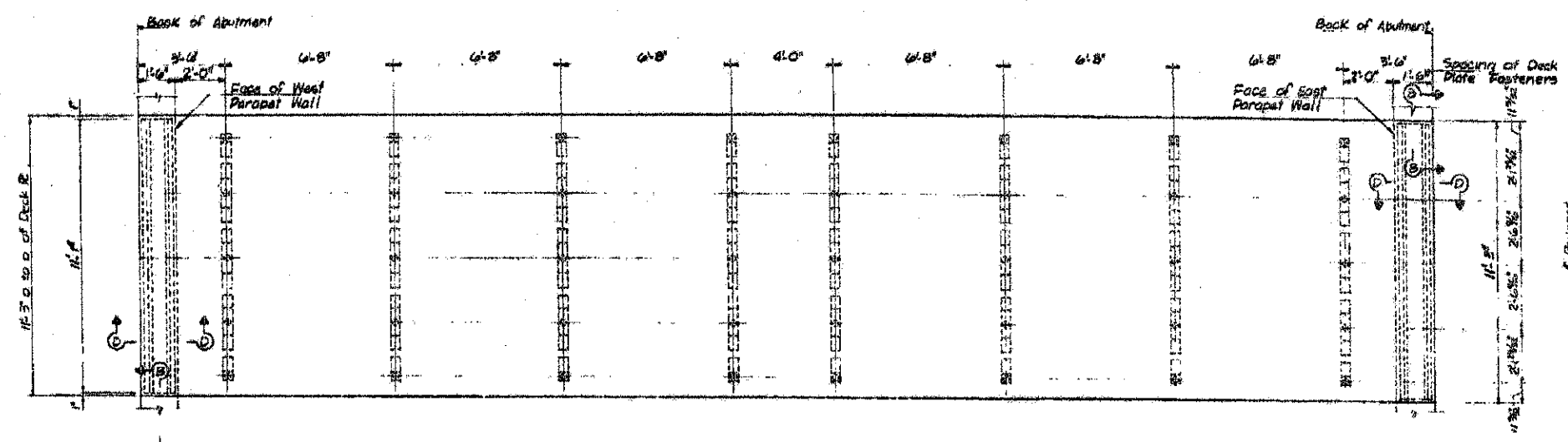
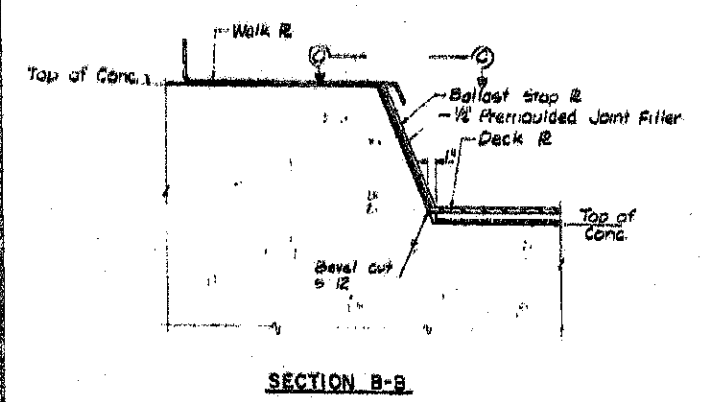


| | | | | |
|------------|------|---------|------|----|
| DATE | BY | CHECKED | DATE | BY |
| 12/19/2012 | KANE | ZE | 22 | |
| DESIGNED | | CHECKED | | |

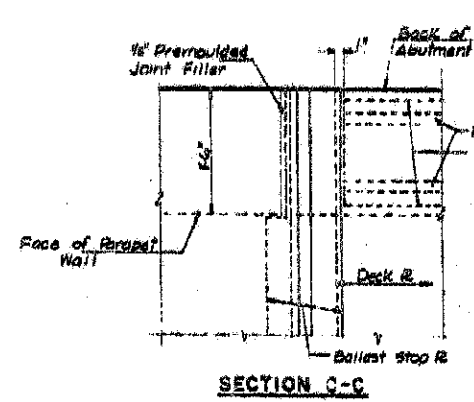
SHEET 4 OF 7



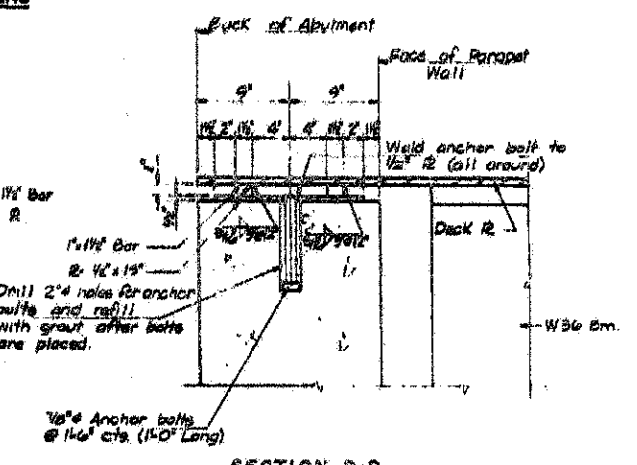
PLAN DECK PLATE AND FASTENERS



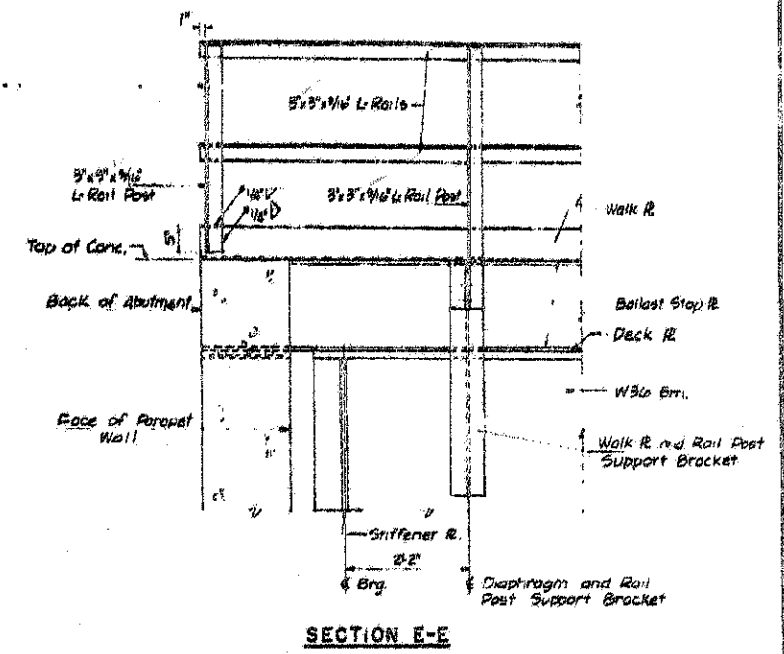
SECTION B-B



SECTION C-C



SECTION D-D



SECTION E-E

SUPERSTRUCTURE DETAILS
C. & N.W. RY. OVER IAS. RTE. 108
CH. ROUTE 13 (ILL. RTE. 25)
SECTION 49-SB-1
KANE COUNTY, ILLINOIS

| | | |
|---|----------------------|-----------------------|
| DESIGNED BY W.E.H. | CHECKED BY W.E.H. | DATE OCT. 19, 1971 |
| WALTER E. HANSON COMPANY STRUCTURAL ENGINEERS CONSULTANTS | | PROJECT NO. 64092B |
| SPRINGFIELD, ILLINOIS | | DATE OCT. 19, 1971 |

benesch
 engineers · scientists · planners
 Alfred Benesch & Company
 205 North Michigan Avenue, Suite 2400
 Chicago, Illinois 60601
 312-565-0450 Job No. 10074

STATE OF ILLINOIS
DEPARTMENT OF TRANSPORTATION

M.P. 37.71 BELVIDERE SUBDIVISION - EXISTING BRIDGE
EXISTING PLANS SHEET (4 OF 7)

| | | | | |
|---------------------------------|------------------------|-------------|--------------------|---------------|
| F.A.P. RT. 361 | SECTION 06-00214-18-RP | COUNTY KANE | TOTAL SHEETS 451 | SHEET NO. 309 |
| SHEET NO. UP-49 OF UP-52 SHEETS | | | CONTRACT NO. 63598 | |
| ILLINOIS FED. AID PROJECT | | | | |

FOR INFORMATION ONLY

P.L.L. NAME =
 USER NAME = ngrum
 PLOT SCALE =
 PLOT DATE = 12/13/2012

DESIGNED - JLS
 CHECKED - LRB
 DRAWN - RMC
 CHECKED - LRB

REVISED -
 REVISED -
 REVISED -
 REVISED -

STATE OF ILLINOIS
 DEPARTMENT OF TRANSPORTATION

M.P. 37.71 BELVIDERE SUBDIVISION - EXISTING BRIDGE
 EXISTING PLANS SHEET (4 OF 7)

SHEET NO. UP-49 OF UP-52 SHEETS

ILLINOIS FED. AID PROJECT

X:\1000005\10074\Engineering\Documents\Phase 1\15N_045_3168\UPRR\Bridges\PLANS\East_Plans_004.dgn 3:15:05 PM 12/13/2012