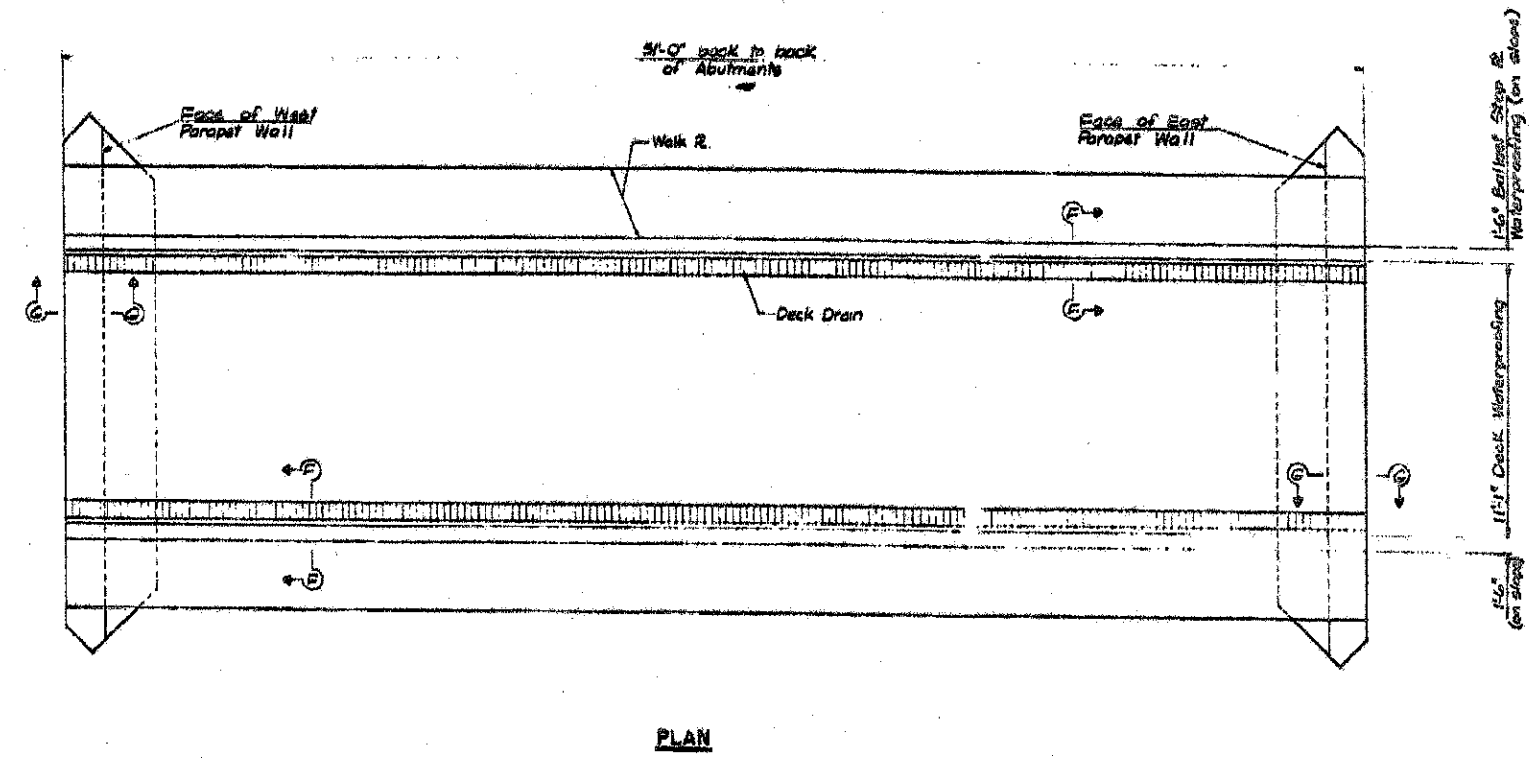


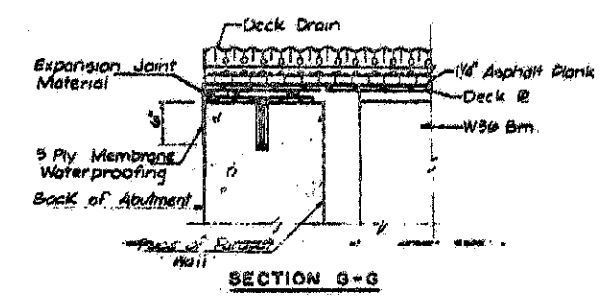
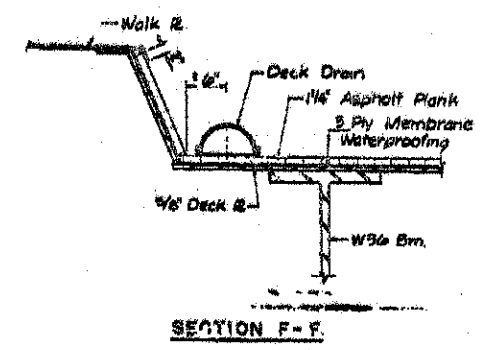
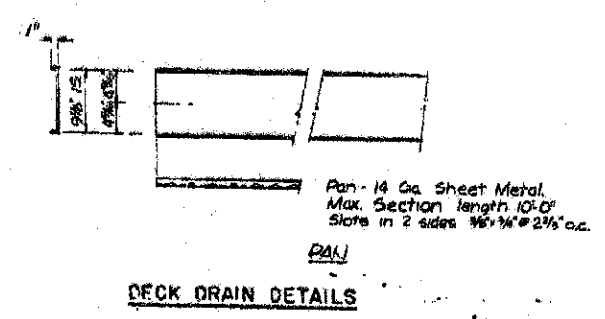
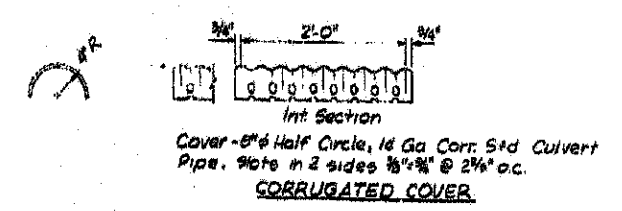
DATE	BY	REVISION	NO.	DATE
10-10-00	KANE	25	23	

SHEET 5 OF 7



BILL OF MATERIAL

Item	Quantity
Membrane Waterproofing (3-Ply membrane waterproofing-type A (1 Layer asphalt plank 1/4" thick)	7185 Sq Ft
Deck Drains (2-54" units of corr cover & pan)	102 Lin Ft



DECK WATERPROOFING AND DRAINS
C. & N.W. R. OVER FAS. RTE 106
C.H. ROUTE 13 (ILL. RTE. 25)
SECTION 49 - SB-1
KANE COUNTY, ILLINOIS

DESIGNED BY: WALTER E. H. JR.
 DRAWN BY: J. J. JONES
 CHECKED BY: J. J. JONES
 DATE: Oct 18, 1997

benesch
 engineers · scientists · planners
 Alfred Benesch & Company
 205 North Michigan Avenue, Suite 2400
 Chicago, Illinois 60601
 312-565-0450 Job No. 10074

STATE OF ILLINOIS
DEPARTMENT OF TRANSPORTATION

M.P. 37.71 BELVIDERE SUBDIVISION - EXISTING BRIDGE
EXISTING PLANS SHEET (5 OF 7)

FOR INFORMATION ONLY

FILE NAME =	USER NAME = jgramm	DESIGNED = JLS	REVISIONS =	STATE OF ILLINOIS	M.P. 37.71 BELVIDERE SUBDIVISION - EXISTING BRIDGE	F.A.P. SITE = 361	SECTION = 06-00214-18-RP	COUNTY = KANE	TOTAL SHEETS = 310
Extra L.P. encl. 085.dgn	PLOT SCALE =	CHECKED = LRB	REVISIONS =	DEPARTMENT OF TRANSPORTATION	EXISTING PLANS SHEET (5 OF 7)	361	06-00214-18-RP	KANE	251
	PLOT DATE = 12/13/2012	DRAWN = RMG	REVISIONS =						310
		CHECKED = LRB	REVISIONS =						CONTRACT NO. 63598

SHEET NO. UP-50 OF UP-52 SHEETS

ILLINOIS FED. AID PROJECT

X:\100005\10074\Engineering\Documents\Phase_1\1\SN_045_3168_LUPRR_Bridge\PLANS\Exist_Plans_0805.dgn 3:15:45 PM 12/13/2012