

Benchmark: "Aluminum Disk" set in concrete, 0.50 ± mile east of Stearns Road and Dunham Road at the south side of Stearns Road. Elev. 762.678

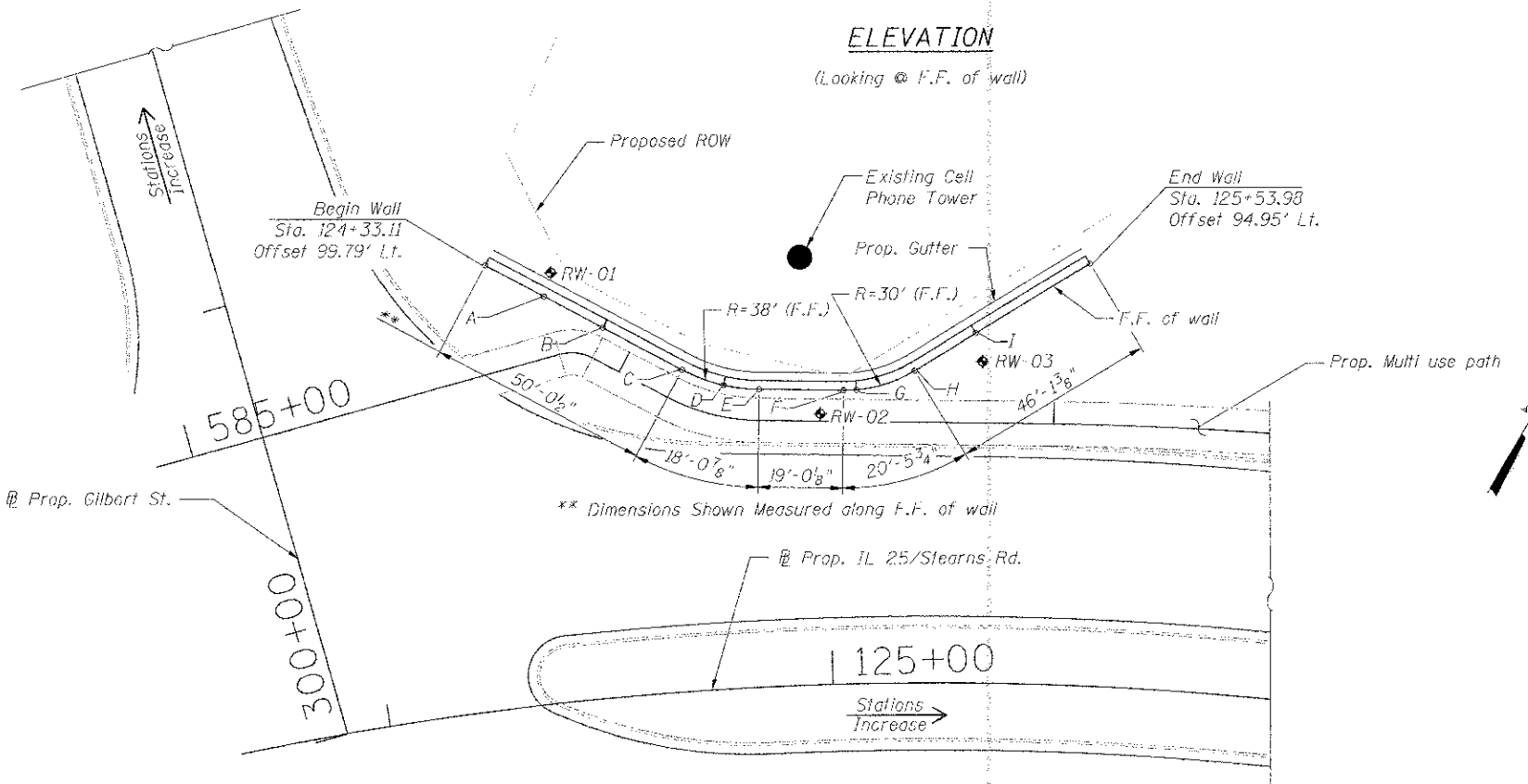
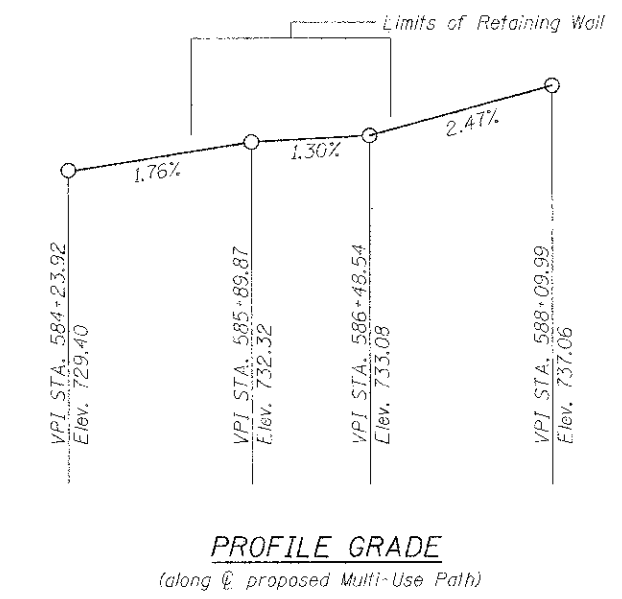
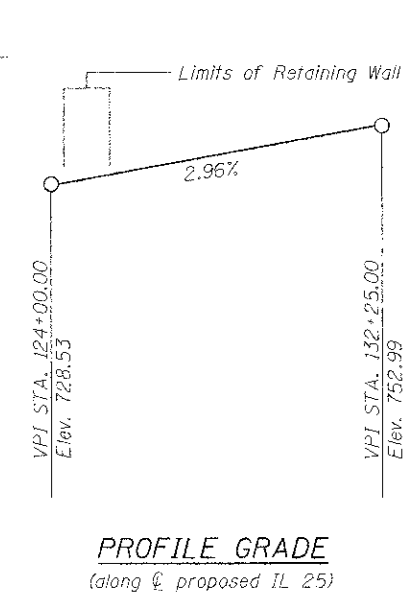
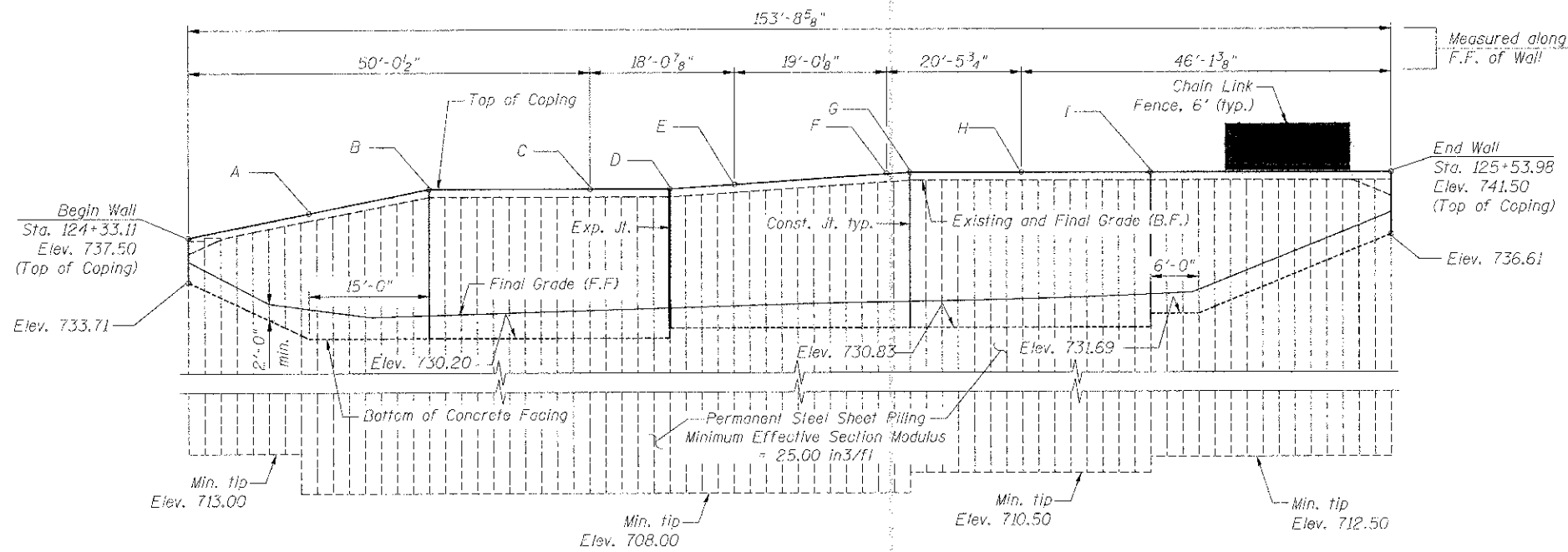
Existing Structure: None.

INDEX OF SHEETS

- SR1 General Plan and Elevation
- SR2 Retaining Wall Details
- SR3 Soil Boring Logs

DESIGN SPECIFICATIONS

2012 AASHTO LRFD Bridge Design Specifications, 6th Edition



HIGHWAY CLASSIFICATION

F.A.P. Route 361 - IL 25/Stearns Rd
Functional Class: Other Principal Arterial
ADT: 32,000 (2020)
Design Speed: 45 MPH
Posted Speed: 45 MPH

DESIGN STRESSES

FIELD UNITS

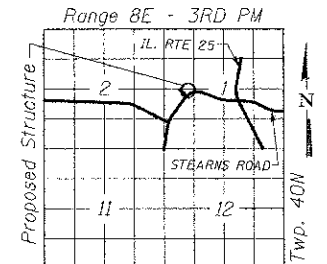
f'c = 3,500 psi
fy = 60,000 psi (Reinforcement)
fy = 50,000 psi (Sheet Piling)

CURVE DATA

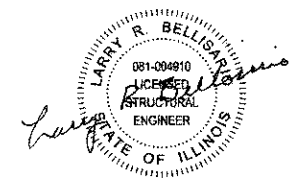
Along @ IL Rte 25
Δ = 73° 39' 40.14" (RT)
R = 780.00'
T = 584.16'
L = 1002.79'
E = 194.50'
S.E. = 0.02 1/1"
P.C. STA. = 122+11.16
P.T. STA. = 132+13.95
P.I. STA. = 127+95.32
SE Attained Sta. 120+85.36 to Sta. 122+40.75
SE Removed Sta. 131+84.37 to Sta. 133+61.95

WALL DATA

Location	Station	T/Coping Elevation	Offset
A	124+44.18	739.00	91.38' Lt.
B	124+55.15	740.50	83.15' Lt.
C	124+70.85	740.50	72.43' Lt.
D	124+79.18	740.50	68.40' Lt.
E	124+86.52	740.77	67.03' Lt.
F	125+04.01	741.40	66.13' Lt.
G	125+06.67	741.50	66.17' Lt.
H	125+18.75	741.50	70.28' Lt.
I	125+31.29	741.50	78.70' Lt.



APPROVED
For Structural Adequacy Only
Michael P. ...
Engineer of Bridges & Structures



EXPIRATION DATE: 11-30-2014
DATE: 12-14-2012

NOTES:

1. Offsets measured from @ Prop. IL 25/Stearns Rd to the front face of the wall.
2. F.F. - Front Face
B.F. - Back Face

I certify that to the best of my knowledge, information and belief, this bridge design is structurally adequate for the design loading shown on the plans. The design is an economical one for the style of structure and complies with requirements of the current AASHTO Standard Specifications for Highway Bridges.

GENERAL PLAN & ELEVATION
RETAINING WALL
IL 25/STEARNS ROAD
F.A.P. 361 - SEC. 06-00214-18-RP
KANE COUNTY
STATION 124+33.11 TO 125+53.98
STRUCTURE NO. 045-WQ16

benesch
engineers · scientists · planners

Alfred Benesch & Company
205 North Michigan Avenue, Suite 2400
Chicago, Illinois 60601
312-565-0460 Job No. 10074

FILE NAME =	USER NAME =	DESIGNED =	REVISD =
001_Retaining_Wall_UPL.den	rgm	JJC	-
	PLT SCALE =	CHECKED =	REVISD =
		LRB	-
	PLT DATE = 1/5/2013	DRAWN =	REVISD =
		JJC	-
		CHECKED =	REVISD =
		LRB	-

STATE OF ILLINOIS
DEPARTMENT OF TRANSPORTATION

SHEET NO. SR1 OF SR3 SHEETS

F.A.P. RTE.	SECTION	COUNTY	TOTAL SHEETS	SHEET NO.
361	06-00214-18-RP	KANE	451	313
CONTRACT NO. 63598			ILLINOIS FED. AID PROJECT	

X:\100005\10074\Engineering\Documents\Phase II\Retaining-Wall\Plans\001-Retaining-Wall-CPE.dgn 8:24:07 AM 1/5/2013