

GENERAL NOTES

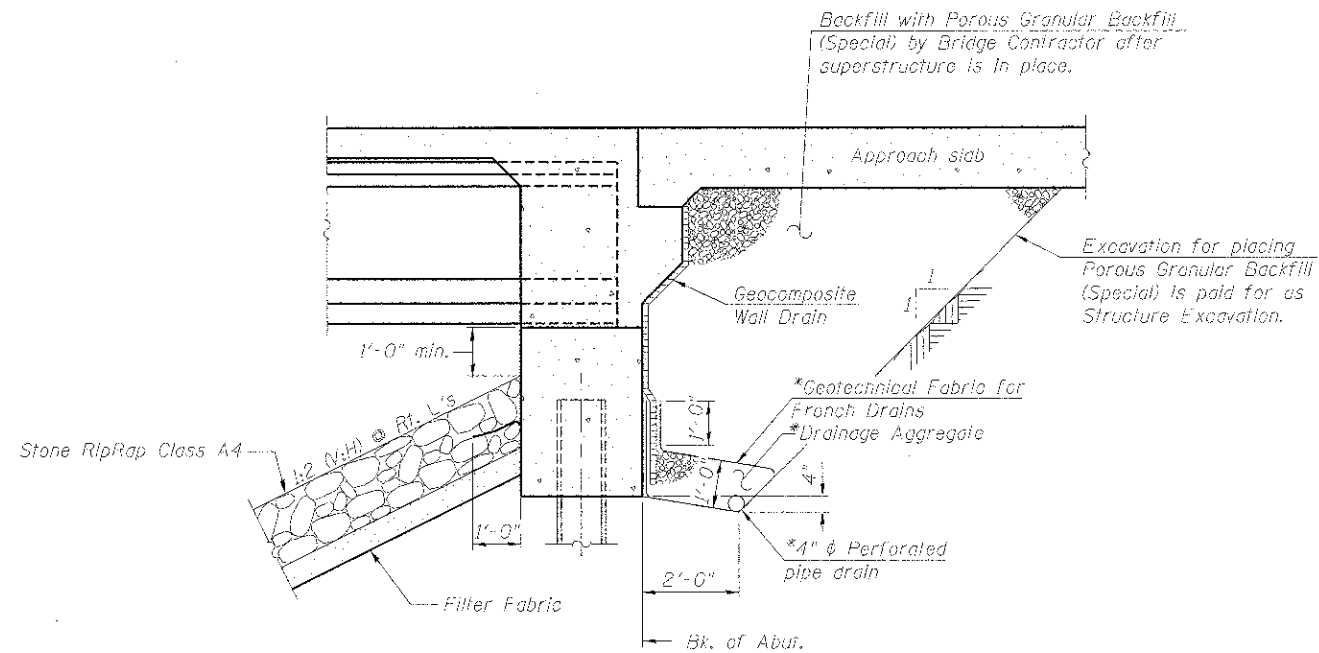
1. Reinforcement bars shall conform to the requirements of ASTM A 706 Gr 60.
2. Reinforcement bars designated (E) shall be epoxy coated.
3. Layout of slope protection system may be varied to suit ground conditions in the field as directed by the Engineer.
4. The embankment configuration shown shall be the minimum that must be placed and compacted prior to construction of the abutments.
5. The Contractor shall drive test piles to 110% of the nominal required bearing specified in production locations at substructures specified or approved by the Engineer before ordering the remainder of piles.
6. Slipforming of the parapets is not allowed.
7. No in-stream work or work that could potentially impact the Fox River can occur between March 1, 2013 and June 7, 2013. In-stream work includes the East Branch of Brewster Creek.
8. All disturbed areas and work areas must be isolated from creek flows at all times. The diversion/isolation of the creek flows must be constructed from non-erodible materials. The KDSWCD must be in agreement with overall exact method of diversion/isolation prior to the commencement of construction (Contact KDSWCD 630-584-7951 x3).
9. No work shall be performed in flowing water and no equipment shall enter Brewster Creek without approval of the KDSWCD or the Army Corps of Engineers. Work in and near the critical areas should be isolated from concentrated flows or stream flow. The stream banks shall be stabilized at the end of each day. Once work in this area begins, priority shall be given to the completion of the work and final stabilization of all disturbed areas.

INDEX OF SHEETS

SB1 of SB19	General Plan and Elevation
SB2 of SB19	General Notes, Index of Sheets and Total Bill of Material
SB3 of SB19	Foundation Plan
SB4 of SB19	Deck Elevation Plan
SB5 of SB19	Top of Slab Elevations
SB6 of SB19	Top of Approach Slab Elevations
SB7 of SB19	Deck Reinforcement Plan and Cross Section
SB8 of SB19	Diaphragm Section and Elevation
SB9 of SB19	Parapet Elevation and Details
SB10 of SB19	Framing Plan and Moment Table
SB11 of SB19	48" PPC I-Beam Elevation
SB12 of SB19	48" PPC I-Beam Details
SB13 of SB19	West Abutment - Plan and Elevation
SB14 of SB19	East Abutment - Plan and Elevation
SB15 of SB19	Pile Details
SB16 of SB19	Bar Splicer Assembly and Mechanical Splicer Details
SB17 of SB19	Bridge Approach Slab Details (1 of 2)
SB18 of SB19	Bridge Approach Slab Details (2 of 2)
SB19 of SB19	Soil Boring Logs

TOTAL BILL OF MATERIAL

ITEM	UNIT	SUPER	SUB	TOTAL
Porous Granular Embankment, Special	Cu. Yd.		177	177
Stone Riprap Class A4	Sq. Yd.		399	399
Filter Fabric	Sq. Yd.		457	457
Structure Excavation	Cu. Yd.		18	18
Concrete Structures	Cu. Yd.		50.7	50.7
Concrete Superstructure	Cu. Yd.	200.3		200.3
Bridge Deck Grooving	Sq. Yd.	379		379
Concrete Encasement	Cu. Yd.		5.0	5.0
Protective Coat	Sq. Yd.	497		497
Furnishing and Erecting Precast Prestressed Concrete I-Beams, 48 in.	Foot	274		274
Reinforcement Bars, Epoxy Coated	Pound	43,640	9,730	53,370
Bar Splicers	Each		60	60
Furnishing Steel Piles, HP12x53	Foot		882	882
Driving Piles	Foot		882	882
Test Pile, HP12x53	Each		2	2
Pile Shoes	Each		14	14
Name Plates	Each	1		1
Geocomposite Wall Drain	Sq. Yd.		94	94
Pipe Underdrains for Structures 4"	Foot		130	130



SECTION THRU INTEGRAL ABUTMENT
(Horiz. dim. @ Rt. L's)

*Included in the cost of Pipe Underdrains for Structures.

Note:
All drainage system components shall extend to 2'-0" from the end of each wingwall except an outlet pipe shall extend until intersecting with the side slopes. The pipes shall drain into *concrete headwalls. (See Article 601.05 of the Standard Specifications and Highway Standard 601101).

FILE NAME = 6452833-202-notes.dgn	USDR NAME = rgrimm	DESIGNED = RJT	REVISED =
		CHECKED = AJK	REVISED =
		DRAWN = RMG	REVISED =
		CHECKED = AJK	REVISED =
			REVISED =

F.A.P. RTE.	SECTION	COUNTY	TOTAL SHEETS	SHEET NO.
361	06-00214-18-RP	KANE	451	317
				CONTRACT NO. 63598