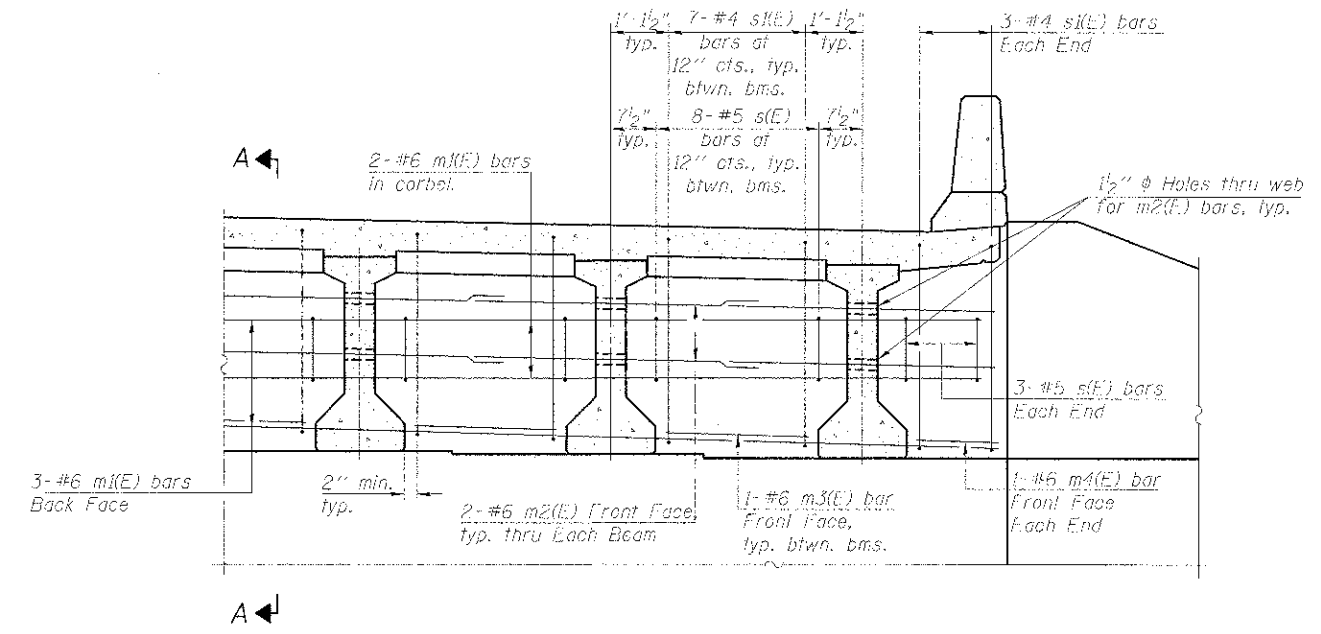


Beam ends shall be set on an initial 1/2" min. grout (2:1 sand and portland cement, very dry mix) to provide full bearing. Any excess grout squeezed out from under the beam shall be removed. Cost included with Concrete Structures.

SECTION A-A
Dimensions at right angles to abutment, except as shown.



DIAPHRAGM ELEVATION AT ABUTMENT

MIN. BAR LAP
#6 bar - 3'-4"

NOTES:

1. Reinforcement bars in diaphragm are billed with superstructure on sheet SB9.
2. Concrete in diaphragm is included with Concrete Superstructure on sheet SB9.
3. For details of bars s(E) and s(E) see sheet SB9.
4. The s(E) and s(E) bars shall be placed parallel to the beams. Spacing for these bars shall be at right angles to the beams.

FILE NAME = 0452033-208-dk.dwg	USER NAME = rjg	DESIGNED = Rjg	REVISED =
		CHECKED = AJK	REVISED =
		DRAWN = RMC	REVISED =
		CHECKED = AJK	REVISED =

F.A.P. RTE. 361	SECTION 06-00214-18-RP	COUNTY KANE	TOTAL SHEETS 451	SHEET NO. 323
SHEET NO. S88 OF S819 SHEETS			CONTRACT NO. 63598	
ILLINOIS FED. AID PROJECT				

x:\10000s\10074\Engineer\Phase II\SN_045_2033\Brewster_Creek\Plans\0452033-008-dk.dwg
 2:34:45 PM
 12/13/2012