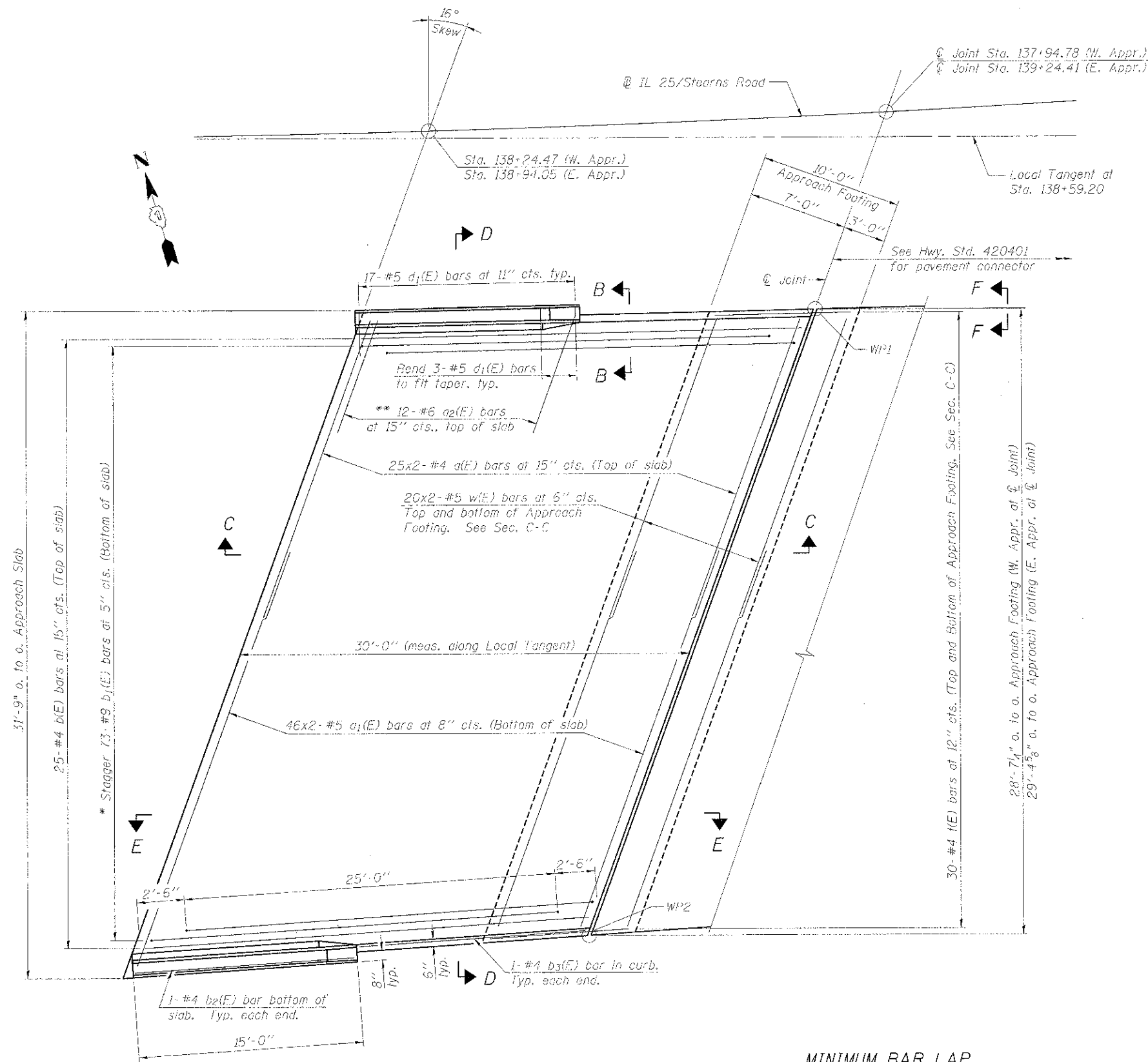


Notes:
See Sheet SB18 for Sections C-C & D-D and View E-E.
a(E) and a₁(E) bar spacings measured along Local Tangent.

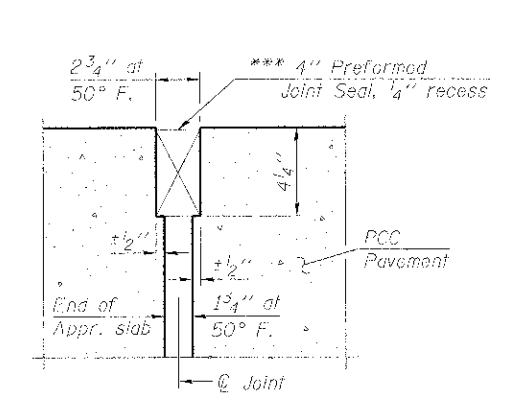


PLAN

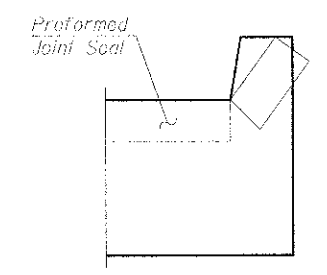
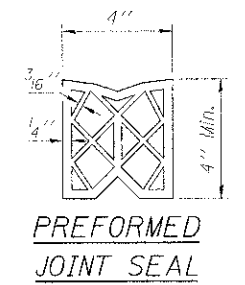
* Tilt #9 b₁(E) bars as required to maintain clearance.
** Space between a₁(E) bars, typ. each parapet.

MINIMUM BAR LAP
(Approach Slab)
#4 bar = 2'-7"
#5 bar = 3'-3"

*** Cost included with Concrete Superstructure.

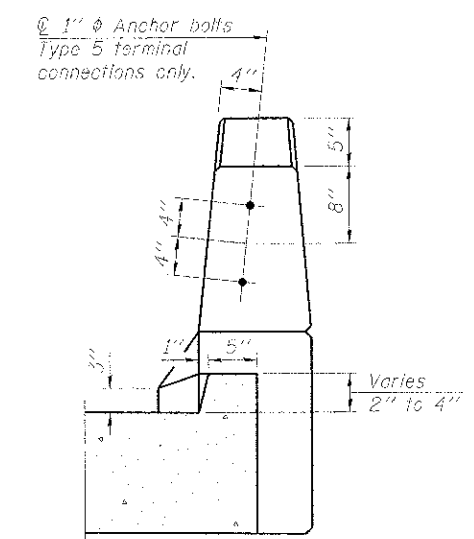


DETAIL A



VIEW F-F

Angle Preformed Joint Seal at 45° at curbs when req'd for drainage.



VIEW B-B

WORK POINTS

Point	Appr.	Station	Offset
WP1	West	137+91.87	12.50' Rt.
WP2	West	137+85.34	41.50' Rt.
WP1	East	139+20.19	12.50' Rt.
WP2	East	139+10.71	41.50' Rt.

benesch
engineers · scientists · planners
Alfred Benesch & Company
205 North Michigan Avenue, Suite 2400
Chicago, Illinois 60601
312-565-0450 Job No. 10074

FILE NAME =	USER NAME = pgr1mm	DESIGNED - MFH	REVISED -
PLT SCALE =	PLT DATE = 12/13/2012	CHECKED - AJK	REVISED -
		DRAWN - RMO	REVISED -
		CHECKED - AJK	REVISED -

STATE OF ILLINOIS
DEPARTMENT OF TRANSPORTATION

BRIDGE APPROACH SLAB DETAILS (1 OF 2)
IL 25/STEARNS RD EB OVER BREWSTER CREEK STRUCTURE NO. 045-2033
SHEET NO. SB17 OF SB19 SHEETS

F.A.P. RTE. 361	SECTION 06-0021-18-RP	COUNTY KANE	TOTAL SHEETS 45	SHEET NO. 332
ILLINOIS FED. AID PROJECT			CONTRACT NO. 63598	

x:\102000s\102014\Engineer\ing_Documents_Phase_1\SN_045-2033_Brewster_Creek\Plans\0452033-017-ecpr1.dgn
 2:34:55 PM
 12/13/2012