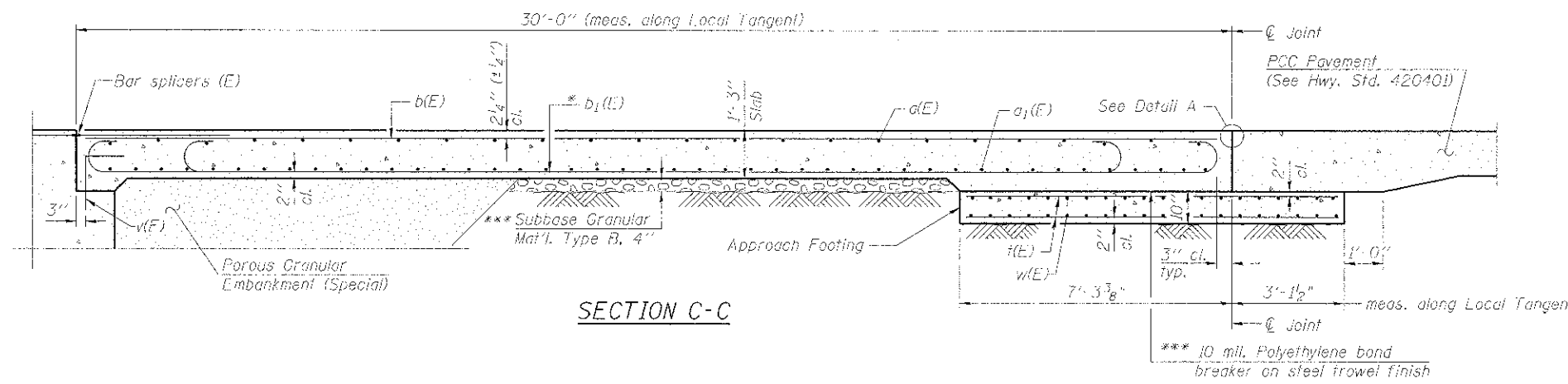
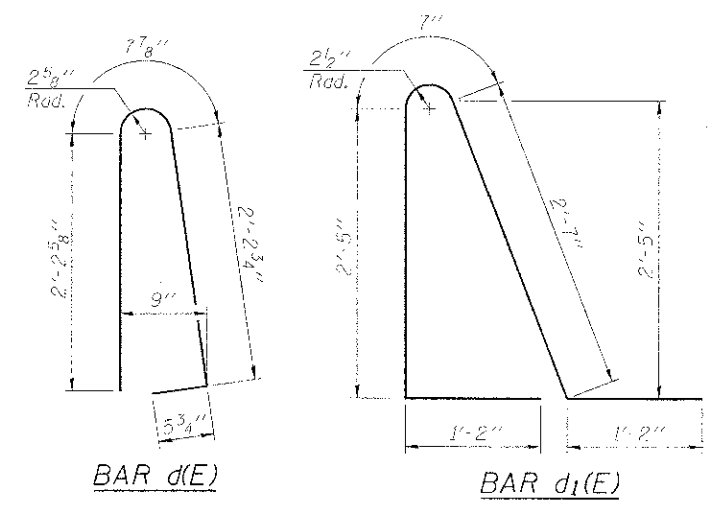


Notes:
 See Sheet SB17 for Detail A and View B-B.
 Approach slab and parapet concrete shall be paid for as Concrete Superstructure.
 Approach footing concrete shall be paid for as Concrete Structures.
 Reinforcement shall be paid for as Reinforcement Bars, Epoxy Coated.
 For v(E) bar details, see Sheet SB2.
 The approach footing maximum applied service bearing pressure (Qmax) = 2.0 ksf.
 For bar splicer details, see Sheet SB15.
 Cost of excavation for approach footing included with Concrete Structures.
 For Porous Granular Embankment (Special) and drainage treatment details, see Sheet SB2.
 For additional parapet details, see Sheet SB9.



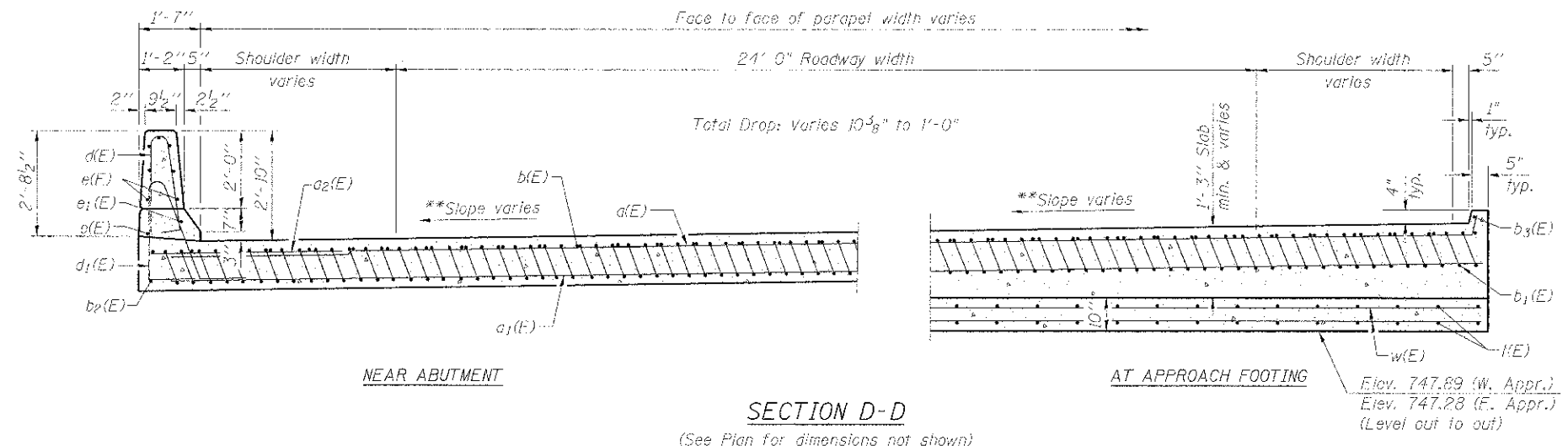
SECTION C-C



BAR d(E)

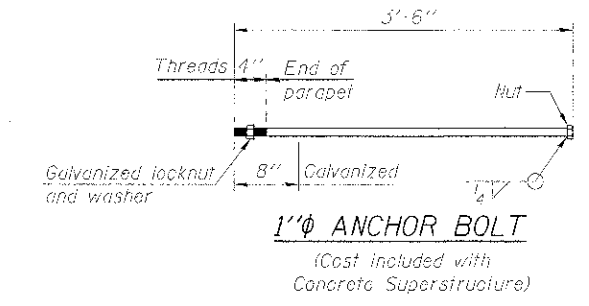
BAR d1(E)

* T1# #9 b1(E) bars as required to maintain clearance.
 ** Varies from 3.07% to 3.50% on the W. Appr. and is a constant 3.50% on the E. Appr. See Civil Plans for superelevation transition.
 *** Cost included with Concrete Superstructure.



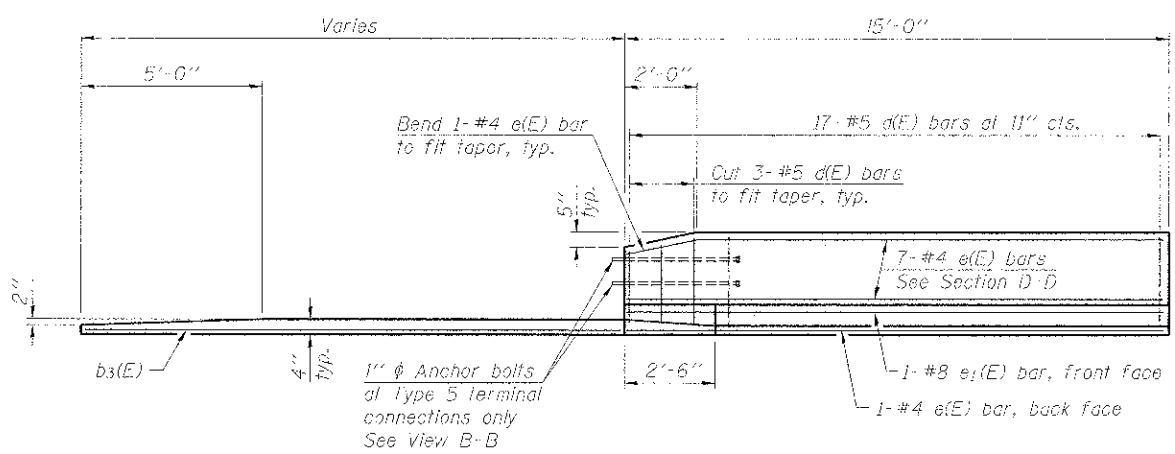
SECTION D-D

(See Plan for dimensions not shown)



1" ANCHOR BOLT

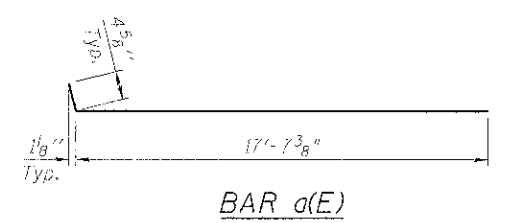
(Cost included with Concrete Superstructure)



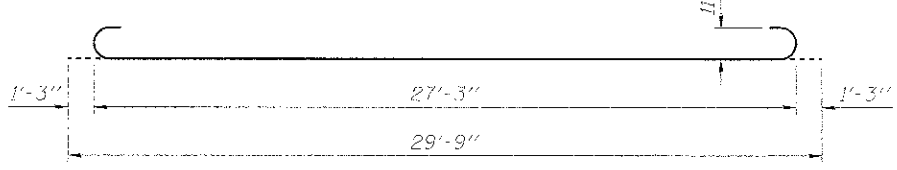
VIEW E-E

TWO APPROACHES
 BILL OF MATERIAL

Bar	No.	Size	Length	Shape
a(E)	100	#4	18'-0"	—
a1(E)	184	#5	18'-0"	—
a2(E)	48	#6	6'-6"	—
b(E)	50	#4	29'-8"	—
b1(E)	116	#9	29'-9"	—
b2(E)	4	#4	14'-8"	—
b3(E)	4	#4	15'-0"	—
d(E)	68	#5	5'-7"	—
d1(E)	68	#5	7'-11"	—
e(E)	32	#4	14'-5"	—
e1(E)	4	#8	14'-5"	—
f(E)	120	#4	10'-0"	—
w(E)	160	#5	18'-0"	—
Concrete Superstructure		Cu. Yd.	99.9	
Concrete Structures		Cu. Yd.	18.7	
Reinforcement Bars, Epoxy Coated		Pound	26,200	



BAR a(E)



BAR b1(E)

benesch
 engineers · scientists · planners
 Alfred Benesch & Company
 205 North Michigan Avenue, Suite 2400
 Chicago, Illinois 60601
 312-685-0450 Job No. 10074

FILE NAME: 0452033-218-app-2.dgn
 USER NAME: rgrimm
 PLOT SCALE: 1/8" = 1'-0"
 PLOT DATE: 12/13/2012

DESIGNED - MPH
 CHECKED - AJK
 DRAWN - RMG
 CHECKED - AJK

REVISED -
 REVISED -
 REVISED -
 REVISED -

STATE OF ILLINOIS
 DEPARTMENT OF TRANSPORTATION

BRIDGE APPROACH SLAB DETAILS (2 OF 2)
 IL 25/STEARNS RD EB OVER BREWSTER CREEK STRUCTURE NO. 045-2033

SHEET NO. SB18 OF SB19 SHEETS

F.A.P. RITE: 361
 SECTION: 06-C0214-18-RP
 COUNTY: KANE
 TOTAL SHEETS: 451
 SHEET NO.: 333
 CONTRACT NO.: 63598
 ILLINOIS FED. AID PROJ. #ST

x:\102000s\12074\Engineering- Documents\Phase I\11\SN_045-2033-Brewster_Creek_VP_Lens_V0452033_018-app-2.dgn 2/3/2012 2:34:57 PM