

STATE OF ILLINOIS
DEPARTMENT OF TRANSPORTATION
DIVISION OF HIGHWAYS
PLANS FOR PROPOSED
FEDERAL AID HIGHWAY

MUN. RTE.	SECTION	COUNTY	TOTAL SHEETS	SHEET NO.
1007	09-00021-00-SW	WILL	22	1
G-40-003-11		ILLINOIS	CONTRACT NO. 63772	

INDEX OF SHEETS

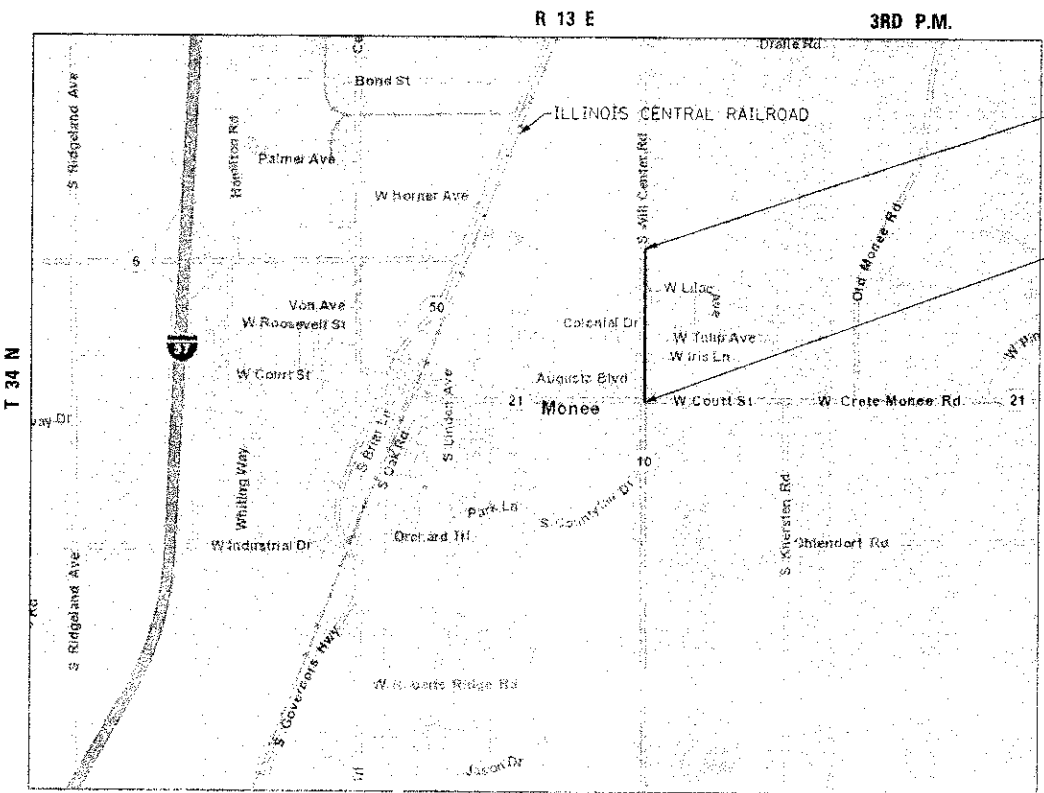
COVER SHEET/INDEX OF SHEETS	1
GENERAL NOTES/HIGHWAY STANDARDS	2
SUMMARY OF QUANTITIES	3 - 6
TYPICAL SECTIONS	7
ALIGNMENT TIES AND BENCHMARKS	8
PLAN AND PROFILES	9 - 13
IDOT DISTRICT 1 STANDARDS	14 - 17
CROSS SECTIONS	18 - 22

WILL CENTER ROAD
WEST COURT STREET TO
575 FEET NORTH OF LILAC AVENUE
SIDEWALK IMPROVEMENTS
SECTION 09-00021-00-SW
PROJECT SRTS-4009(085)
VILLAGE OF MONEE
WILL COUNTY
JOB NO. C-40-003-11



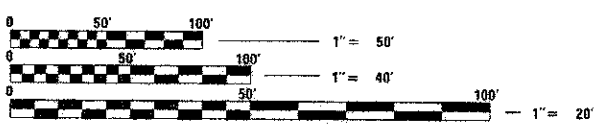
VILLAGE OF MONEE
 POLICE DEPARTMENT (708) 534-8541
 FIRE DEPARTMENT (708) 534-8772

POSTED SPEED LIMIT
 WILL CENTER ROAD = 25 MPH



END IMPROVEMENTS
STA. 24 + 98.76

BEGIN IMPROVEMENTS
STA. 0 + 00.00



FULL SIZE PLANS HAVE BEEN PREPARED USING STANDARD ENGINEERING SCALES. REDUCED SIZED PLANS WILL NOT CONFORM TO STANDARD SCALES. IN MAKING MEASUREMENTS ON REDUCED PLANS, THE ABOVE SCALES MAY BE USED.

J.U.L.I.E.
JOINT UTILITY LOCATION INFORMATION FOR EXCAVATION
 1-800-892-0123
 OR 811

LOCATION MAP
NO SCALE

GROSS PROJECT LENGTH: 2,499.00 FEET = 0.473 MILES
 NET PROJECT LENGTH: 2,499.00 FEET = 0.473 MILES

PRINTED BY THE AUTHORITY
OF THE STATE OF ILLINOIS

STATE OF ILLINOIS
DEPARTMENT OF TRANSPORTATION
DIVISION OF HIGHWAYS

APPROVED December 14, 2012
[Signature]
 VILLAGE OF MONEE - VILLAGE ADMINISTRATOR

PASSED JANUARY 3, 2013
[Signature]
 DISTRICT 1 ENGINEER OF LOCAL ROADS AND STREETS

RELEASING FOR BID BASED ON LIMITED REVIEW January 3, 2013
[Signature]
 DEPUTY DIRECTOR OF HIGHWAYS, REGION 1 ENGINEER

SA
STRAND
 ASSOCIATES

1170 SOUTH HOBOLT ROAD
 JOLIET, ILLINOIS 60431
 (815) 744-4200
 IDFPR NO. 184-001273

PROGRAM AND OFFICE ENGINEER: CHARLES F. RIDDLE, P.E., (847) 705-4406, SCHAUMBURG, IL
 CONSULTANT: STRAND ASSOCIATES INC. (815) 744-4200

CONTRACT NO. 63772

DATE: 12/12/2012

GENERAL NOTES

1. ALL CONSTRUCTION SHALL BE DONE ACCORDING TO THE STATE OF ILLINOIS "STANDARD SPECIFICATIONS FOR ROAD AND BRIDGE CONSTRUCTION" ADOPTED JAN. 1, 2012, THE "SUPPLEMENTAL SPECIFICATIONS AND RECURRING SPECIAL PROVISIONS" ADOPTED JANUARY 1, 2013, THE DETAILS IN THESE PLANS, AND THE SPECIAL PROVISIONS INCLUDED IN THE CONTRACT DOCUMENTS.
2. THE SCALE SHOWN ON THE DRAWINGS APPLIES ONLY TO FULL SIZE PLANS AND NOT TO THE REDUCED SIZE PLANS. DO NOT SCALE PLANS FOR CONSTRUCTION DIMENSIONS.
3. ANY REFERENCE TO STANDARDS THROUGHOUT THE PLANS OR SPECIAL PROVISIONS SHALL BE INTERPRETED TO BE THE LATEST STANDARDS OF THE ILLINOIS DEPARTMENT OF TRANSPORTATION.
4. IT SHALL BE THE CONTRACTOR'S RESPONSIBILITY TO VERIFY ALL DIMENSIONS AND CONDITIONS EXISTING IN THE FIELD PRIOR TO CONSTRUCTION AND ORDERING OF MATERIALS.
5. THE LOCATION AND ELEVATION OF THE VARIOUS UNDERGROUND UTILITIES AS SHOWN ON THE DRAWINGS ARE APPROXIMATE. THE CONTRACTOR SHALL USE SPECIAL CARE WHEN CONDUCTING CONSTRUCTION OPERATIONS NEAR THEM AND IS RESPONSIBLE FOR ANY DAMAGE CAUSED.
6. THE CONTRACTOR SHALL NOTIFY THE AGENCIES AND UTILITIES AT LEAST 10 DAYS PRIOR TO ANY CONSTRUCTION IN THE AREA AND SHALL COMPLY WITH ALL RESTRICTIONS FOR EQUIPMENT MOVEMENTS AND CLEARANCES IN REGARDS TO THEIR FACILITIES.
7. 48 HOURS PRIOR TO THE START OF ANY EXCAVATION, THE CONTRACTOR SHALL CALL J.U.L.I.E. AND THE VILLAGE OF MONEE FOR VERIFICATION OF ALL UTILITY LOCATIONS IN THE FIELD.
8. THE CONTRACTOR SHALL COORDINATE WITH ALL ABOVE AND UNDERGROUND UTILITY COMPANIES IF UTILITIES NEED TO BE RELOCATED.
9. THE CONTRACTOR SHALL ENSURE ALL PERMITS HAVE BEEN OBTAINED PRIOR TO COMMENCEMENT OF WORK.
10. WHERE SECTION OR SUBSECTION MONUMENTS ARE ENCOUNTERED, THE ENGINEER SHALL BE NOTIFIED BEFORE SUCH MONUMENTS ARE REMOVED. THE CONTRACTOR SHALL PROTECT AND CAREFULLY PRESERVE ALL PROPERTY MARKER MONUMENTS UNTIL THE OWNER, AN AUTHORIZED AGENT, OR LAND SURVEYOR HAS WITNESSED OR OTHERWISE REFERENCED THEIR LOCATION. THE CONTRACTOR WILL BE RESPONSIBLE FOR HAVING AN AUTHORIZED SURVEYOR REESTABLISH ANY SECTION OR SUB-SECTION MONUMENTS DISRUPTED BY THEIR OPERATIONS.
11. THE CONTRACTOR SHALL TAKE ALL NECESSARY PRECAUTIONS FOR THE PROTECTION OF EXISTING PLANT MATERIAL FOR WHICH THE CONTRACT DOES NOT PROVIDE REMOVAL. THE PROTECTION OF EXISTING PLANT MATERIAL AND THE REPAIR OR REPLACEMENT OF EXISTING PLANT MATERIAL DAMAGED BY THE CONTRACTOR SHALL BE DONE IN ACCORDANCE WITH THE REQUIREMENTS OF SECTION 201 OF THE STANDARD SPECIFICATIONS.
12. THE CONTRACTOR SHALL BE REQUIRED TO MAINTAIN ACCESS TO ALL PRIVATE AND COMMERCIAL PROPERTIES AT ALL TIMES DURING THE CONSTRUCTION OF THIS PROJECT.
13. CLEARING OF BRUSH, BUSHES AND TREES WITH A DIAMETER LESS THAN 6" WILL NOT BE PAID FOR SEPARATELY PER SECTION 202 OF THE STANDARD SPECIFICATIONS.
14. WHERE SPECIFIED ON THE PLANS, OR DIRECTED BY THE ENGINEER, TRIMMING OF VEGETATION WILL BE CONSIDERED TO BE CLEARING AND NOT MEASURED FOR PAYMENT.
15. THE COST OF CONNECTING EXISTING STORM SEWERS TO THE PROPOSED DRAINAGE SYSTEM AND/OR CONNECTING PROPOSED STORM SEWER TO EXISTING STRUCTURES SHALL BE CONSIDERED INCLUDED IN THE COST OF THE PROPOSED DRAINAGE STRUCTURE AND/OR THE COST OF THE PROPOSED STORM SEWER. ALL NECESSARY ADDITIONAL PIPE USED WILL BE PAID FOR AT THE CONTRACT UNIT PRICE FOR STORM SEWER OF THE SIZE REQUIRED.
16. THE PROPOSED DRAINAGE STRUCTURES AND PIPES SHALL BE PROTECTED IMMEDIATELY AFTER THEY ARE CONSTRUCTED UNTIL THE SURFACES THAT DRAIN TO THEM ARE FULLY PAVED OR VEGETATED.

17. THE CONTRACTOR SHALL BE SOLELY RESPONSIBLE FOR JOB SITE SAFETY AS WELL AS SUPERVISION, DIRECTION AND MEANS/METHOD OF CONSTRUCTION.
18. PROPOSED SIDEWALK CROSS/LONGITUDINAL SLOPE SHALL MEET ALL AMERICAN DISABILITY ACT (ADA) REQUIREMENTS. RECONSTRUCTED SIDEWALKS WITH CROSS SLOPES AND LONGITUDINAL SLOPES FOUND TO EXCEED 2.0% AND 5.0% RESPECTIVELY SHALL BE RECONSTRUCTED AGAIN BY THE CONTRACTOR AT NO ADDITIONAL COST.
19. CONTRACTOR SHALL USE PRECOATED GALVANIZED CORRUGATED STEEL PIPE AT ALL LOCATIONS IN THE ENGINEERING DRAWINGS WHERE PIPE CULVERTS, CLASS C, TYPE 1 12" AND 18" HAVE BEEN CALLED OUT.

DISTRICT ONE STANDARD DETAILS

- BD-01 DRIVEWAY DETAILS-DISTANCE BETWEEN R.O.W AND FACE OF CURB AND EDGE OF SHOULDER >=15'
- BD-07 DETAIL OF STORM SEWER CONNECTION TO EXISTING STORM SEWER
- BD-51 BENCHING DETAIL FOR EMBANKMENT WIDENING
- TC-13 DISTRICT ONE TYPICAL PAVEMENT MARKINGS

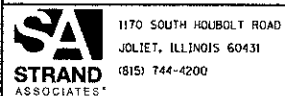
HIGHWAY STANDARDS

IDOT HIGHWAY STANDARDS:

- 00001-06 STANDARD SYMBOLS, ABBREVIATIONS AND PATTERNS
- 280001-07 TEMPORARY EROSION CONTROL SYSTEMS
- 424001-07 PERPENDICULAR CURB RAMPS FOR SIDEWALKS
- 424006-01 DIAGONAL CURB RAMPS
- 424011-01 CORNER PARALLEL CURB RAMPS
- 424021-01 DEPRESSED CORNER
- 542401-01 METAL END SECTION FOR PIPE CULVERTS
- 606001-05 CONCRETE CURB TYPE B AND COMBINATION CONCRETE CURB AND GUTTER
- 630001-10 STEEL PLATE BEAM GUARDRAIL
- 630301-06 SHOULDER WIDENING FOR TYPE 1 (SPECIAL) GUARDRAIL TERMINALS
- 635006-03 REFLECTOR AND TERMINAL MARKER PLACEMENT
- 635011-02 REFLECTOR MARKER AND MARKING DETAILS
- 701006-04 OFF-ROAD OPERATIONS, 2L, 2W, 15' (4.5 M) TO 24" (600 MM) FROM PAVEMENT EDGE
- 701306-03 LANE CLOSURE, 2L, 2W, SLOW MOVING OPERATIONS DAY ONLY, FOR SPEEDS > 45MPH
- 701801-05 SIDEWALK, CORNER OR CROSSWALK CLOSURE
- 701901-02 TRAFFIC CONTROL DEVICES

DENOTES WORK INCLUDED IN THE COST OF OTHER ITEMS.

FILE NAME: S:\ID\15700-6799\6762\085\Micro\sheet\gennotes.dgn



1170 SOUTH HOBOLT ROAD JOLIET, ILLINOIS 60431 (815) 744-4200	USER NAME = akwsain	DESIGNED - AAN	REVISED -
	PLOT SCALE = 40,0000 1/4 IN.	DRAWN - JKP	REVISED -
	PLOT DATE = 12/26/2012	CHECKED - MAG	REVISED -
		DATE - 04/09/12	REVISED -

**STATE OF ILLINOIS
DEPARTMENT OF TRANSPORTATION**

GENERAL NOTES AND STANDARDS

SCALE: AS SHOWN SHEET NO. OF SHEETS STA. TO STA.


RTE.	SECTION	COUNTY	TOTAL SHEETS	SHEET NO.
1007	09-00021-00-SW	WILL	22	2
			CONTRACT NO. 63772	
FED. ROAD DIST. NO. 1 ILLINOIS FED. AID PROJECT				

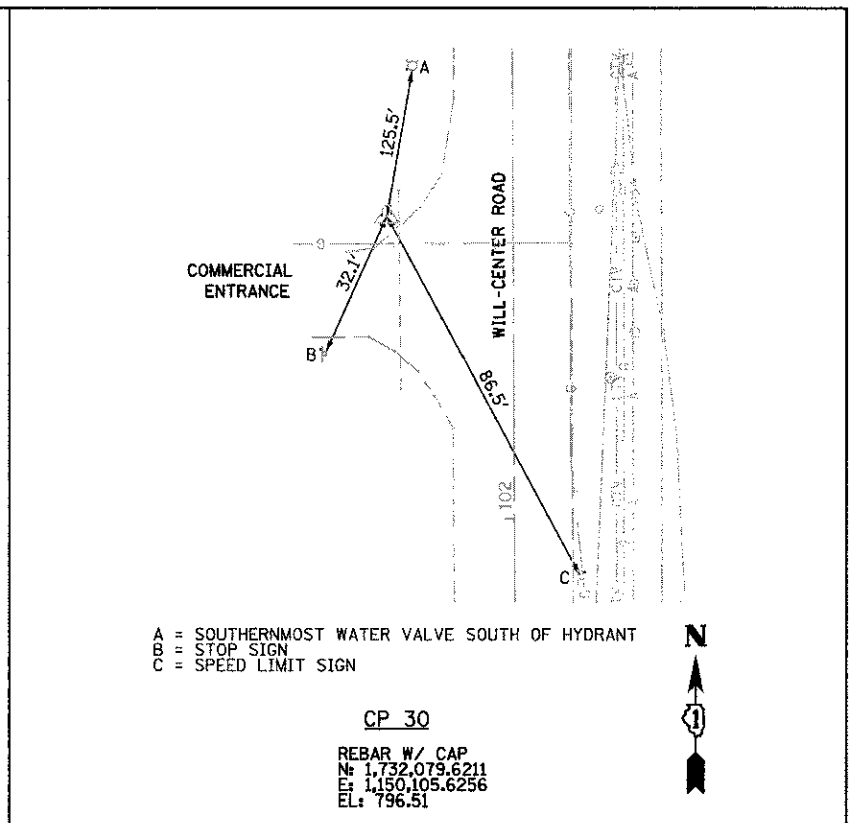
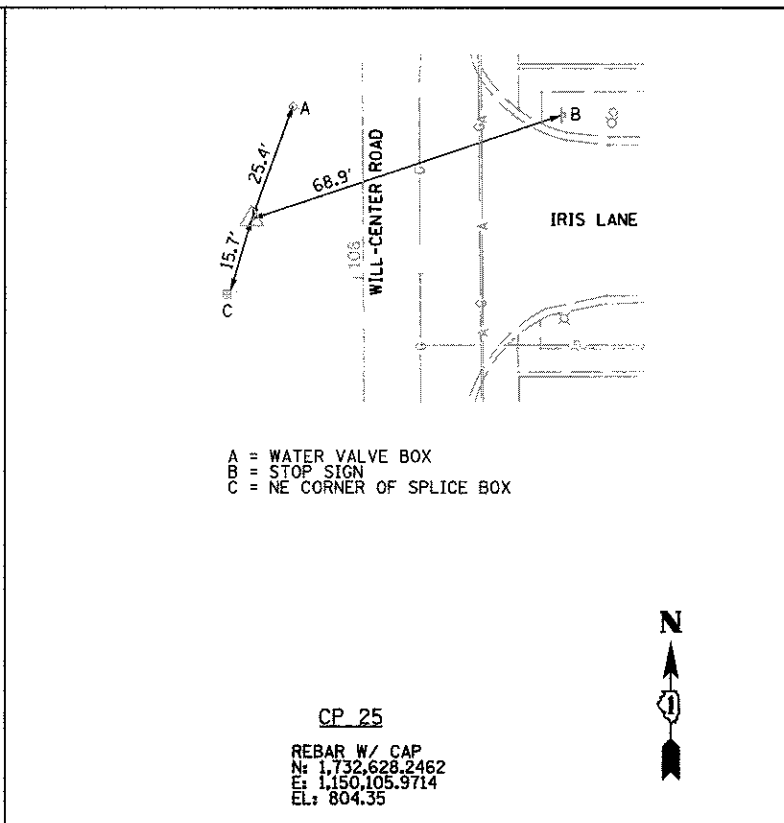
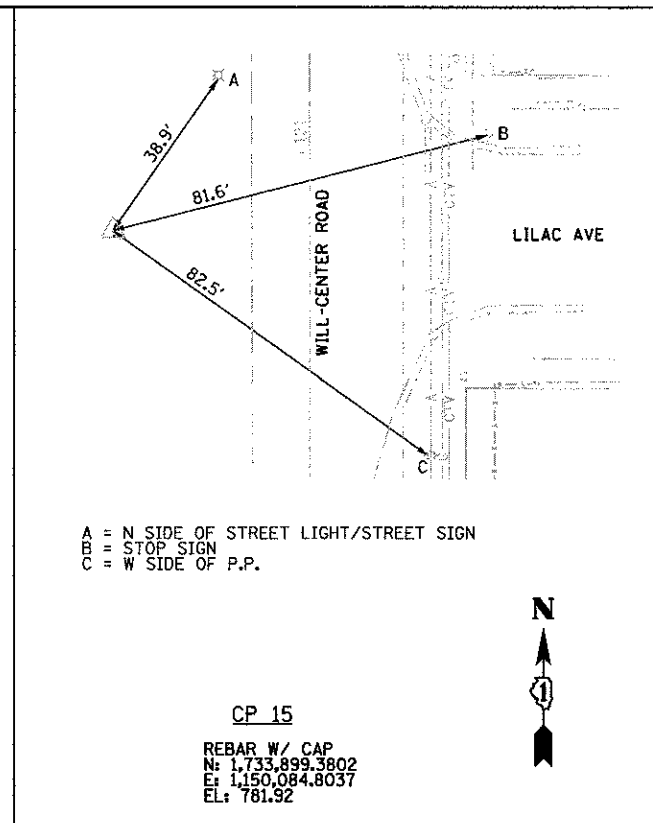
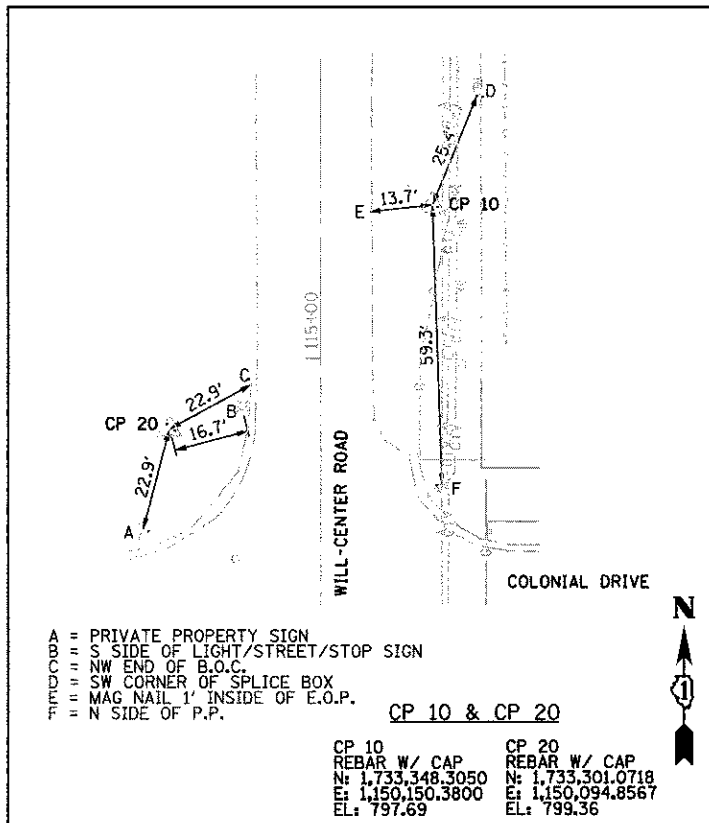
SUMMARY OF QUANTITIES

CODE NO.	ITEM	UNIT	TOTAL QUANTITY	CONST. CODE
				100% FEDERAL SAFETY 0021 RURAL
28000400	PERIMETER EROSION BARRIER	FOOT	400	400
28000500	INLET AND PIPE PROTECTION	EACH	4	4
28100101	STONE RIPRAP, CLASS A1	SQ YD	5	5
31100300	SUBBASE GRANULAR MATERIAL, TYPE A 4"	SQ YD	15	15
35101600	AGGREGATE BASE COURSE, TYPE B 4"	SQ YD	1,365	1,365
40600100	BITUMINOUS MATERIALS (PRIME COAT)	GALLON	20	20
42400100	PORTLAND CEMENT CONCRETE SIDEWALK 4 INCH	SQ FT	12,182	12,182
42400800	DETECTABLE WARNINGS	SQ FT	60	60
44000200	DRIVEWAY PAVEMENT REMOVAL	SQ YD	92	92
44000500	COMBINATION CURB AND GUTTER REMOVAL	FOOT	100	100
44000600	SIDEWALK REMOVAL	SQ FT	100	100
48100300	AGGREGATE SHOULDERS, TYPE A 4"	SQ YD	77	77
50105220	PIPE CULVERT REMOVAL	FOOT	48	48
54215547	METAL END SECTIONS 12"	EACH	4	4
54215553	METAL END SECTIONS 18"	EACH	1	1

* SPECIALTY ITEM

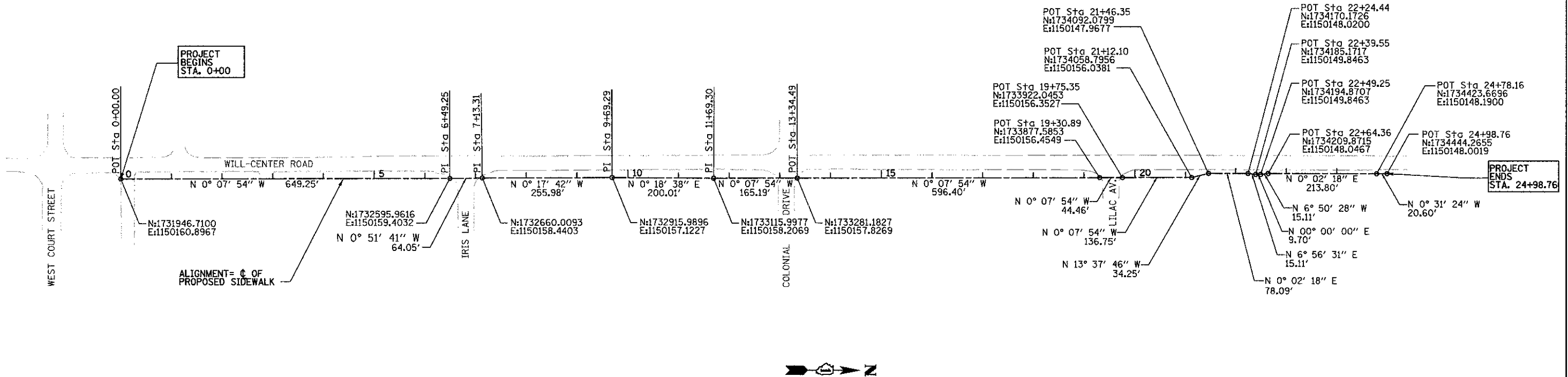
FILE NAME = S:\JOL\67269-6799\6762\689\MicroStation\689a\689a.dgn

 1170 SOUTH HOUBOLT ROAD JOLIET, ILLINOIS 60431 (815) 744-4200	USER NAME = aknoein	DESIGNED - AAN	REVISED -	STATE OF ILLINOIS DEPARTMENT OF TRANSPORTATION	SUMMARY OF QUANTITIES		MUN. RTE.	SECTION	COUNTY	TOTAL SHEETS	SHEET NO.
	PLOT SCALE = 20.0000' / IN.	DRAWN - AJJ	REVISED -		1007	09-00021-00-SW	WILL	22	4		
	PLOT DATE = 12/26/2012	CHECKED - MAG	REVISED -		SCALE: AS SHOWN		SHEET NO. 2 OF 4 SHEETS	STA.	TO STA.	CONTRACT NO. 63772	
	DATE - 10/02/2012	REVISOR -	REVISED -						FED. ROAD DIST. NO. 1 (ILLINOIS) FED. AID PROJECT		



BENCHMARKS

WILL COUNTY GPS MONUMENT 1422
PID AE2493
N: 1,734,443.57
E: 1,150,150.38
EL: 779.36



FILE NAME = S:\JUL16788-6799\6782\BFS\Mapcon\aha\aha\RTB.dgn

SA STRAND ASSOCIATES
1170 SOUTH HOBOLT ROAD
JOLIET, ILLINOIS 60431
(815) 744-4200

USER NAME = akwaan
PLDT SCALE = 48.0000' / 1" IN.
PLOT DATE = 12/14/2012

DESIGNED - AAN
DRAWN - JKP
CHECKED - MAG
DATE - 04/09/12

REVISED -
REVISED -
REVISED -
REVISED -

**STATE OF ILLINOIS
DEPARTMENT OF TRANSPORTATION**

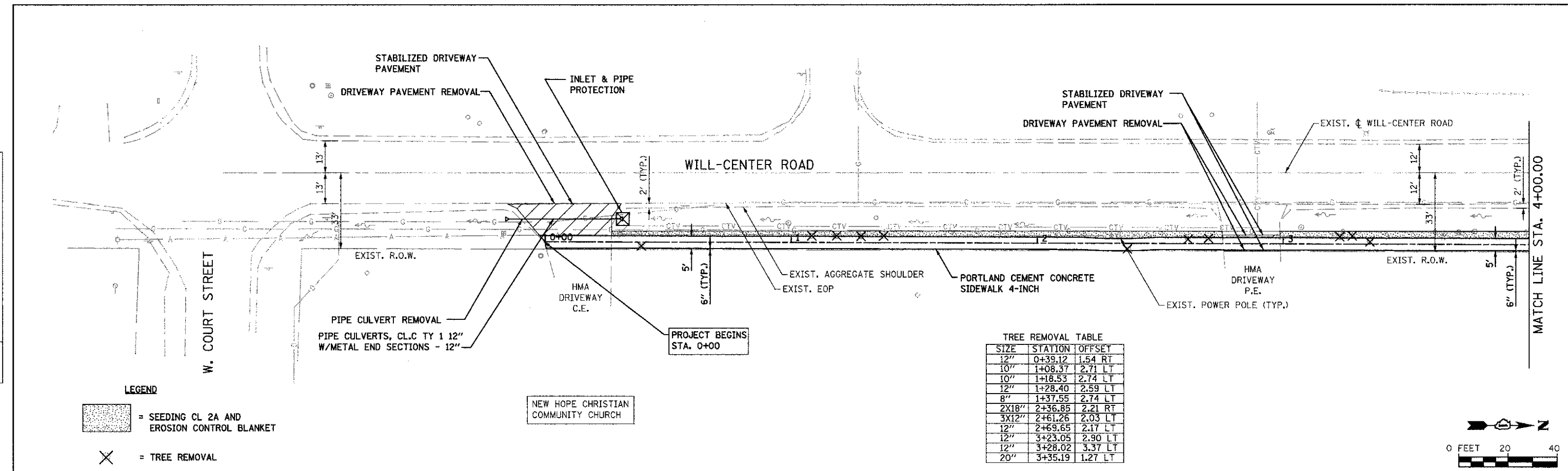
ALIGNMENTS, TIES, AND BENCHMARKS

SCALE: AS SHOWN SHEET NO. OF SHEETS STA. TO STA.

F.A.I. RTE.	SECTION	COUNTY	TOTAL SHEETS	SHEET NO.
09-00021-00-SW	WILL	22	8	
CONTRACT NO.63772				
FED. ROAD DIST. NO. 1 ILLINOIS FED. AID PROJECT				

PLAN	REVISIONS	DATE
NO.	NO.	NO.
BY	BY	BY
DATE	DATE	DATE
NO.	NO.	NO.
NO.	NO.	NO.
NO.	NO.	NO.

PROFILE	REVISIONS	DATE
NO.	NO.	NO.
BY	BY	BY
DATE	DATE	DATE
NO.	NO.	NO.
NO.	NO.	NO.
NO.	NO.	NO.

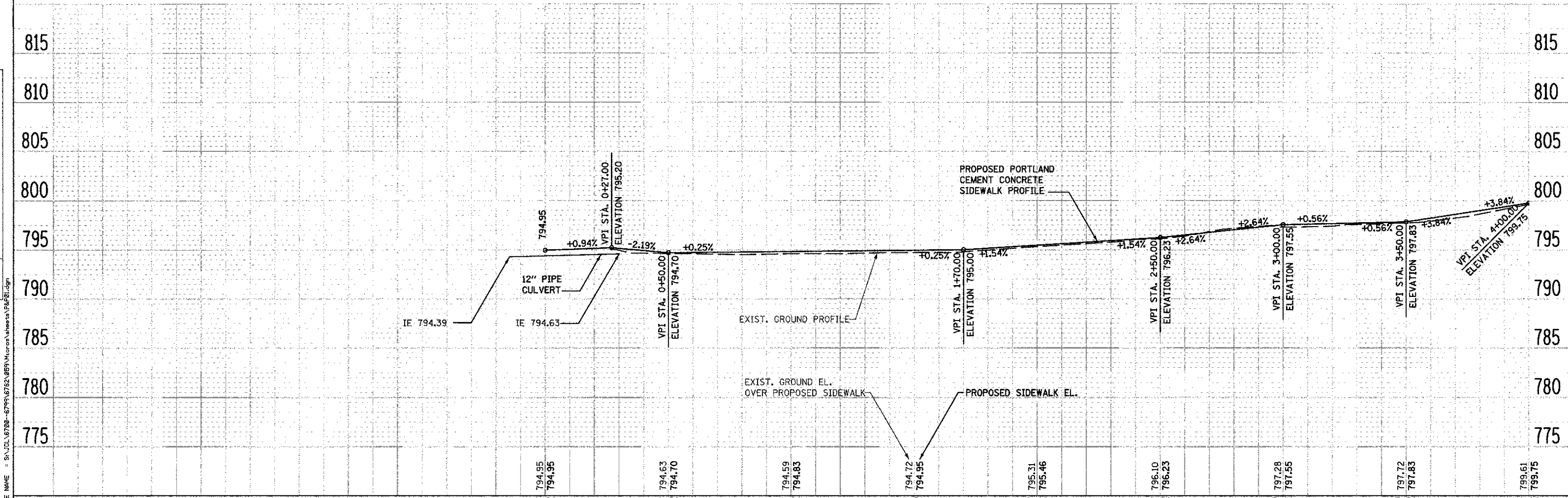
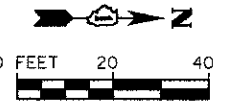


LEGEND

- = SEEDING CL 2A AND EROSION CONTROL BLANKET
- = TREE REMOVAL

TREE REMOVAL TABLE

SIZE	STATION	OFFSET
12"	0+39.12	1.54 RT
10"	1+08.37	2.71 LT
10"	1+18.53	2.74 LT
12"	1+28.40	2.59 LT
8"	1+37.55	2.74 LT
2X18"	2+36.85	2.21 RT
3X12"	2+61.26	2.03 LT
12"	2+69.65	2.17 LT
12"	3+23.05	2.90 LT
12"	3+28.02	3.37 LT
20"	3+35.19	1.27 LT



STRAND ASSOCIATES, INC. ENGINEERS
 1170 SOUTH HOUBOLT ROAD
 JOLIET, ILLINOIS 60431
 (815) 744-4200

USER NAME = akvassn	DESIGNED - AAN	REVISED -
PLLOT SCALE = 1/8" = 10'	CHECKED - MAG	REVISED -
PLLOT DATE = 12/26/2012	DRAWN - AJJ	REVISED -
	DATE - 10/02/2012	REVISED -

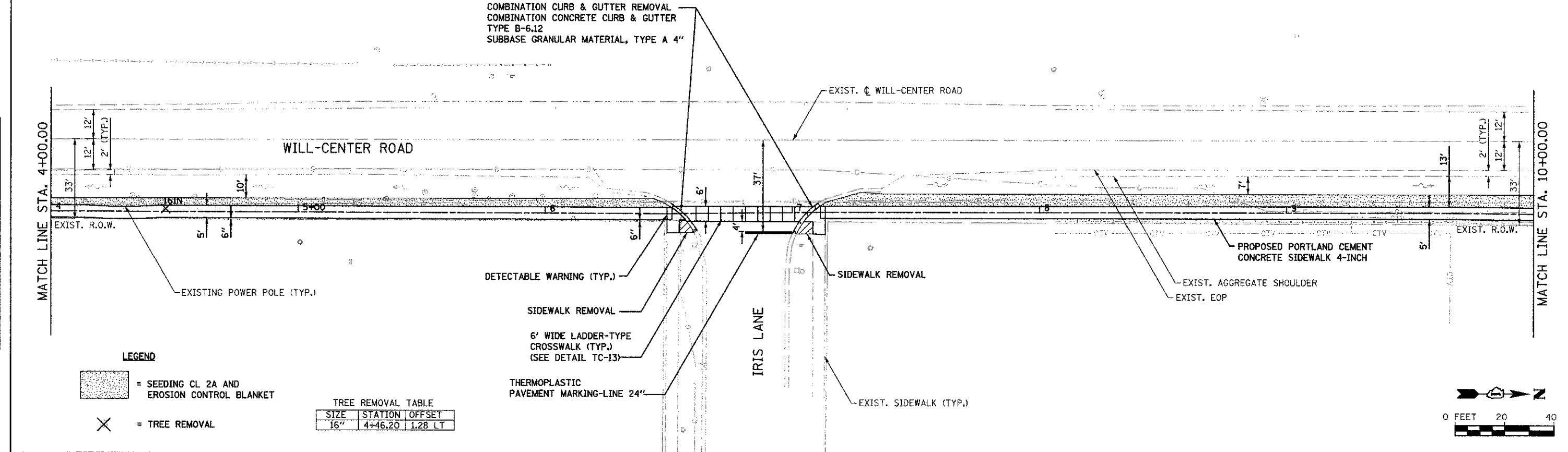
STATE OF ILLINOIS
DEPARTMENT OF TRANSPORTATION

WILL-CENTER ROAD SIDEWALK - PLAN & PROFILE
 SCALE: AS SHOWN SHEET NO. OF SHEETS STA. 0+00.00 TO STA. 4+00.00

MUN. RTE. 1007	SECTION 09-00021-00-SW	COUNTY WILL	TOTAL SHEETS 22	SHEET NO. 9
CONTRACT NO. 63772			FED. ROAD DIST. NO. 1 [ILLINOIS] FED. AID PROJECT	

DATE	
BY	
REVISION	
PLAN	
NO.	
NOTE BOOK	
NO.	
FILE NAME	

DATE	
BY	
REVISION	
PROFILE	
NO.	
NOTE BOOK	
NO.	
FILE NAME	



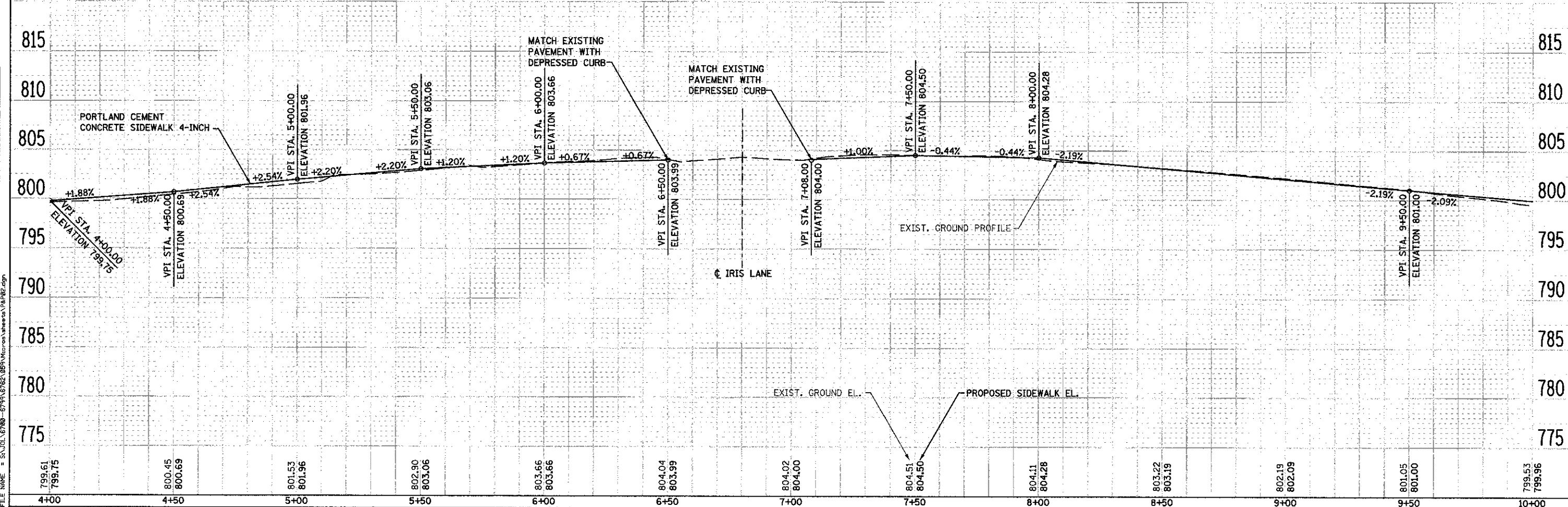
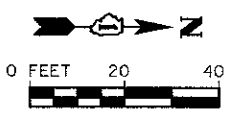
LEGEND

[Pattern] = SEEDING CL 2A AND EROSION CONTROL BLANKET

[X] = TREE REMOVAL

TREE REMOVAL TABLE

SIZE	STATION	OFFSET
16"	4+46.20	1.28 LT



799.61 799.75	800.45 800.69	801.53 801.96	802.90 803.06	803.66 803.66	804.04 803.99	804.02 804.00	804.51 804.50	804.11 804.28	803.22 803.19	802.19 802.09	801.05 801.00	799.53 799.96
4+00	4+50	5+00	5+50	6+00	6+50	7+00	7+50	8+00	8+50	9+00	9+50	10+00

1170 SOUTH HOUBOLT ROAD
JOLIET, ILLINOIS 60431
(815) 744-4200
STRAND
ENGINEERS

USER NAME = akwasin	DESIGNED - AAN	REVISED -
CHECKED - MAG	REVISED -	
DRAWN - AJJ	REVISED -	
DATE - 10/02/2012	REVISED -	

STATE OF ILLINOIS
DEPARTMENT OF TRANSPORTATION

WILL-CENTER ROAD SIDEWALK - PLAN & PROFILE

SCALE: AS SHOWN SHEET NO. OF SHEETS STA. 4+00.00 TO STA. 10+00.00

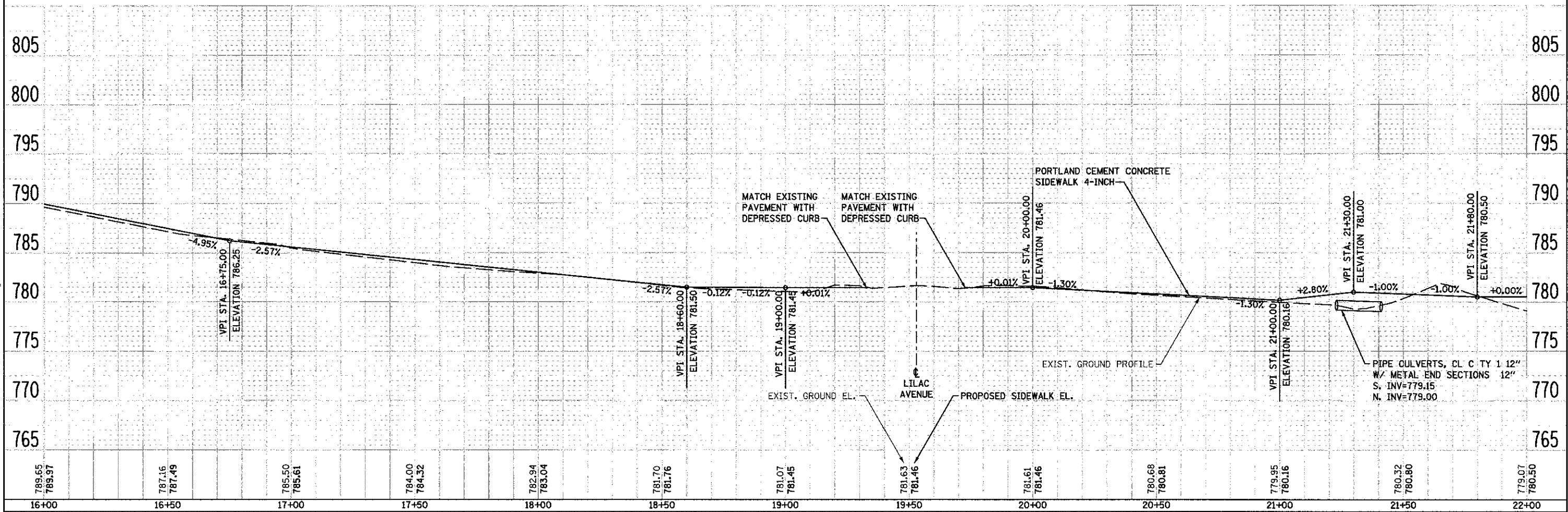
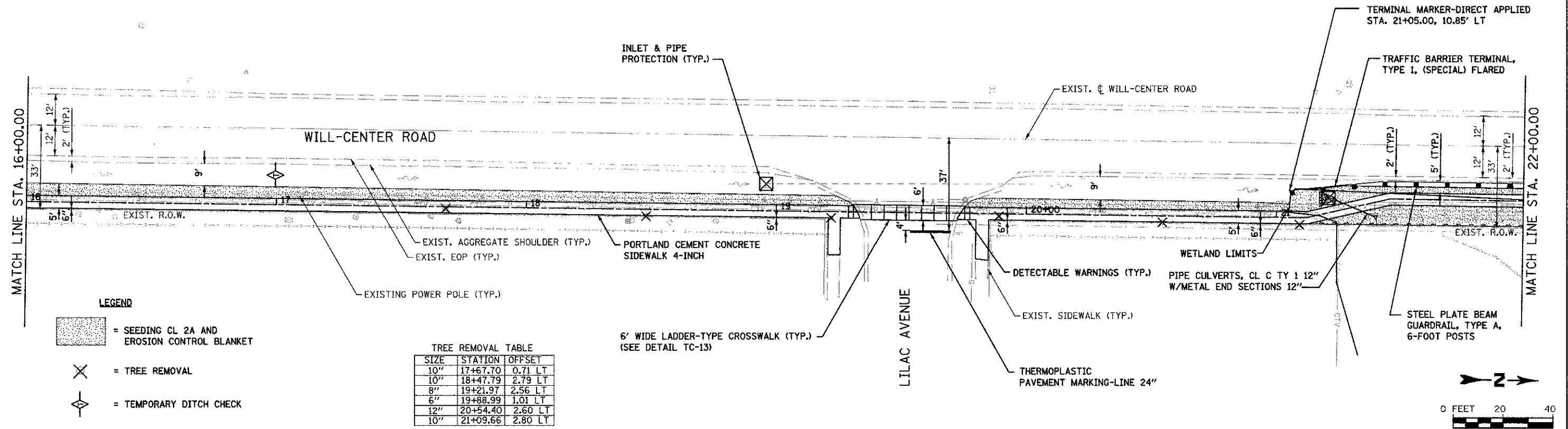
MUN. RTE. 1007	SECTION 09-00021-00-SW	COUNTY WILL	TOTAL SHEETS 22	SHEET NO. 10
CONTRACT NO. 63772				

FILE NAME = S:\JOLIET\6780-6795\6762\095\WorkArea\Sheet\PLR02.dgn

DATE	
BY	
PROJECT	
NO.	
DATE	
BY	
PROJECT	
NO.	

DATE	
BY	
PROJECT	
NO.	
DATE	
BY	
PROJECT	
NO.	

FILE NAME = S:\JULI_6789--6799\6782_085\MicroStation\Jules\PA\PA04.dgn



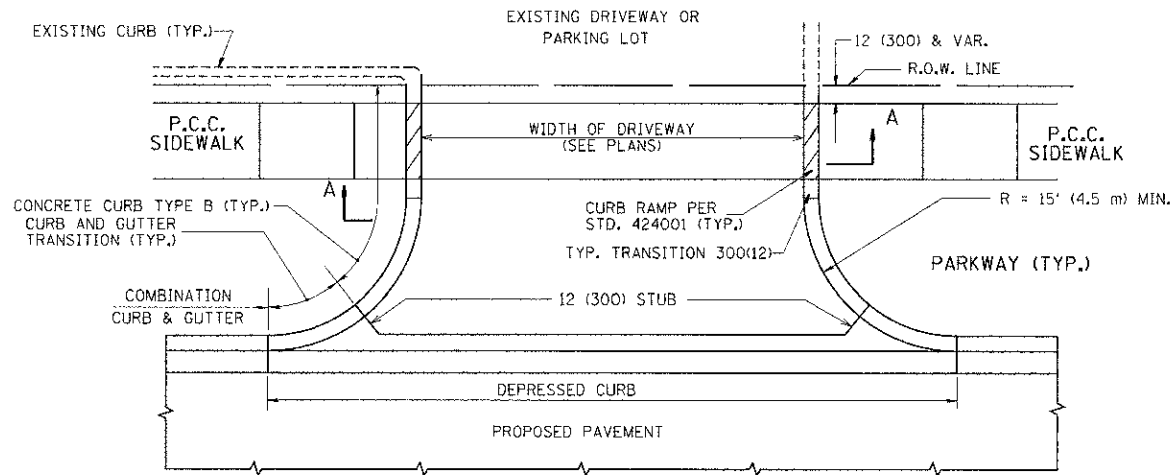
1170 SOUTH HOUBOLT ROAD
JOLIET, ILLINOIS 60431
STRAND ENGINEERS
(815) 744-4200

USER NAME = akwain	DESIGNED - AAN	REVISED -
CHECKED - MAG	REVISOR -	
DRAWN - AJJ	REVISOR -	
DATE - 10/02/2012	REVISOR -	

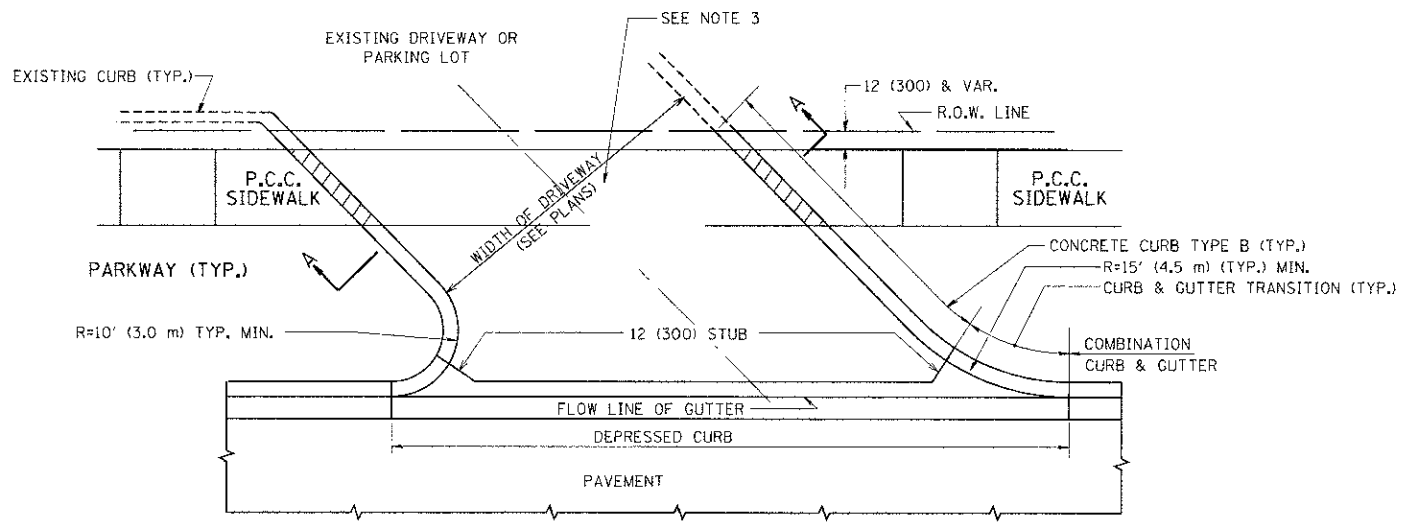
STATE OF ILLINOIS
DEPARTMENT OF TRANSPORTATION

WILL-CENTER ROAD SIDEWALK - PLAN & PROFILE
SCALE: AS SHOWN SHEET NO. OF SHEETS STA. 16+00.00 TO STA. 22+00.00

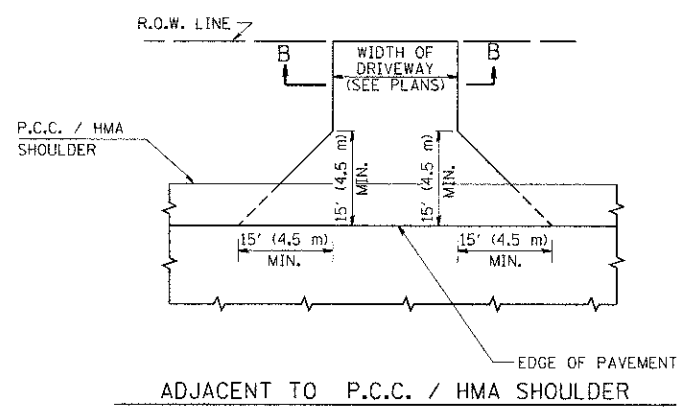
MUN. RTE. 1007	SECTION 09-00021-0G-SW	COUNTY WILL	TOTAL SHEETS 22	SHEET NO. 12
FED. ROAD DIST. NO. 1 ILLINOIS FED. AID PROJECT			CONTRACT NO. 63772	



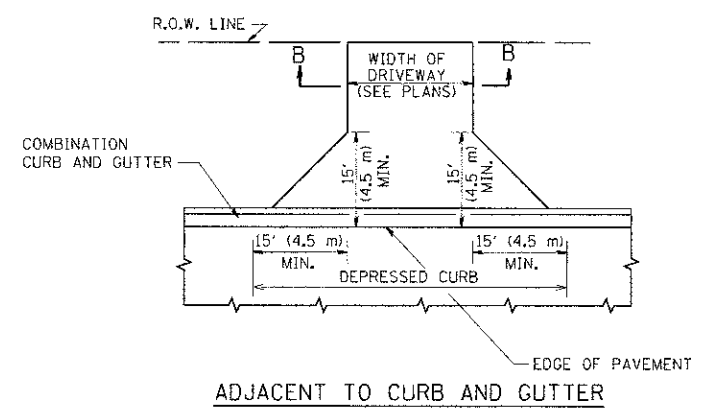
WITH CONCRETE CURB, TYPE B



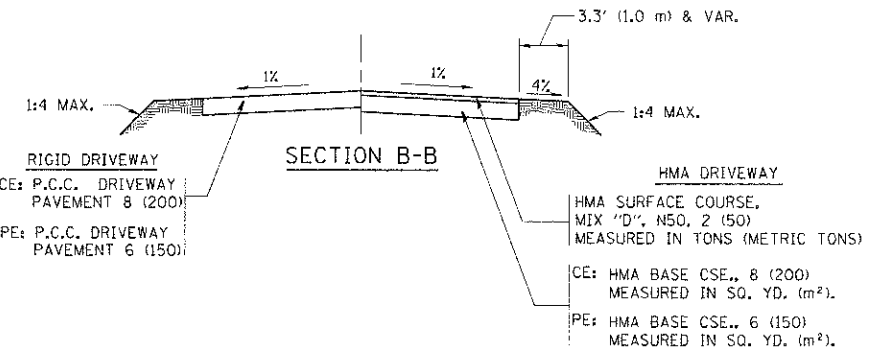
WITH CONCRETE CURB, TYPE B



ADJACENT TO P.C.C. / HMA SHOULDER



ADJACENT TO CURB AND GUTTER



SECTION B-B

RURAL FIELD ENTRANCE (FE)
HMA SURFACE COURSE, MIX 'D', N50, 2 (50) MEASURED IN TONS (METRIC TONS)
AGGREGATE BASE CSE., TYPE B, 8 (200) MEASURED IN SQ. YD. (m²).

GENERAL NOTES:

DRIVEWAY SLOPES, LOCATIONS, & GEOMETRIC LAYOUT SHALL BE IN ACCORDANCE WITH THE LATEST EDITION OF THE "HANDBOOK FOR POLICY ON PERMITS FOR ACCESS DRIVEWAYS TO STATE HIGHWAYS". FOR FURTHER LAYOUT REQUIREMENTS, REFER TO ILLUSTRATIONS IN THE PERMIT HANDBOOK. DRIVEWAYS SHALL BE REPLACED IN KIND, UNLESS OTHERWISE NOTED ON THE PLANS.

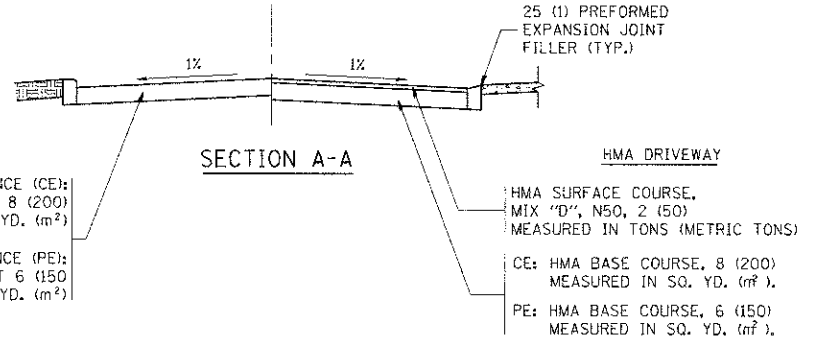
COMMERCIAL DRIVEWAYS SHALL BE CONSTRUCTED WITH CONCRETE CURB, TYPE B RETURNS EXCEPT WHEN THE SIDEWALK EDGE IS 4 FEET (1.2 METERS) OR LESS FROM THE BACK OF CURB, CONSTRUCT A FLARE DRIVEWAY WITHOUT CURB.

THE RESIDENT ENGINEER SHALL CONTACT THE TRAFFIC PERMIT OFFICE AT 847/ 705-4131 FOR ANY QUESTIONS ON DRIVEWAYS SHOWN IN THE PLANS; SPECIFICALLY IN REFERENCE TO ADDITIONAL AND/OR RELOCATION/REMOVAL OF A DRIVEWAY.

COMBINATION CONCRETE CURB & GUTTER SHALL BE MEASURED STRAIGHT ACROSS THE DRIVEWAY. NO ADDITIONAL COMPENSATION WILL BE ALLOWED FOR THE CURB & GUTTER TRANSITION.

1 (25) PREFORMED EXPANSION JOINT FILLER WILL NOT BE PAID SEPARATELY, BUT SHALL BE CONSIDERED INCLUDED IN THE COST OF THE P.C.C. DRIVEWAY PAVEMENT OR P.C.C. SIDEWALK.

WHEN THE P.C.C. SIDEWALK EXTENDS THROUGH THE DRIVEWAY, THE THICKNESS OF THE SIDEWALK IN THE DRIVEWAY AREA SHALL BE THE SAME AS THE DRIVEWAY THICKNESS. SIDEWALK WILL BE PAID FOR AS P.C.C. SIDEWALK OF THE THICKNESS SPECIFIED. SIDEWALK CROSS SLOPE THRU DRIVEWAY AREA TO BE A MAXIMUM OF 1:50.



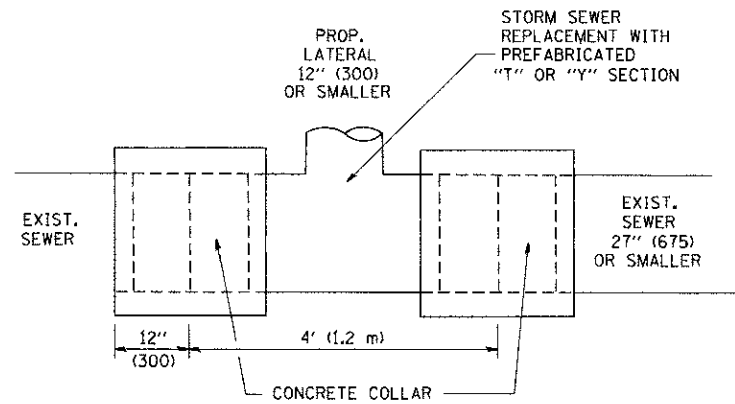
SECTION A-A

FILE NAME =	USER NAME = jayss	DESIGNED - R. SHAH	REVISED - P. LOFLUER 04-15-03
os:\pw\work\pucdot\jaysse\d08188315\loc01.dwg		DRAWN -	REVISED - R. BORO 01-01-07
		CHECKED -	REVISED - R. BORO 06-11-08
		DATE - 11-04-95	REVISED - R. BORO 09-06-11

**STATE OF ILLINOIS
DEPARTMENT OF TRANSPORTATION**

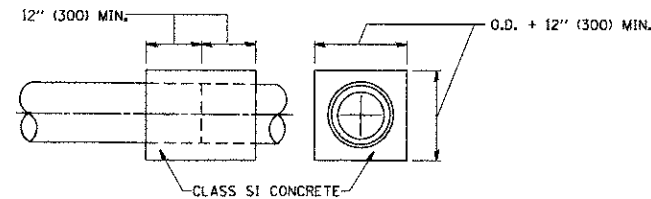
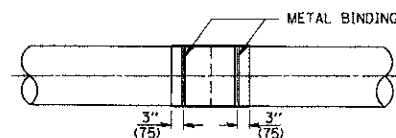
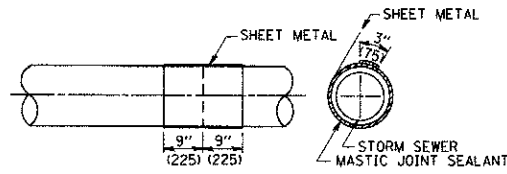
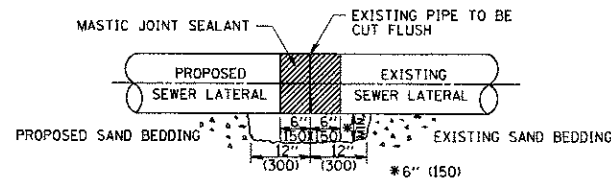
DRIVEWAY DETAILS - DISTANCE BETWEEN R.O.W. AND FACE OF CURB & EDGE OF SHOULDER >= 15' (4.5 m)	
SCALE: NONE	SHEET NO. 1 OF 1 SHEETS
STA.	TO STA.

F.A. RTE.	SECTION	COUNTY	TOTAL SHEET SHEETS: NO.
1007	09-00021-00-SW	WILL	22 14
BD0156-07 (BD-01)		CONTRACT NO. 03772	
FED. ROAD DIST. NO. 1 ILLINOIS FED. AID PROJECT			



DETAIL "A"

LATERAL CONNECTION TO EXISTING SEWER OF 27" (675) OR SMALLER

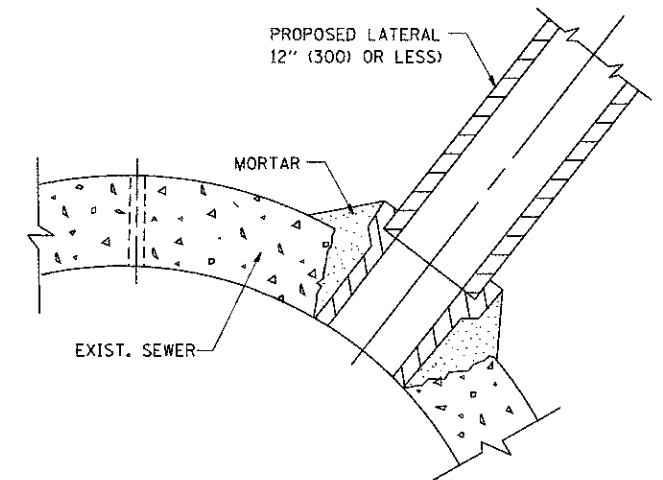


DETAIL "B"

CLASS SI CONCRETE COLLAR

CONSTRUCTION SEQUENCE

- CUT THE EXISTING END OF THE PIPE SO AS TO PRESENT A FLUSH BUTT JOINT. BRUSH AND CLEAN ALL PIPES.
- APPLY THE MASTIC JOINT SEALANT TO THE FIRST 6" (150) OF EACH PIPE.
- BUTT THE PIPES TOGETHER LEAVING A MINIMUM OF 12" x 6" (300 x 150) DEEP EXCAVATION UNDER AND AROUND EACH PIPE END.
- CUT A PIECE OF SHEET METAL GAGE NO. 19 1.1 (0.0418) 18" (450) WIDE BY THE OUTSIDE CIRCUMFERENCE OF THE PIPE PLUS 3" (75) LONG.
- WRAP THE SHEET METAL AROUND THE PIPES, 9" (225) ON EACH SIDE OF THE JOINT, STARTING AT THE TOP OF THE PIPE.
- LAP THE SHEET METAL AT LEAST 3" (75) AT THE TOP OF THE PIPE AND PLACE THE MASTIC JOINT SEALANT BETWEEN THE LAP.
- PLACE TWO METAL BANDS AROUND THE SHEET METAL AND TIGHTEN.
- WIPE OFF ANY EXCESS MASTIC JOINT SEALANT THAT OZES OUT FROM BETWEEN THE SHEET METAL AND THE PIPES.
- PLACE CLASS SI CONCRETE AROUND THE JOINT.



DETAIL "C"

PROPOSED LATERAL CONNECTION TO EXISTING SEWER OF 30" (750) OR LARGER

NOTES

MATERIAL

MATERIAL USED FOR THE TEE OR WYE SECTION SHALL BE COMPATIBLE WITH THE EXISTING STORM SEWER OR THE PROPOSED STORM SEWER.

CONSTRUCTION METHODS

- THIS WORK SHALL BE CONSTRUCTED IN CONFORMANCE WITH THE APPLICABLE PORTIONS OF SECTION 550 OF THE STANDARD SPECIFICATIONS.
- CONNECTION TO AN EXISTING STORM SEWER SHALL BE BY EITHER OF THE FOLLOWING METHODS:
 - PROPOSED STORM SEWER CONNECTION TO EXISTING SEWER OF 27" (675) OR SMALLER SEE DETAIL "A" AND "B".
 - PROPOSED STORM SEWER CONNECTION TO EXISTING SEWER OF 30" (750) OR LARGER SEE DETAIL "C".

IF THE EXISTING SEWER PIPE IS CRACKED, BROKEN OR OTHERWISE DAMAGED BY THE CONTRACTOR IN MAKING THE CIRCULAR OPENING, THE CONTRACTOR SHALL REPLACE THAT SECTION OF PIPE WITH PIPE EQUAL AND SIMILAR IN ALL RESPECTS TO THE PIPE IN THE EXISTING SEWER, IN A CAREFUL WORKMANLIKE MANNER, WITHOUT EXTRA COMPENSATION.

GENERAL

CARE MUST BE TAKEN TO PREVENT DEBRIS FROM ENTERING THE SEWER. ALL DEBRIS WHICH ENTERS THE SEWER MUST BE REMOVED. THE SEWER MUST BE LEFT CLEAN AND UNOBSTRUCTED UPON COMPLETION OF THE CONTRACT.

CARE MUST BE TAKEN TO PREVENT ANY PART OF THE NEW PIPE CONNECTION FROM PROJECTING INTO THE EXISTING SEWER.

BASIS OF PAYMENT

TEE OR WYE CONNECTIONS SHALL BE PAID FOR AT THE CONTRACT UNIT PRICE EACH FOR STORM SEWER TEE OR WYE OF THE TYPE AND SIZE SPECIFIED IN THE PLANS. THIS PRICE SHALL INCLUDE ALL EXCAVATION OF THE TRENCH, REMOVAL OF THE EXISTING STORM SEWER, FURNISHING AND INSTALLING THE SPECIFIED TEE OR WYE SECTION, FURNISHING AND INSTALLING THE REQUIRED CONCRETE COLLAR, AND ALL OTHER MATERIAL NECESSARY TO COMPLETE THIS WORK AS SHOWN AND SPECIFIED.

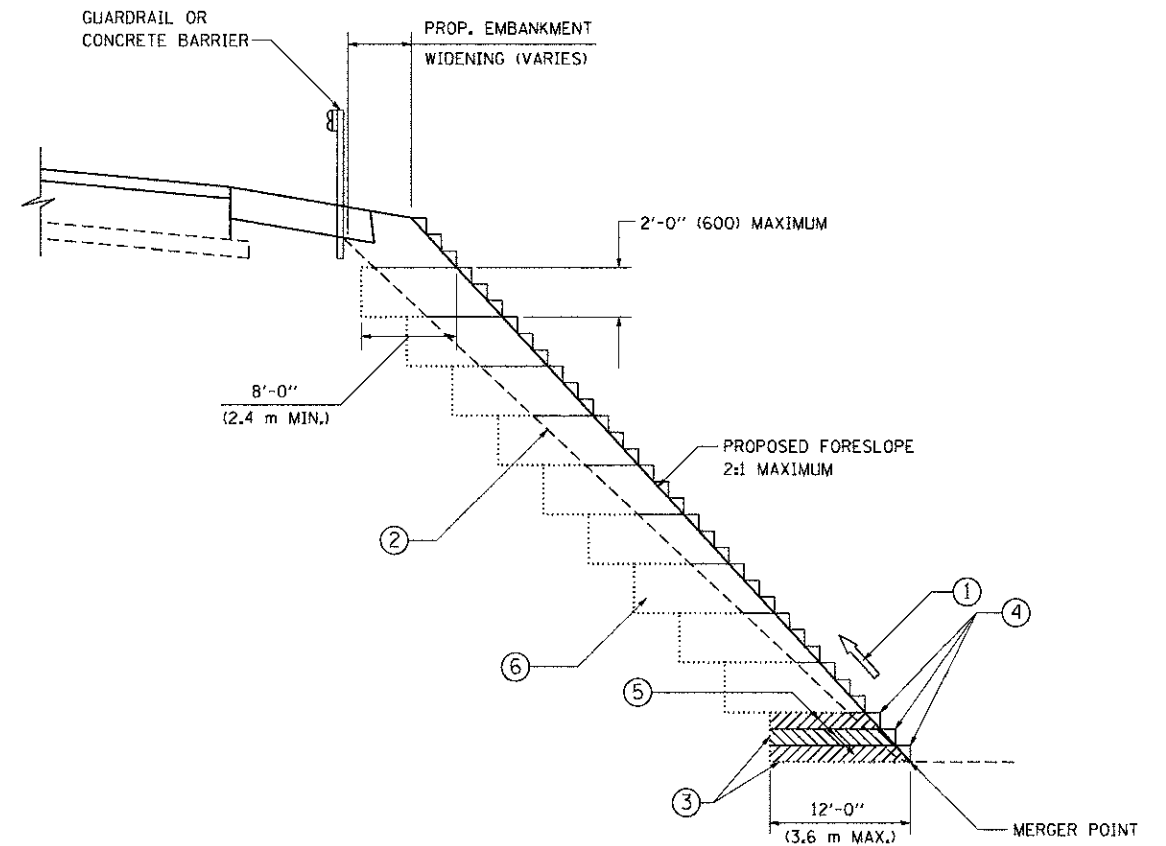
REMOVAL AND REINSTALLATION OF EXISTING STORM SEWER ADJACENT TO THE PROPOSED TEE OR WYE SECTION, FOR THE PURPOSE OF FACILITATING THE INSTALLATION OF THE TEE OR WYE SECTION, WILL NOT BE PAID FOR SEPARATELY BUT SHALL BE INCLUDED IN THE UNIT PRICE BID FOR THE WORK.

TRENCH BACKFILL, EXCAVATION IN ROCK AND REMOVAL AND REPLACEMENT OF UNSUITABLE MATERIAL BELOW PLAN BEDDING GRADE WILL BE PAID FOR SEPARATELY.

CONCRETE COLLAR FOR CONNECTING A PROPOSED STORM SEWER TO AN EXISTING STORM SEWER WILL NOT BE PAID FOR SEPARATELY BUT SHALL BE INCLUDED IN THE COST OF THE PROPOSED STORM SEWER.

ALL DIMENSIONS ARE IN INCHES (MILLIMETERS) UNLESS OTHERWISE SHOWN.

FILE NAME = W:\diststd\22x34\bd07.dgn	USER NAME = geglancobt	DESIGNED - M. DE YONG	REVISED - M. DE YONG 05-08-92	STATE OF ILLINOIS DEPARTMENT OF TRANSPORTATION	DETAIL OF STORM SEWER CONNECTION TO EXISTING SEWER			F.A. - RTE. 1007	SECTION 09-00021-00-SW	COUNTY WILL	TOTAL SHEETS 22	SHEET NO. 15
	PLOT SCALE = 50.000' / INL	DRAWN -	REVISED - R. SHAH 09-09-94		SCALE: NONE	SHEET NO. 1	OF 1 SHEETS	STA.	TO STA.	CONTRACT NO. 63772		
	PLOT DATE = 1/4/2008	CHECKED -	REVISED - R. SHAH 10-25-94		BD500-01 (BD-7)							
		DATE - 07-25-90	REVISED - R. SHAH 06-12-96		FED. ROAD DIST. NO. 1 ILLINOIS FED. AID PROJECT							



**TYPICAL BENCHING DETAIL
FOR EMBANKMENT**

NOTES:

- ① CONSTRUCT SUCCEEDING BENCH CUTS AND EMBANKMENT PLACEMENT AND COMPACTION FROM BOTTOM TO TOP IN STAIRSTEP FASHION.
- ② EXISTING FORESLOPE PREPARED IN ACCORDANCE WITH ARTICLE 205.03 OF THE STANDARD SPECIFICATIONS.
- ③ BENCH CUT EXISTING SLOPE TYPICAL FOR EACH STEP.
- ④ TRIM TO FINAL SLOPE.
- ⑤ EQUAL 8-INCH (200) LIFTS OF EMBANKMENT COMPACTED IN ACCORDANCE WITH ARTICLE 205.05 OF THE STANDARD SPECIFICATIONS.
- ⑥ EXCAVATION OF BENCH CUTS WITHIN EXISTING EMBANKMENT WILL BE PAID FOR AT THE CONTRACT UNIT PRICE PER CUBIC METER OR CUBIC YARD FOR "EARTH EXCAVATION". THIS PRICE WILL INCLUDE ALL LABOR AND MATERIAL, NO ADDITIONAL COMPENSATION WILL BE ALLOWED.
- ⑦ SLOPES SHALL BE BENCHED ACCORDING TO THIS DETAIL WHEN THE SLOPE IS STEEPER THAN 4:1 AND THE HEIGHT IS GREATER THAN 5' (1.5 m).

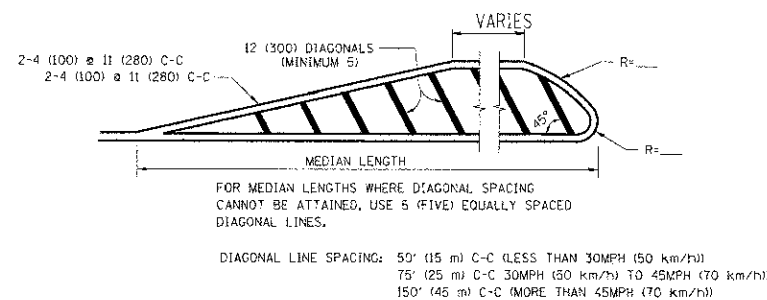
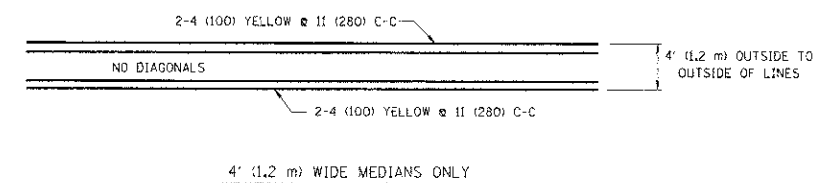
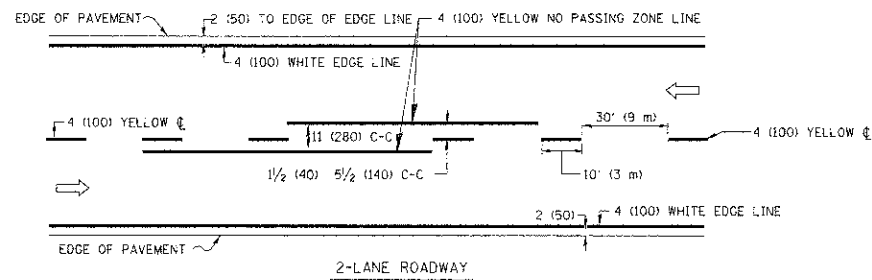
ALL DIMENSIONS ARE IN INCHES (MILLIMETERS) UNLESS OTHERWISE SHOWN.

FILE NAME = W:\dotstd\22x34\bd61.dgn	USER NAME = gegljanobt	DESIGNED -	REVISED -
		DRAWN - CADD	REVISED -
		CHECKED - S.E.B.	REVISED -
		DATE - 06-16-04	REVISED -

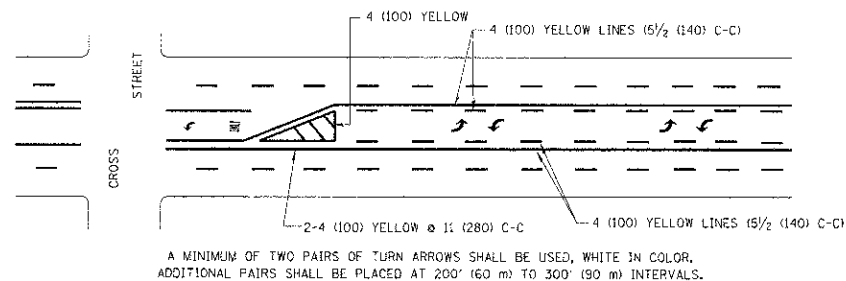
**STATE OF ILLINOIS
DEPARTMENT OF TRANSPORTATION**

BENCHING DETAIL FOR EMBANKMENT WIDENING			
SCALE: NONE	SHEET NO. 1 OF 1 SHEETS	STA.	TO STA.

F.A. RTE. 1607	SECTION 09-00021-00-SW	COUNTY WILL	TOTAL SHEETS 22	SHEET NO. 16
BD-51		CONTRACT NO. 63772		
FED. ROAD DIST. NO. 1 ILLINOIS FED. AID PROJECT				

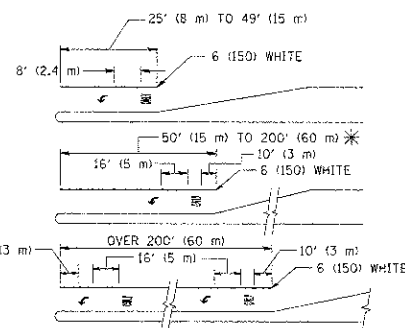


MEDIANS OVER 4' (1.2 m) WIDE



MEDIAN WITH TWO-WAY LEFT TURN LANE

TYPICAL PAINTED MEDIAN MARKING

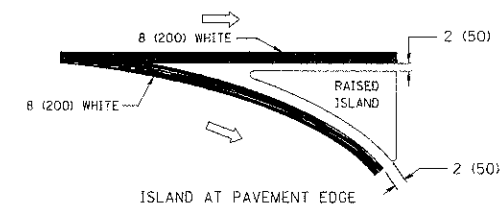
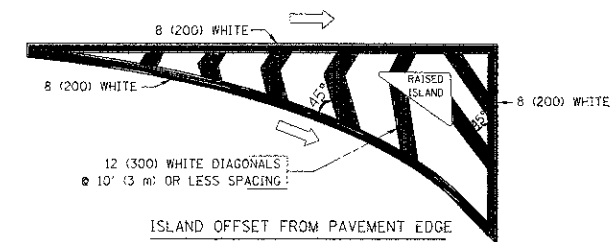


FULL SIZE LETTERS 8' (2.4 m) AND ARROWS SHALL BE USED.
AREA = 15.6 SQ. FT. (1.5 m²) ONLY AREA = 20.8 SQ. FT. (1.9 m²)

* TURN LANES IN EXCESS OF 400' (120 m) IN LENGTH MAY HAVE AN ADDITIONAL SET OF ARROW - "ONLY" INSTALLED MIDWAY BETWEEN THE OTHER TWO SETS OF ARROW - "ONLY".

TYPICAL LEFT (OR RIGHT) TURN LANE

TYPICAL TURN LANE MARKING

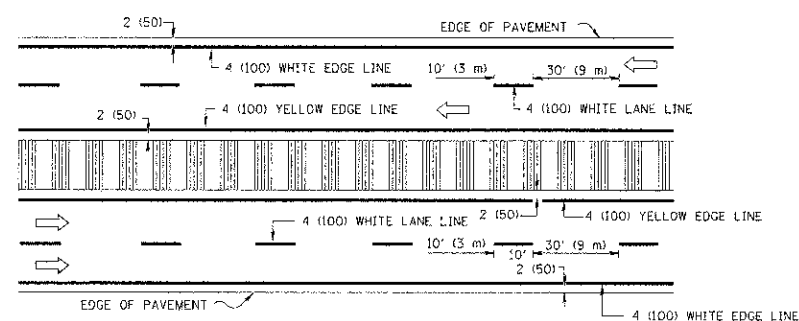
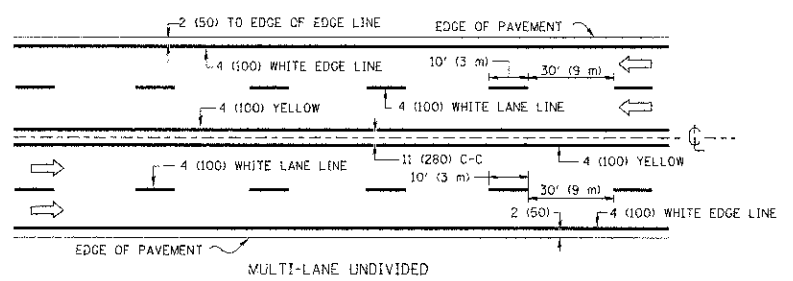


TYPICAL ISLAND MARKING

TYPE OF MARKING	WIDTH OF LINE	PATTERN	COLOR	SPACING / REMARKS
CENTERLINE ON 2 LANE PAVEMENT	4 (100)	SKIP-DASH	YELLOW	10' (3 m) LINE WITH 30' (9 m) SPACE
CENTERLINE ON MULTI-LANE UNDIVIDED PAVEMENT	2 @ 4 (100)	SOLID	YELLOW	11 (280) C-C
NO PASSING ZONE LINES FOR ONE DIRECTION FOR BOTH DIRECTIONS	4 (100)	SOLID	YELLOW	5 1/2 (140) C-C FROM SKIP-DASH CENTERLINE 11 (280) C-C OMIT SKIP-DASH CENTERLINE BETWEEN
LANE LINES	4 (100) 5 (125) ON FREEWAYS	SKIP-DASH SKIP-DASH	WHITE WHITE	10' (3 m) LINE WITH 30' (9 m) SPACE
DOTTED LINES (EXTENSIONS OF CENTER, LANE OR TURN LANE MARKINGS)	SAME AS LINE BEING EXTENDED	SKIP-DASH	SAME AS LINE BEING EXTENDED	2' (600) LINE WITH 6' (1.8 m) SPACE
EDGE LINES	4 (100)	SOLID	YELLOW-LEFT WHITE-RIGHT	OUTLINE MOUNTABLE MEDIANS IN YELLOW; EDGE LINES ARE NOT USED NEXT TO BARRIER CURB
TURN LANE MARKINGS	6 (150) LINE; FULL SIZE LETTERS & SYMBOLS (8' (2.4m))	SOLID	WHITE	SEE TYPICAL TURN LANE MARKING DETAIL
TWO WAY LEFT TURN MARKING	2 @ 4 (100) EACH DIRECTION 8' (2.4m) LEFT ARROW	SKIP-DASH AND SOLID IN PAIRS	YELLOW WHITE	10' (3 m) LINE WITH 30' (9 m) SPACE FOR SKIP-DASH; 5 1/2 (140) C-C BETWEEN SOLID LINE AND SKIP-DASH LINE SEE TYPICAL TWO-WAY LEFT TURN MARKING DETAIL
CROSSWALK LINES (PEDESTRIAN) A. DIAGONALS (BIKE & EQUESTRIAN) B. LONGITUDINAL BARS (SCHOOL)	2 @ 6 (150) 12 (300) @ 45° 12 (300) @ 90°	SOLID SOLID SOLID	WHITE WHITE WHITE	NOT LESS THAN 6' (1.8 m) APART 2' (600) APART 2' (600) APART SEE TYPICAL CROSSWALK MARKING DETAILS.
STOP LINES	24 (600)	SOLID	WHITE	PLACE 4' (1.2 m) IN ADVANCE OF AND PARALLEL TO CROSSWALK, IF PRESENT. OTHERWISE, PLACE AT DESIRED STOPPING POINT, PARALLEL TO CROSSROAD CENTERLINE, WHERE POSSIBLE
PAINTED MEDIANS	2 @ 4 (100) WITH 12 (300) DIAGONALS @ 45° NO DIAGONALS USED FOR 4' (1.2 m) WIDE MEDIANS	SOLID	YELLOW; TWO WAY TRAFFIC WHITE; ONE WAY TRAFFIC	11 (280) C-C FOR THE DOUBLE LINE SEE TYPICAL PAINTED MEDIAN MARKING.
GORE MARKING AND CHANNELIZING LINES	8 (200) WITH 12 (300) DIAGONALS @ 45°	SOLID	WHITE	DIAGONALS: 15' (4.5 m) C-C (LESS THAN 30MPH (50 km/h)) 20' (6 m) C-C 30MPH (50 km/h) TO 45MPH (70 km/h) 30' (9 m) C-C (OVER 45MPH (70 km/h))
RAILROAD CROSSING	24 (600) TRANSVERSE LINES; "RR" IS 6' (1.8 m) LETTERS; 16 (400) LINE FOR "X"	SOLID	WHITE	SEE STATE STANDARD 780001 AREA OF: "R"=3.6 SQ. FT. (0.33 m ²) EACH "X"=54.0 SQ. FT. (5.0 m ²)
SHOULDER DIAGONALS	12 (300) @ 45°	SOLID	WHITE - RIGHT YELLOW - LEFT	50' (15 m) C-C (LESS THAN 30MPH (50 km/h)) 75' (25 m) C-C (30 MPH (50 km/h) TO 45MPH (70 km/h)) 150' (45 m) C-C (OVER 45MPH (70 km/h))

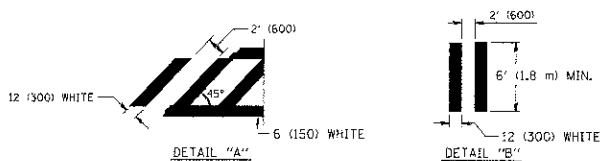
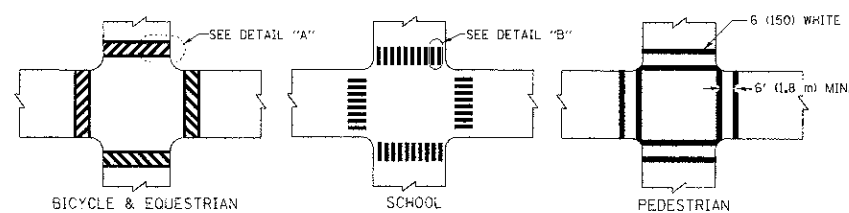
FOR FURTHER DETAILS ON PAVEMENT MARKING REFER TO STANDARD SPECIFICATIONS FOR ROAD AND BRIDGE CONSTRUCTION AND STATE STANDARD 780001.

All dimensions are in inches (millimeters) unless otherwise shown.



NOTE: MEDIANS WITH BARRIER CURB DO NOT REQUIRE AN EDGE LINE

TYPICAL LANE AND EDGE LINE MARKING



TYPICAL CROSSWALK MARKING

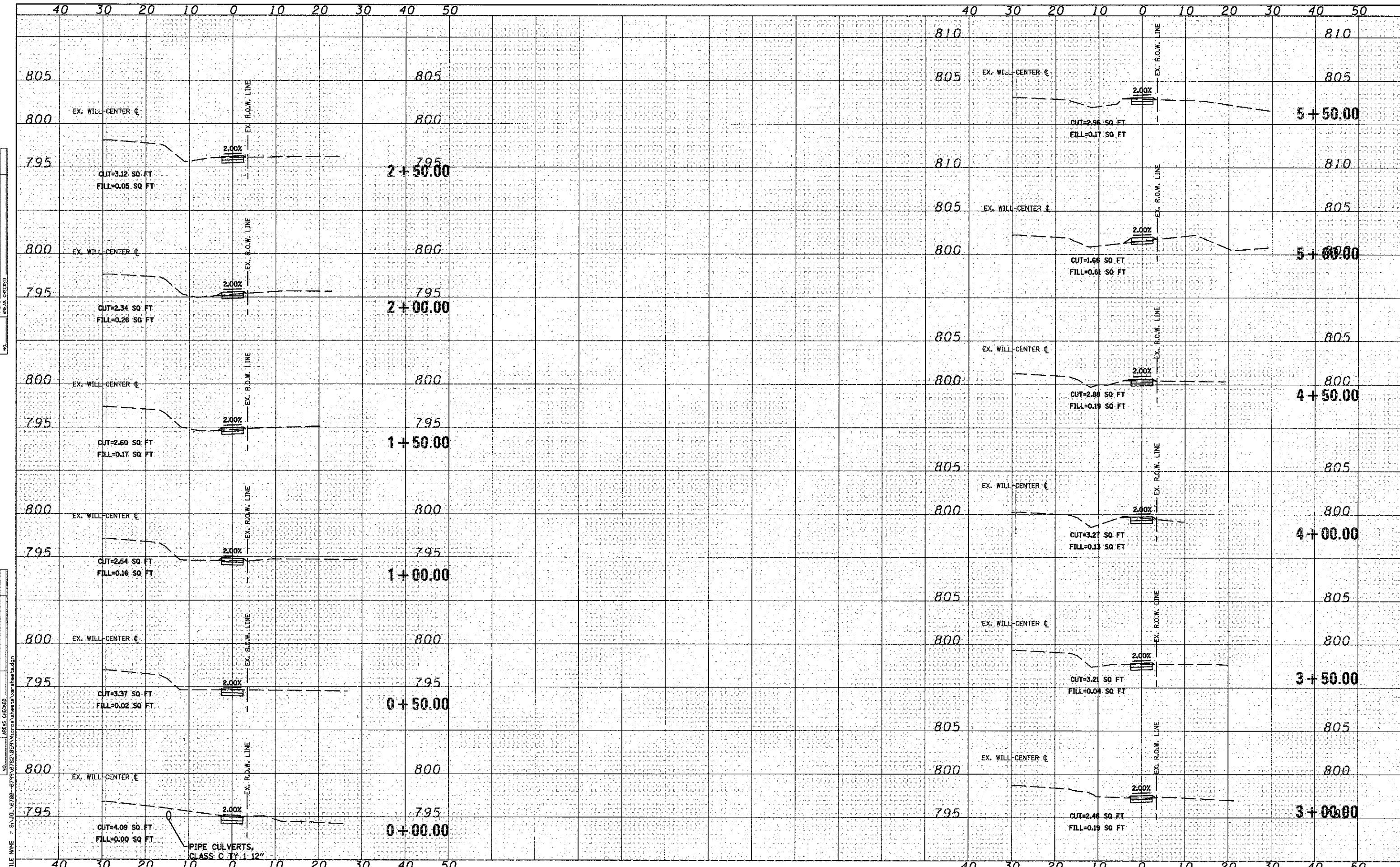
FILE NAME *	USER NAME = arivakosgn	DESIGNED = EVERS	REVISED - T. RAMMACHER 10-27-94
ar\pwwork\pwwork\arivakosgn\1021003151.dwg	3.dgn	DRAWN =	REVISED - C. JUCIUS 09-09-09
PLOT SCALE = 80.000 / 1 IN.	CHECKED =	REVISOR =	
PLOT DATE = 9/9/2009	DATE = 03-19-90	REVISED =	

STATE OF ILLINOIS
DEPARTMENT OF TRANSPORTATION

DISTRICT ONE		F.A. RTE.	SECTION	COUNTY	TOTAL SHEETS	SHEET NO.
TYPICAL PAVEMENT MARKINGS		1007	09-00021-00-SW	WILL	22	17
SCALE: NONE		TC-13		CONTRACT NO. 63772		
SHEET NO. 1 OF 1 SHEETS		STA. TO STA.		FED. ROAD DIST. NO. 1 ILLINOIS FED. AID PROJECT		

DATE	
BY	
DESIGNED	
DRAWN	
CHECKED	
DATE	
REVISIONS	
NO.	
DATE	
BY	
DESIGNED	
DRAWN	
CHECKED	
DATE	
REVISIONS	
NO.	
DATE	
BY	
DESIGNED	
DRAWN	
CHECKED	
DATE	
REVISIONS	
NO.	

DATE	
BY	
DESIGNED	
DRAWN	
CHECKED	
DATE	
REVISIONS	
NO.	
DATE	
BY	
DESIGNED	
DRAWN	
CHECKED	
DATE	
REVISIONS	
NO.	



FILE NAME = S:\JUL16720 - 67916725\095\Nicker\Nicker\Ava-plots.dgn

STRAND ASSOCIATES
 1170 SOUTH HOBOLT ROAD
 JOLIET, ILLINOIS 60431
 (815) 744-4200

USER NAME = akwestn	DESIGNED - AAN	REVISED -
PLOT SCALE = 20.0000' / IN.	DRAWN - AJJ	REVISED -
PLOT DATE = 12/26/2012	CHECKED - MAG	REVISED -
	DATE - 10/02/2012	REVISED -

**STATE OF ILLINOIS
 DEPARTMENT OF TRANSPORTATION**

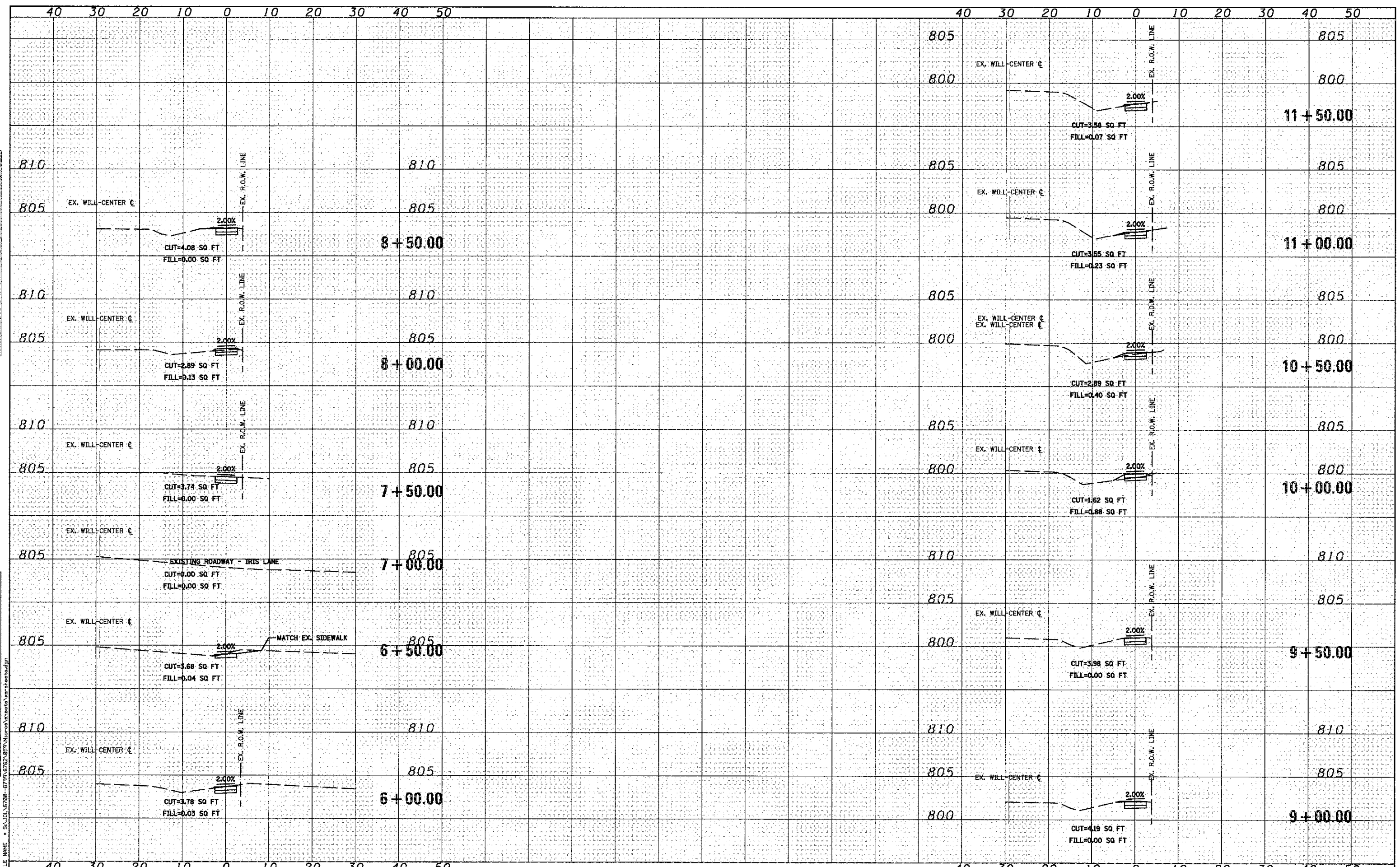
CROSS SECTIONS

SCALE: SHEET OF SHEETS STA. +00.00 TO STA. 5+50.00

MUN. RTE.	SECTION	COUNTY	TOTAL SHEETS	SHEET NO.
1007	09-00021-00-SW	WILL	22	18
CONTRACT NO. 63772				
FED. ROAD DIST. NO. 1 ILLINOIS FED. AID PROJECT				

DATE	
BY	
FINAL SURVEY	
NOTE BOOK	
NO.	
AREAS CHECKED	

DATE	
BY	
ORIGINAL SURVEY	
NOTE BOOK	
NO.	
AREAS CHECKED	



1170 SOUTH HOBOLT ROAD
JOLIET, ILLINOIS 60431
(815) 744-4200
STRAND ASSOCIATES

USER NAME = akwair
DESIGNED - AAN
DRAWN - AJJ
PLOT SCALE = 28,0000' / IN.
CHECKED - MAG
DATE - 10/02/2012

REVISED -
REVISED -
REVISED -
REVISED -

STATE OF ILLINOIS
DEPARTMENT OF TRANSPORTATION

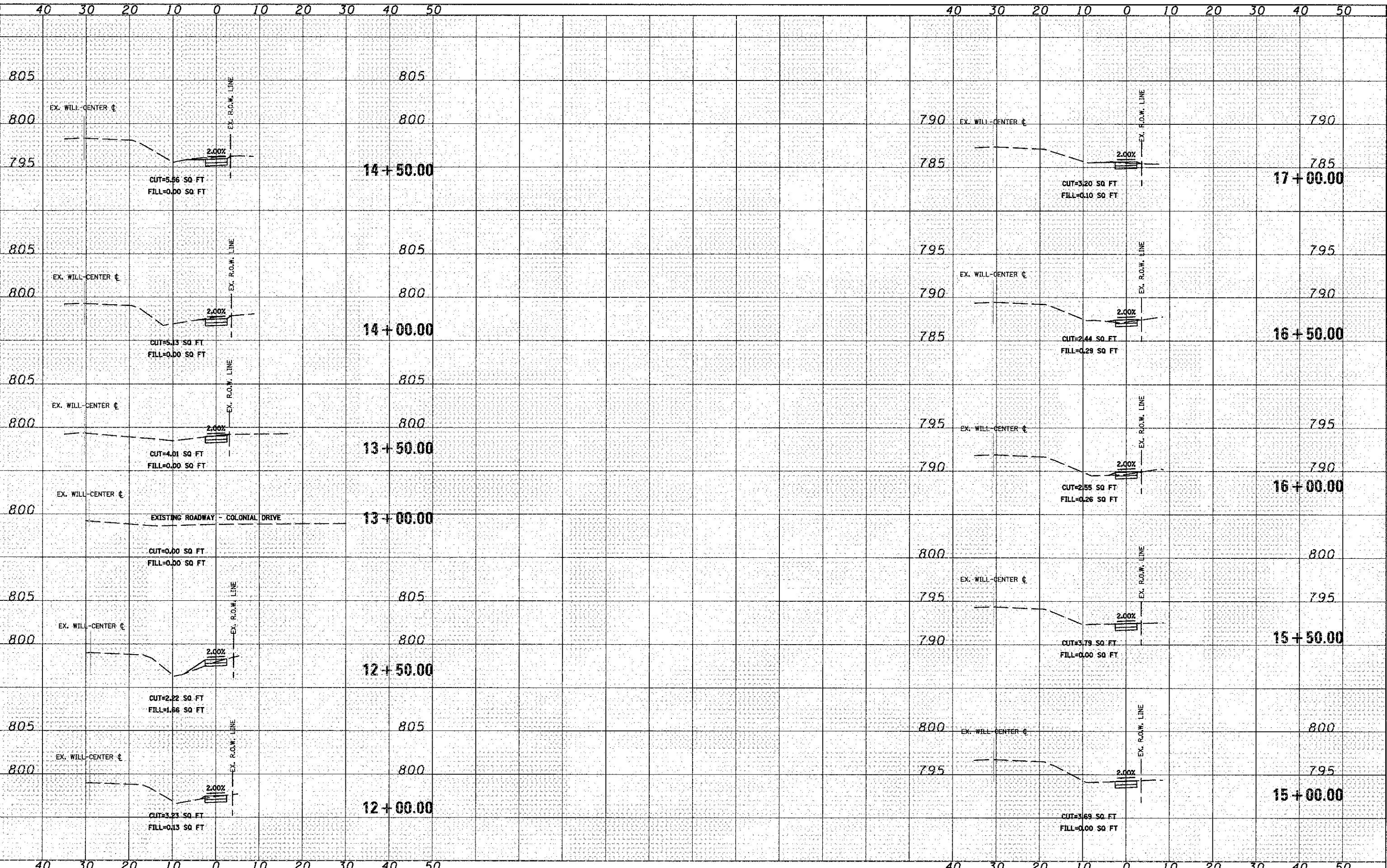
CROSS SECTIONS
SCALE: SHEET OF SHEETS STA. 6+00.00 TO STA. 11+50.00

MUN. RTE.	SECTION	COUNTY	TOTAL SHEETS	SHEET NO.
1007	09-00021-00-SW	WILL	22	19
FED. ROAD DIST. NO. 1 ILLINOIS FED. AID PROJECT			CONTRACT NO. 63772	

DATE	
BY	
DESIGNED	
DRAWN	
CHECKED	
DATE	

DATE	
BY	
DESIGNED	
DRAWN	
CHECKED	
DATE	

FILE NAME = S:\101\1700-6799\1700-00\1700-00-00-00.dwg



1170 SOUTH HARBOLT ROAD
JOLIET, ILLINOIS 60431
STRAND ASSOCIATES® (815) 744-4200

USER NAME = akwoon	DESIGNED - AAN	REVISED -
DRAWN - AJJ	CHECKED - MAG	REVISED -
PLOT SCALE = 20,000 / 1 IN.	DATE = 10/02/2012	REVISED -
PLOT DATE = 12/26/2012		

STATE OF ILLINOIS
DEPARTMENT OF TRANSPORTATION

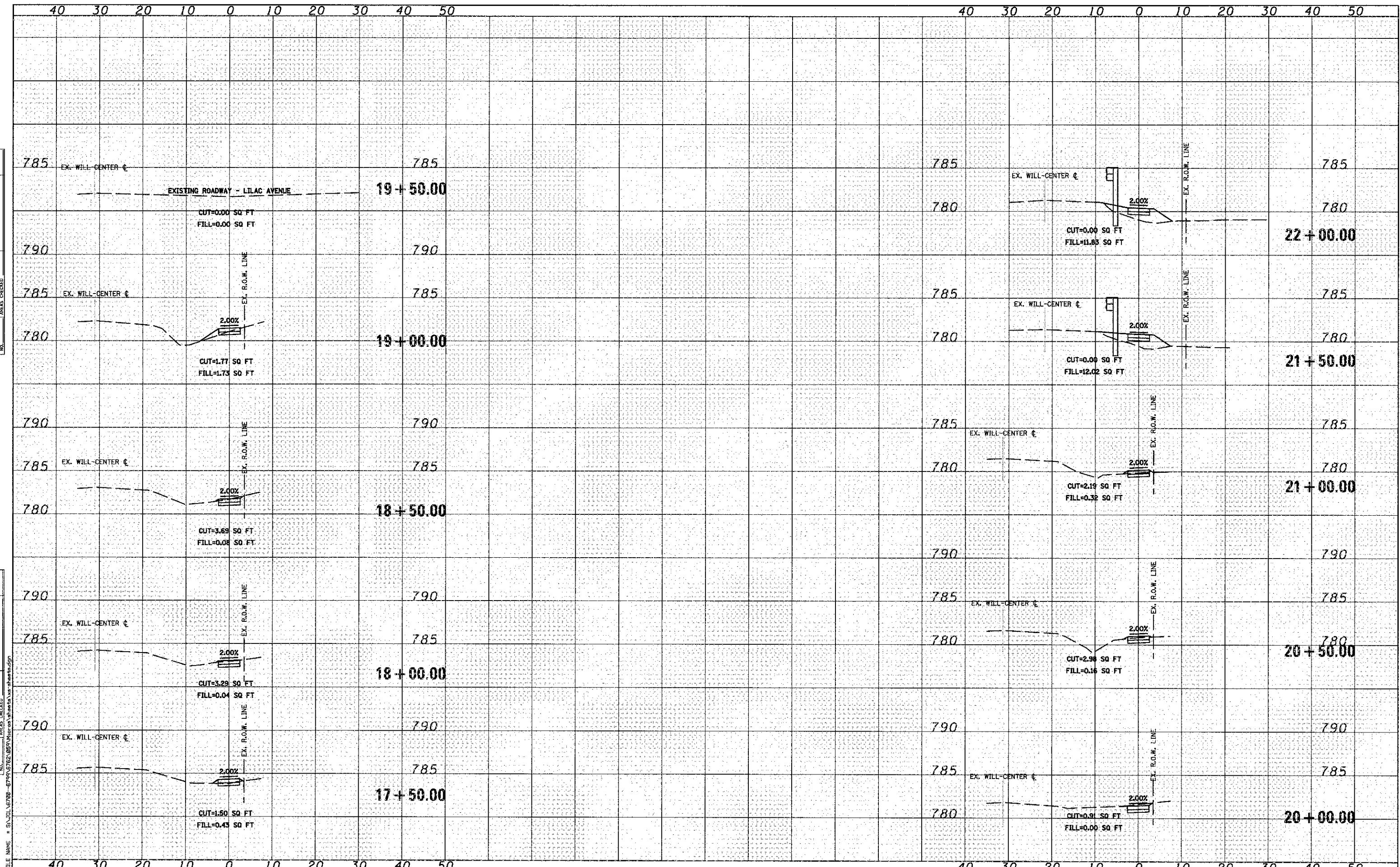
CROSS SECTIONS


SCALE: SHEET OF SHEETS STA. 12+00.00 TO STA. 17+00.00

MUN. RTE.	SECTION	COUNTY	TOTAL SHEETS	SHEET NO.
1007	09-00021-00-SW	WILL	22	20
CONTRACT NO. 63772				
FED. ROAD DIST. NO. 1 ILLINOIS FED. AID PROJECT				

DATE	
BY	
FINISHED	
SURVEYED	
PLOTTED	
TEMPLATE	
NOTE BOOK	
AREAS CHECKED	
NO.	

DATE	
BY	
ORIGINAL	
SURVEYED	
PLOTTED	
TEMPLATE	
NOTE BOOK	
AREAS CHECKED	
NO.	




 1170 SOUTH HOUBOLT ROAD
 JOLIET, ILLINOIS 60431
 (815) 744-4200

USER NAME = akwarrn	DESIGNED - AAN	REVISED -
PLOT SCALE = 28.0000' / IN.	DRAWN - AJJ	REVISED -
PLOT DATE = 12/26/2012	CHECKED - MAG	REVISED -
	DATE - 10/02/2012	REVISED -

STATE OF ILLINOIS
DEPARTMENT OF TRANSPORTATION

SCALE:		SHEET		OF	SHEETS	STA. 17+50.00	TO STA. 22+00.00
--------	--	-------	--	----	--------	---------------	------------------

MUN. RTE.	SECTION	COUNTY	TOTAL SHEETS	SHEET NO.
1007	09-00021-00-SW	WILL	22	21
CONTRACT NO. 63772				
FED. ROAD DIST. NO. 1 ILLINOIS FED. AID PROJECT				

