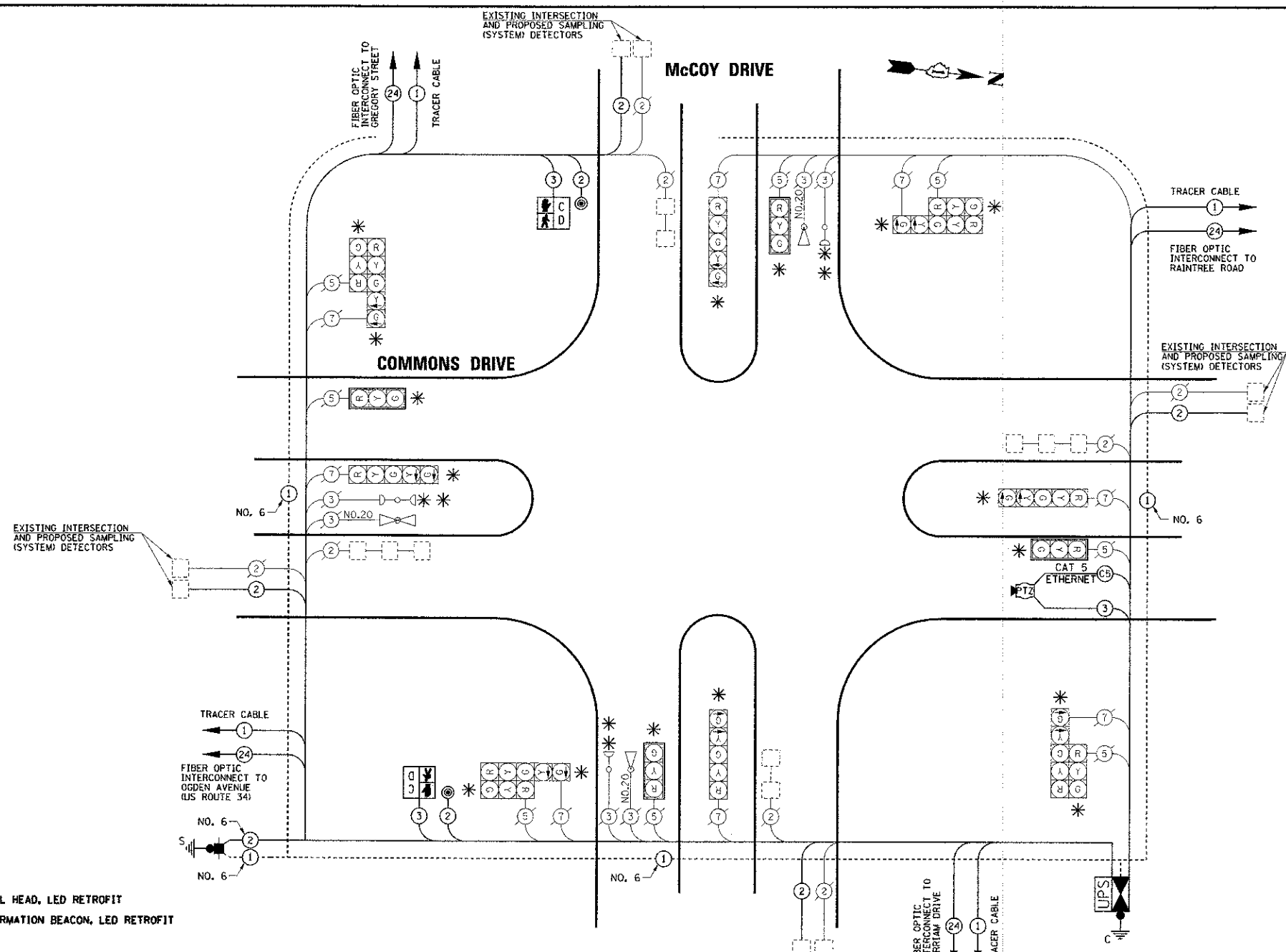


DATE	
BY	
REVISION	
NO.	
DATE	
BY	
REVISION	
NO.	
DATE	
BY	
REVISION	
NO.	

DATE	
BY	
REVISION	
NO.	
DATE	
BY	
REVISION	
NO.	
DATE	
BY	
REVISION	
NO.	

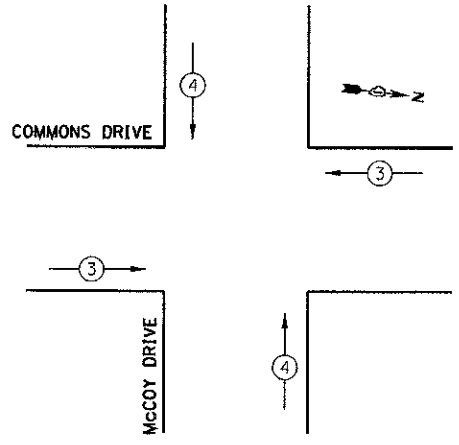


\* DENOTES SIGNAL HEAD, LED RETROFIT  
 \*\* DENOTES CONFIRMATION BEACON, LED RETROFIT

I.D.O.T TRAFFIC SIGNAL INSTALLATION ELECTRICAL SERVICE REQUIREMENTS					
TYPE	NO. LAMPS	WATTAGE		% OPERATION	TOTAL WATTAGE
		INCAND.	LED		
SIGNAL (RED)	16		17	0.50	136
(YELLOW)	16		25	0.25	100
(GREEN)	16		15	0.25	60
ARROW	16		12	0.10	19.2
PED. SIGNAL	2		25	1.00	50
CONTROLLER	1		100	1.00	100
<b>TOTAL =</b>					<b>465.2</b>

ENERGY COSTS TO: CITY OF AURORA  
 44 E. DOWNER PLACE  
 AURORA, ILLINOIS 60507-2067

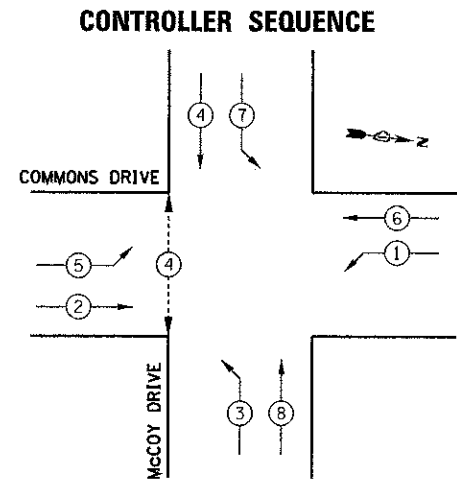
ENERGY SUPPLY CONTACT: MARK SCHERIBEL  
 PHONE: (630) 723-2128  
 COMPANY: COMMONWEALTH EDISON



**EMERGENCY VEHICLE PREEMPTION SEQUENCE**

PROPOSED EMERGENCY VEHICLE PREEMPTORS	
PROPOSED EMERGENCY VEHICLE PREEMPTORS	3 4
MOVEMENT	← → ↑ ↓

CONTROLLER SEQUENCE LEGEND	
← ● →	DUAL ENTRY PHASE
← ●	SINGLE ENTRY PHASE
← ● →	OVERLAP
●	NUMBER REFERRING TO ASSOCIATED PHASE
← ● →	PEDESTRIAN PHASE



**PHASE DESIGNATION DIAGRAM**

**SCHEDULE OF QUANTITIES**

PAY ITEM DESCRIPTION	UNIT	McCOY DRIVE
PORTLAND CEMENT CONCRETE SIDEWALK 6 INCH	SQ FT	81
DETECTABLE WARNINGS	SQ FT	9
SIDEWALK REMOVAL	SQ FT	81
ENGINEER'S FIELD OFFICE, TYPE B	CAL MO	0.3
MOBILIZATION	L SUM	0.1
TRAFFIC CONTROL AND PROTECTION, STANDARD 701601	L SUM	0.1
TRAFFIC CONTROL AND PROTECTION, STANDARD 701701	L SUM	0.1
TRAFFIC CONTROL AND PROTECTION, STANDARD 701801	L SUM	0.1
SERVICE INSTALLATION - GROUND MOUNTED	EACH	1
MAINTENANCE OF EXISTING TRAFFIC SIGNAL INSTALLATION	EACH	1
GROUNDING EXISTING HANDHOLE FRAME AND COVER	EACH	8
ELECTRIC CABLE IN CONDUIT, SIGNAL NO. 14 2C	FOOT	476
ELECTRIC CABLE IN CONDUIT, SIGNAL NO. 14 3C	FOOT	554
ELECTRIC CABLE IN CONDUIT, LEAD-IN, NO. 14 1 PAIR	FOOT	1805
ELECTRIC CABLE IN CONDUIT, SERVICE, NO. 6 2 C	FOOT	186
ELECTRIC CABLE IN CONDUIT, EQUIPMENT GROUNDING CONDUCTOR, NO. 6 1C	FOOT	606
PEDESTRIAN SIGNAL HEAD, LED, 1-FACE, BRACKET MOUNTED WITH COUNTDOWN TIMER	EACH	2
TRAFFIC SIGNAL BACKPLATE, LOUVERED, ALUMINUM	EACH	4
INDUCTIVE LOOP DETECTOR	EACH	12
LIGHT DETECTOR AMPLIFIER	EACH	1
PEDESTRIAN PUSH-BUTTON	EACH	2
MODIFY EXISTING CONTROLLER FOUNDATION	EACH	1
REMOVE ELECTRIC CABLE FROM CONDUIT	FOOT	186
REMOVE EXISTING TRAFFIC SIGNAL EQUIPMENT	EACH	1
CAT 5 ETHERNET CABLE	FOOT	64
FULL-ACTUATED CONTROLLER AND TYPE IV CABINET, SPECIAL	EACH	1
UNINTERRUPTIBLE POWER SUPPLY, SPECIAL	EACH	1
SIGNAL HEAD, LED, 1-FACE, 3-SECTION, BRACKET MOUNTED, RETROFIT	EACH	4
SIGNAL HEAD, LED, 1-FACE, 3-SECTION, MAST ARM MOUNTED, RETROFIT	EACH	4
SIGNAL HEAD, LED, 1-FACE, 5-SECTION, BRACKET MOUNTED, RETROFIT	EACH	8
INTERSECTION VIDEO TRAFFIC MONITORING SYSTEM WITH PTZ CAMERA	EACH	1
EVP CONFIRMATION BEACON, LED RETROFIT	EACH	3

THE TRAFFIC SIGNAL CONTROL EQUIPMENT FOR THIS PROJECT SHALL BE "ECONOLITE" TO MATCH THE EXISTING ADJACENT SYSTEM.

THE EMERGENCY VEHICLE PREEMPTION EQUIPMENT FOR THIS PROJECT SHALL BE OPTICOM AS REQUIRED BY THE CITY OF AURORA. LIGHT DETECTOR AMPLIFIERS SHALL BE OPTICOM MODEL 764 MULTIMODE PHASE SELECTORS.

THE END OF THE TRACER CABLE SHALL BE CONTINUOUS AND EXTEND INTO THE CONTROLLER CABINET.



USER NAME = MjFeller	DESIGNED - MJF	REVISED -
PLOT SCALE =	CHECKED - APS	REVISED -
PLOT DATE = 2/22/2013	DATE - 02/21/2013	REVISED -
FILE NAME = 690_10_sigs@20_mccoys.dgn		REVISED -

STATE OF ILLINOIS  
 DEPARTMENT OF TRANSPORTATION

**CABLE PLAN AND PHASE DESIGNATION DIAGRAM  
 COMMONS DRIVE AT McCOY DRIVE**

SCALE: SHEET NO. OF SHEETS STA. TO STA.

F.A.U. RTE. 153/2532	SECTION 11-00297-00-TL	COUNTY DUPAGE	TOTAL SHEETS 38	SHEET NO. 13
CONTRACT NO. 63816			ILLINOIS FED. AID PROJECT	