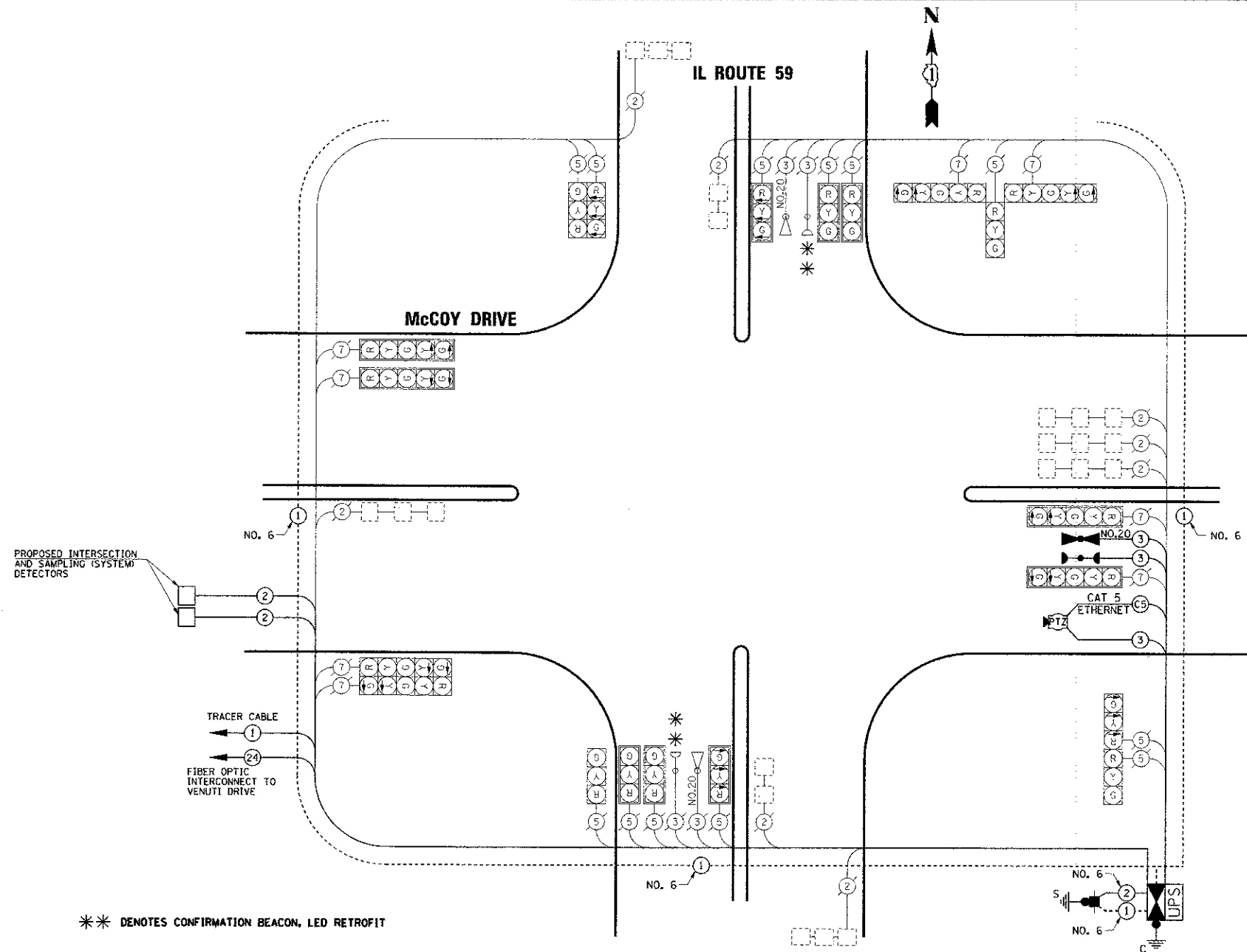


DATE	
BY	
REVISIONS	
NO.	
DATE	
BY	
REVISIONS	
NO.	
DATE	
BY	
REVISIONS	
NO.	

DATE	
BY	
REVISIONS	
NO.	
DATE	
BY	
REVISIONS	
NO.	
DATE	
BY	
REVISIONS	
NO.	

### SCHEDULE OF QUANTITIES

PAY ITEM DESCRIPTION	UNIT	IL ROUTE 59
ENGINEER'S FIELD OFFICE, TYPE B	CAL MO	0.3
MOBILIZATION	L.SUM	0.1
TRAFFIC CONTROL AND PROTECTION, STANDARD 701601	L.SUM	0.1
TRAFFIC CONTROL AND PROTECTION, STANDARD 701701	L.SUM	0.1
TRAFFIC CONTROL AND PROTECTION, STANDARD 701801	L.SUM	0.1
SERVICE INSTALLATION - GROUND MOUNTED	EACH	1
UNDERGROUND CONDUIT, GALVANIZED STEEL, 2" DIA.	FOOT	272
HANDHOLE	EACH	1
MAINTENANCE OF EXISTING TRAFFIC SIGNAL INSTALLATION	EACH	1
GROUNDING EXISTING HANDHOLE FRAME AND COVER	EACH	7
ELECTRIC CABLE IN CONDUIT, SIGNAL, NO. 14 3C	FOOT	164
ELECTRIC CABLE IN CONDUIT, LEAD-IN, NO. 14 1 PAIR	FOOT	896
ELECTRIC CABLE IN CONDUIT, SERVICE, NO. 6 2 C	FOOT	29
ELECTRIC CABLE IN CONDUIT, EQUIPMENT GROUNDING CONDUCTOR, NO. 6 1C	FOOT	588
DRILL EXISTING HANDHOLE	EACH	1
INDUCTIVE LOOP DETECTOR	EACH	10
DETECTOR LOOP, TYPE 1	FOOT	66
LIGHT DETECTOR	EACH	1
LIGHT DETECTOR AMPLIFIER	EACH	1
MODIFY EXISTING CONTROLLER FOUNDATION	EACH	1
REMOVE ELECTRIC CABLE FROM CONDUIT	FOOT	20
REMOVE EXISTING TRAFFIC SIGNAL EQUIPMENT	EACH	1
CAT 5 ETHERNET CABLE	FOOT	61
FULL-ACTUATED CONTROLLER AND TYPE IV CABINET, SPECIAL	EACH	1
UNINTERRUPTABLE POWER SUPPLY, SPECIAL	EACH	1
ELECTRIC CABLE IN CONDUIT NO. 20 3/C, TWISTED, SHIELDED	FOOT	104
EVP CONFIRMATION BEACON, LED RETROFIT	EACH	2

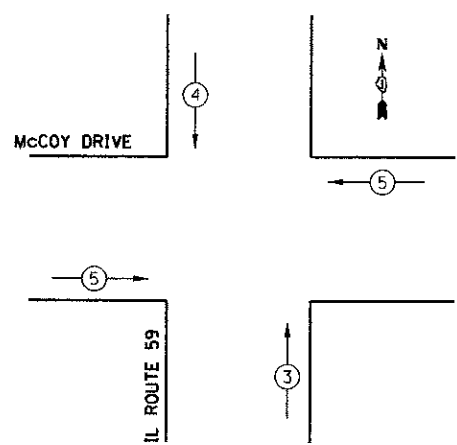


\*\* DENOTES CONFIRMATION BEACON, LED RETROFIT

I.D.O.T TRAFFIC SIGNAL INSTALLATION ELECTRICAL SERVICE REQUIREMENTS					
TYPE	NO. LAMPS	WATTAGE		% OPERATION	TOTAL WATTAGE
		INCAND.	LED		
SIGNAL (RED)	16		17	0.50	136
(YELLOW)	16		25	0.25	100
(GREEN)	16		15	0.25	60
ARROW	28		12	0.10	33.6
CONTROLLER	1		100	1.00	100
<b>TOTAL =</b>					<b>429.6</b>

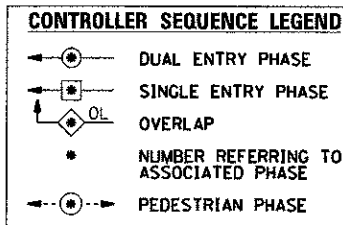
ENERGY COSTS TO: CITY OF AURORA  
44 E. DOWNER PLACE  
AURORA, ILLINOIS 60507-2067

ENERGY SUPPLY CONTACT: MARK SCHERIBEL  
PHONE: (630) 723-2128  
COMPANY: COMMONWEALTH EDISON

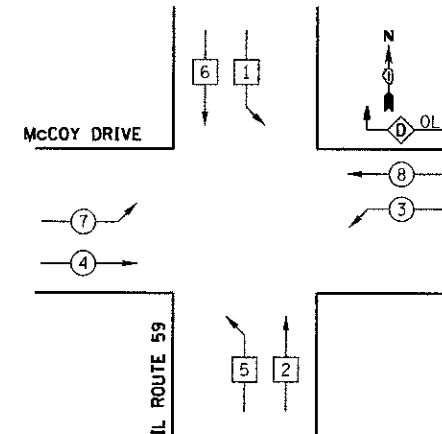


EMERGENCY VEHICLE PREEMPTION SEQUENCE

PROPOSED EMERGENCY VEHICLE PREEMPTORS			
PROPOSED EMERGENCY VEHICLE PREEMPTORS	3	4	5
MOVEMENT	↑	↓	→



### CONTROLLER SEQUENCE



PHASE DESIGNATION DIAGRAM

OVERLAP PHASE	PERMISSIVE PHASE	PROTECTED PHASE
D	= 8	+ 1

THE TRAFFIC SIGNAL CONTROL EQUIPMENT FOR THIS PROJECT SHALL BE "ECONOLITE" TO MATCH THE EXISTING ADJACENT SYSTEM.

THE EMERGENCY VEHICLE PREEMPTION EQUIPMENT FOR THIS PROJECT SHALL BE OPTICOM AS REQUIRED BY THE CITY OF AURORA, LIGHT DETECTOR AMPLIFIERS SHALL BE OPTICOM MODEL 764 MULTIMODE PHASE SELECTORS.

THE END OF THE TRACER CABLE SHALL BE CONTINUOUS AND EXTEND INTO THE CONTROLLER CABINET.