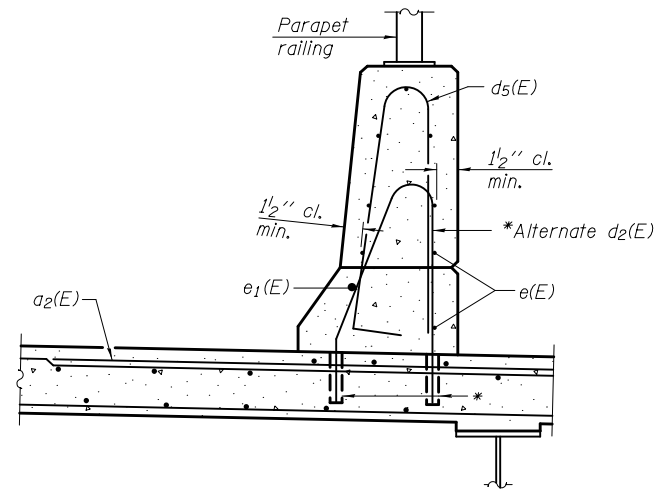


MIN. BAR LAP

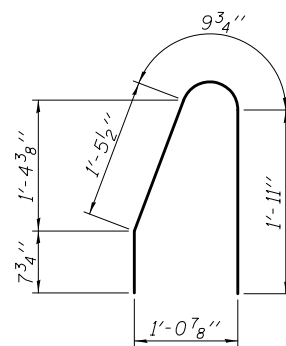
#6 bar = 3'-4"



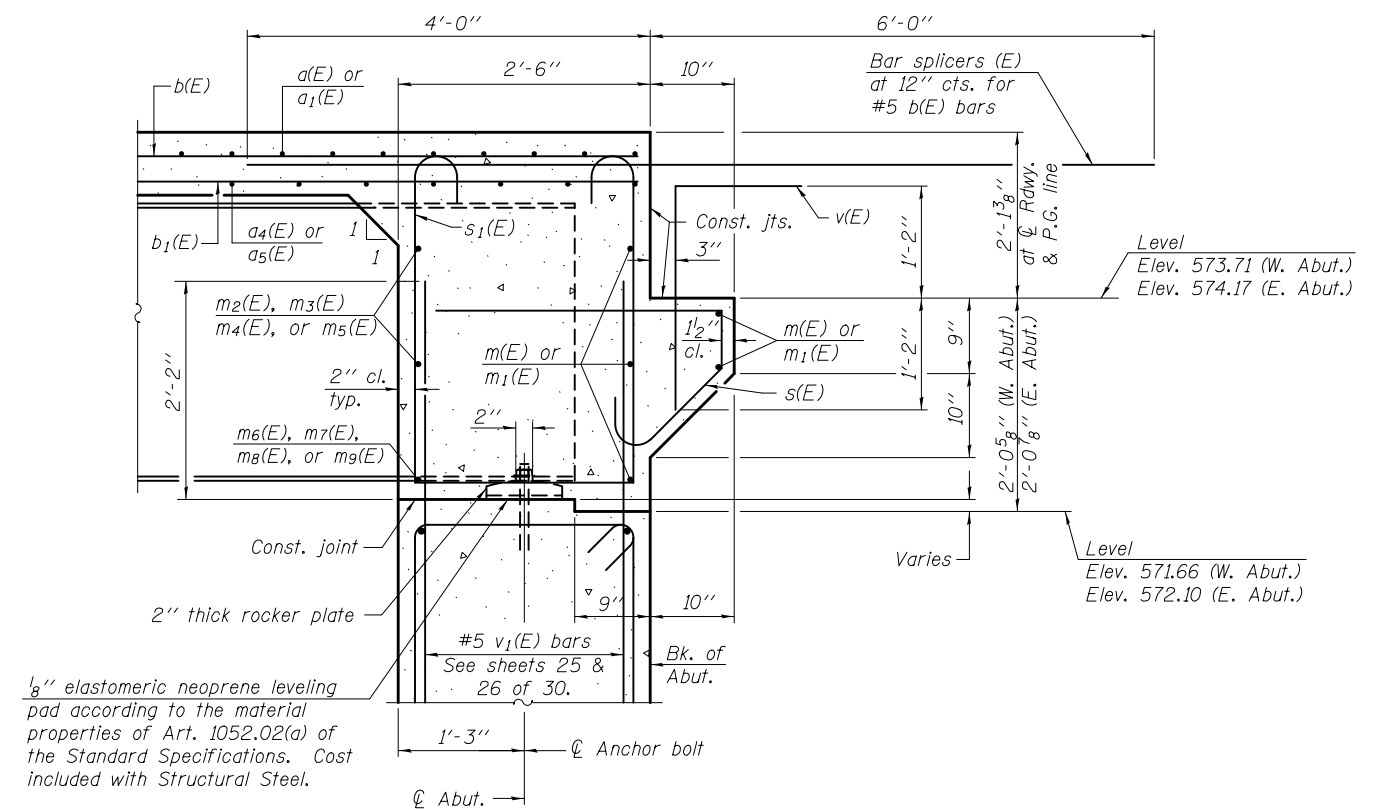
****ALTERNATE OPTION OF SOUTH PARAPET**

* Drill and set alternate #5 d₂(E) bars according to Article 509.06 of the Standard Specifications. Drilled holes shall be roughened or scored per manufacturer's recommendations. Maximum depth of hole shall not exceed 6". The Contractor shall take all necessary precautions to prevent drilled hole interference with deck reinforcement. Longitudinal bars shall be located to clear drilled holes. Drilled holes shall be located to miss transverse reinforcement bars.

** Alternate option for the south parapet is permitted. If the Contractor utilizes the alternate option, it shall be at no additional cost to the Department.



ALTERNATE BAR d₂(E)



SECTION A-A

Notes:
 Reinforcement bars in diaphragm are billed with superstructure on sheet 12 of 30.
 Concrete in diaphragm is included with Concrete Superstructure on sheet 12 of 30.
 For details of bars s(E) & s₁(E) see sheet 12 of 30.
 For bar splicer (E) details see sheet 28 of 30.

DESIGNED - STEPHEN M. RYAN	EXAMINED - <i>Joanne F. [Signature]</i>	DATE - MARCH 12, 2013	STATE OF ILLINOIS DEPARTMENT OF TRANSPORTATION	DIAPHRAGM DETAILS STRUCTURE NO. 081-0163	F.A.U. RTE.	SECTION	COUNTY	TOTAL SHEETS	SHEET NO.	
CHECKED - RAY AHANCHI	PASSED - <i>Carl [Signature]</i>	REVISED			5789	40 BR	ROCK ISLAND	225	135	
DRAWN - h.t. duong	ACTING ENGINEER OF BRIDGES AND STRUCTURES	REVISED			CONTRACT NO. 64341					
CHECKED - S.M.R. / N.R.B. / G.R.A.	ACTING ENGINEER OF BRIDGES AND STRUCTURES	REVISED			SHEET NO. 14 OF 30 SHEETS					