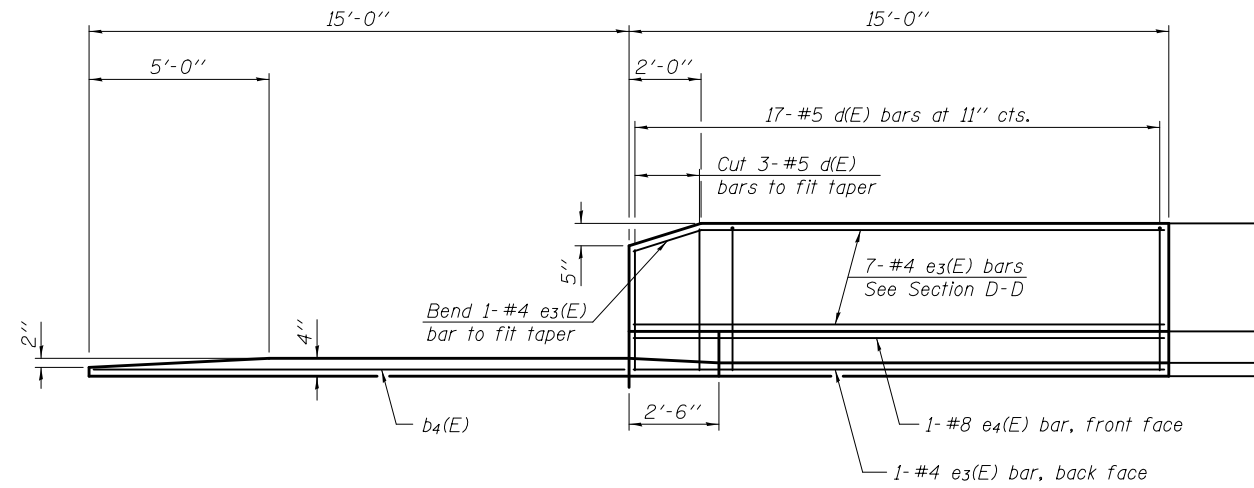
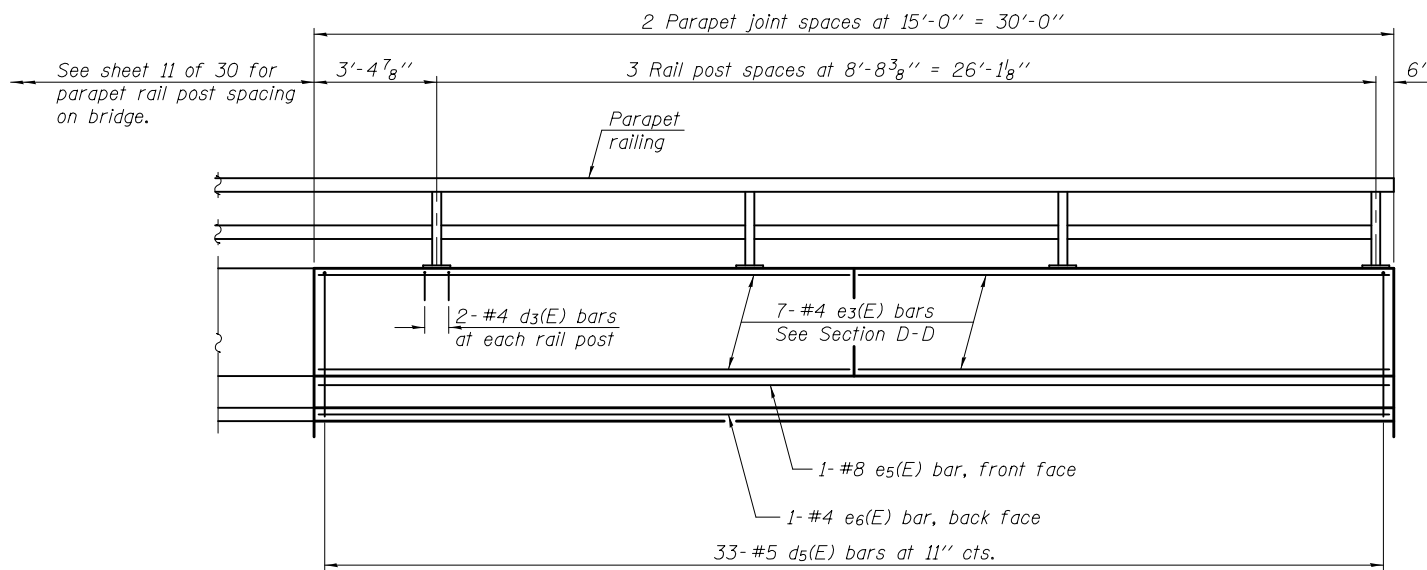
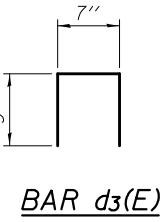
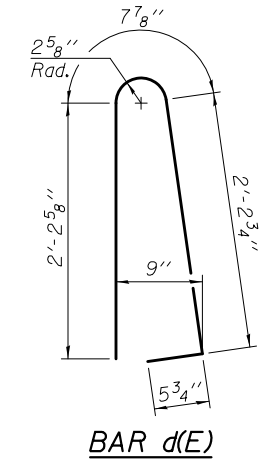
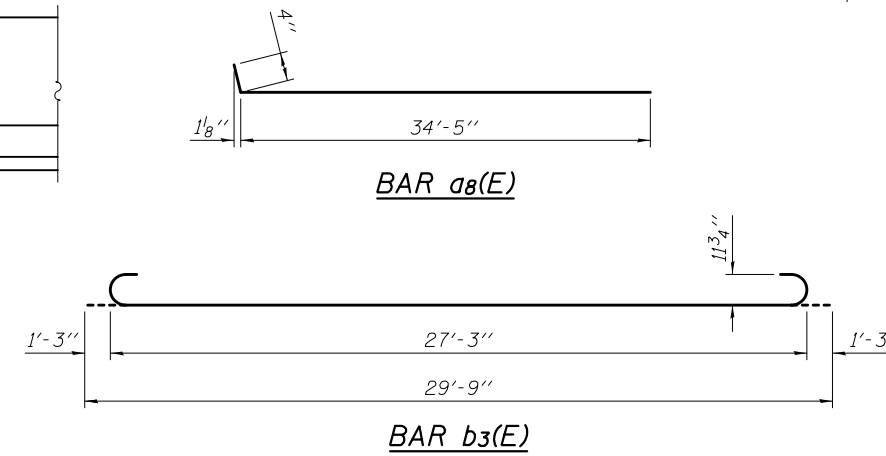


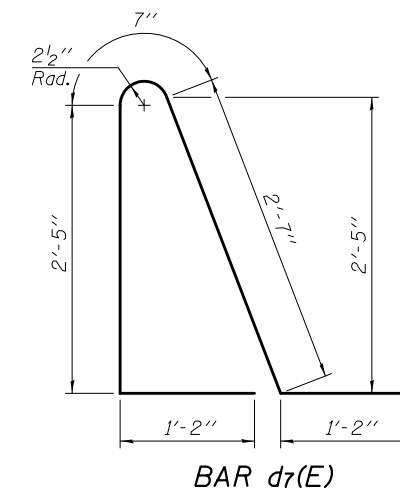
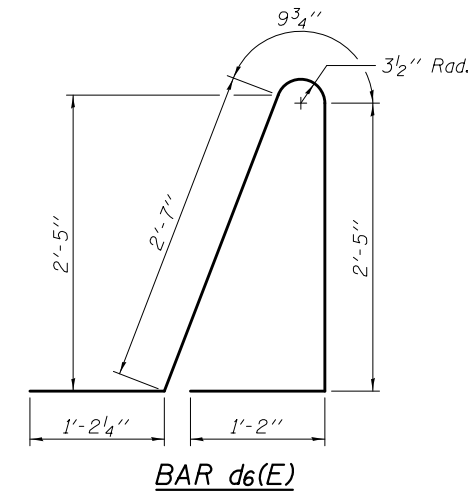
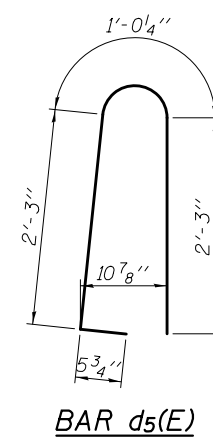
Notes:  
 Approach slab and parapet concrete shall be paid for as Concrete Superstructure.  
 Approach footing concrete shall be paid for as Concrete Structures.  
 Reinforcement shall be paid for as Reinforcement Bars, Epoxy Coated.  
 For v(E) bar details, see sheets 12 and 14 of 30.  
 The approach footing maximum applied service bearing pressure (Qmax) = 2.0 ksf.  
 For bar splicer details, see sheet 28 of 30.  
 Cost of excavation for approach footing included with Concrete Structures.  
 For Granular Backfill for Structures and drainage treatment details, see sheet 2 of 30.  
 See sheet 11 of 30 for parapet joint details.



**INSIDE ELEVATION OF NORTH PARAPET**  
 (Looking North)

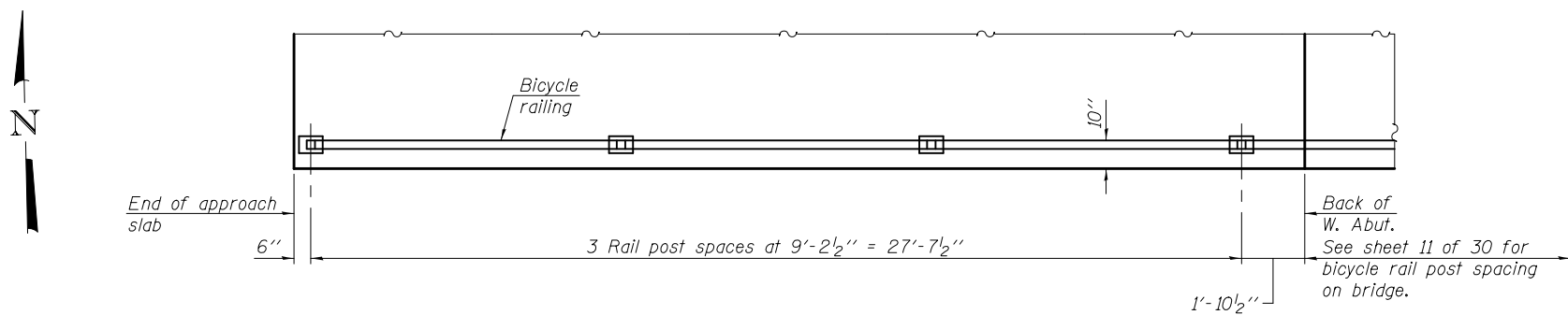


**INSIDE ELEVATION OF SOUTH PARAPET**  
 (Looking South)



**WEST APPROACH SLAB  
 BILL OF MATERIAL**

Bar	No.	Size	Length	Shape
a3(E)	37	#6	6'-6"	—
a7(E)	25	#4	40'-1"	—
a8(E)	25	#4	34'-9"	—
a9(E)	46	#5	40'-1"	—
a10(E)	46	#5	34'-7"	—
b2(E)	62	#4	29'-8"	—
b3(E)	181	#9	29'-9"	—
b4(E)	2	#4	14'-8"	—
d(E)	17	#5	5'-7"	U
d3(E)	8	#4	2'-1"	U
d5(E)	33	#5	6'-0"	U
d6(E)	33	#5	8'-2"	U
d7(E)	17	#5	7'-11"	U
e3(E)	22	#4	14'-8"	—
e4(E)	1	#8	14'-8"	—
e5(E)	1	#8	29'-8"	—
e6(E)	1	#4	29'-8"	—
f(E)	154	#4	9'-8"	—
w(E)	40	#5	40'-1"	—
w1(E)	40	#5	34'-7"	—
Concrete Superstructure		Cu. Yd.	121.0	
Concrete Structures		Cu. Yd.	23.3	
Reinforcement Bars, Epoxy Coated		Pound	29,950	



**PARTIAL BICYCLE RAIL POST PLAN**  
 (at South edge of approach slab)

DESIGNED - STEPHEN M. RYAN	EXAMINED - <i>James F. J. [Signature]</i>	DATE - MARCH 12, 2013
CHECKED - RAY AHANCHI	PASSED - <i>Carl [Signature]</i>	REVISED
DRAWN - MICHAEL B. MOSSMAN	ACTING ENGINEER OF BRIDGES AND STRUCTURES	REVISED
CHECKED - S.M.R. / N.R.B. / G.R.A.		

STATE OF ILLINOIS  
 DEPARTMENT OF TRANSPORTATION

WEST BRIDGE APPROACH SLAB DETAILS  
 STRUCTURE NO. 081-0163

SHEET NO. 17 OF 30 SHEETS

F.A.U. RTE.	SECTION	COUNTY	TOTAL SHEETS	SHEET NO.
5789	40 BR	ROCK ISLAND	225	138
CONTRACT NO. 64341			ILLINOIS FED. AID PROJECT	