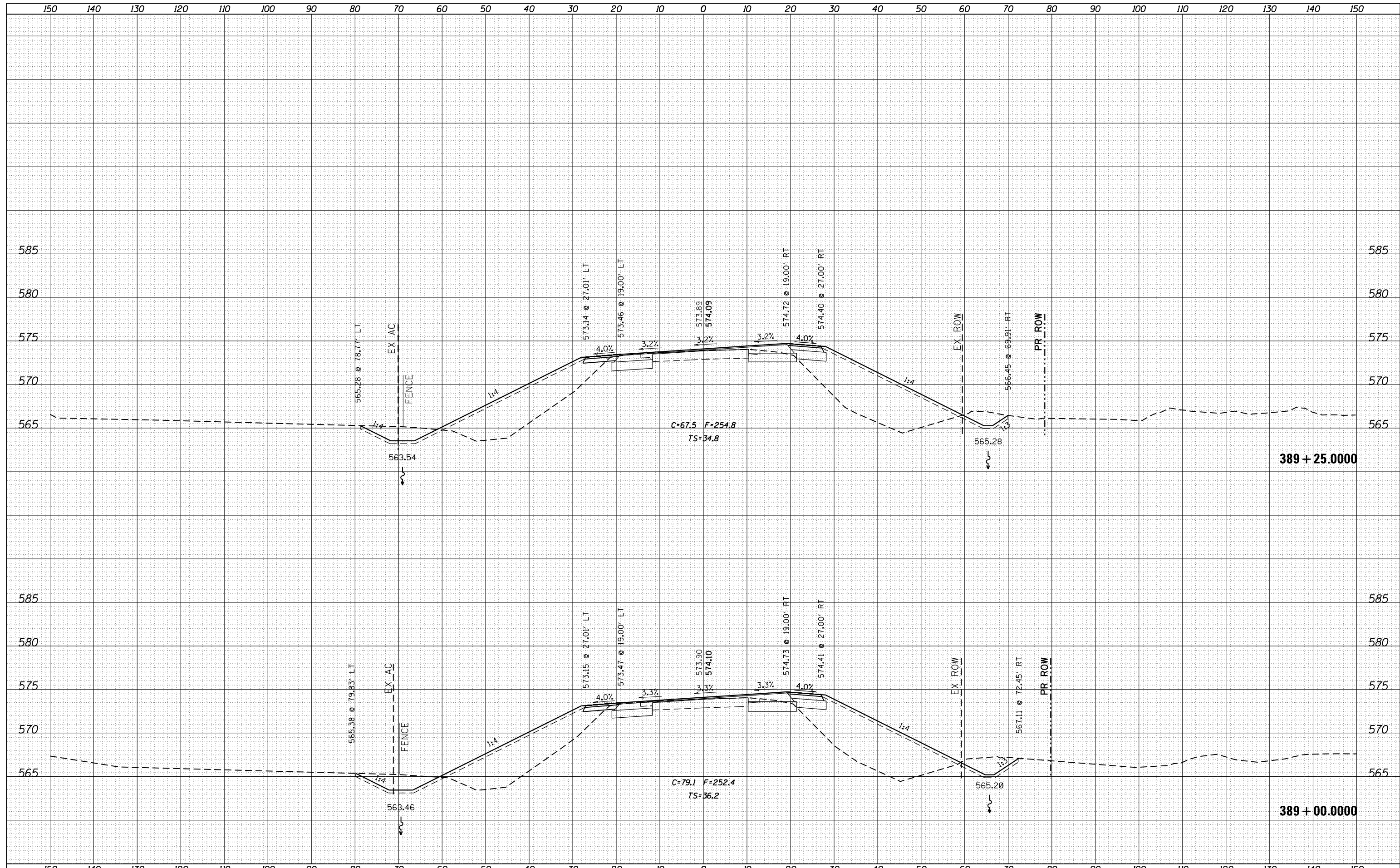


DATE	
BY	
FINAL SURVEY	SURVEYED
NOTE BOOK	PLOTTED
NO.	TEMPLATE
	AREAS
	CHECKED

DATE	
BY	
ORIGINAL SURVEY	SURVEYED
NOTE BOOK	PLOTTED
NO.	TEMPLATE
	AREAS
	CHECKED



FILE NAME =	USER NAME = renkesw	DESIGNED -	REVISED -	STATE OF ILLINOIS DEPARTMENT OF TRANSPORTATION	U.S. 6 CROSS SECTIONS	F.A.U. RTE.	SECTION	COUNTY	TOTAL SHEETS	SHEET NO.	
Default	es:\pw\work\pwidth\renkesw\dms36693\0205584-xpc.mxd	DRAWN -	REVISED -			5789	40BR	ROCK ISLAND	225	198	
	PLOT SCALE = 20.0000' / in.	CHECKED -	REVISED -			CONTRACT NO. 64341					
	PLOT DATE = Thu Dec 20 09:50:03 2012	DATE -	REVISED -			SCALE:	SHEET	OF	SHEETS	STA. 389+00.0000 TO STA. 389+25.0000	ILLINOIS FED. AID PROJECT