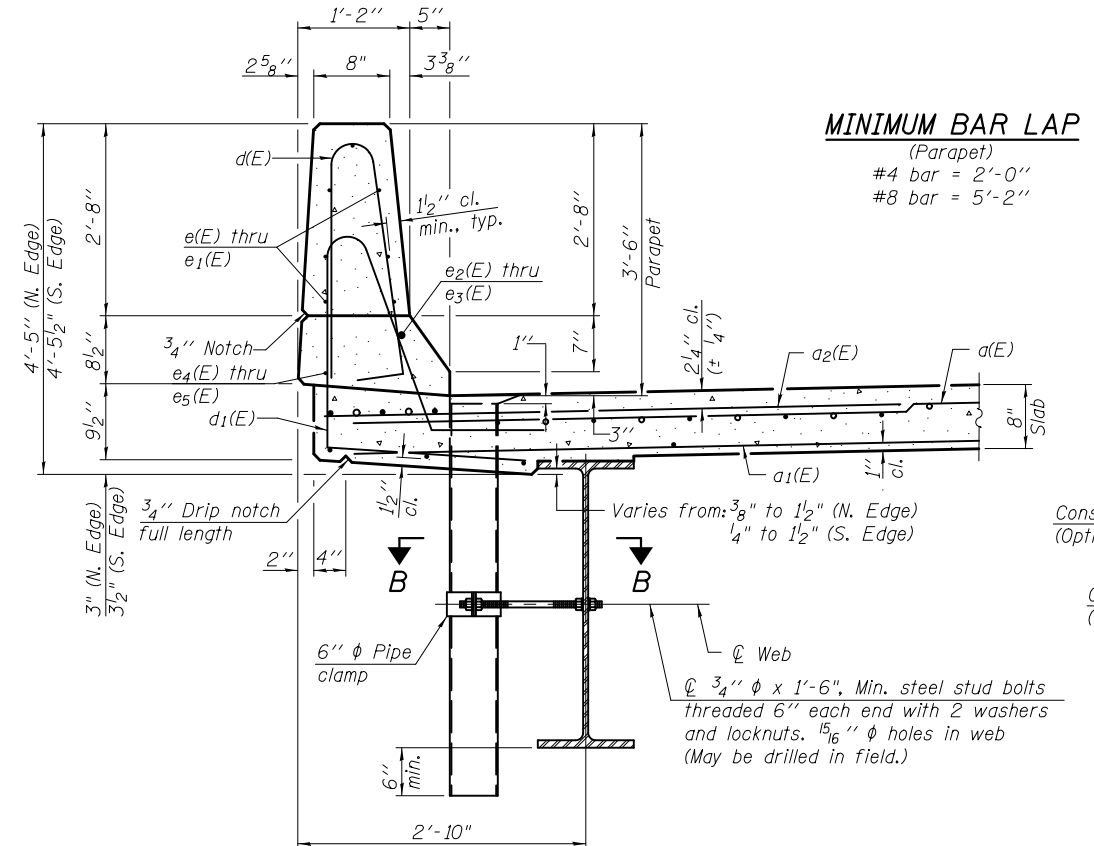
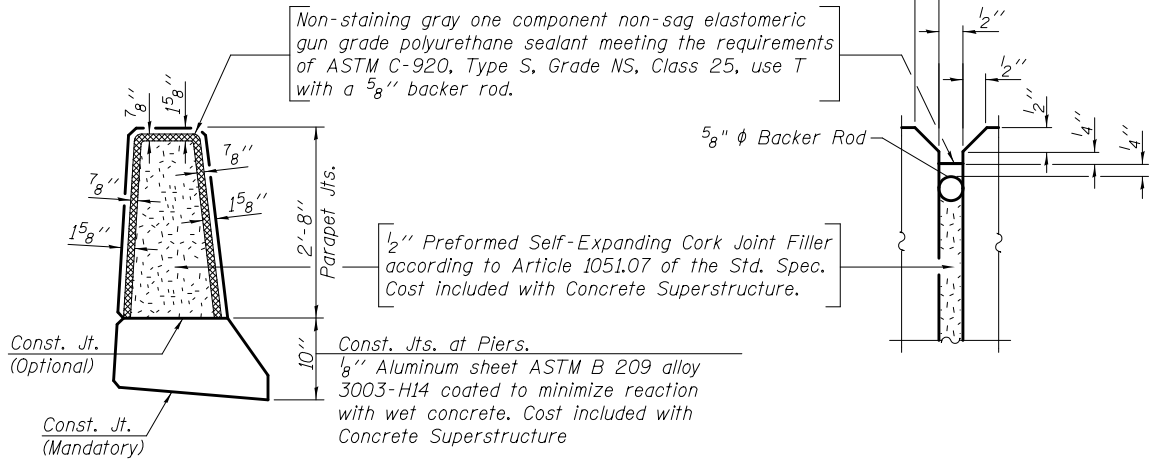


INSIDE ELEVATION OF PARAPET



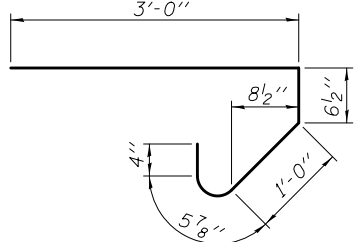
SECTION THRU PARAPET

MINIMUM BAR LAP
(Parapet)
#4 bar = 2'-0"
#8 bar = 5'-2"

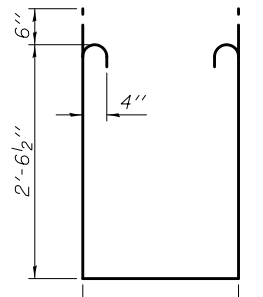


PARAPET JOINT DETAILS

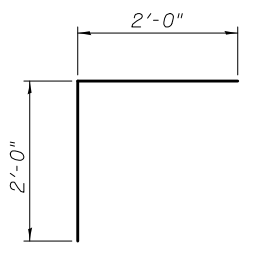
Notes:
The exterior surfaces of the floor drains shall be painted with the finish coat as specified in the special provisions for Cleaning and Painting New Metal Structures. The exterior surfaces of the drains shall be cleaned according to Society of Protective Coatings Spec. SSPC-SP1 prior to painting.
Fiberglass pipe shall conform to ASTM D 2996, with short-time rupture strength hoop tensile stress of 30,000 p.s.i. minimum.
Galvanize clamping device according to AASHTO M232. Cost of clamping device and inserts is included with Floor Drains.
Drains shall be located clear of all diaphragms.



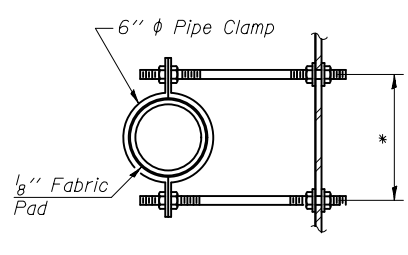
BAR s(E)



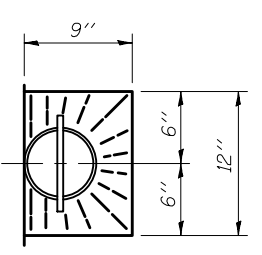
BAR s1(E)



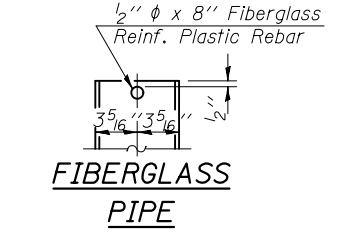
BAR v(E)



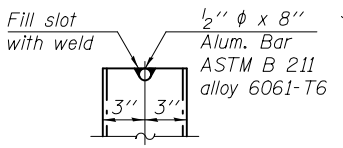
SECTION B-B
*Dimension as required by Pipe Clamp



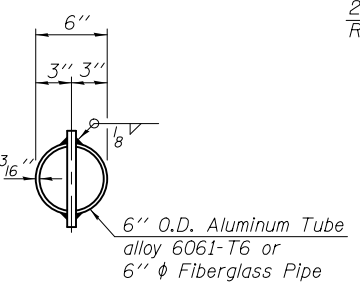
TOP PLAN



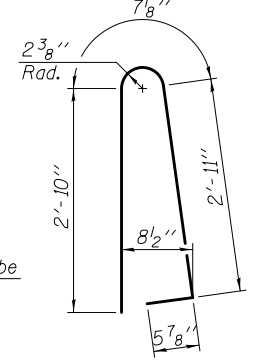
FIBERGLASS PIPE



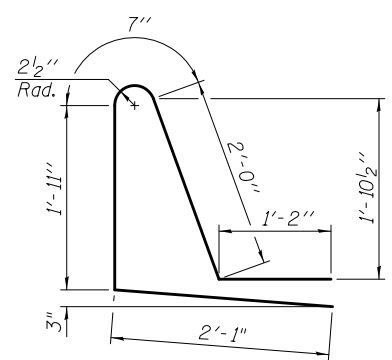
ALUMINUM TUBE



TOP PLAN (Showing Aluminum Tube)



BAR d(E)



BAR d1(E)

SUPERSTRUCTURE BILL OF MATERIAL (E.B. & W.B. STRUCTURES)

Bar	No.	Size	Length	Shape
d(E)	1128	#5	22'-7"	—
a1(E)	628	#5	21'-9"	—
a2(E)	1128	#6	6'-6"	—
b(E)	400	#5	31'-8"	—
b1(E)	184	#6	28'-0"	—
b2(E)	420	#5	26'-0"	—
d(E)	516	#5	6'-10"	—
d1(E)	516	#5	7'-9"	—
e(E)	112	#4	18'-3"	—
e1(E)	84	#4	14'-1"	—
e2(E)	8	#8	36'-9"	—
e3(E)	8	#8	24'-9"	—
e4(E)	16	#4	19'-8"	—
e5(E)	8	#4	22'-8"	—
m(E)	40	#6	22'-7"	—
m1(E)	48	#6	11'-10"	—
m2(E)	16	#6	7'-8"	—
m3(E)	8	#6	2'-6"	—
m4(E)	8	#6	3'-8"	—
s(E)	192	#5	6'-10"	—
s1(E)	176	#4	8'-4"	—
v(E)	184	#5	4'-0"	—
Floor Drains	Each		12	
Concrete Superstructure	Cu. Yds.		384.8	
Bridge Deck Grooving	Sq. Yd.		1,054	
Protective Coat	Sq. Yd.		1,328	
Reinforcement Bars, Epoxy Coated	Pound		101,410	

Bars indicated thus 1x2-#5 etc. indicates 1 line of bars with 2 lengths per line.

0810194_64D23_017_Super-De...01.dgn 2:42:01 PM 3/19/2013



DESIGNED - MWS	REVISD -
CHECKED - BJM	REVISD -
DRAWN - MWS	REVISD -
CHECKED - BJM	REVISD -

STATE OF ILLINOIS DEPARTMENT OF TRANSPORTATION

SUPERSTRUCTURE DETAILS
STRUCTURE NO. 081-0194 (E.B.) AND NO. 081-0195 (W.B.)

F.A.I. RT. 74/280	SECTION 81-3BR	COUNTY ROCK ISLAND	TOTAL SHEETS 290	SHEET NO. 180
CONTRACT NO. 64D23				

SHEET NO. 17 OF 38 SHEETS

ILLINOIS FED. AID PROJECT